

Product datasheet for **RC212446**

ADAMTS8 (NM_007037) Human Tagged ORF Clone

Product data:

Product Type:	Expression Plasmids
Product Name:	ADAMTS8 (NM_007037) Human Tagged ORF Clone
Tag:	Myc-DDK
Symbol:	ADAMTS8
Synonyms:	ADAM-TS8; METH2
Mammalian Cell Selection:	Neomycin
Vector:	pCMV6-Entry (PS100001)
E. coli Selection:	Kanamycin (25 ug/mL)



[View online »](#)

ORF Nucleotide Sequence:

>RC212446 representing NM_007037
 Red=Cloning site Blue=ORF Green=Tags(s)

TTTTGTAATACGACTCACTATAGGGCGGCCGGGAATTCGTCGACTGGATCCGGTACCGAGGAGATCTGCC
 GCC**CGCATCGCC**

ATGCTCCCCGCCCCCGCCGCCCGCGTGGCCTCCGCTCCTGCTGCTGCTGCTGCTGCTGCCGCTGGCCC
 GCGGCGCCCCGGCCCGGCCCGCAGCCGGGGGCGAGGCCTCGGAGCTGGTGGTGCCACGCGGTTGCCCGG
 CAGCGCGGGCGAGCTCGCGCTCCACCTGTCCGCTTCGGCAAGGGCTTCGTGCTGCGCCTGGCGCCCGAC
 GACAGTTCCTGGCGCCGACTTCAAGATCGAGCGCCTCGGGGGCTCCGGCCGGGCGACCGGGGGCGAGC
 GGGGGTGC GCGGCTGCTTCTTCCGGCACCGTGAATGGGGAGCCGAGTCGCTGGCGGCGGTACGCT
 GTGCCGCGGGTGAAGCGCTCCTTCTGCTGGACGGCGAGGAGTTCACCATCCAGCCGACGGGCGCGGGG
 GGCTCCCTGGCTCAGCCGACCGCTGCAGCGTGGGGTCCCGCCGAGCCCGCCCTCCCGGAGGAC
 CCGAGTGGGAGGTGGAGACGGGAGAGGGTCAGAGGCAGGAGAGAGACCACAGGAGGACAGCGAGGA
 GGAGAGCCAAGAAGAGGAGGCAGAAGGGCTAGCGAGCCGCCACCGCCCTGGGGGCCACGAGTAGGACC
 AAGCGGTTTGTGTCTGAGGCGCGCTTCGTGGAGACGCTGCTGGTGGCCGATGCGTCCATGGCTGCCTTCT
 ACGGGGCCGACCTGCAGAACCACATCCTGACGTTAATGTCTGTGGCAGCCGAATCTACAAGCACCCAG
 CATCAAGAATTCATCAACCTGATGGTGGTAAAAGTGTGATCGTAGAAGATGAAAAATGGGGCCAGAG
 GTGTCCGACAATGGGGGGCTTACTGCGTAACCTCTGCAACTGGCAGCGCGTTCACCCAGCCAGCG
 ACCGCCACCCAGAGCACTACGACACGGCCATCCTGCTCACCAGACAGAATTCGTGGGCGAGGAGGGGT
 GTGTGACACCTGGGTGTGGCAGACATCGGGACCATTTGTGACCCCAACAAAAGTGTCCGTGATCGAG
 GATGAGGGGCTCCAGGCGGCCACACCTGGCCATGAACTAGGGCACGTCTCAGCATGCCCCAGGACG
 ACTGAAGCCCTGCACACGGCTCTTCGGGCCCATGGGAAGCACACGATGATGGCACCCGCTGTTTCGTCCA
 CCTGAACCAGACGCTGCCCTGGTCCCTGTCAGCGCCATGTATCTCACAGAGCTTCTGGACGGCGGGCAC
 GGAGACTGCTCCTGGATGCCCTGCTGCGGCCCTGCCCTCCCCACAGGCTCCCGGGCCGATGGCCC
 TGTACCAGCTGGACCAGCAGTGCAGGCAGATCTTTGGGCCGATTTCGCCACTGCCCAACACCTCTGC
 TCAGGACGCTGCGCCCAGCTTTGGTGCCACTGATGGGGTGGAGCCCTGTGCCACACGAAGAATGGC
 AGCCTGCCCTGGGCTGACGGCACGCCGTGCGGGCCTGGGCACCTCTGCTCAGAAGGCAGTGTCTACCTG
 AGGAGGAAGTGGAGAGGCCAAGCCGTGGTAGATGGAGGCTGGGCACCGTGGGGACCCTGGGGAGAATG
 TTCTCGGACCTGTGGAGGAGGAGTACAGTTTTTACACCGTGAAGTGAAGGACCCGAGCCTCAGAATGGA
 GGAAGATACTGCCTGGGTGGGAGAGCAAGTACCAGTCATGCCACACGGAGGAATGCCCCCTGACGGGA
 AAAGCTTCAGGGAGCAGCAGTGTGAGAAGTATAATGCCTACAATTACACTGACATGGACGGGAATCTCCT
 GCAGTGGGTCCCAAGTATGCTGGGGTGTCCCCCGGGACCGCTGCAAGTTGTTCTGCCGAGCCCGGGG
 AGGAGCGAGTTCAAAGTGTTCGAGGCCAAGGTGATTGATGGCACCTGTGTGGGCCAGAAACTGGCCA
 TCTGTGTCGCTGGCCAGTGTGTCAAGGCCGGCTGTGACCATGTGGTGGACTCGCTCGGAAGCTGGACAA
 ATGCGGGGTGTGTGGGGGCAAAGGCAACTCCTGCAGGAAGGTCTCCGGTCCCTACCCCAACCAATTAT
 GGCTACAATGACATTGTACCATCCCAGCTGGTGCCTAATATTGACGTGAAGCAGCGGAGCCACCCGG
 GTGTGCAGAACGATGGAACTACCTGGCGCTGAAGACGGCTGATGGGCAGTACCTGCTCAACGGCAACT
 GGCCATCTCTGCCATAGAGCAGGACATCTTGGTGAAGGGGACCATCCTGAAGTACAGCGGCTCCATCGCC
 ACCCTGGAGCGCCTGCAGAGCTTCGGGCCCTTGCAGAGCCTCTGACAGTGCAGCTCCTGACAGTCCCTG
 GCGAGGTCTTCCCCCAAAGTCAAATACACCTTCTTTGTTCTAATGACGTGGACTTTAGCATGCAGAG
 CAGCAAAGAGAGACAAACCAACATCATCCAGCCGCTGCTCCACGCACAGTGGGTGCTGGGGGACTGG
 TCTGAGTGTCTAGCACCTGCGGGGCCGGTGGCAGAGGCGAACTGTAGAGTGCAGGGACCCCTCCGGCC
 AGGCTCTGCCACCTGCAACAAGGCTCTGAAACCCGAGGATGCCAAGCCCTGCGAAAGCCAGCTGTGCC
 CCTG

ACGCGTACGCGGCCGCTCGAGCAGAACTCATCTCAGAAGAGGATCTGGCAGCAAATGATATCCTGGATT
 ACAAGGATGACGACGATAAGGTTTAA

Protein Sequence: >RC212446 representing NM_007037
 Red=Cloning site Green=Tags(s)

MLPAPAAPRWPPLLLLLLLLPLARGAPARPAAGGQASELVVPTRLPGSAGELALHLSAFGKGFVLR LAPD
 DSFLAPDFKIERLGGSGRATGGERLRCGCFSGTVNGEPESLAAVSLCRGLSGSFLLDGEEFTIQPQGAG
 GSLSAQPHRLQRWGPAGARPLPRGPEWEVETGEGQRQERGDHQEDSEESQEEEAEGASEPPPLGATSRT
 KRFVSEARFVETLLVADASMAAFYGADLQNHILTLMSVAARIYKHPSIKNSINLMVVVKLVIVEDEKWGPE
 VSDNGGLTLRNFCNWQRRFNQPSDRHPEHYDTAILLTRQNF CGQEGLCDTLGVADIGTICDPNKSCSVIE
 DEGLQAHTLAHELGHVLSMPHDDSKPCTRLFGPMGKHHVMAPLFVHLNQTLPWSPCSAMYLTLLDGGH
 GDCLLDAPAAALPLPTGLPGRMALYQLDQCRQIFGPDFRHCNPTSAQDVCAQLWCHTDGAEP LCHTKNG
 SLPWADGTPCGPHLCSEGSCLPEEEVERPKPVVDGGWAPWGPWGECSRTC GGGVQF SHRECKDPEPQNG
 GRYCLGRRAKYQSCHTEECPPDGKSFREQQCEKYNA NYTMDGNLLQWVPKYAGVSPDRCKLFCRARG
 RSEFKVFEAKVIDGTLGCPETLAICVRGQCVKAGCDHVVDSPRKLDKCGVCGGKGNCRKVSGLTPTNY
 GYNDIVTIPAGATNIDVKQRSHPGVQNDGNYLALKTADGQYLLNGLAISAI EQDILVKGTILKYSGSIA
 TLERLQSFRLPEPLTVQLLTVPGEVFPKVKYTF FVPNDVDFSMQSSKERATTNI IQPLLHAQWVLGDW
 SECSSTCGAGWQRRTECRDPSGQASATCNKALKPEDAKPCESQLCPL

TRTRPLEQKLISEEDLAANDILDYKDDDDKV

Chromatograms: https://cdn.origene.com/chromatograms/mk6203_f01.zip

Restriction Sites: SgfI-MluI

Cloning Scheme:

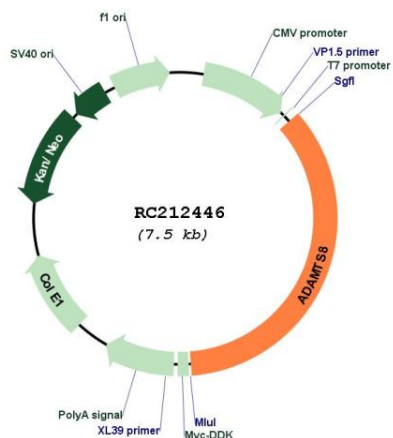
Cloning sites used for ORF Shuttling:



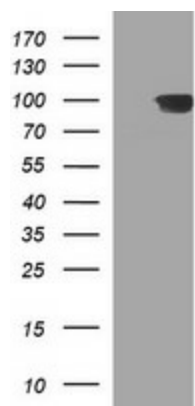
* The last codon before the Stop codon of the ORF

ACCN: NM_007037

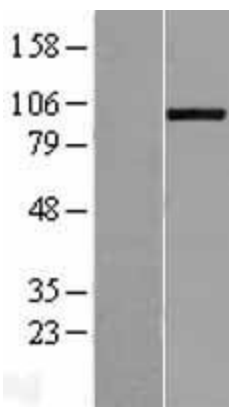
ORF Size:	2664 bp
OTI Disclaimer:	The molecular sequence of this clone aligns with the gene accession number as a point of reference only. However, individual transcript sequences of the same gene can differ through naturally occurring variations (e.g. polymorphisms), each with its own valid existence. This clone is substantially in agreement with the reference, but a complete review of all prevailing variants is recommended prior to use. More info
OTI Annotation:	This clone was engineered to express the complete ORF with an expression tag. Expression varies depending on the nature of the gene.
Components:	The ORF clone is ion-exchange column purified and shipped in a 2D barcoded Matrix tube containing 10ug of transfection-ready, dried plasmid DNA (reconstitute with 100 ul of water).
Reconstitution Method:	<ol style="list-style-type: none">1. Centrifuge at 5,000xg for 5min.2. Carefully open the tube and add 100ul of sterile water to dissolve the DNA.3. Close the tube and incubate for 10 minutes at room temperature.4. Briefly vortex the tube and then do a quick spin (less than 5000xg) to concentrate the liquid at the bottom.5. Store the suspended plasmid at -20°C. The DNA is stable for at least one year from date of shipping when stored at -20°C.
RefSeq:	NM_007037.6
RefSeq Size:	4028 bp
RefSeq ORF:	2670 bp
Locus ID:	11095
UniProt ID:	Q9UP79
Cytogenetics:	11q24.3
Protein Families:	Druggable Genome, Protease, Secreted Protein
MW:	96.3 kDa
Gene Summary:	This gene encodes a member of the ADAMTS (a disintegrin and metalloproteinase with thrombospondin motifs) protein family. Members of the family share several distinct protein modules, including a propeptide region, a metalloproteinase domain, a disintegrin-like domain, and a thrombospondin type 1 (TS) motif. Individual members of this family differ in the number of C-terminal TS motifs, and some have unique C-terminal domains. The encoded preproprotein is proteolytically processed to generate the mature enzyme. This enzyme contains two C-terminal TS motifs, and disrupts angiogenesis in vivo. A number of disorders have been mapped in the vicinity of this gene, most notably lung neoplasms. Reduced expression of this gene has been observed in multiple human cancers and this gene has been proposed as a potential tumor suppressor. [provided by RefSeq, Feb 2016]

Product images:


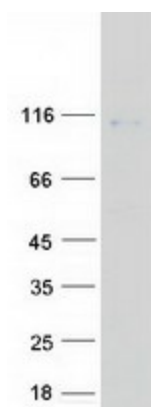
Circular map for RC212446



HEK293T cells were transfected with the pCMV6-ENTRY control (Cat# [PS100001], Left lane) or pCMV6-ENTRY ADAMTS8 (Cat# RC212446, Right lane) cDNA for 48 hrs and lysed. Equivalent amounts of cell lysates (5 ug per lane) were separated by SDS-PAGE and immunoblotted with anti-ADAMTS8 (Cat# [TA505684]). Positive lysates [LY402079] (100ug) and [LC402079] (20ug) can be purchased separately from OriGene.



Western blot validation of overexpression lysate (Cat# [LY402079]) using anti-DDK antibody (Cat# [TA50011-100]). Left: Cell lysates from untransfected HEK293T cells; Right: Cell lysates from HEK293T cells transfected with RC212446 using transfection reagent MegaTran 2.0 (Cat# [TT210002]).



Coomassie blue staining of purified ADAMTS8 protein (Cat# [TP312446]). The protein was produced from HEK293T cells transfected with ADAMTS8 cDNA clone (Cat# RC212446) using MegaTran 2.0 (Cat# [TT210002]).