

Product datasheet for **RC212435**

ARHGAP6 (NM_013423) Human Tagged ORF Clone

Product data:

Product Type:	Expression Plasmids
Product Name:	ARHGAP6 (NM_013423) Human Tagged ORF Clone
Tag:	Myc-DDK
Symbol:	ARHGAP6
Synonyms:	RHOGAP6; RHOGAPX-1
Mammalian Cell Selection:	Neomycin
Vector:	pCMV6-Entry (PS100001)
E. coli Selection:	Kanamycin (25 ug/mL)



[View online »](#)

ORF Nucleotide
Sequence:

>RC212435 representing NM_013423
Red=Cloning site Blue=ORF Green=Tags(s)

TTTTGTAATACGACTCACTATAGGGCGGCCGGGAATTCGTCGACTGGATCCGGTACCGAGGAGATCTGCC
GCC**CGGATCGCC**

ATGTCAGGCCCGCAGTGTACGGCTGAGGTACGTCCCATCCAGAGTCTCTCAGAGCTGGAGAGGGCCCGGC
TGCAGGAAGTGGCTTTTTATCAGTTGCAACAGGACTGTGACCTGAGCTGTGAGATCACCATTCCCAAAGA
TGGACAAAAGAGAAAGAAATCTTTAAGAAAGAAACTGGATTCACTAGGAAAGGAGAAAAACAAAGACAAA
GAATTCATCCCACAGGCATTTGGAATGCCCTTATCCCAAGTCATTGCGAATGACAGGGCCTATAAACTCA
AGCAGGACTTGCAGAGGGACGAGCAGAAAGATGCATCTGACTTTGTGGCTTCCCTCCTCCCATTTGGAAA
TAAAAGACAAAACAAAGAACTCTCAAGCAGTAACATCTCTCAGCTCAACCTCAGAAACACCGAATGAG
TCAACGTCCCAAACACCCCGAACCGGCTCCTCGGGCTAGGAGGAGGGGTGCCATGTCAGTGGATTCTA
TCACCGATCTTGATGACAATCAGTCTCGACTACTAGAAGCTTTACAACCTTCCCTTGCTGCTGAGGCTCA
AAGTAAAAGGAAAAAGCCAGAGATAAGAAACTCAGTCTGAATCCTATTTACAGACAGGTCCTAGGCTG
GTGGACAGCTGTGTGACACCTAGAAAAACATGGCCTCCAGACAGTGGGGATATCCGAGTTGGAAGCT
CAAAAAAGAGAGTGAGACAATTACGTGAGGAATTTGACCGTGGGATTGATGTCTCTCTGGAGGAGGAGCA
CAGTGTTCATGATGTGGCAGCCTTGCTGAAAGAGTTTCTGAGGGACATGCCAGACCCCTTCTCACCAGG
GAGCTGTACACAGCTTTCATCAACACTCTTGTGGAGCCGGAGGAACAGCTGGGCACCTTGCAGCTCC
TCATATACCTTCTACCTCCCTGCAACTGCGACACCCTCCACCGCTGCTACAGTTCTCTCCATCGTGGC
CAGGCATGCCGATGACAACATCAGCAAAGATGGGCAAGAGGTCAGTGGGAATAAAATGACATCTCTAAAC
TTAGCCACCATATTTGGACCAACCTGCTGCACAAGCAGAAGTCATCAGACAAAGAATTTCAAGTTCAGA
GTTTCAGCCCGGGCTGAGGAGAGCACGGCCATCATCGCTGTTGTGCAAAAGATGATTGAAAATATGAGC
CCTGTTTCATGGTTCCCCCAGATCTCCAGAACGAAGTGTGATCAGCCTGTTAGAGACCGATCCTGATGTC
GTGGACTATTTACTCAGAAGAAAGGCTTCCCAATCATCAAGCCCTGACATGCTGCAAGTTCGGAAGTTTCT
TTTCCGTGGGAGGGAGGCATTCTACAGACTCCAACAAGGCCTCCAGCGGAGACATCTCCCTTATGA
CAACAACCTCCCAAGTGTGTCTGAGCGCTCCCTGCTGGCTATGCAAGAGGACGCGGCCCGGGGGCTCG
GAGAAGCTTTACAGAGTGCCAGGGCAGTTTATGCTGGTGGGCCACTTGTGCTGTCGTCGTCGTCGTCGTCG
GTTCTCCTGGACCAAGGCTTGGGAAAGATCTGTCAGAGGAGCCTTTCGATATCTGGGAACTTGGCATT
AACATTAAGCGGATCCAAGACCCAGGAATGACAGGTTCTCTGGAGACATTTTGAAGCAGCTCC
CTAAGAGCGGGCCCTGCTCCCTTCTCAAGGAACTGTCCCAAATGGCCTCGTGGCAGGGGAGCC
CCGACAGCTGGACAGCGACACGACAGGGGCTCGGAGGACTCAGGCCGACGCCCCCGCAGCGAGGGCAG
GGCCACCTGCGGTGTGCGCGCCTGACGACGCCCCACGTCCAGGTGGCAGGGAAGCCGAGCGGCC
ACGGCCAGGTGCGAGCAGTACTTGACCCTGAGCGGCGCCACGACCTCAGCGAGAGTGAGCTGGATGTGG
CCGGGCTGCAGAGCCGGGCCACACCTCAGTGCACAAAGACCCCATGGGAGTGGGAGGGATGACAAGCGGC
CCCGCTCCATACCCGGGCCAGGGAAGCCGCGGACGCGCAGCCTGGATCCAGGGGCCCGGAAGGC
GTGGAGACACCCACGGACCAGGGAGGCCAAGCAGCCGAGCGAGAGCAGCAGGTACGCAGAAAAACTGA
GCAGCGCCAACTCCCTGCCAGCGGGCAGCAGGACAGTCCGCGCTGGGGACGCTGGCTGGCTCGACTG
GCAGAGAGCGCTGGCAGATCTGGGAGCTCCTGTCGACCGACAACCCCGATGCCCTGCCGAGACGCTG
GTC

ACGCGTACGCGGCCGCTCGAGCAGAACTCATCTCAGAAGAGGATCTGGCAGCAATGATATCCTGGATT
ACAAGGATGACGACGATAAGGTTTAA

Protein Sequence: >RC212435 representing NM_013423
Red=Cloning site Green=Tags(s)

MSGRSVRLRSVPIQSLSELERARLQEVAFYQLQQDCDLSCQITIPKDGQKRKSLRKKLDSLGEKKNKDK
EFIPQAFGMPLSQVIANDRAYKLKQDLQRDEQKDASDFVASLLPFGNKRQNKELSSSNSSLSTSETPNE
STSPNTPPEPAPRARRRGAMSVDSITDLDDNQSRLLLEALQLSLPAEAQSKKEKARDKKLSLNPIYRQVPRL
VDSCCQHLEKHGLQTVGIFRVGSSKKRVRQLREEFDRGIDVSLSEEHVHDVAALLKEFLRDMPPDLLTR
ELYTAFINTLLLEPEEQGLQLLIYLLPPCNCNTLHRLQLFLSIVARHADDNISKDGQEVGTGNKMTSLN
LATIFGNLLHKQKSSDKEFSVQSSARAEESTAI IAVVQKMIENYEALFMVPPDLQNEVLISLLETDPDV
VDYLLRRKASQSSSPDMLQSEVSFVSGGRHSSTDSNKASSGDISPYDNNSPVLSERSLLAMQEDAAPGGS
EKLYRVPQGFMVLVGHLSSSKSRESSPGPRLGKDLSEEPFDIWGTWHSTLKS GSKDPGMTGSSGDI FESS
LRAGPCSLSQGNLSPNWRWQGS PAELSDTQGARRTQAAAPATEGRAHPAVSRACSTPHVQVAGKAERP
TARSEQYLTLGAHDLSESELDVAGLQSRATPQCQRPHGSGRDDKRPPPPYPGPGKPAAAAAAWIQGPPEG
VETPTDQGGQAAEREQQVTQKKLSSANSLPAGEQDSPRLGDAGWLDWQERERWQIWELLSTDNPDALPETL
V

TRTRPLEQKLI SEEDLAANDILDYKDDDDKV

Chromatograms: https://cdn.origene.com/chromatograms/mk6680_a04.zip

Restriction Sites: Sgfl-Mlul

Cloning Scheme:


ACCN: NM_013423

ORF Size: 2313 bp

OTI Disclaimer: The molecular sequence of this clone aligns with the gene accession number as a point of reference only. However, individual transcript sequences of the same gene can differ through naturally occurring variations (e.g. polymorphisms), each with its own valid existence. This clone is substantially in agreement with the reference, but a complete review of all prevailing variants is recommended prior to use. [More info](#)

OTI Annotation: This clone was engineered to express the complete ORF with an expression tag. Expression varies depending on the nature of the gene.

Components: The ORF clone is ion-exchange column purified and shipped in a 2D barcoded Matrix tube containing 10ug of transfection-ready, dried plasmid DNA (reconstitute with 100 ul of water).

Reconstitution Method:

1. Centrifuge at 5,000xg for 5min.
2. Carefully open the tube and add 100ul of sterile water to dissolve the DNA.
3. Close the tube and incubate for 10 minutes at room temperature.
4. Briefly vortex the tube and then do a quick spin (less than 5000xg) to concentrate the liquid at the bottom.
5. Store the suspended plasmid at -20°C. The DNA is stable for at least one year from date of shipping when stored at -20°C.

RefSeq: [NM_013423.3](#)

RefSeq Size: 3961 bp

RefSeq ORF: 2316 bp

Locus ID: 395

UniProt ID: [O43182](#)

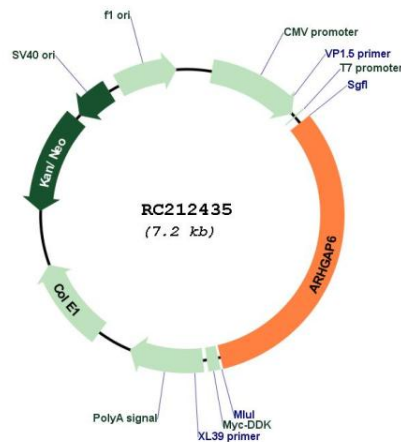
Cytogenetics: Xp22.2

Domains: RhoGAP

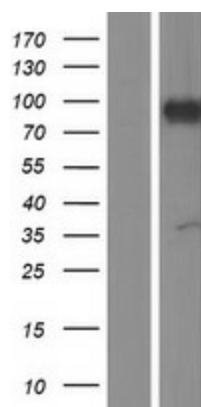
MW: 84.7 kDa

Gene Summary: This gene encodes a member of the rhoGAP family of proteins which play a role in the regulation of actin polymerization at the plasma membrane during several cellular processes. This protein is thought to have two independent functions, one as a GTPase-activating protein with specificity for RhoA, and another as a cytoskeletal protein that promotes actin remodeling. Multiple alternatively spliced transcript variants encoding different isoforms have been found for this gene. [provided by RefSeq, Jul 2008]

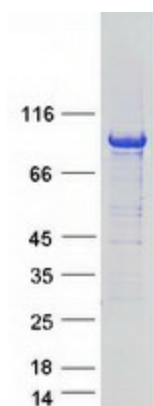
Product images:



Circular map for RC212435



Western blot validation of overexpression lysate (Cat# [LY415597]) using anti-DDK antibody (Cat# [TA50011-100]). Left: Cell lysates from untransfected HEK293T cells; Right: Cell lysates from HEK293T cells transfected with RC212435 using transfection reagent MegaTran 2.0 (Cat# [TT210002]).



Coomassie blue staining of purified ARHGAP6 protein (Cat# [TP312435]). The protein was produced from HEK293T cells transfected with ARHGAP6 cDNA clone (Cat# RC212435) using MegaTran 2.0 (Cat# [TT210002]).