

Product datasheet for RC212433

PTGES2 (NM_198938) Human Tagged ORF Clone

Product data:

Product Type:	Expression Plasmids
Product Name:	PTGES2 (NM_198938) Human Tagged ORF Clone
Tag:	Myc-DDK
Symbol:	PTGES2
Synonyms:	C9orf15; GBF-1; GBF1; mPGES-2; PGES2
Mammalian Cell Selection:	Neomycin
Vector:	pCMV6-Entry (PS100001)
E. coli Selection:	Kanamycin (25 ug/mL)
ORF Nucleotide Sequence:	>RC212433 representing NM_198938 Red=Cloning site Blue=ORF Green=Tags(s)

TTTTGTAATACGACTCACTATAGGGCGCCGGGAATTCGTCGACTGGATCCGGTACCGAGGAGATCTGCC
GCC**CGATCGCC**

ATGAAGGCTGTGAACGAGCAGGGCAAGGAGGTGACCGAGTTCGGCAATAAGTACTGGCTCATGCTCAACG
AGAAGGAGGCCAGCAAGTGTATGGTGGGAAGGAGGCCAGGACGGAGGAGATGAAGTGGCGGCAGTGGGC
GGACGACTGGCTGGTGCACCTGATCTCCCCAATGTGTACCGCACGCCACCGAGGCTCTGGCGTCCTTT
GACTACATTGTCGCGAGGGCAAGTTCGGAGCCGTGGAGGGTCCCGTGGCCAAGTACATGGGTGCAGCGG
CCATGTACCTCATCAGCAAGCGACTCAAGAGCAGGCACCGCCTCCAGGACAACGTGCGCGAGGACCTCTA
TGAGGCTGCTGACAAGTGGGTGGCTGCTGTGGCAAGGACCGGCCCTTCATGGGGGGCCAGAAGCCGAAT
CTCGCTGATTTGGCGGTGTATGGCGTGTGCGTGTGATGGAGGGGCTGGATGCATTTCGATGACCTGATGC
AGCACACGCACATCCAGCCCTGGTACTGCGGGTGGAGAGGGCCATCACCGAGGCCCTCCCGACGCGAC

ACGCGTACGCGGCCGCTCGAGCAGAACTCATCTCAGAAGAGGATCTGGCAGCAAATGATATCCTGGATT
ACAAGGATGACGACGATAAGGTTTAA

Protein Sequence:	>RC212433 representing NM_198938 Red=Cloning site Green=Tags(s)
-------------------	--

MKAVNEQGKEVTEFGNKYWLMLNEKEAQQVYGGKEARTEEMKWRQWADDWL VHLISPNVYRTPTEALASF
DYIVREGKFGAVEGAVAKYMGAAAMYLISKRLKSRHRLQDNVREDLYEAADKWVAAVGKDRPFMGGQKPN
LADLAVYGVLRVMEGLDAFDDLMQHITHIQPWYLRVERAITEASPAH

TRTRPLEQKLISEEDLAANDILDYKDDDDKV

Chromatograms:	https://cdn.origene.com/chromatograms/mk6436_f05.zip
----------------	---



[View online »](#)

Restriction Sites: SgfI-MluI

Cloning Scheme:



ACCN: NM_198938

ORF Size: 558 bp

OTI Disclaimer: The molecular sequence of this clone aligns with the gene accession number as a point of reference only. However, individual transcript sequences of the same gene can differ through naturally occurring variations (e.g. polymorphisms), each with its own valid existence. This clone is substantially in agreement with the reference, but a complete review of all prevailing variants is recommended prior to use. [More info](#)

OTI Annotation: This clone was engineered to express the complete ORF with an expression tag. Expression varies depending on the nature of the gene.

Components: The ORF clone is ion-exchange column purified and shipped in a 2D barcoded Matrix tube containing 10ug of transfection-ready, dried plasmid DNA (reconstitute with 100 ul of water).

Reconstitution Method:

1. Centrifuge at 5,000xg for 5min.
2. Carefully open the tube and add 100ul of sterile water to dissolve the DNA.
3. Close the tube and incubate for 10 minutes at room temperature.
4. Briefly vortex the tube and then do a quick spin (less than 5000xg) to concentrate the liquid at the bottom.
5. Store the suspended plasmid at -20°C. The DNA is stable for at least one year from date of shipping when stored at -20°C.

RefSeq: [NM_198938.1](#), [NP_945176.1](#)

RefSeq Size: 1642 bp

RefSeq ORF: 561 bp

Locus ID: 80142

UniProt ID: [Q9H7Z7](#)

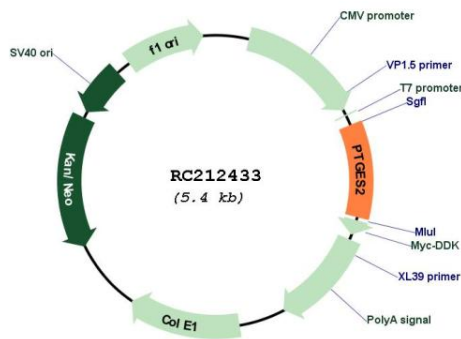
Cytogenetics: 9q34.11

Protein Pathways: Arachidonic acid metabolism, Metabolic pathways

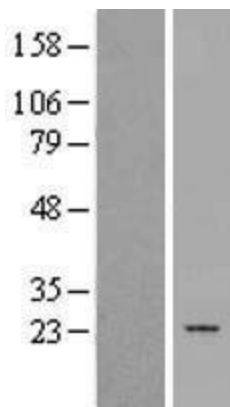
MW: 21.2 kDa

Gene Summary: The protein encoded by this gene is a membrane-associated prostaglandin E synthase, which catalyzes the conversion of prostaglandin H2 to prostaglandin E2. This protein also has been shown to activate the transcription regulated by a gamma-interferon-activated transcription element (GATE). Multiple transcript variants have been found for this gene. [provided by RefSeq, Jun 2009]

Product images:



Circular map for RC212433



Western blot validation of overexpression lysate (Cat# [LY404654]) using anti-DDK antibody (Cat# [TA50011-100]). Left: Cell lysates from untransfected HEK293T cells; Right: Cell lysates from HEK293T cells transfected with RC212433 using transfection reagent MegaTran 2.0 (Cat# [TT210002]).