

Product datasheet for **RC212430**

GABRA2 (NM_000807) Human Tagged ORF Clone

Product data:

Product Type:	Expression Plasmids
Product Name:	GABRA2 (NM_000807) Human Tagged ORF Clone
Tag:	Myc-DDK
Symbol:	GABRA2
Synonyms:	DEE78; EIEE78
Mammalian Cell Selection:	Neomycin
Vector:	pCMV6-Entry (PS100001)
E. coli Selection:	Kanamycin (25 ug/mL)



[View online »](#)

ORF Nucleotide Sequence:

>RC212430 representing NM_000807
 Red=Cloning site Blue=ORF Green=Tags(s)

TTTTGTAATACGACTCACTATAGGGCGGCCGGAATTCGTCGACTGGATCCGGTACCGAGGAGATCTGCC
 GCC**CGCATCGCC**

ATGAAGACAAAATTGAACATCTACAACATCGCAGTTCCTGCTTTTTGTTTTCTTGGTGTGGGACCCTGCCA
 GGTTGGTGTGGCTAACATCCAAGAAGATGAGGCTAAAAATAACATTACCATCTTTACGAGAATTCTTGA
 CAGACTTCTGGATGGTTACGATAATCGGCTTAGACCAGGACTGGGAGACAGTATTACTGAAGTCTTCACT
 AACATCTACGTGACCAGTTTTGGCCCTGTCTCAGATACAGATATGGAATATACAATTGATGTTTTCTTTC
 GACAAAAATGGAAAGTGAACGTTTAAATTTAAAGGTCTATGAATATCCTTCGACTAAACAATTTAAT
 GGCTAGCAAAATCTGGACTCCAGATACCTTTTTTCAATGGGAAGAAATCAGTAGCTCATAATATGACA
 ATGCCAAATAAGTTGCTTCGAATTCAGGATGATGGGACTCTGCTGTATACCATGAGGCTTACAGTCAAG
 CTGAATGCCCAATGCACTTGGAGGATTTCCCAATGGATGCTCATTATGCTCTGAAATTTGGCAGCTA
 TGCATATACAACCTCAGAGGTCCTTATATTTGGACTTACAATGCATCTGATTCACTACAGGTTGCTCCT
 GATGGCTCTAGGTTAAATCAATATGACCTGCTGGCCAATCAATCGGAAAGGAGACAATTAATCCAGTA
 CAGGTGAATATACTGTAATGACAGCTCATTTCACCTGAAAAGAAAAATTGGGTATTTGTGATCAAAC
 CTATCTGCCTTGCACTCATGACTGTCATTCTCTCCAAGTTTCACTTCTGGCTTAACAGAGAATCTGTGCC
 GCAAGAACTGTGTTTGGAGTAACAACCTGCTTAACAATGACAACCTAAGCATCAGTGTCTCGAATTCTC
 TCCCAAGTGGCTTATGCAACTGCCATGGACTGGTTTATTGCTGTTTGTATGCATTTGTGTTCTCTGC
 CCTAATTGAATTTGCAACTGTTAATTACTTCACAAAAGAGGATGGGCTTGGGATGGGAAGAGTGTAGTA
 AATGACAAGAAAAAGAAAAGGCTTCCGTTATGATACAGAACAACGCTTATGCAGTGGCTGTTGCCAATT
 ATGCCCCGAATCTTTCAAAGATCCAGTCTCTCCACCATCTCCAAGAGTGAACCAAGCCAGCAACCCAA
 CAAGAAGCCAGAAAAACAAGCCAGCTGAAGCAAAGAAAAACTTTCAACAGTGTTAGCAAAAATTGACAGAATG
 TCCAGAATAGTTTTTCCAGTTTTGTTGGTACCTTTAATTTAGTTTACTGGGCTACATATTTAAACAGAG
 AACCTGTATTAGGGGTCAGTCTCT

ACGCGTACGCGGCCGCTCGAGCAGAAACTCATCTCAGAAGAGGATCTGGCAGCAATGATATCCTGGATT
 ACAAGGATGACGACGATAAGGTTTAA

Protein Sequence:

>RC212430 representing NM_000807
 Red=Cloning site Green=Tags(s)

MKTKLNIYNMQFLLFVFLVWDPARLVLANIQEDEAKNNITIFTRILDRLLDGYDNRLRPLGDSITEVFT
 NIYVTSFGPVSDTMEYIDVFRQKWDERLKFKGPMNILRLNNLMASKIWPDTFFHNGKKSVAHNMT
 MPNKLLRIQDDGTLTYMRLTVQAECPMHLEDPMDAHSCPLKFGSYAYTTSEVTYIWTYNASDSVQVAP
 DGSRLNQYDLLGQSIGKETIKSSTGEYVMTAHFHLKRKIGYFVIQTYLPCIMTVILSQVSFWLNRESVP
 ARTVFGVTTVLMTTLSISARNSLPKVAYATAMDWFIIVCYAFVFSALIEFATVNYFTKRGWAWDGKSVV
 NDKKKEKASVMIQNNAYAVAVANYAPNLSKDPVLSISKATTPENKPKPENKPAEAKKTFNSVSKIDRM
 SRIVFPVLFGTFNLVYWATYLNREPVLGVSP

TRTRPLEQKLISEEDLAANDILDYKDDDDKV

Chromatograms:

https://cdn.origene.com/chromatograms/mg2436_f02.zip

Restriction Sites:

Sgfl-Mlul

Cloning Scheme:


ACCN: NM_000807

ORF Size: 1353 bp

OTI Disclaimer: Due to the inherent nature of this plasmid, standard methods to replicate additional amounts of DNA in E. coli are highly likely to result in mutations and/or rearrangements. Therefore, OriGene does not guarantee the capability to replicate this plasmid DNA. Additional amounts of DNA can be purchased from OriGene with batch-specific, full-sequence verification at a reduced cost. Please contact our customer care team at custsupport@origene.com or by calling 301.340.3188 option 3 for pricing and delivery.

The molecular sequence of this clone aligns with the gene accession number as a point of reference only. However, individual transcript sequences of the same gene can differ through naturally occurring variations (e.g. polymorphisms), each with its own valid existence. This clone is substantially in agreement with the reference, but a complete review of all prevailing variants is recommended prior to use. [More info](#)

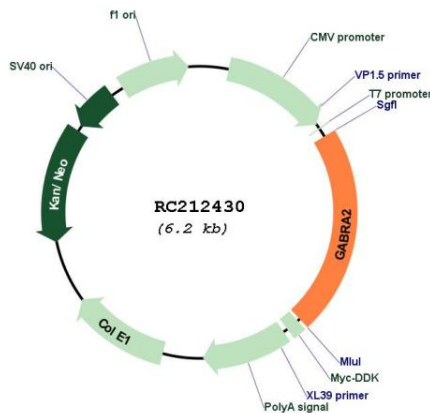
OTI Annotation: This clone was engineered to express the complete ORF with an expression tag. Expression varies depending on the nature of the gene.

Components: The ORF clone is ion-exchange column purified and shipped in a 2D barcoded Matrix tube containing 10ug of transfection-ready, dried plasmid DNA (reconstitute with 100 ul of water).

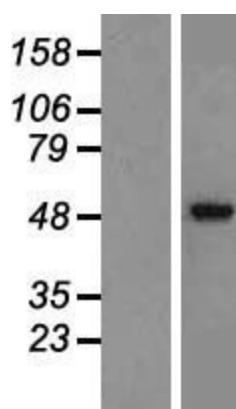
- Reconstitution Method:**
1. Centrifuge at 5,000xg for 5min.
 2. Carefully open the tube and add 100ul of sterile water to dissolve the DNA.
 3. Close the tube and incubate for 10 minutes at room temperature.
 4. Briefly vortex the tube and then do a quick spin (less than 5000xg) to concentrate the liquid at the bottom.
 5. Store the suspended plasmid at -20°C. The DNA is stable for at least one year from date of shipping when stored at -20°C.

RefSeq:	NM_000807.4
RefSeq Size:	2189 bp
RefSeq ORF:	1356 bp
Locus ID:	2555
UniProt ID:	P47869
Cytogenetics:	4p12
Domains:	Neur_chan_memb, Neur_chan_LBD
Protein Families:	Druggable Genome, Ion Channels: Cys-loop Receptors, Transmembrane
Protein Pathways:	Neuroactive ligand-receptor interaction
MW:	51.1 kDa
Gene Summary:	GABA is the major inhibitory neurotransmitter in the mammalian brain where it acts at GABA-A receptors, which are ligand-gated chloride channels. Chloride conductance of these channels can be modulated by agents such as benzodiazepines that bind to the GABA-A receptor. At least 16 distinct subunits of GABA-A receptors have been identified. Alternatively spliced transcript variants encoding different isoforms have been found for this gene. [provided by RefSeq, Nov 2013]

Product images:



Circular map for RC212430



Western blot validation of overexpression lysate (Cat# [LY426471]) using anti-DDK antibody (Cat# [TA50011-100]). Left: Cell lysates from untransfected HEK293T cells; Right: Cell lysates from HEK293T cells transfected with [RC225743] using transfection reagent MegaTran 2.0 (Cat# [TT210002]).