

## Product datasheet for **RC212429**

### Menin (MEN1) (NM\_130802) Human Tagged ORF Clone

#### Product data:

Product Type:	Expression Plasmids
Product Name:	Menin (MEN1) (NM_130802) Human Tagged ORF Clone
Tag:	Myc-DDK
Symbol:	Menin
Synonyms:	MEAI; SCG2
Mammalian Cell Selection:	Neomycin
Vector:	pCMV6-Entry (PS100001)
E. coli Selection:	Kanamycin (25 ug/mL)



[View online »](#)

**ORF Nucleotide Sequence:**

>RC212429 representing NM\_130802  
 Red=Cloning site Blue=ORF Green=Tags(s)

TTTTGTAATACGACTCACTATAGGGCGGCCGGGAATTCGTCGACTGGATCCGGTACCGAGGAGATCTGCC  
 GCC**CGGATCGCC**

ATGGGGCTGAAGGCCGCCAGAAGACGCTGTTCCCGCTGCGCTCCATCGACGACGTGGTGGCCCTGTTTG  
 CTGCCGAGCTGGGCCGAGAGGAGCCGACTGGTCTCCTTTCTTGGTCTGGGCTTCGTGGAGCATT  
 TCTGGCTGTCAACCGCGTCATCCCTACCAACGTTCCCGAGCTCACCTTCCAGCCCAGCCCCGCCCGAC  
 CCGCTGGCGGCCTCACCTACTTTCCCGTGGCCGACCTGTCTATCATCGCCGCCCTCTATGCCCGTTCA  
 CCGCCAGATCCGAGGCGCGTGCACCTGTCCCTCTATCCTCGAGAAGGGGTGTCTCCAGCCGTGAGCT  
 GGTGAAGAAGGTCTCGATGTATATGGAACAGCCTCAGCCGCTCCTACTTCAAGGATCGGGCCACATC  
 CAGTCCCTCTCAGCTTATCACAGTTGGAGCCAGTAGGCACCAAATTGGACAGCTCCGGTGTGGCT  
 TTGCTGTGGTGGGGCTGCCAGGCCCTGGGTCTCCGGGATGTCCACCTCGCCCTGTCTGAGGATCATGC  
 CTGGGTAGTGTGGGCCAATGGGGAGCAGACAGCTGAGGTACCTGGCACGGCAAGGGCAACGAGGAC  
 CGCAGGGGCCAGACAGTCAATGCCGGTGTGGCTGAGCGGAGCTGGCTGTACCTGAAAGGATCATACATGC  
 GCTGTGACCGCAAGATGGAGGTGGCGTTTATGGTGTGTGCCATCAACCCTTCCATTGACCTGCACACCGA  
 CTCGCTGGAGCTTCTGCAGCTGCAGCAGAAGCTGCTCTGGCTGCTCTATGACCTGGGACATCTGAAAGG  
 TACCCCATGGCCTTAGGGAACCTGGCAGATCTAGAGGAGCTGGAGCCACCCCTGGCCGGCCAGACCCAC  
 TCACCCTTACCACAAGGCATTGCCTCAGCCAAGACCTACTATCGGGATGAACACATCTACCCCTACAT  
 GTACCTGGCTGGTACCCTGTCCGAACCGCAATGTGCGGGAAGCCCTGCAGGCCGCGGCGGACACGGCC  
 ACTGTCTCCAGGACTACAACCTACTGCCGGAAGACGAGGAGATCTACAAGGAGTCTTTGAAGTAGCCA  
 ATGATGTATCCCAACCTGCTGAAGGAGGCAGCCAGCTTGTCTGGAGCGGGCGAGGACGGCCGGGGGA  
 GCAAAGCCAGGGCACCCAGAGCCAAGGTTCCGCCCTCCAGGACCTGAGTGCTTCGCCACCTGCTGCGA  
 TTCTACGACGGCATCTGCAAATGGGAGGAGGCGAGTCCCACGCCCTGTGCTGCACGTGGGCTGGGCCACCT  
 TTCTTGTGACGTCCCTAGGCCGTTTTGAGGGACAGGTGCGGCAGAAGGTGCGCATAGTGAGCCGAGAGGC  
 CGAGGCGGCCGAGGCCGAGGAGCCGTGGGGCGAGGAAGCCGGGAAGGCCGGCGGGGCCACGGCGG  
 GAGTCCAAGCCAGAGGAGCCCCCGCCCAAGAAGCCAGCACTGGACAAGGGCTGGGCACCGGCCAGG  
 GTGCAGTGTGAGGACCCCGGAAGCCTCCTGGGACTGTGCTGGCACAGCCCGAGGCCCTGAAGGTGG  
 CAGCACGGCTCAGGTGCCAGCACCCGACGATCACCACCGCCGGAGGTCAGTGTCTACTTTCCAGAGT  
 GAGAAGATGAAGGCATGAAGGAGCTGCTGGTGGCCACCAAGATCAACTCGAGCGCCATCAAGCTGCAAC  
 TCACGGCACAGTCGCAAGTGCAGATGAAGAAGCAGAAAGTGTCCACCCTAGTGACTACACTCTGTCTTT  
 CCTCAAGCGGCAGCGCAAAGCCTC

**ACGCGT**ACGCGGCCGCTCGAGCAGAACTCATCTCAGAAGAGGATCTGGCAGCAAATGATATCCTGGATT  
 ACAAGGATGACGACGATAAGGTTTAA

**Protein Sequence:**

>RC212429 representing NM\_130802  
 Red=Cloning site Green=Tags(s)

MGLKAAQKTLFPLRSIDVVRFLFAAELGREPDLVLLSLVLGFVEHFLAVNRVIPTNVPETFQPSAPD  
 PPGGLTYFPVADLSIIAALYARFTAQIRGAVDSLYPEGGVSSRELVKKVSDVIWNSLSRSYFKDRAHI  
 QSLFSFITGWSPVTKLDSSGVAFVVGACQALGLRDVHLALSEDHAWVVFPGNGEQTAEVTHWKGND  
 RRGQTVNAGVAERSWL YLKGSYMRCDRMEVAFMVCAINPSIDLHTDSLELLQLQQKLLWLLYDLGHLER  
 YPMALGNLADLELEPTPGRPDPLTYHKGIASAKTYRDEHIYPYMYLAGYHCRNRNVREALQAWADTA  
 TVIQDYNCREDEEIIYKEFFEANDVIPNLLKEAASLLEAGEERPGEQSQTQSQGSALQDPECFALLR  
 FYDGICKWEEGSPVPLHVGWATFLVQSLGRFEGQVRQKVRIVSREAAEAEEEPWGEEAREGRRRPRR  
 ESKPEEPPPKPALDKLGTGGQAVSGPPRPPGTVAGTARGPEGGSTAQVPAPAASPPPEGPVLTFSQ  
 EKMKGMKELLVATKINSSAIKLQLTAQSQVQMKKQKVSTPSDYTLSFLKRQRKGL

**TRTRPLEQKLI**SEEDLAANDILDYKDDDDKV

**Chromatograms:** [https://cdn.origene.com/chromatograms/mk8069\\_h03.zip](https://cdn.origene.com/chromatograms/mk8069_h03.zip)

**Restriction Sites:** SgfI-MluI

**Cloning Scheme:**



**ACCN:** NM\_130802

**ORF Size:** 1845 bp

**OTI Disclaimer:** The molecular sequence of this clone aligns with the gene accession number as a point of reference only. However, individual transcript sequences of the same gene can differ through naturally occurring variations (e.g. polymorphisms), each with its own valid existence. This clone is substantially in agreement with the reference, but a complete review of all prevailing variants is recommended prior to use. [More info](#)

**OTI Annotation:** This clone was engineered to express the complete ORF with an expression tag. Expression varies depending on the nature of the gene.

**Components:** The ORF clone is ion-exchange column purified and shipped in a 2D barcoded Matrix tube containing 10ug of transfection-ready, dried plasmid DNA (reconstitute with 100 ul of water).

- Reconstitution Method:**
1. Centrifuge at 5,000xg for 5min.
  2. Carefully open the tube and add 100ul of sterile water to dissolve the DNA.
  3. Close the tube and incubate for 10 minutes at room temperature.
  4. Briefly vortex the tube and then do a quick spin (less than 5000xg) to concentrate the liquid at the bottom.
  5. Store the suspended plasmid at -20°C. The DNA is stable for at least one year from date of shipping when stored at -20°C.

**Note:** Plasmids are not sterile. For experiments where strict sterility is required, filtration with 0.22um filter is required.

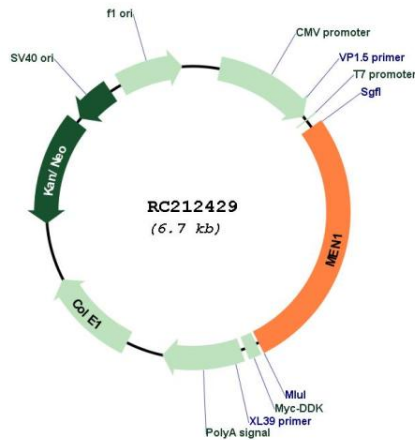
**RefSeq:** [NM\\_130802.2](#), [NP\\_570714.1](#)

**RefSeq Size:** 3174 bp

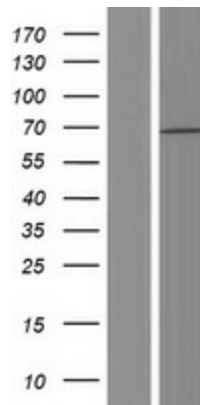
RefSeq ORF: 1848 bp  
 Locus ID: 4221  
 UniProt ID: [O00255](#)  
 Cytogenetics: 11q13.1  
 Protein Families: Druggable Genome, Transcription Factors  
 MW: 67.8 kDa

**Gene Summary:** This gene encodes menin, a tumor suppressor associated with a syndrome known as multiple endocrine neoplasia type 1. Menin is a scaffold protein that functions in histone modification and epigenetic gene regulation. It is thought to regulate several pathways and processes by altering chromatin structure through the modification of histones. [provided by RefSeq, May 2019]

### Product images:



Circular map for RC212429



Western blot validation of overexpression lysate (Cat# [LY408955]) using anti-DDK antibody (Cat# [TA50011-100]). Left: Cell lysates from untransfected HEK293T cells; Right: Cell lysates from HEK293T cells transfected with RC212429 using transfection reagent MegaTran 2.0 (Cat# [TT210002]).