

Product datasheet for **RC212424**

EHM2 (EPB41L4B) (NM_019114) Human Tagged ORF Clone

Product data:

Product Type:	Expression Plasmids
Product Name:	EHM2 (EPB41L4B) (NM_019114) Human Tagged ORF Clone
Tag:	Myc-DDK
Symbol:	EHM2
Synonyms:	CG1; EHM2; LULU2
Mammalian Cell Selection:	Neomycin
Vector:	pCMV6-Entry (PS100001)
E. coli Selection:	Kanamycin (25 ug/mL)



[View online »](#)

ORF Nucleotide Sequence:

>RC212424 representing NM_019114
 Red=Cloning site Blue=ORF Green=Tags(s)

TTTTGTAATACGACTCACTATAGGGCGGCCGGGAATTCGTCGACTGGATCCGGTACCGAGGAGATCTGCC
 GCC**CGCATCGCC**

ATGCTGCGGTTCTCGCGCCGACCTTTGGCCGCCGCTCCATGCAGCGCTACGCGCGGGCGCGCGGGGCG
 GCGGGGCGCGCGGCTGGGGGACGAGCGGATGGGGGCCACGGGGGGCCCGGCCCGCCGCTCCTC
 CTCGGCGCTGCCCGCGCGCCGGGGGACGCTGTTCCCGCGGGCGCGGGGCCCTGCTCACCGCGGC
 GCGGCCGTGCACATCTCCGCCCGCGCGCCGCAAGGCCACCCTACTGCCGCTTCTCTGCTCGACG
 GGACCGAAGTGAGCGTGGACCTGCCAAACATGCCAAAGGCCAGGATTTGTTGATCAGATTGTGTACCA
 CTTGGACCTTGTTGAAACAGATTACTTTGGCCTCCAGTTCCTCGACTCTGCCAGTTGCGCACTGGCTG
 GATCATGCCAAACCCATAAAAAAGCAGATGAAAATTGGACCTGCTTATGCTTTACACTTTCGAGTTAAAT
 ACTATTCTTCAGAACAAACAACCTTCGTGAGGAGTTTACAAGGTACCTGTTTGTTCACAACTCAGGCA
 TGACATTTCTTGGAAAATTGAAATGCCCTTATGAAACAGCTGTGAATTAGCTGCTCTGTCTACAA
 GCGGAGCTTGGGAGTGCAGCTTCCAGAACACACACCAGAGCTTGTGTCTGAGTTTCGGTTCATCCAA
 ATCAGACAGAAGCAATGGAATTTGATATCTCCAGAGATGGAAAGAGTGCAGGGGAAAGAGCCCTGCCCA
 GGCGGAACTCTCCTATCTGAATAAAGCGAAGTGGCTGGAATGTATGGGGTAGACATGCACGTTGTCAGG
 GGAAGAGATGGCTGTGAATATTCTTGGACTGACCCCGACAGGCATATTAATCTTTGAAGGAGCTAACAA
 AAATAGGCTTATCTTTTGGCCTAAAATTACAAAAATGGATTTTAAAAAGAGCAAATTGACACTCGTGGT
 GGTCGAGGATGATGATCAGGGACGTGAGCAAGAGCACAGTTCGTTTCCGGTTAGACAGTGCAGGACC
 TGCAAAACACCTTTGGAAGTGTGCACTGAGCACCACGCATTCTCCGACTGCGGACGCCAGGAAACAGCA
 AATCCAATAGATCCGACTTTATCAGGCTGGCTCTGCTTCAGATTAGTGGGCGGACAGAATATCAAGC
 TACACATGGCTCCAGGTTACGAAGAACCAGCACCTTTGAGAGGAAGCCTAGTAAACGTTATCCATCCCGG
 AGACATTAACGTTCAAAGCAAGCAACCCAGTGATAGCAGCCAGCTCTGCTCTAAAAACAAATCCAGAAG
 TCCATAATTACCAGCCTCAATATCATCCTAATATCCATCCAGCCAGCCCGGTGGCATCCTCACTCTCC
 AAATGTCAGTACCCGCTCCCTTCCCGAGTGTAGCAGCTCGGACCGGTTGCCTTTTGGCATTGAGGAG
 AATGGGGGCACACCGTTCCTCACCAGCTTCAGGAAGGCATCACCACCAGCACCAGCATCAGCATCAGC
 ACCAGCACCCTCAAACACAGCCTCTCACTGACCCTGGAGAACAAGAGGGGCTCTGAGGTCCCCAAA
 CTCCAGCAGCAAGTCCCTTACAAAACAGTCCAGGAACACCTGCCTTGTTCAGTGAAGCCGCTGCCCAT
 CTAAGAAGCTGGAACCTGGAACCTGTGAAGGCTGTGGACCCTGGCCTCCTCTGCACATCAACATAAACA
 AGGCTGAAGAAAAGAAAGTCTCGGAGAAAACCTTTCAGACTCCACTTTTGCCTTCCCTGTTCGGATCA
 TGTGAAGTGAACATTCTGAAAGCCAGTTGAAAATGCTTCCCGAGTGAACATCCAGGGTGGAAAGGAG
 GAATCACCGTTTGTAAATATCAATAAGAAATCCAGTCTTCAGGACGCTAGTGAAGAAGTCTATTCCTA
 TTCGTGTGAAACTGCCAGCCAGCTGTGGAAAAGCCGAAATCAAGCCTCCCGAGTGAAGGAAATTAAC
 AAGACAGTATAGTTTTGATGAAGACGACCTCCCTCCAGACTGGCCGAGGCGAGTGGGAGTGACCACATCT
 ACAACCACAAACACCACAACGGCCGCCACAAAGTCTCCGTGCCGCTGCCGTCCCCAAGGTCCAGAATG
 TCAGCTCGCCTCACAAGTCAGAAGGCAAGGCCCTGCTGTCCCTGGGGCAAGAGCCCTCTGACCAGG
 AGGTGCCTTACCCTGGAGCCGGGTGATCTTCTGATGGATTTACAGAAGCCACTCCTCTGGCAGAGCC
 GCCAGCAACCCCACTGTGCCACTCTCGCTGTTCTCCTCCACTCTCTCCCCATGAAGGAAGAGACCA
 CTGGAGTTTGCATGTACCCTCCAATCAAAACGAGGCTGATAAAAAACATTCGCGTTGATACAATGAACCC
 GTTTCCTGATACTTTACCACAGGGCCACAGTTTACTGCAGACTTCAGAGACAGTAAATTACAGTGTGT
 CCTGGCCGACTTCCCGCTGATCCAGCAGCGACCCTGAGGCCTTTGACAGAGACCGTCTCCACAGTGC
 AGACATTTACACCACCCGAAACCTGTTTCTCTGGCAGCCAGTGCAGAGACTCCGGCAGGAACTGGA
 GAGAGAGAAGATGATGAAAAGACTGTTGATGACCGAACTG

ACGCGTACGCGGCCGCTCGAGCAGAACTCATCTCAGAAGAGGATCTGGCAGCAAATGATATCTGGATT
 ACAAGGATGACGACGATAAGGTTTAA

Protein Sequence: >RC212424 representing NM_019114
 Red=Cloning site Green=Tags(s)

MLRFLRRTFGRRSMQRYARGAAGRGAAGLGDERDGGPRGGPAAAASSSALPAAPGGSVFPAGGGPLL TGG
 AAVHISAAGAATLYCRVFLLDGTEVSVLDPKHAKGQDLFDQIVYHLDLVETDYFGLQFLDSAQVAHWL
 DHAKPIKKQMKIGPAYALHFRVKYYSSEPNNLREEFTRYL FVLQLRHDILSGKLCOPYETAVELAALCLQ
 AELGECELPETHPELVSEFRFIPNQTEAMEFDIFQRWKECRGKSPAQAELSYLNKAKWLEMYGVDMMHVVR
 GRDGCESLGLTPTGILIFEGANKIGLFFWPKITKMDFKKSKLTLVVVEDDDQGREQHTFVFRLDSART
 CKHLWKCAVEHHAFFRLRTPGNSKSNRSDFIRLGSFRFSGRTEYQATHGSRLRRTSTFERKPSKRYPSR
 RHSTFKASNPVIAAQLCSKTNPVHNYQPQYHPNIHPSQPRWHPHSPNVSYPLPSPVLSSSDRLPFGIEE
 NGGTPFLTAASGRHHHQHQHQHQHHSNYSLSLTLENKEGPLRSPNSSSKSLTKLSPGTPALFSEAAAH
 LKLELETVKAAGPWPLHININKAEKKVSEKTLQTPLLSPVADHVKCNILKAQLENASRVNIQGGKE
 ESPFVNINKSSSLQDASVRSPPIRVETAQPAVEKPEIKPPRVKLRQYSFDEDDLPPDLAEAVGVTTS
 TTTNTTTAATQVSVPLSPKVQNVSSPHKSEGKLLSPGAKSPDRGGAFLEPGDLLMDFTEATPLAEP
 ASNPCHAHSRCSPLSLPMKEETGVCMPPIKTRLIKTFPVDTMNPFDFTTGPOFTADFRDSKLQCC
 PGPTSPLIPAATLRPLTETVSTVQTIYTRKPVSLAASAETLRQELEREKMMKRLLMTEL

TRTRPLEQKLISEEDLAANDILDYKDDDDKV

Restriction Sites:

SgfI-MluI

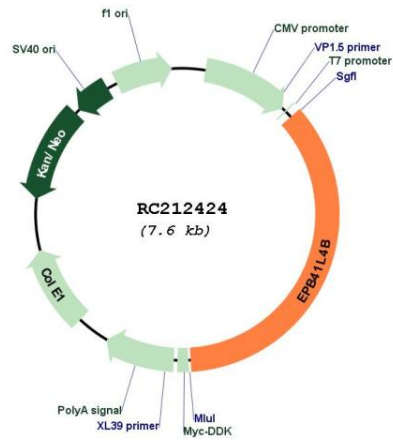
Cloning Scheme:



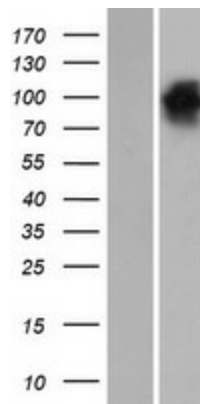
ACCN: NM_019114

ORF Size:	2700 bp
OTI Disclaimer:	The molecular sequence of this clone aligns with the gene accession number as a point of reference only. However, individual transcript sequences of the same gene can differ through naturally occurring variations (e.g. polymorphisms), each with its own valid existence. This clone is substantially in agreement with the reference, but a complete review of all prevailing variants is recommended prior to use. More info
OTI Annotation:	This clone was engineered to express the complete ORF with an expression tag. Expression varies depending on the nature of the gene.
Components:	The ORF clone is ion-exchange column purified and shipped in a 2D barcoded Matrix tube containing 10ug of transfection-ready, dried plasmid DNA (reconstitute with 100 ul of water).
Reconstitution Method:	<ol style="list-style-type: none">1. Centrifuge at 5,000xg for 5min.2. Carefully open the tube and add 100ul of sterile water to dissolve the DNA.3. Close the tube and incubate for 10 minutes at room temperature.4. Briefly vortex the tube and then do a quick spin (less than 5000xg) to concentrate the liquid at the bottom.5. Store the suspended plasmid at -20°C. The DNA is stable for at least one year from date of shipping when stored at -20°C.
RefSeq:	NM_019114.4 , NP_061987.3
RefSeq Size:	5814 bp
RefSeq ORF:	2703 bp
Locus ID:	54566
UniProt ID:	Q9H329
Cytogenetics:	9q31.3
Domains:	B41
MW:	99.7 kDa
Gene Summary:	Up-regulates the activity of the Rho guanine nucleotide exchange factor ARHGEF18 (By similarity). Involved in the regulation of the circumferential actomyosin belt in epithelial cells (PubMed:22006950). Promotes cellular adhesion, migration and motility in vitro and may play a role in wound healing (PubMed:23664528). May have a role in mediating cytoskeletal changes associated with steroid-induced cell differentiation (PubMed:14521927). [UniProtKB/Swiss-Prot Function]

Product images:



Circular map for RC212424



Western blot validation of overexpression lysate (Cat# [LY412741]) using anti-DDK antibody (Cat# [TA50011-100]). Left: Cell lysates from untransfected HEK293T cells; Right: Cell lysates from HEK293T cells transfected with RC212424 using transfection reagent MegaTran 2.0 (Cat# [TT210002]).