

Product datasheet for RC212423

CRYGN (NM_144727) Human Tagged ORF Clone

Product data:

Product Type: Expression Plasmids
Product Name: CRYGN (NM_144727) Human Tagged ORF Clone
Tag: Myc-DDK
Symbol: CRYGN
Mammalian Cell Selection: Neomycin
Vector: pCMV6-Entry (PS100001)
E. coli Selection: Kanamycin (25 ug/mL)
ORF Nucleotide Sequence: >RC212423 ORF sequence
Red=Cloning site Blue=ORF Green=Tags(s)

TTTTGTAATACGACTCACTATAGGGCGGCCGGAATTCGTCGACTGGATCCGGTACCGAGGAGATCTGCC
GCC**CGATCGCC**

ATGGCGCAGCGCTCGGGGAAGATCACTCTCTATGAAGGCAAGCACTTCACAGGGCAGAAGCTGGAGGTCT
TCGGGGACTGTGACAACCTCCAGGACCGGGGCTTATGAACCGAGTGAATCCATCCACGTGGAGAGCGG
AGCCTGGTCTGCTTCAATCACCCGACTTCCGGGGCCAGCAGTTCATCTGGAGCACGGCGACTACCCC
GACTTCTCCGCTGGAACAGCCACAGTGACCACATGGGCTCCTGTCGGCCTGTAGGAATGCACGGAGAAC
ATTTCCGCTAGAAATCTTCGAGGTTGCAACTTCACGGGCCAGTGCCTGGAGTTCCTGGAGACAGCCC
CTTCTCCAGAGCAGGGGCTGGGTCAAGAACTGTGTGAACACCATCAAGGTGTACGGGGACGGAGCAGCA
TGGAGCCCTAGAAGCTTCGGAGCTGAGGACTTCCAGCTGAGCAGCTCTTCAATCAGATCAAGGACCGG
AAGAGGCCACCACAAAACCAGCAACAACCCAGCCACCTTCTGACTGCAAACCTC

ACGCGTACGCGGCCGCTCGAGCAGAAACTCATCTCAGAAGAGGATCTGGCAGCAATGATATCCTGGATT
ACAAGGATGACGACGATAAGGTTTAA

Protein Sequence: >RC212423 protein sequence
Red=Cloning site Green=Tags(s)

MAQRSGKITLYEGKHFTGQKLEVFGDNDNFQDRGFMNRVNSIHVESGAWVCFNHPDFRGGQFFILEHGDYP
DFFRWNSHSDHMGSCRYPVGMHGEHFRLEIFEGCNFTGQCLEFLEDSPFLQSRGWKNCVNTIKVYGDGAA
WSPRSFGAEDFQLSSSLQSDQGPEEATTKPATTQPPFLTANL

TRTRPLEQKLISEEDLAANDILDYKDDDDKV

Chromatograms: https://cdn.origene.com/chromatograms/mk6450_b10.zip

Restriction Sites: Sgfl-Mlul



[View online >](#)

Cloning Scheme:


ACCN: NM_144727

ORF Size: 546 bp

OTI Disclaimer: The molecular sequence of this clone aligns with the gene accession number as a point of reference only. However, individual transcript sequences of the same gene can differ through naturally occurring variations (e.g. polymorphisms), each with its own valid existence. This clone is substantially in agreement with the reference, but a complete review of all prevailing variants is recommended prior to use. [More info](#)

OTI Annotation: This clone was engineered to express the complete ORF with an expression tag. Expression varies depending on the nature of the gene.

Components: The ORF clone is ion-exchange column purified and shipped in a 2D barcoded Matrix tube containing 10ug of transfection-ready, dried plasmid DNA (reconstitute with 100 ul of water).

- Reconstitution Method:**
1. Centrifuge at 5,000xg for 5min.
 2. Carefully open the tube and add 100ul of sterile water to dissolve the DNA.
 3. Close the tube and incubate for 10 minutes at room temperature.
 4. Briefly vortex the tube and then do a quick spin (less than 5000xg) to concentrate the liquid at the bottom.
 5. Store the suspended plasmid at -20°C. The DNA is stable for at least one year from date of shipping when stored at -20°C.

RefSeq: [NM_144727.3](#)

RefSeq Size: 746 bp

RefSeq ORF: 549 bp

Locus ID: 155051

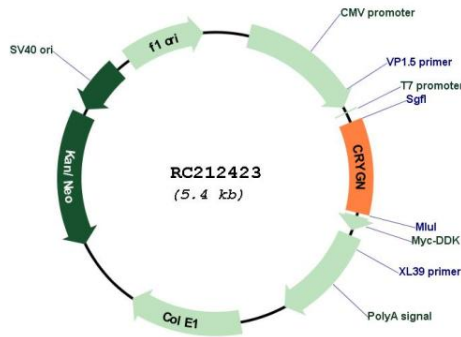
UniProt ID: [Q8WXF5](#)

Cytogenetics: 7q36.1

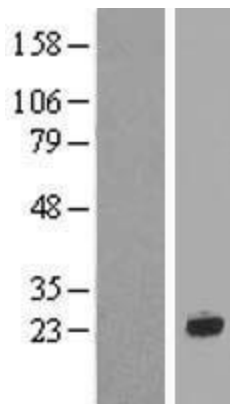
MW: 20.6 kDa

Gene Summary: This gene encodes a member of the crystallin family of proteins that are localized to the refractive structure of vertebrate eye lenses. The protein encoded by this gene is unique in that it has both beta and gamma crystallin protein motifs. Alternative splicing of this gene results in multiple transcript variants. [provided by RefSeq, Apr 2015]

Product images:



Circular map for RC212423



Western blot validation of overexpression lysate (Cat# [LY408155]) using anti-DDK antibody (Cat# [TA50011-100]). Left: Cell lysates from untransfected HEK293T cells; Right: Cell lysates from HEK293T cells transfected with RC212423 using transfection reagent MegaTran 2.0 (Cat# [TT210002]).