

## Product datasheet for RC212422

### SERBP1 (NM\_001018069) Human Tagged ORF Clone

#### Product data:

Product Type:	Expression Plasmids
Product Name:	SERBP1 (NM_001018069) Human Tagged ORF Clone
Tag:	Myc-DDK
Symbol:	SERBP1
Synonyms:	CGI-55; CHD3IP; HABP4L; PAI-RBP1; PAIRBP1
Mammalian Cell Selection:	Neomycin
Vector:	pCMV6-Entry (PS100001)
E. coli Selection:	Kanamycin (25 ug/mL)
ORF Nucleotide Sequence:	>RC212422 representing NM_001018069 Red=Cloning site Blue=ORF Green=Tags(s)

TTTTGTAATACGACTCACTATAGGGCGGCCGGAATTCGTCGACTGGATCCGGTACCGAGGAGATCTGCC  
GCC**CGATCGCC**

ATGCTGGGCACTTACAGGAAGGCTTCGGCTGCGTGGTACCAACCGATTGACAGTTATTTGACGACG  
AATCGGACCCCTTCGAGGTGCTGAAGGCAGCAGAGAACAAGAAAAAGAACCGCGGGGGCGGCTTGG  
GGGCCCTGGGGCAAGAGCGCAGCTCAGGCCGCGGCCAGACCAACTCCAACGCGGCAGGCAAACAGCTG  
CGCAAGGAGTCCCAGAAAGACCGCAAGAACCCGCTGCCCCAGCGTTGGCGTGGTTGACAAGAAAGAGG  
AGACGCAGCCGCCGTGGCGCTTAAGAAAGAAGGAATAAGACGAGTTGGAAGAAGACCTGATCAACAACT  
TCAGGGTGAAGGAAAATAATTGATAGAAGACCAGAAAGCGACCACCTCGTGAACGAAGATTGCAAAAAG  
CCAATTGAAGAAAAGGTGAAGGAGGCGAATTTTCAGTTGATAGACCGATTATTGACCGACCTATTGCGAG  
GTCGTGGTGGTCTTGAAGAGGTGAGGGGGCCGTGGACGTGGAATGGGCCGAGGAGATGGATTTGATTC  
TCGTGGCAAACGTGAATTTGATAGGCATAGTGAAGTGATAGATCTTCTTTTTCACATTACAGTGGCCTG  
AAGCAGGAGGACAAACGTGGAGGTAGCGGATCTCACAACCTGGGAACTGTCAAAGACGAATTAACCTGACT  
TGGATCAATCAAATGTGACTGAGGAAACACCTGAAGGTGAAGAACATCATCCAGTGGCAGACACTGAAAA  
TAAGGAGAATGAAGTTGAAGAGGTAAAAGAGGAGGGTCCAAAAGAGATGACTTTGGATGAGTGAAGGCT  
ATTCAAAATAAGGACCGGGCAAAGTGAATTTAATATCCGAAAACCAAATGAAGGTGCTGATGGGCACT  
GGAAGAAGGGATTTGTTCTTCATAAATCAAAGAGTGAAGAGGCTCATGCTGAAGATTGCGTTATGGACCA  
TCAATTTCCGGAAGCCAGCAAATGATATAACGTCTCAGCTGGAGATCAATTTGGAGACCTTGGCCGCCCA  
GGACGTGGCGGCAGGGGAGGACGAGGTGGACGTGGGCGTGGTGGGCGCCCAAACCGTGGCAGCAGGACCG  
ACAAGTCAAGTGCTTCTGCTCTGATGTGGATGACCCAGAGGCATTCCAGCTCTGGCT

**ACGCGT**ACGCGGCCGCTCGAGCAGAACTCATCTCAGAAGAGGATCTGGCAGCAAATGATATCCTGGATT  
ACAAGGATGACGACGATAAGGTTTAA



[View online >](#)

**Protein Sequence:** >RC212422 representing NM\_001018069  
Red=Cloning site Green=Tags(s)

MPGHLQEGFGCVVTRNFDQLFDDESDPFEVLKAAENKKKEAGGGGVGPGAKSAAQAAAQTNSNAAGKQL  
 RKESQKDRKNLPPSVGVVDKKEETQPPVALKKEGIRRVGRRPDQQLQEGEKIIDRRPERRPPRERRFEK  
 PLEEKGEGERFSVDRPIIDRPIRGRGGLGRGRGGRGMGRGDGFD SRGKREFDRHSGSDRSSFSHYSGL  
 KHEDKRGGSGSHNWGTVKDELTDLDQSNVTEETPEGEEHHPVADTENKENEVEEVKEEGPKEMTLDEWKA  
 IQNKDRAKVEFNIRKPNEGADGQWKGFVLHKSKEEAHAEDSMDHHRKPKANDITSQLIINFGLGRP  
 GRGGRGGRGGRGGRPNRGRSRTDKSSASAPDVEDDPEAFPALA

TRTRPLEQKLISEEDLAANDILDYKDDDDKV

**Chromatograms:** [https://cdn.origene.com/chromatograms/mk8056\\_g04.zip](https://cdn.origene.com/chromatograms/mk8056_g04.zip)

**Restriction Sites:** SgfI-MluI

**Cloning Scheme:**



**ACCN:** NM\_001018069

**ORF Size:** 1179 bp

**OTI Disclaimer:** The molecular sequence of this clone aligns with the gene accession number as a point of reference only. However, individual transcript sequences of the same gene can differ through naturally occurring variations (e.g. polymorphisms), each with its own valid existence. This clone is substantially in agreement with the reference, but a complete review of all prevailing variants is recommended prior to use. [More info](#)

**OTI Annotation:** This clone was engineered to express the complete ORF with an expression tag. Expression varies depending on the nature of the gene.

**Components:** The ORF clone is ion-exchange column purified and shipped in a 2D barcoded Matrix tube containing 10ug of transfection-ready, dried plasmid DNA (reconstitute with 100 ul of water).

**Reconstitution Method:**

1. Centrifuge at 5,000xg for 5min.
2. Carefully open the tube and add 100ul of sterile water to dissolve the DNA.
3. Close the tube and incubate for 10 minutes at room temperature.
4. Briefly vortex the tube and then do a quick spin (less than 5000xg) to concentrate the liquid at the bottom.
5. Store the suspended plasmid at -20°C. The DNA is stable for at least one year from date of shipping when stored at -20°C.

**RefSeq:** [NM\\_001018069.2](#)

**RefSeq Size:** 6719 bp

**RefSeq ORF:** 1182 bp

**Locus ID:** 26135

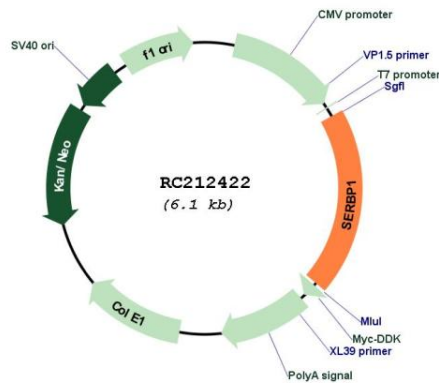
**UniProt ID:** [Q8NC51](#)

**Cytogenetics:** 1p31.3

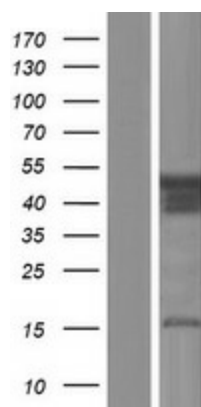
**MW:** 43 kDa

**Gene Summary:** May play a role in the regulation of mRNA stability. Binds to the 3'-most 134 nt of the SERPINE1/PAI1 mRNA, a region which confers cyclic nucleotide regulation of message decay. Seems to play a role in PML-nuclear bodies formation (PubMed:28695742).[UniProtKB/Swiss-Prot Function]

### Product images:



Circular map for RC212422



Western blot validation of overexpression lysate (Cat# [LY422720]) using anti-DDK antibody (Cat# [TA50011-100]). Left: Cell lysates from untransfected HEK293T cells; Right: Cell lysates from HEK293T cells transfected with RC212422 using transfection reagent MegaTran 2.0 (Cat# [TT210002]).