

## Product datasheet for **RC212421**

### **BTBD17 (NM\_001080466) Human Tagged ORF Clone**

#### **Product data:**

Product Type:	Expression Plasmids
Product Name:	BTBD17 (NM_001080466) Human Tagged ORF Clone
Tag:	Myc-DDK
Symbol:	BTBD17
Synonyms:	BTBD17A; LGALS3BPL; TANGO10A
Mammalian Cell Selection:	Neomycin
Vector:	pCMV6-Entry (PS100001)
E. coli Selection:	Kanamycin (25 ug/mL)



[View online »](#)

**ORF Nucleotide Sequence:**

>RC212421 representing NM\_001080466  
 Red=Cloning site Blue=ORF Green=Tags(s)

TTTTGTAATACGACTCACTATAGGGCGGCCGGAATTCGTCGACTGGATCCGGTACCGAGGAGATCTGCC  
 GCC**CGGATCGCC**

ATGCCTAGGAGAGGCTACTCCAAGCCTGGTCTCTGGGCAGCTTCTGGCCATGCTGACCTTGGTGGGCC  
 TGGTACCACATGCAGCACAGAGCCGATGTTGGCGGGGAGGCAGCTGGACCTCCATCAACCACTCCCA  
 GGCGGTGCTCCAGCGCTTGCAGGAGCTGCTGCGGCAGGGCAACGCCAGCGATGTGGTTCTGCGGGTGCAG  
 GCTGCGGGCACCGATGAGGTCCGGGATTTCCACGCCACCAGCCTGCTGCTGGGACTGCACAGTGAGCTGT  
 TCCTGGAGCTGCTAAGTAACAGAGCGAGGCGGTGCTGCAGGAGCCACAGGACTGCGCCGCTGTCTTCGA  
 CAAGTTCATCAGGTACCTGTACTGCGGGGAGTGACCGTGTGCTGACCCAGGCCATCCCCTGCACAGA  
 CTGGCCACCAAGTACGGCGTGTCTCCCTGCAGCGCGCGTGGCCGACTACATGCGCGCGCACCTGGCGG  
 GAGGCGCGGGCCCGCGGTGGGCTGGTACCACTACGCGGTGGCACCGGGGACGAGGCCCTGCGCGAGAG  
 CTGCCTGCAGTTCCTGGCTGGAACCTGTGCGCGTGGCGGCCAGCACCGAGTGGGGCGCGGTGAGCCCC  
 GAGCTGCTCTGGCAGCTCCTGCAACGCTCGGACCTGGTGTGTCAGGATGAACTGGAGCTGTTCCACGCGC  
 TGGAGGCTGGT  
 CCCCATGATCCCACCGGCACAGCTGTTCCAGCTGCAGGCGCGCTCGGCAGCCCTGGCGCGCCACGGCCCC  
 GCGGTGGCCGACCTCCTGCTGCAGGCCTACCAGTTCACGCCGCGTGGCGCTGCACTACGCCAAGTTCT  
 TCGACGTCAACGGCAGCGCTTCTGCCCGCAACTACCTCGCGCCGCTGGGGCGCCCGTGGGTCAT  
 CAACAACCGGCCCGCGACGACCGCAGCACCAGCTTCCAGACGACGCTGGGCCGAGTGGCCACGACGCG  
 GGCCCGCGGGTACCTGGAACGTGCTCTTCTCGCCGCGTGGCTGCCCGTCACTGCGGCCCGTTTACG  
 CGGACCGCGGGCACTGCTCTGCCCGCGCGCCCGGAGGACGGCCGACCGCGCGTGGTGGTGGTGGTGGT  
 GGCCAGCAGCGGGCGCGACGCGCGCGCGTGGCTTCCAGAAGACGGTGTGTTGGGGGCGCGCCAGCAG  
 GGCCGCTGCTGGTCCGCCACGCTACAGCTTCCACCAGAGCAGCAGGAGGCGCGGACTTCTGGCGC  
 ACGCCGACCTGCAGCGCGCAACTCCGAGTACCTGGTTGAGAAGCCCTGCACCTGCACCTCATCGTCAA  
 GCCCGTATACCACACCCTTATCCGGACCCCAAG

**ACGCGT**ACGCGGGCGCTCGAGCAGAACTCATCTCAGAAGAGGATCTGGCAGCAATGATATCCTGGATT  
 ACAAGGATGACGACGATAAGGTTTAA

**Protein Sequence:**

>RC212421 representing NM\_001080466  
 Red=Cloning site Green=Tags(s)

MPRRGYSKPGSWGSFWAMLTLVGLVTHAAQRADVGGEEAAGTSSINHSQAVLQRLQELLRQGNASDVLRVQ  
 AAGTDEVRFVFAHRLLLGLHSELFLELLSNQSEAVLQEPQDCAAVFDKFI RYL YCGELTVLLTQAIPLHR  
 LATKYGVSSLRGVADYMRAGLAGGAGPAVGWYHYAVGTGDEALRESCLQFLAWNLSAVAASTEWEAVSP  
 ELLWQLLQRSDLVLQDELELFHAEAWLGRARPPPAVAERALRAIRYPMIPPAQLFQLQARSAALARHGP  
 AVADLLLQAYQFHAASPLHYAKFFDVNGSAFLPRNYLAPAWGAPWVNNPARDDRSTSFQTLGPGSGHDA  
 GRRVTWNVLFSPRWLPVSLRPVYADAAGTALPAARPEGRPRLVVTPASSGGDAAGVSFQKTVLVGARQQ  
 GRLLVRHAYSFHQSSEEAGDFLAHADLQRRNSEYLVENALHLHLIVKPVYHTLIRTPK

**TR**TRPLEQKLI SEEDLAANDILDYKDDDDKV

**Chromatograms:**

[https://cdn.origene.com/chromatograms/mk8023\\_e01.zip](https://cdn.origene.com/chromatograms/mk8023_e01.zip)

**Restriction Sites:**

Sgfl-MluI

**Cloning Scheme:**


**ACCN:** NM\_001080466

**ORF Size:** 1434 bp

**OTI Disclaimer:** The molecular sequence of this clone aligns with the gene accession number as a point of reference only. However, individual transcript sequences of the same gene can differ through naturally occurring variations (e.g. polymorphisms), each with its own valid existence. This clone is substantially in agreement with the reference, but a complete review of all prevailing variants is recommended prior to use. [More info](#)

**OTI Annotation:** This clone was engineered to express the complete ORF with an expression tag. Expression varies depending on the nature of the gene.

**Components:** The ORF clone is ion-exchange column purified and shipped in a 2D barcoded Matrix tube containing 10ug of transfection-ready, dried plasmid DNA (reconstitute with 100 ul of water).

**Reconstitution Method:**

1. Centrifuge at 5,000xg for 5min.
2. Carefully open the tube and add 100ul of sterile water to dissolve the DNA.
3. Close the tube and incubate for 10 minutes at room temperature.
4. Briefly vortex the tube and then do a quick spin (less than 5000xg) to concentrate the liquid at the bottom.
5. Store the suspended plasmid at -20°C. The DNA is stable for at least one year from date of shipping when stored at -20°C.

**RefSeq:** [NM\\_001080466.2](#)

**RefSeq Size:** 1678 bp

**RefSeq ORF:** 1437 bp

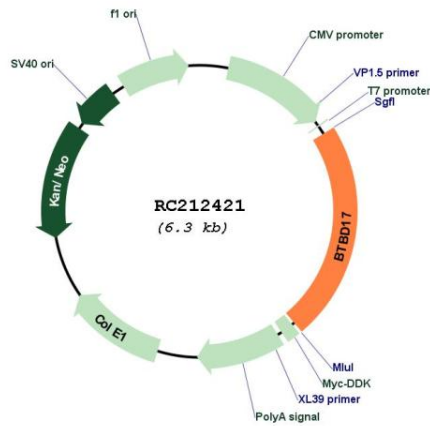
**Locus ID:** 388419

**UniProt ID:** [A6NE02](#)

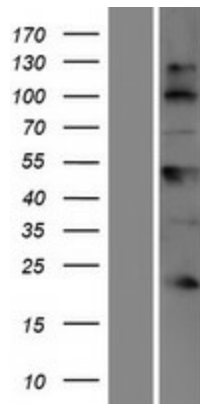
**Cytogenetics:** 17q25.1

MW: 52.3 kDa

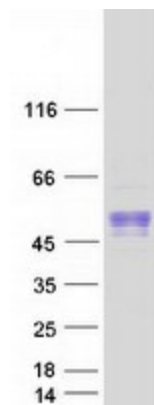
**Product images:**



Circular map for RC212421



Western blot validation of overexpression lysate (Cat# [LY420723]) using anti-DDK antibody (Cat# [TA50011-100]). Left: Cell lysates from untransfected HEK293T cells; Right: Cell lysates from HEK293T cells transfected with RC212421 using transfection reagent MegaTran 2.0 (Cat# [TT210002]).



Coomassie blue staining of purified BTBD17 protein (Cat# [TP312421]). The protein was produced from HEK293T cells transfected with BTBD17 cDNA clone (Cat# RC212421) using MegaTran 2.0 (Cat# [TT210002]).