

Product datasheet for RC212417

PRR19 (NM_199285) Human Tagged ORF Clone

Product data:

Product Type:	Expression Plasmids
Product Name:	PRR19 (NM_199285) Human Tagged ORF Clone
Tag:	Myc-DDK
Symbol:	PRR19
Mammalian Cell Selection:	Neomycin
Vector:	pCMV6-Entry (PS100001)
E. coli Selection:	Kanamycin (25 ug/mL)
ORF Nucleotide Sequence:	>RC212417 representing NM_199285 Red=Cloning site Blue=ORF Green=Tags(s)

TTTTGTAATACGACTCACTATAGGGCGGCCGGGAATTCGTCGACTGGATCCGGTACCGAGGAGATCTGCCGCCCGATCGCC

ATGGATACCCAGGGACCAGTCTCCAGCCTTTTCAGCAGCCTGAGAACTGGTCGTGTCGGTCGTGCGGA
AGACTAGGCGGGAACGTAACAAGGCCCTGGTGGGCAGCCGCCGGCCATTAGCCCACCACGATCCTCCTGT
GGCCATTCCGGATCCACCTGTGGTCCCTACTGCCTCCAAGCTCGTGGTCATAACCCAGGGCCGGCTGAGC
CGGGAGCACCGGGTCTTTCAACCACGAGGTGAAATCCCTAGATGTTGCAAGGCTGCTTAGCAGTGGGA
CCCTGGTGCCAGGCAGCCACACTCCCCGCCAAGCCCTCCCCAAGCCAGGCAGGCCCCAGGAACCAGC
CCCACGGTCCAGGACAAGAGAACCAGGTGCCTGGAGGTTCCGGGCCAGGCCACCCAGTTCCTCCAGAG
TTGTCTGGCGTGGGCAGCTGCTGGCAGAGCTGCAGTGTGAGTTCGACAGGCCTTCCCCCGGA
GGAACCTGATTCAGGATGCCAGGGATGCCATCGTGCACACCTTGACAGCCTGTCATGGTTGTGTCCTGA
CCTTGCCCTGGTCTTCGGGGCTGCCAGCCACCCTTGCCAGGGGCCAAGCCTGGGGTCTCTGAGAGAAA
ATGACACCCTTCTGGATTAATAGCCCTGATCAAGTCCCAGAGCAGGAGAGGCAAAGGAAGCAACAAGGGA
CAAAGGAGTTCACCTTCCCATGCCCTACACCTCCAGCATGCCACTGCGCACAGGGGGAGTCTGGCACC
GCCAAGAGGTCCCTGGCCACCATACTTTCCCTCACTGTCTTCGCCATCTGGAACAGCCTGGGGTCCCCCA
ACAGCGTTTGACTTGTTAAAAAGCATCTGGCTGGTAGCCAGCCACCCCTCCTCGGCCCTGGGGGTTG
GCCTCCCTCAGCCCTGCCTCAGCCTTCATCACCCCTGTTGCCCGAACCTCTGTCTGGACTGGAGCCC
CAGCCCCCTTCCCCTGCCCAGCCTCTCCTGGGTAGTAGCCAGAGCAGTCCGGAAGCCTGGTCTTTT
CCACCCATGAGACTGTAC

ACGCGTACGCGGCCGCTCGAGCAGAACTCATCTCAGAAGAGGATCTGGCAGCAAATGATATCCTGGATT
ACAAGGATGACGACGATAAGGTTTAA



[View online »](#)

Protein Sequence: >RC212417 representing NM_199285
 Red=Cloning site Green=Tags(s)

MDTQGPVSQPFQQPEKPGRVRRRKRTRRERNKALVGSRRPLAHHDPVVAIRDPPVVPTASKLVVITQGRLS
 REHRGLFNHEVKS LDVARLLSSGTLVPGSPTLPAPKSPSPGRAQEPAPRSRDKENQVPGGSGPSPSSPE
 LSGVGQLLAELQCQLSLPQAFPRRNLIQDARDAIVHTLQACHGCVPDALVLRGCQPPLPGAKPGVSEK
 MTPFWINSPDQVPEQERQRKQQTKEFTFPMPTSSMPTAHRGSLAPPRGPWPPYFPSLSSPSGTAWGPP
 TAFDLLKSIWLVA T P P P P R P W G V L P Q L P Q P S S P L L P R T S V L D W S P S P P S P L P S L S W V V A Q S S P E A W S F
 PPMRLY

TRTRPLEQKLISEEDLAANDILDYKDDDDKV

Chromatograms: https://cdn.origene.com/chromatograms/mk8023_e03.zip

Restriction Sites: SgfI-MluI

Cloning Scheme:

Cloning sites used for ORF Shuttling:



* The last codon before the Stop codon of the ORF

ACCN: NM_199285

ORF Size: 1068 bp

OTI Disclaimer: The molecular sequence of this clone aligns with the gene accession number as a point of reference only. However, individual transcript sequences of the same gene can differ through naturally occurring variations (e.g. polymorphisms), each with its own valid existence. This clone is substantially in agreement with the reference, but a complete review of all prevailing variants is recommended prior to use. [More info](#)

OTI Annotation: This clone was engineered to express the complete ORF with an expression tag. Expression varies depending on the nature of the gene.

Components: The ORF clone is ion-exchange column purified and shipped in a 2D barcoded Matrix tube containing 10ug of transfection-ready, dried plasmid DNA (reconstitute with 100 ul of water).

- Reconstitution Method:**
1. Centrifuge at 5,000xg for 5min.
 2. Carefully open the tube and add 100ul of sterile water to dissolve the DNA.
 3. Close the tube and incubate for 10 minutes at room temperature.
 4. Briefly vortex the tube and then do a quick spin (less than 5000xg) to concentrate the liquid at the bottom.
 5. Store the suspended plasmid at -20°C. The DNA is stable for at least one year from date of shipping when stored at -20°C.

RefSeq: [NM_199285.2](#), [NP_954979.2](#)

RefSeq Size: 1532 bp

RefSeq ORF: 1071 bp

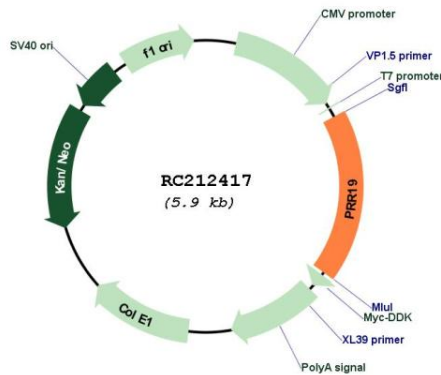
Locus ID: 284338

UniProt ID: [A6NJB7](#)

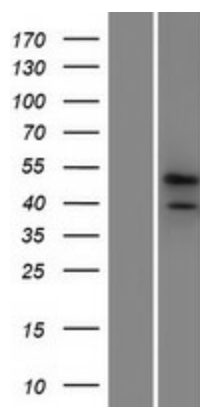
Cytogenetics: 19q13.2

MW: 38.5 kDa

Product images:



Circular map for RC212417



Western blot validation of overexpression lysate (Cat# [LY404606]) using anti-DDK antibody (Cat# [TA50011-100]). Left: Cell lysates from untransfected HEK293T cells; Right: Cell lysates from HEK293T cells transfected with RC212417 using transfection reagent MegaTran 2.0 (Cat# [TT210002]).