

Product datasheet for RC212415

DUX3 (NM_012148) Human Tagged ORF Clone

Product data:

Product Type: Expression Plasmids
Product Name: DUX3 (NM_012148) Human Tagged ORF Clone
Tag: Myc-DDK
Symbol: DUX3
Synonyms: double homeobox, 3
Mammalian Cell Selection: Neomycin
Vector: pCMV6-Entry (PS100001)
E. coli Selection: Kanamycin (25 ug/mL)
ORF Nucleotide Sequence: >RC212415 representing NM_012148
 Red=Cloning site Blue=ORF Green=Tags(s)

TTTTGTAATACGACTCACTATAGGGCGGCCGGAATTCGTCGACTGGATCCGGTACCGAGGAGATCTGCC
GCC**CGATCGCC**

ATGCCGGCTGAGGTGCACGGGAGCCCGCCGCCTCTCTGCCCCGTCCGTCCGTGAAATTCGGCCGG
GGCTCCCTGCGATGGCCCTCCTGACAGCTTTGGACGACACCTCCCCGAGGAAGCCAGGGACCGGGAAG
GCGAATGATACTCTTTGACCCCGAGTCAAAGCGATGCCCTGCGAGCCTGCTTTGAGCGGAACCTGTAC
CCGGGCATTGCCACAAAGAACAGCTGGCCAGGGCATCGACATTCGGAGCCCAGGGTCCAGATTTGGT
TTCAGAAATGAGAGATCATGCCAGTTGAGGCAGCACCGGCGCAATCTCGGCCCTGGCCGGGAGACGCGA
CCCGCAAAAAGGCAGACGAAAGCGGACTGCCATCACCGGATCCCAAACCGCCTGCTCCTCCGAGCCTTT
GAGAAGGATCGCTTTCCAGGCATTCTGCCAGGGAAGAGCTGGCCAGAGAGACGGCCTCCCGGAGTCCA
GGATTCAGCTCTGGTTTCAGAAATCGAAGAGCCAGGCACTGGGACAGTCTGGCAGGGCGCCACGCAAGC
AAGCATCCGGTGCAATGCAGCCCAATTGGG

ACGCGTACGCGGCCGCTCGAGCAGAACTCATCTCAGAAGAGGATCTGGCAGCAATGATATCCTGGATT
ACAAGGATGACGACGATAAGGTTTAA

Protein Sequence: >RC212415 representing NM_012148
 Red=Cloning site Green=Tags(s)

MPAEVHGSPASLPCPSVKFRPGLPAMALLTALDDTLPEEAQGPGRMILLSTPSQSDALRACFERNL
PGIATKEQLAQGIDIPEPRVQIWFQNERSCQLRQHRQSRPWPGRRDPOKGRKRRTAITGSQTALLLRAF
EKDRFPGIPAREELARETGLPESRIQLWFQNRARRHWGQSGRAPTQASIRCNAAPIG

TRTRPLEQKLISEEDLAANDILDYKDDDDKV

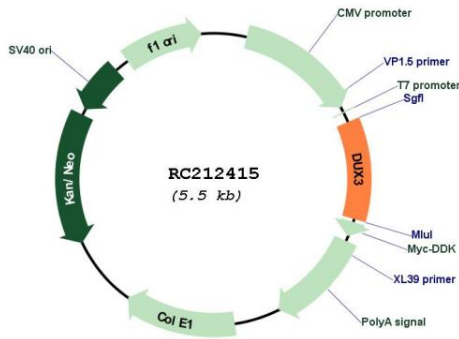


[View online »](#)

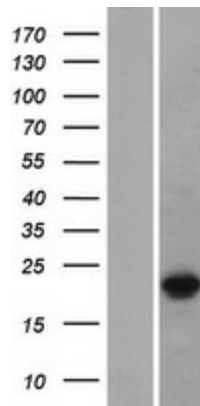
MW: 21.9 kDa

Gene Summary: The human genome contains hundreds of repeats of the 3.3-kb family in regions associated with heterochromatin. The DUX gene family, including DUX3, resides within these 3.3-kb repeated elements (Beckers et al., 2001 [PubMed 11245978]). See DUX4 (MIM 606009). [supplied by OMIM, Mar 2008]

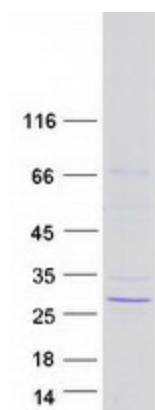
Product images:



Circular map for RC212415



Western blot validation of overexpression lysate (Cat# [LY415935]) using anti-DDK antibody (Cat# [TA50011-100]). Left: Cell lysates from untransfected HEK293T cells; Right: Cell lysates from HEK293T cells transfected with RC212415 using transfection reagent MegaTran 2.0 (Cat# [TT210002]).



Coomassie blue staining of purified DUX3 protein (Cat# [TP312415]). The protein was produced from HEK293T cells transfected with DUX3 cDNA clone (Cat# RC212415) using MegaTran 2.0 (Cat# [TT210002]).