

## Product datasheet for **RC212401**

### CDRT15 (NM\_001007530) Human Tagged ORF Clone

#### Product data:

**Product Type:** Expression Plasmids  
**Product Name:** CDRT15 (NM\_001007530) Human Tagged ORF Clone  
**Tag:** Myc-DDK  
**Symbol:** CDRT15  
**Mammalian Cell Selection:** Neomycin  
**Vector:** pCMV6-Entry (PS100001)  
**E. coli Selection:** Kanamycin (25 ug/mL)  
**ORF Nucleotide Sequence:** >RC212401 representing NM\_001007530  
Red=Cloning site Blue=ORF Green=Tags(s)

TTTTGTAATACGACTCACTATAGGGCGGCCGGAATTCGTCGACTGGATCCGGTACCGAGGAGATCTGCC  
GCC**CGATCGCC**

ATGTTCTCGTGTGCTTCCCCACTTCGAGAGGTTGCTGCTTCAGGAATGGAGGGAGTGAGAGCCTTTTCC  
GACGATGCCGAAGAAGGCTCATCCCTCACCCAGACGCTGTGCGCCGTTGTAATAAGGCGCATCCAGGT  
ACCACAGGACAGCCTGGGGCAGGCCCTAGCAGGCCAGGCCACACCAGAGATCCCATTGGGGCTGCAGCTG  
CACACTGTCCTTGTCCAGGAGATTCAGGAGCTCATTGAGGCACAGACACTTGCTCCTGGTCCATGTGCAG  
AAGTAAGAGCACTGCCAGCACCGCGGGAGCCAGAGCCAGCATGGGAAGAGGCCCTCCAGAGAGAGC  
ACTGGAGCTGGAGGGAGCTCCAGCCAAGGACCAGACCAACGAGGAGCTGCCTGAAATCACGGAGGTGCCG  
GAGAGCATTAAAAGAAGGCTGGGAAGAAGATTCCAGCAGCTACGCTGCTCCCAGAGGCAACCTCCTCC  
TCCAGGCATGGATGCGGGTCCACAGCTGGGCATCCAGGCTGTTTGCCCTAATGTGCTGCCCGGGACAGG  
CCCT

**ACGCGT**ACGCGGCCGCTCGAGCAGAACTCATCTCAGAAGAGGATCTGGCAGCAATGATATCCTGGATT  
ACAAGGATGACGACGATAAGGTTTAA

**Protein Sequence:** >RC212401 representing NM\_001007530  
Red=Cloning site Green=Tags(s)

MFSCCFPTSRGCCFRNGGSESLFRRRRLIPHRRLSPVVIRRIQVPQDSLQALAGQATPEIPLGLQL  
HTVLVQEIQELIEAQTLPGPCAEVRALPAPAAEPEPAWEEAPPERALELEGAPAKDQTNEELPEITEVP  
ESIKRRLGRRVPAATPAPRGNLLLQAWMRVHSWASRLFAPNVLPGTGP

**TR**TRPLEQKLISEEDLAANDILDYKDDDDKV

**Chromatograms:** [https://cdn.origene.com/chromatograms/mk8023\\_e06.zip](https://cdn.origene.com/chromatograms/mk8023_e06.zip)



[View online »](#)

**Restriction Sites:** SgfI-MluI

**Cloning Scheme:**



**ACCN:** NM\_001007530

**ORF Size:** 564 bp

**OTI Disclaimer:** The molecular sequence of this clone aligns with the gene accession number as a point of reference only. However, individual transcript sequences of the same gene can differ through naturally occurring variations (e.g. polymorphisms), each with its own valid existence. This clone is substantially in agreement with the reference, but a complete review of all prevailing variants is recommended prior to use. [More info](#)

**OTI Annotation:** This clone was engineered to express the complete ORF with an expression tag. Expression varies depending on the nature of the gene.

**Components:** The ORF clone is ion-exchange column purified and shipped in a 2D barcoded Matrix tube containing 10ug of transfection-ready, dried plasmid DNA (reconstitute with 100 ul of water).

- Reconstitution Method:**
1. Centrifuge at 5,000xg for 5min.
  2. Carefully open the tube and add 100ul of sterile water to dissolve the DNA.
  3. Close the tube and incubate for 10 minutes at room temperature.
  4. Briefly vortex the tube and then do a quick spin (less than 5000xg) to concentrate the liquid at the bottom.
  5. Store the suspended plasmid at -20°C. The DNA is stable for at least one year from date of shipping when stored at -20°C.

**RefSeq:** [NM\\_001007530.3](#)

**RefSeq Size:** 567 bp

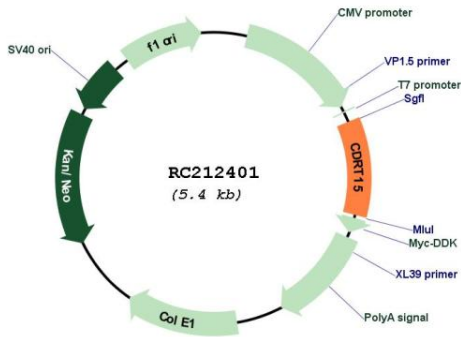
**RefSeq ORF:** 567 bp

**Locus ID:** 146822

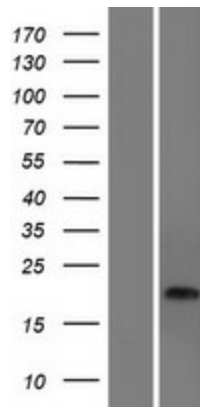
**UniProt ID:** [Q96T59](#)

Cytogenetics: 17p12  
 MW: 20.5 kDa

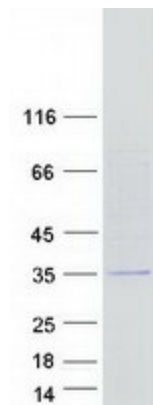
**Product images:**



Circular map for RC212401



Western blot validation of overexpression lysate (Cat# [LY423498]) using anti-DDK antibody (Cat# [TA50011-100]). Left: Cell lysates from untransfected HEK293T cells; Right: Cell lysates from HEK293T cells transfected with RC212401 using transfection reagent MegaTran 2.0 (Cat# [TT210002]).



Coomassie blue staining of purified CDRT15 protein (Cat# [TP312401]). The protein was produced from HEK293T cells transfected with CDRT15 cDNA clone (Cat# RC212401) using MegaTran 2.0 (Cat# [TT210002]).