

## Product datasheet for **RC212397**

### IL20 (NM\_018724) Human Tagged ORF Clone

#### Product data:

**Product Type:** Expression Plasmids  
**Product Name:** IL20 (NM\_018724) Human Tagged ORF Clone  
**Tag:** Myc-DDK  
**Symbol:** IL20  
**Synonyms:** IL-20; IL10D; ZCYTO10  
**Mammalian Cell Selection:** Neomycin  
**Vector:** pCMV6-Entry (PS100001)  
**E. coli Selection:** Kanamycin (25 ug/mL)  
**ORF Nucleotide Sequence:** >RC212397 ORF sequence  
Red=Cloning site Blue=ORF Green=Tags(s)

TTTTGTAATACGACTCACTATAGGGCGCCGGGAATTCGTCGACTGGATCCGGTACCGAGGAGATCTGCC  
GCC**CGATCGCC**

ATGAAAGCCTCTAGTCTTGCCTTCAGCCTTCTCTCTGCTGCGTTTTATCTCCTATGGACTCCTTCCACTG  
GACTGAAGACTCAATTTGGGAAGCTGTGTGATCGCCACAAACCTTCAGGAAATACGAAATGGATTTTC  
TGAGATACGGGGCAGTGTGCAAGCCAAAGATGAAACATTGACATCAGAATCTTAAGGAGGACTGAGTCT  
TTGCAAGACACAAAGCCTGCGAATCGATGCTGCCTCCTGCGCCATTTGCTAAGACTCTATCTGGACAGGG  
TATTTAAAACTACCAGACCCCTGACCATTATACTCTCCGGAAGATCAGCAGCCTCGCCAATTCCTTTCT  
TACCATCAAGAAGGACCTCCGGCTCTGTATGCCACATGACATGCCATTGTGGGAGGAAGCAATGAAG  
AAATACAGCCAGATTCTGAGTCACTTTGAAAAGCTGGAACCTCAGGCAGCAGTTGTGAAGCCTTTGGGG  
AACTAGACATTCTTCTGCAATGGATGGAGGAGACAGAA

**ACGCGT**ACGCGGCCGCTCGAGCAGAACTCATCTCAGAAGAGGATCTGGCAGCAAATGATATCCTGGATT  
ACAAGGATGACGACGATAAGGTTTAA

**Protein Sequence:** >RC212397 protein sequence  
Red=Cloning site Green=Tags(s)

MKASSLAFSLLSAFYLLWTPSTGLKTLNLGSCVIATNLQEIRNGFSEIRGSVQAKDGNIDIRILRRTES  
LQDTKPANRCCLLRHLLRLYLDRVFNKYQTPDHYTLRKISSLANSLTIKKDLRLCHAHMTCHCGEEAMK  
KYSQILSHFEKLEPQAAVVKALGELDILLQWMEETE

**TRTRPLEQKLISEEDLAANDILDYKDDDDKV**

**Chromatograms:** [https://cdn.origene.com/chromatograms/mk6463\\_b09.zip](https://cdn.origene.com/chromatograms/mk6463_b09.zip)



[View online »](#)

Restriction Sites: SgfI-MluI

Cloning Scheme:



ACCN: NM\_018724

ORF Size: 528 bp

OTI Disclaimer: The molecular sequence of this clone aligns with the gene accession number as a point of reference only. However, individual transcript sequences of the same gene can differ through naturally occurring variations (e.g. polymorphisms), each with its own valid existence. This clone is substantially in agreement with the reference, but a complete review of all prevailing variants is recommended prior to use. [More info](#)

OTI Annotation: This clone was engineered to express the complete ORF with an expression tag. Expression varies depending on the nature of the gene.

Components: The ORF clone is ion-exchange column purified and shipped in a 2D barcoded Matrix tube containing 10ug of transfection-ready, dried plasmid DNA (reconstitute with 100 ul of water).

Reconstitution Method:

1. Centrifuge at 5,000xg for 5min.
2. Carefully open the tube and add 100ul of sterile water to dissolve the DNA.
3. Close the tube and incubate for 10 minutes at room temperature.
4. Briefly vortex the tube and then do a quick spin (less than 5000xg) to concentrate the liquid at the bottom.
5. Store the suspended plasmid at -20°C. The DNA is stable for at least one year from date of shipping when stored at -20°C.

RefSeq: [NM\\_018724.3](#), [NP\\_061194.2](#)

RefSeq Size: 1252 bp

RefSeq ORF: 531 bp

Locus ID: 50604

UniProt ID: [Q9NYY1](#)

**Cytogenetics:** 1q32.1

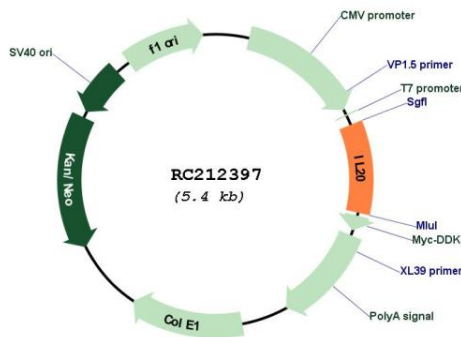
**Protein Families:** Druggable Genome, Secreted Protein

**Protein Pathways:** Cytokine-cytokine receptor interaction, Jak-STAT signaling pathway

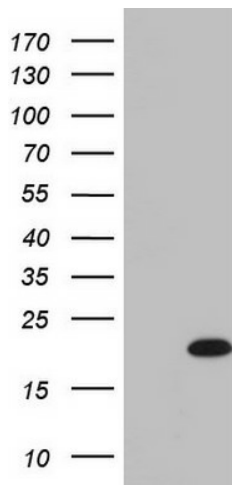
**MW:** 20.1 kDa

**Gene Summary:** The protein encoded by this gene is a cytokine structurally related to interleukin 10 (IL10). This cytokine has been shown to transduce its signal through signal transducer and activator of transcription 3 (STAT3) in keratinocytes. A specific receptor for this cytokine is found to be expressed in skin and upregulated dramatically in psoriatic skin, suggesting a role for this protein in epidermal function and psoriasis. [provided by RefSeq, Jul 2008]

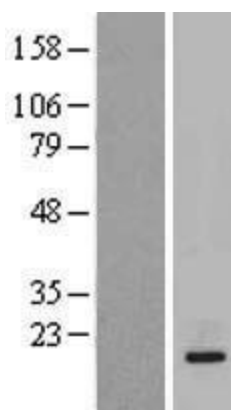
**Product images:**



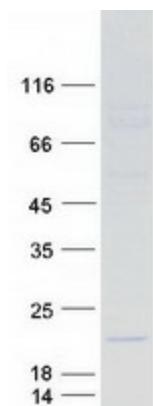
Circular map for RC212397



HEK293T cells were transfected with the pCMV6-ENTRY control (Cat# [PS100001], Left lane) or pCMV6-ENTRY IL20 (Cat# RC212397, Right lane) cDNA for 48 hrs and lysed. Equivalent amounts of cell lysates (5 ug per lane) were separated by SDS-PAGE and immunoblotted with anti-IL20 (Cat# [TA803504]). Positive lysates [LY412869] (100ug) and [LC412869] (20ug) can be purchased separately from OriGene.



Western blot validation of overexpression lysate (Cat# [LY412869]) using anti-DDK antibody (Cat# [TA50011-100]). Left: Cell lysates from untransfected HEK293T cells; Right: Cell lysates from HEK293T cells transfected with RC212397 using transfection reagent MegaTran 2.0 (Cat# [TT210002]).



Coomassie blue staining of purified IL20 protein (Cat# [TP312397]). The protein was produced from HEK293T cells transfected with IL20 cDNA clone (Cat# RC212397) using MegaTran 2.0 (Cat# [TT210002]).