

Product datasheet for RC212395

ADAT2 (NM_182503) Human Tagged ORF Clone

Product data:

Product Type: Expression Plasmids
Product Name: ADAT2 (NM_182503) Human Tagged ORF Clone
Tag: Myc-DDK
Symbol: ADAT2
Synonyms: DEADC1; dj20N2; dj20N2.1; TAD2
Mammalian Cell Selection: Neomycin
Vector: pCMV6-Entry (PS100001)
E. coli Selection: Kanamycin (25 ug/mL)
ORF Nucleotide Sequence: >RC212395 representing NM_182503
 Red=Cloning site Blue=ORF Green=Tags(s)

TTTTGTAATACGACTCACTATAGGGCGCCGGGAATTCGTCGACTGGATCCGGTACCGAGGAGATCTGCC
 GCC**CGATCGCC**

ATGGAGGCGAAGGCGGCACCCAAGCCAGCTGCAAGCGGCGGTGCTCGGTGTCGGCAGAGGAGACCGAAA
 AGTGGATGGAGGAGGCGATGCACATGGCCAAAGAAGCCCTCGAAAATACTGAAGTTCCTGTTGGCTGTCT
 TATGGTCTACAACATGAAGTTGTAGGGAAGGGAGAAAATGAAGTTAACCAAACCAAAAAATGCTACTCGA
 CATGCAGAAATGGTGGCCATCGATCAGTCTCGATTGGTGTCTGCAAAGTGGCAAGAGTCCCTCTGAAG
 TATTTGAACACACTGTGTTGTATGTCACCTGTGGAGCCGTGCATTATGTGTGCAGCTGCTCTCCGCTGAT
 GAAAATCCCGCTGGTGTATATGGCTGTGAGAATGAACGATTTGGTGGTGTGGCTCTGTTCTAAATATT
 GCCTCTGCTGACCTACCAAACTGGGAGACCATTTCAAGTGTATCCCTGGATATCGGGCTGAGGAAGCAG
 TGGAAATGTTAAAGACCTTCTACAAACAAGAAAATCCAAATGCACCAAAATCGAAAGTTCGGAAGAAAGGA
 ATGTCAGAAATCT

ACGCGTACGCGGCCGCTCGAGCAGAACTCATCTCAGAAGAGGATCTGGCAGCAATGATATCCTGGATT
 ACAAGGATGACGACGATAAGGTTTAA

Protein Sequence: >RC212395 representing NM_182503
 Red=Cloning site Green=Tags(s)

MEAKAAPKPAASGACSVSAEETEKWMEEAMHMAKEALENTEVPVGCLMVYNNEVVGKGRNEVNQTKNATR
 HAEMVAIDQVLDWCRQSGKSPSEVFHTVLYVTVEPCIMCAAALRLMKIPLVVYGCQNERFGGCGSVLNI
 ASADLPNTGRPFQICIPGYRAEEAVEMLKTFYKQENPNAPKSKVRKKECQKS

TRTRPLEQKLISEEDLAANDILDYKDDDDKV



[View online »](#)

Chromatograms: https://cdn.origene.com/chromatograms/mk8025_b03.zip

Restriction Sites: SgfI-MluI

Cloning Scheme:



ACCN: NM_182503

ORF Size: 573 bp

OTI Disclaimer: The molecular sequence of this clone aligns with the gene accession number as a point of reference only. However, individual transcript sequences of the same gene can differ through naturally occurring variations (e.g. polymorphisms), each with its own valid existence. This clone is substantially in agreement with the reference, but a complete review of all prevailing variants is recommended prior to use. [More info](#)

OTI Annotation: This clone was engineered to express the complete ORF with an expression tag. Expression varies depending on the nature of the gene.

Components: The ORF clone is ion-exchange column purified and shipped in a 2D barcoded Matrix tube containing 10ug of transfection-ready, dried plasmid DNA (reconstitute with 100 ul of water).

Reconstitution Method:

1. Centrifuge at 5,000xg for 5min.
2. Carefully open the tube and add 100ul of sterile water to dissolve the DNA.
3. Close the tube and incubate for 10 minutes at room temperature.
4. Briefly vortex the tube and then do a quick spin (less than 5000xg) to concentrate the liquid at the bottom.
5. Store the suspended plasmid at -20°C. The DNA is stable for at least one year from date of shipping when stored at -20°C.

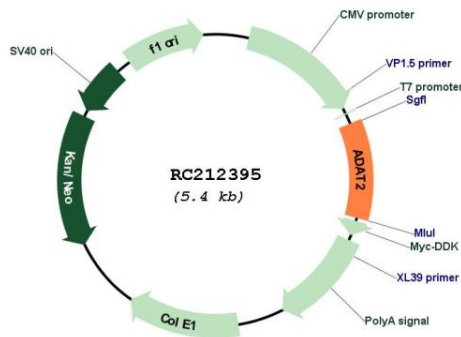
Note: Plasmids are not sterile. For experiments where strict sterility is required, filtration with 0.22um filter is required.

RefSeq: [NM_182503.3](#)

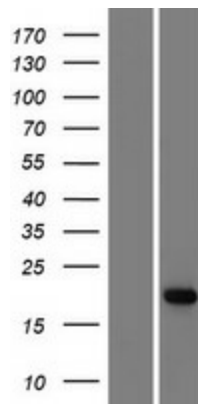
RefSeq Size: 6270 bp

RefSeq ORF: 576 bp
 Locus ID: 134637
 UniProt ID: [Q7Z6V5](#)
 Cytogenetics: 6q24.2
 MW: 20.9 kDa
 Gene Summary: Probably participates in deamination of adenosine-34 to inosine in many tRNAs. [UniProtKB/Swiss-Prot Function]

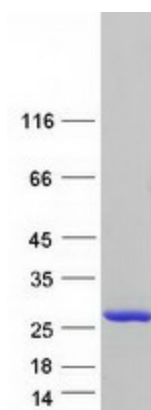
Product images:



Circular map for RC212395



Western blot validation of overexpression lysate (Cat# [LY405523]) using anti-DDK antibody (Cat# [TA50011-100]). Left: Cell lysates from untransfected HEK293T cells; Right: Cell lysates from HEK293T cells transfected with RC212395 using transfection reagent MegaTran 2.0 (Cat# [TT210002]).



Coomassie blue staining of purified ADAT2 protein (Cat# [TP312395]). The protein was produced from HEK293T cells transfected with ADAT2 cDNA clone (Cat# RC212395) using MegaTran 2.0 (Cat# [TT210002]).