

Product datasheet for RC212390

PSMB11 (NM_001099780) Human Tagged ORF Clone

Product data:

Product Type:	Expression Plasmids
Product Name:	PSMB11 (NM_001099780) Human Tagged ORF Clone
Tag:	Myc-DDK
Symbol:	PSMB11
Synonyms:	BETA5T
Mammalian Cell Selection:	Neomycin
Vector:	pCMV6-Entry (PS100001)
E. coli Selection:	Kanamycin (25 ug/mL)
ORF Nucleotide Sequence:	>RC212390 representing NM_001099780 Red=Cloning site Blue=ORF Green=Tags(s)

TTTTGTAATACGACTCACTATAGGGCGGCCGGAATTCGTCGACTGGATCCGGTACCGAGGAGATCTGCC
GCC**CGATCGCC**

ATGGCTCTGCAGGATGTGTGCAAGTGGCAGTCCCCTGACACCCAGGGACCATCACCTCACCTGCCTCGGG
CTGGCGGCTGGGCTGTGCCCGGGGTTGTGACCCTCAAACCTTCTGCAGATCCATGGCCCCAGACTGGC
CCACGGCACCACCACTCTGGCCTCCGCTTCCGTATGGAGTCATTGCTGCAGCTGACACGCGTTCTCCTC
TGTGGCAGCTATGTGGCGTGTCCAGCCTCATGCAAGGTCATCCCTGTGCACCAGCACCTCCTGGGTACCA
CCTCTGGCACCTCTGCCACTGTGCTACCTGGTATCGGGTATTACAGCGGAGCTGCGGCTTCGGGAAC
GAGGGAGGGTCAGCTGCCAGTGTGGCCAGTGTGCCAAGCTCTTGTGAGCCATGATGTCTCAATACCGG
GGACTGGATCTCTGTGTGGCCACTGCCCTCTGCGGCTGGGACCGCTCTGGCCCTGAGCTCTTCTACGTCT
ATAGCGACGGCACCCGCCTGCAGGGGGACATCTTCTGTGGGCTCTGGATCTCCCTATGCCTACGGCGT
GCTAGACCGTGGCTATCGCTACGACATGAGCACCCAGGAAGCCTACGCCCTGGCTCGCTGCGCCGTGGCC
CACGCCACCCACCGTGTGCCTATTAGGGGGCTCTGTAGACCTTTCCACGTGCGGGAGAGTGGATGGG
AGCATGTGTCACGCAGTGTGCCTGTGTGCTGTACGTGGAGTTACAGAAGCTCCTGGAGCCGGAGCCAGA
GGAGGATGCCAGCCATGCCATCCTGAGCCTGCCACTGCCACAGAGCTGCAGAAGATAGAGAGCTCTCT
GTGGGGCCAGGGAGGTGACACCAGGAGACTCCAGGATGCCAGCAGGGACTGAGACGGTG

AG**CGGACCG**ACGCGTACGCGGCCGCTCGAGCAGAACTCATCTCAGAAGAGGATCTGGCAGCAAATGATATCC
TGGATTACAAGGATGACGACGATAAGGTTAA



[View online »](#)

Protein Sequence: >RC212390 representing NM_001099780
 Red=Cloning site Green=Tags(s)

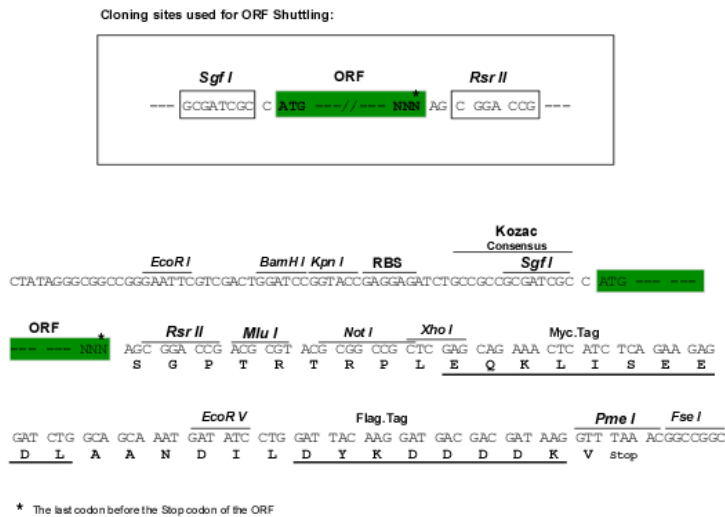
MALQDVCKWQSPDTQGSPHLPKAGGWAVPRGCDPQTFLLQIHGPRLAHGTTTLAFRFRHGVIAAADTRSS
 CGSYVACPASCKVIPVHQHLLGTTSGTSADCATWYRVLQRELRLRELREGQLPSVASAAKLLSAMMSQYR
 GLDLCVATALCGWDRSGPELFYVYSDGTRLQGDIFSVGSGSPYAYGVLDRGYRYDMSTQEAYALARCAVA
 HATHRDAYSGGSVDLFHVRESGWEHVSRSDACVLYVELQKLEPEPEEDASHAHPEPATAHRAAEDRELS
 VGPGEVTPGDSRMPAGTETV

SGP TRRRLEQKLI SEEDLAANDILDYKDDDDKV

Chromatograms: https://cdn.origene.com/chromatograms/mk8024_e11.zip

Restriction Sites: SgfI-RsrII

Cloning Scheme:



ACCN: NM_001099780

ORF Size: 900 bp

OTI Disclaimer: The molecular sequence of this clone aligns with the gene accession number as a point of reference only. However, individual transcript sequences of the same gene can differ through naturally occurring variations (e.g. polymorphisms), each with its own valid existence. This clone is substantially in agreement with the reference, but a complete review of all prevailing variants is recommended prior to use. [More info](#)

OTI Annotation: This clone was engineered to express the complete ORF with an expression tag. Expression varies depending on the nature of the gene.

Components: The ORF clone is ion-exchange column purified and shipped in a 2D barcoded Matrix tube containing 10ug of transfection-ready, dried plasmid DNA (reconstitute with 100 ul of water).

Reconstitution Method:

1. Centrifuge at 5,000xg for 5min.
2. Carefully open the tube and add 100ul of sterile water to dissolve the DNA.
3. Close the tube and incubate for 10 minutes at room temperature.
4. Briefly vortex the tube and then do a quick spin (less than 5000xg) to concentrate the liquid at the bottom.
5. Store the suspended plasmid at -20°C. The DNA is stable for at least one year from date of shipping when stored at -20°C.

RefSeq: [NM_001099780.2](#)

RefSeq Size: 1894 bp

RefSeq ORF: 903 bp

Locus ID: 122706

UniProt ID: [A5LHX3](#)

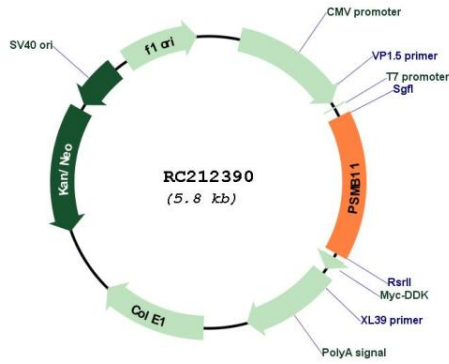
Cytogenetics: 14q11.2

Protein Pathways: Proteasome

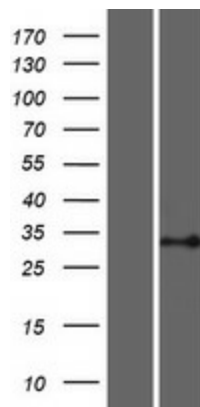
MW: 32.3 kDa

Gene Summary: Proteasomes generate peptides that are presented by major histocompatibility complex (MHC) I molecules to other cells of the immune system. Proteolysis is conducted by 20S proteasomes, complexes of 28 subunits arranged as a cylinder in 4 heteroheptameric rings: alpha-1 to -7, beta-1 to -7, beta-1i to -7, and alpha-1i to -7. The catalytic subunits are beta-1 (PSMB6; MIM 600307), beta-2 (PSMB7; MIM 604030), and beta-5 (PSMB5; MIM 600306). Three additional subunits, beta-1i (PSMB9; MIM 177045), beta-2i (PSMB10; MIM 176847), and beta-5i (PSMB8; MIM 177046), are induced by gamma-interferon (IFNG; MIM 147570) and are preferentially incorporated into proteasomes to make immunoproteasomes. PSMB11, or beta-5t, is a catalytic subunit expressed exclusively in cortical thymic epithelial cells (Murata et al., 2007 [PubMed 17540904]).[supplied by OMIM, Mar 2008]

Product images:



Circular map for RC212390



Western blot validation of overexpression lysate (Cat# [LY420530]) using anti-DDK antibody (Cat# [TA50011-100]). Left: Cell lysates from untransfected HEK293T cells; Right: Cell lysates from HEK293T cells transfected with RC212390 using transfection reagent MegaTran 2.0 (Cat# [TT210002]).