

Product datasheet for **RC212385**

IRX5 (NM_005853) Human Tagged ORF Clone

Product data:

Product Type:	Expression Plasmids
Product Name:	IRX5 (NM_005853) Human Tagged ORF Clone
Tag:	Myc-DDK
Symbol:	IRX5
Synonyms:	HMMS; IRX-2a; IRXB2
Mammalian Cell Selection:	Neomycin
Vector:	pCMV6-Entry (PS100001)
E. coli Selection:	Kanamycin (25 ug/mL)



[View online »](#)

ORF Nucleotide Sequence:

>RC212385 representing NM_005853
 Red=Cloning site Blue=ORF Green=Tags(s)

TTTTGTAATACGACTCACTATAGGGCGGCCGGAATTCGTCGACTGGATCCGGTACCGAGGAGATCTGCC
 GCC**CGGATCGCC**

ATGTCCTATCCGAGGGCTACTTGTACCAGCCGTCGCCCTCGCTGGCGCTCTACTCGTGCCCGCGGTACA
 GCACCAGCGTCATTTTCGGGGCCCCGCACGGATGAGCTCGGCCGCTTCTTCGGGCTCCGGTTCTCGCC
 CTACGCTGGCTCGACTGCCTTACCGCGCCCTCGCCGGGTACAACCTCGACCTCCAGTACGGCGCCGAC
 CCCGCGGCCGCCGCCGCCGCCCTTCTCCTCGTACGTGGGCTCTCCCTACGACCACACCCGGCATGG
 CGGGCTCCTTGGGTACCATCCTTACGCGGCCCCCTGGGATCGTACCCTTACGGGGACCCAGCGTACCG
 GAAGAACGCCACAAGGGACGCCACGGCTACCCTCAAGGCTGGCTCAACGAGCACCAGCAAGAACCCTAC
 CCCACCAAGGGCGAGAAGATCATGCTGGCCATCATACCAAGATGACCCTCACCCAGGTGCCACCTGGT
 TCGCCAACGCGCGCCGGCGCCTCAAGAAAGAGAATAAAATGACGTGGACGCCGCGGAACCCGAGCGAGGA
 CGAGGAAGAGGAGGAGAACATTGACCTGGAGAAGAACGACGAGGACGAGCCCAGAAGCCCGAGGACAAG
 GCGGACCCCGAGGGCCCCGAAGCAGGAGGAGCTGAGCAGAAGGCGGCTTCGGGCTGCGAACGGCTTCAGG
 GACCACCCACCCCTGCAGGCAAGGAGACGGAGGGCAGCCTCAGCGACTCGGATTTAAGGAGCCGCCCTC
 GGAGGGCCGCTCGACGCGCTGCAGGGCCCCCCCCGACCCGGCGGGCCCTCCCGGCTGGGCCAGCGGCG
 GCGCGGCTGGCGGAGGACCCGGCCCTCACTACCCCGCGGAGCGCCGGCGCCCGGCCGCATCCAGCCG
 CGGGCGAGGTGCCTCCGGTCCCGGCGGGCCCTCGGTTATCCATTCGCCGCTCCGCCCGCCCTCCTGC
 GGTGCTCGCCAAGCCAACTGTGGTCTTTGGCAGAGATCGCCACATCGTCGGACAAGGTCAAGGACGGG
 GCGCGCGGAACGAGGGCTCTCCATGCCACCGTGTCCCGGGCCATAGCCGGCAAGCCCTAGGAGGCA
 GCCGGCGTCCCGGCCCGCGCCGCGTACGCTCGCCCTCGCGCAGTGTCTTTCCAGCGGGGACGCGT
 GCTGTCCCGGCTCTACTACACCGCCCTTCTATCCCGCTACACGAACTATGGCTCCTTCGGACAC
 CTTTATGGCCACCCGGGCCCCGGCCAGGCCCAACCAGTCCGGGCTCATTTCATGATTAAACC
 AGACCGTGTGAACCGAGCGGACGCTTTGGCTAAAGACCCGAAAATGTTGCGGAGCCAGTCTCAGCTAGA
 CCTGTGCAAGACTCTCCCTATGAATTGAAGAAAGGTATGTCCGACATT

ACGCGTACGCGGCCGCTCGAGCAGAACTCATCTCAGAAGAGGATCTGGCAGCAATGATATCCTGGATT
 ACAAGGATGACGACGATAAGGTTTAA

Protein Sequence:

>RC212385 representing NM_005853
 Red=Cloning site Green=Tags(s)

MSYPQGYLYQPSASLALYSCPAYSTSVISGPRDELGRSSSGSAFSPYAGSTAFTAPSPGYNSHLQYGAD
 PAAAAAAAFSSYVGSYDHTPGMAGSLGYHPYAAPLGSYPYGDPAAYRKNATRDATATLKAWLNEHRKNPY
 PTKGEKIMLAIITKMTLTQVSTWFANARRRLKENKMTWTPRNRSEDEEEEEENIDLEKNDDEPQKPEDK
 GDPEGPEAGGAEQKAASGGERLQGPPTPAGKETEGSLSDSDFKEPPSEGRLDALQGPRTGGPSPAGPAA
 ARLAEDPAPHYPAGAPAPGHPAAGEVPPGPGGSPVIHSPPPPPPAVLAKPKLWSLAEIATSSDKVKDG
 GGGNEGSPCPPGPIAGQALGGSRASAPAPSRSPAQCFFPGGTVLSRPLYYTAPFYPGYTYNGSFGH
 LHGHPGPGPPTTGPESHFNLNQTVLNRADALAKDPKMLRSQQLDLCKDSPYELKKGMSDI

TRTRPLEQKLISEEDLAANDILDYKDDDDKV

Chromatograms:

https://cdn.origene.com/chromatograms/mk8120_g07.zip

Restriction Sites:

Sgfl-MluI

Cloning Scheme:

Cloning sites used for ORF Shutting:



* The last codon before the Stop codon of the ORF

ACCN: NM_005853

ORF Size: 1449 bp

OTI Disclaimer: The molecular sequence of this clone aligns with the gene accession number as a point of reference only. However, individual transcript sequences of the same gene can differ through naturally occurring variations (e.g. polymorphisms), each with its own valid existence. This clone is substantially in agreement with the reference, but a complete review of all prevailing variants is recommended prior to use. [More info](#)

OTI Annotation: This clone was engineered to express the complete ORF with an expression tag. Expression varies depending on the nature of the gene.

Components: The ORF clone is ion-exchange column purified and shipped in a 2D barcoded Matrix tube containing 10ug of transfection-ready, dried plasmid DNA (reconstitute with 100 ul of water).

Reconstitution Method:

1. Centrifuge at 5,000xg for 5min.
2. Carefully open the tube and add 100ul of sterile water to dissolve the DNA.
3. Close the tube and incubate for 10 minutes at room temperature.
4. Briefly vortex the tube and then do a quick spin (less than 5000xg) to concentrate the liquid at the bottom.
5. Store the suspended plasmid at -20°C. The DNA is stable for at least one year from date of shipping when stored at -20°C.

RefSeq: [NM_005853.6](#)
RefSeq Size: 2078 bp

RefSeq ORF: 1452 bp

Locus ID: 10265

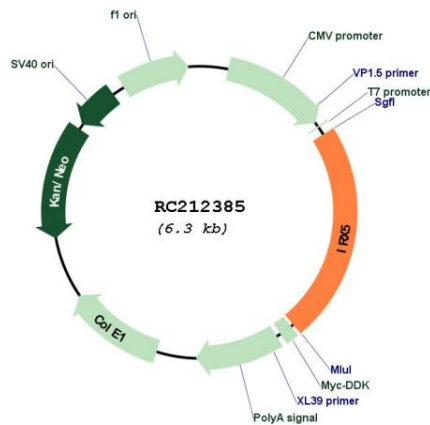
UniProt ID: [P78411](#)
Cytogenetics: 16q12.2

Protein Families: Transcription Factors

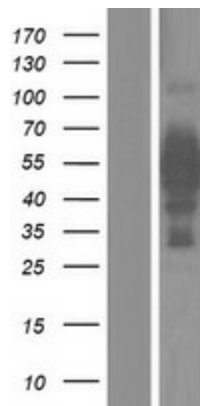
MW: 50.8 kDa

Gene Summary: This gene encodes a member of the iroquois homeobox gene family, which are involved in several embryonic developmental processes. Knockout mice lacking this gene show that it is required for retinal cone bipolar cell differentiation, and that it negatively regulates potassium channel gene expression in the heart to ensure coordinated cardiac repolarization. Alternatively spliced transcript variants encoding different isoforms have been found for this gene. [provided by RefSeq, Nov 2011]

Product images:



Circular map for RC212385



Western blot validation of overexpression lysate (Cat# [LY417041]) using anti-DDK antibody (Cat# [TA50011-100]). Left: Cell lysates from untransfected HEK293T cells; Right: Cell lysates from HEK293T cells transfected with RC212385 using transfection reagent MegaTran 2.0 (Cat# [TT210002]).