

Product datasheet for **RC212381**

MADCAM1 (NM_130762) Human Tagged ORF Clone

Product data:

Product Type:	Expression Plasmids
Product Name:	MADCAM1 (NM_130762) Human Tagged ORF Clone
Tag:	Myc-DDK
Symbol:	MADCAM1
Synonyms:	MACAM1
Mammalian Cell Selection:	Neomycin
Vector:	pCMV6-Entry (PS100001)
E. coli Selection:	Kanamycin (25 ug/mL)
ORF Nucleotide Sequence:	>RC212381 representing NM_130762 Red=Cloning site Blue=ORF Green=Tags(s)

TTTTGTAATACGACTCACTATAGGGCGGCCGGAATTCGTCGACTGGATCCGGTACCGAGGAGATCTGCC
GCC**CGCATCGCC**

ATGGATTCGGACTGGCCCTCTGCTGGCGGGCTTCTGGGGCTCCTCCTCGGCCAGTCCCTCCAGGTGA
AGCCCCGCAGGTGGAGCCCCGGAGCCGGTGGTGGCCGTGGCCCTGGGCGCCTCGCGCCAGCTCACCTG
CCGCCTGGCCTGCGCGGACCGCGGGGCCCTCGGTGCAGTGGCGGGCCCTGGACACCAGCCTGGGCGCGGTG
CAGTCGGACACGGGCCGAGCGTCTCACCGTGCACAACGCCTCGCTGTCGGCGGCCGGGACCCGCGTGT
GCGTGGGCTCCTGCGGGGCCGACCTTCCAGCACACCGTGCAGTCTCTGTGTACGCCTTCCCGGACCA
GCTGACCGTCTCCCCAGCAGCCCTGGTGCCTGGTGACCCGGAGGTGGCCTGTACGGCCACAAAAGTCAGG
CCCGTGGACCCCAACGCGCTCTCCTTCTCCCTGCTCGTGGGGGCCAGGAACTGGAGGGGGCGCAAGCCC
TGGGCCCGGAGGTGCAGGAGGAGGAGGAGGCCAGGGGGACGAGGACGTGCTGTTACAGGGTGCAGA
GCGCTGGCGGCTGCCGCCCTGGGGACCCCTGTCCCGCCGCCCTCTACTGCCAGGCCAGATGAGGCTG
CCTGGCTTGGAGCTCAGCCACCGCCAGGCCATCCCCGCGTCCAAACCTGCGGGTGACCAGCTGCCCGCG
CTCTGTGGACCAGCAGTGCAGTGGTGGTGGTGGTGGTGGTGGTGGTGGTGGTGGTGGTGGTGGTGGTGGT
CTGCCGGCACCTGGCTGAGGACGACACCCACCCACCCAGCTTCTCTGAGGCTTCTGCCCAAGTGTCCGCC
TGGGCTGGGTTAAGGGGGACCGCCAGGTCCGGATCAGCCCTCC

ACGCGTACGCGGGCCGCTCGAGCAGAAACTCATCTCAGAAGAGGATCTGGCAGCAAATGATATCCTGGATT
ACAAGGATGACGACGATAAGGTTTAA



[View online »](#)

Protein Sequence: >RC212381 representing NM_130762
Red=Cloning site Green=Tags(s)

MDFGLALLLAGLLGLLLQSLQVKPLQVEPPEPVVAVALGASRQLTCRLACADRGASVQWRGLDTSLGAV
 QSDTGRSVLTVRNASLSAAGTRVCVCGSCGGRTFQHTVQLLVYAFPDQLTVSPAALVPGDPEVACTAHKVT
 PVDPNALSFLLVGGQELEGAQALGPEVQEEEEEPQGEDVLFVTERWRLPPLGTPVPPALYQCQATMRL
 PGLELSHRQAIPASKPAGDQLPAALWTSSAVLGLLLLALPTYHLWKRCRHLAEDDTHPPASLRLLPQVSA
 WAGLRGTGQVGISPS

TRTRPLEQKLISEEDLAANDILDYKDDDDKV

Restriction Sites: SgfI-MluI

Cloning Scheme:

Cloning sites used for ORF Shuttling:



* The last codon before the Stop codon of the ORF

ACCN: NM_130762

ORF Size: 885 bp

OTI Disclaimer: The molecular sequence of this clone aligns with the gene accession number as a point of reference only. However, individual transcript sequences of the same gene can differ through naturally occurring variations (e.g. polymorphisms), each with its own valid existence. This clone is substantially in agreement with the reference, but a complete review of all prevailing variants is recommended prior to use. [More info](#)

OTI Annotation: This clone was engineered to express the complete ORF with an expression tag. Expression varies depending on the nature of the gene.

Components: The ORF clone is ion-exchange column purified and shipped in a 2D barcoded Matrix tube containing 10ug of transfection-ready, dried plasmid DNA (reconstitute with 100 ul of water).

Reconstitution Method:

1. Centrifuge at 5,000xg for 5min.
2. Carefully open the tube and add 100ul of sterile water to dissolve the DNA.
3. Close the tube and incubate for 10 minutes at room temperature.
4. Briefly vortex the tube and then do a quick spin (less than 5000xg) to concentrate the liquid at the bottom.
5. Store the suspended plasmid at -20°C. The DNA is stable for at least one year from date of shipping when stored at -20°C.

RefSeq: [NM_130762.3](#)

RefSeq Size: 1275 bp

RefSeq ORF: 888 bp

Locus ID: 8174

UniProt ID: [Q13477](#)

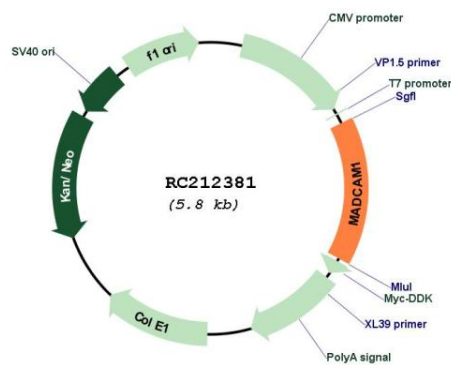
Cytogenetics: 19p13.3

Protein Pathways: Cell adhesion molecules (CAMs)

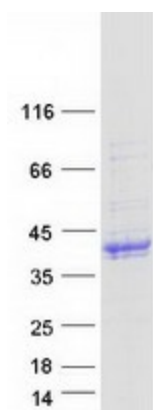
MW: 29.3 kDa

Gene Summary: The protein encoded by this gene is an endothelial cell adhesion molecule that interacts preferentially with the leukocyte beta7 integrin LPAM-1 (alpha4beta7), L-selectin, and VLA-4 (alpha4beta1) on myeloid cells to direct leukocytes into mucosal and inflamed tissues. It is a member of the immunoglobulin family and is similar to ICAM1 and VCAM1. At least seven alternatively spliced transcripts encoding different protein isoforms have been found for this gene, but the full-length nature of some variants has not been determined. [provided by RefSeq, Jul 2008]

Product images:



Circular map for RC212381



Coomassie blue staining of purified MADCAM1 protein (Cat# [TP312381]). The protein was produced from HEK293T cells transfected with MADCAM1 cDNA clone (Cat# RC212381) using MegaTran 2.0 (Cat# [TT210002]).