

Product datasheet for RC212378

AMMECR1 (NM_015365) Human Tagged ORF Clone

Product data:

Product Type:	Expression Plasmids
Product Name:	AMMECR1 (NM_015365) Human Tagged ORF Clone
Tag:	Myc-DDK
Symbol:	AMMECR1
Synonyms:	AMMERC1; MFHIEN
Mammalian Cell Selection:	Neomycin
Vector:	pCMV6-Entry (PS100001)
E. coli Selection:	Kanamycin (25 ug/mL)
ORF Nucleotide Sequence:	>RC212378 representing NM_015365 Red=Cloning site Blue=ORF Green=Tags(s)

TTTTGTAATACGACTCACTATAGGGCGGCCGGAATTCGTCGACTGGATCCGGTACCGAGGAGATCTGCC
GCC**CGATCGCC**

ATGGCGCGGGTTGCTGCGGGTGAAGAAGCAGAACTGTCCAGTTCGCCCCCTCTGGCTCGGGTGGCG
GTGGTGGCGCCTCCTCCTCCACTGCAGCGGAGAGGCCAGTGCCGAGCTGGGGAGCTGGGACTAGG
AGGCGCCGGTACGCGGCTCAACGGGCTGGGAGGTCTAACCAGGAGAGGTAGCGGCAGCGGCTGTACCCTC
TCTCCCCCAGGGCTGCGGCGGCGGCGGGGGATCGCCCTGTCGCCACCTCCGAGCTGCGGAGTGG
GGACCCTACTTTCTACCCCGGCCGCCACCTTCTCACCCTCCTCATCGTCCGCCCTCGTCCTC
ATCGCCGGGCTCCCGAAGATGGTGTGTCAGCAGAGATGTGCTGCTTTTGTTCGATGTGCTCTACTGT
CACCTGTATGGATACCAGCAGCCCCGACCCCGATTACCAACGAGCCCTACCACTGTTTGTAAACAT
GGAAGATTGGTCGAGACAAAAGATTACGTGGATGCATAGGTACTTTTTCTGCCATGAATTTGCATTCAGG
ACTCAGGGAGTACACACTTACCAGTGCCCTTAAAGATAGCCGTTTTCCCAATGACAAGGGATGAGCTG
CCACGGCTTTTCTGCTCAGTGTCTGCTCACTAACTTTGAAGATGTCTGTGATTATTTGGACTGGGAGG
TGGGTGTACATGGCATTAGAATAGAATTCATCAATGAAAAGGATCAAAACGCACCGCCACCTACCTACC
GGAGTTGCAAAGGAGCAAGGATGGGACCATATACAGACCATAGACTCCTTATTGAGGAAAGGAGGATAC
AAAGCTCCGATTACTAATGAATTCAGGAAAACCATAAAAGTACCAGGTATCGTAGTAAAAGATGACCC
TGAGCTATGCTGAATACCTTGCTCATCGCCAGCATCATATTTCCAAAATGGCATTGGGCATCCCCTTCC
GCCATACAACCATTATTCC

ACGCGTACGCGCGCGCTCGAGCAGAACTCATCTCAGAAGAGGATCTGGCAGCAAATGATATCCTGGATT
ACAAGGATGACGACGATAAGGTTTAA



[View online »](#)

Protein Sequence: >RC212378 representing NM_015365
Red=Cloning site Green=Tags(s)

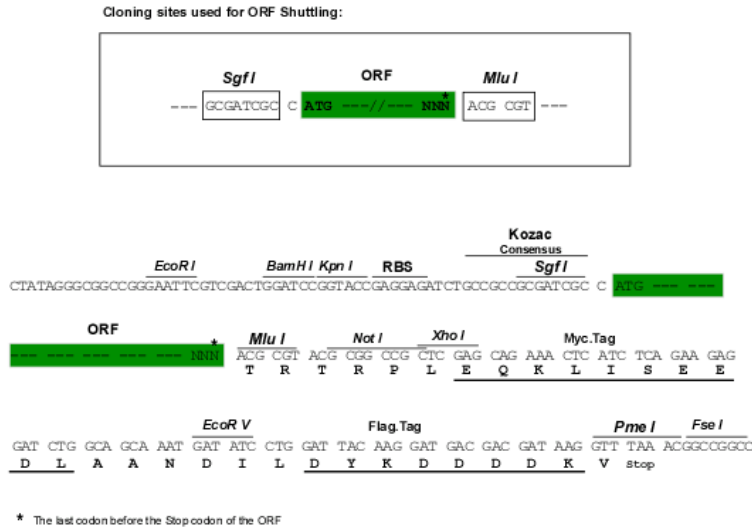
MAAGCCGVKKQKLSSPPSGSGGGGASSSSHCSGESQCRAGELGLGGAGTRLNGLGGLTGGGSGSGCTL
 SPPQCGGGGGGIALSPPPSCGVGTLLSTPAAATSSSPSSSAASSSSPGSRKMVVAEMCCFCFDVLYC
 HLYGYQPRTPRFTNEPYPLFVTKIGRDKRLRGICIGTFSAMNLHSLGREYTLTSALKDSRFPMPTRDEL
 PRLFCVSLLTNFEDVCDYLDWEVGVHGIRIEFINKEGSKRTATYLPEVAKEQGW DHIQTIDSLLRKGGY
 KAPITNEFRKTIKLTRYRSEKMTLSYAEYLAHRQH HFFQNGIGHPLPPYNHYS

TRTRPLEQKLISEEDLAANDILDYKDDDDKV

Chromatograms: https://cdn.origene.com/chromatograms/mk8052_g11.zip

Restriction Sites: SgfI-MluI

Cloning Scheme:



ACCN: NM_015365

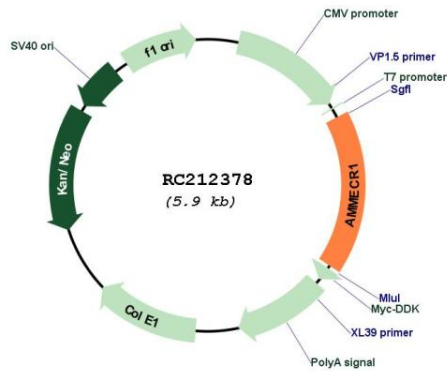
ORF Size: 999 bp

OTI Disclaimer: Due to the inherent nature of this plasmid, standard methods to replicate additional amounts of DNA in E. coli are highly likely to result in mutations and/or rearrangements. Therefore, OriGene does not guarantee the capability to replicate this plasmid DNA. Additional amounts of DNA can be purchased from OriGene with batch-specific, full-sequence verification at a reduced cost. Please contact our customer care team at custsupport@origene.com or by calling 301.340.3188 option 3 for pricing and delivery.

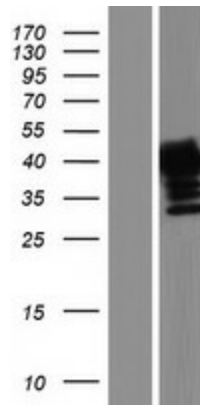
The molecular sequence of this clone aligns with the gene accession number as a point of reference only. However, individual transcript sequences of the same gene can differ through naturally occurring variations (e.g. polymorphisms), each with its own valid existence. This clone is substantially in agreement with the reference, but a complete review of all prevailing variants is recommended prior to use. [More info](#)

OTI Annotation:	This clone was engineered to express the complete ORF with an expression tag. Expression varies depending on the nature of the gene.
Components:	The ORF clone is ion-exchange column purified and shipped in a 2D barcoded Matrix tube containing 10ug of transfection-ready, dried plasmid DNA (reconstitute with 100 ul of water).
Reconstitution Method:	<ol style="list-style-type: none">1. Centrifuge at 5,000xg for 5min.2. Carefully open the tube and add 100ul of sterile water to dissolve the DNA.3. Close the tube and incubate for 10 minutes at room temperature.4. Briefly vortex the tube and then do a quick spin (less than 5000xg) to concentrate the liquid at the bottom.5. Store the suspended plasmid at -20°C. The DNA is stable for at least one year from date of shipping when stored at -20°C.
RefSeq:	NM_015365.3
RefSeq Size:	5431 bp
RefSeq ORF:	1002 bp
Locus ID:	9949
UniProt ID:	Q9Y4X0
Cytogenetics:	Xq23
Protein Families:	Druggable Genome
MW:	35.3 kDa
Gene Summary:	The exact function of this gene is not known, however, submicroscopic deletion of the X chromosome including this gene, COL4A5, and FAFL4 genes, result in a contiguous gene deletion syndrome, the AMME complex (Alport syndrome, mental retardation, midface hypoplasia, and elliptocytosis). Alternatively spliced transcript variants encoding different isoforms have been found for this gene. [provided by RefSeq, Jan 2010]

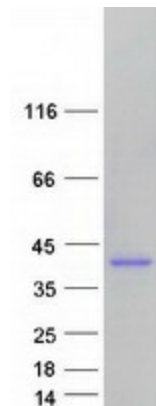
Product images:



Circular map for RC212378



Western blot validation of overexpression lysate (Cat# [LY414594]) using anti-DDK antibody (Cat# [TA50011-100]). Left: Cell lysates from untransfected HEK293T cells; Right: Cell lysates from HEK293T cells transfected with RC212378 using transfection reagent MegaTran 2.0 (Cat# [TT210002]).



Coomassie blue staining of purified AMMECR1 protein (Cat# [TP312378]). The protein was produced from HEK293T cells transfected with AMMECR1 cDNA clone (Cat# RC212378) using MegaTran 2.0 (Cat# [TT210002]).