

Product datasheet for RC212375

MED13L (NM_015335) Human Tagged ORF Clone

Product data:

Product Type:	Expression Plasmids
Product Name:	MED13L (NM_015335) Human Tagged ORF Clone
Tag:	Myc-DDK
Symbol:	MED13L
Synonyms:	MRFACD; PROSIT240; THRAP2; TRAP240L
Mammalian Cell Selection:	Neomycin
Vector:	pCMV6-Entry (PS100001)
E. coli Selection:	Kanamycin (25 ug/mL)
ORF Nucleotide Sequence:	>RC212375 representing NM_015335 Red=Cloning site Blue=ORF Green=Tags(s)

TTTTGTAATACGACTCACTATAGGGCGGCCGGAATTCGTCGACTGGATCCGGTACCGAGGAGATCTGCC
GCCCGATCGCC

ATGACTGCGGCAGCGAACTGGGTGGCGAACGGGGCGAGCCTGGAGGATTGTCACTCCAACCTCTTTTCGC
TGGCTGAACTCACGGGAATCAAATGGCGTAGGTACAATTTGGAGGGCATGGGGACTGTGGACCCATAAT
TTCAGCCCCAGCCCAAGATGATCCAATTCTGTTAAGTTTCATCCGCTGTCTGCAAGCTAACCTGCTTTGT
GTATGGCGTCGTGATGTCAAACAGATTGCAAAGAGTTATGGATATTCTGGTGGGAGATGAACCAACC
TAGTGGGTGTAATACATCATGAACTGCAGTTGTGGAAGAAGGACTCTGGGAAAAATGGCCTTTCCTATGA
ATGTAGGACGCTGCTCTTCAAAGCGATCCACAATCTGTTAGAAAGGTGCCTAATGGATAAGAAGCTCGTT
AGGATTGGGAAATGGTTTGTCCGACCCTACGAAAAGGATGAAAAGCCAGTCAACAAAAGTGAACATTTGT
CCTGTGCTTTACATTCTTTCTGCATGGAGAAAGTAATGTATGCACAAGTGTGGAGATTGCCAGACCA
GCCAATTTATTTGATCAATGAGGAGCATATACACATGGCTCAGTCTTACCTGCACCATTTCAAGTACTG
GTAAGTCTTATGGCTTAAATGGGACGCTAACAGGCCAAGCATACAAGATGTCAGACCCAGCCACTCGTA
AGTTGATTGAGGAATGGCAGTATTTCTACCCGATGGTGTCTAAAAAAGAAAGAAGAATCGAAAGAGGAAGA
CGAGTTGGGATATGATGATGATTTCCCTGTGGCAGTTGAAGTAATTGTTGGTGGTGTTCGGATGGTTTAC
CCTTCAGCATTGTTTTGATCTCTCAGAATGACATCCCGGTTCCAGAGTGTTCAGTGTGGCAGTGGAGGCC
ACATTGCAGTTGGGCAGCAAGGGCTTGGTAGTGTGAAGGACCCAAAGTAACTGTGGGATGCCTCTGACCCC
TCCCACCTCTCCAGAACAGGCTATCCTAGTGTGAGAGTGGAGGTATGCAGAGTGTGCCAGTCACTGGTT
TCCCAAGATGGAGGGATGATAACGATGCACAGTCCAAAGAGATCGGGGAAGATTCTCCAAAACCTCCACA
ATCATATGGTCCATCGAGTCTGGAAGGAATGCATCCTCAACAGAACCCAGTCCAAGAGGAGCCAAATGTC
AACTCCAACCTCTGAAGAAGAGCCTGCTAGCAATCCTGCTACTTGGGATTTTGTGGATCCAACCCAAAGA
GTCAGCTGTTCTTGTCCAGGCATAAGCTTTTAAAACGTTGTGCAGTGGGCCCAATCGACCTCCCACAG
TATCTCAACCAGGTTTCAGTGCAGGACCATCATCTTTCATCTTACCACCTCCTGCTTCTTAAAGCA
CAAAACAGCAGAAAGACAGGAAAAGGAGACAAGCTGCAAAAGAGACCCTTAATACCATTTCACCATAGG



[View online »](#)

CCCTCTGTGCGCGAAGAATTATGCATGGAGCAAGATACACCAGGACAGAACTAGGGTTGCGAGGGATAG
 ACTCCTCCTTAGAGGTGTCTAGCAGTAGGAAATATGATAAGCAAATGGCCGTGCCTTCCAGAAATACAAG
 CAAGCAAATGAATCTGAATCCTATGGATTACCTCATTCCCCTATATCCCCTCTGCCACCAACACTCAGC
 CCTCAGCCACGAGGTGAGAAACAGAGAGTTTGGACCCACCATCGGTCCCTGTGAATCCAGCCCTTATG
 GAAATGGACTAGAACTCCAGCAGTTGTCTACTCTGGATGACAGAACTGCCTCGTAGGCCAAAGACTGCC
 TCTCATGGCAGAGGTGAGCGAGACAGCCTTATATTGTGGGATTAGGCCCTCGAACCCGGAGTCATCAGAA
 AAGTGGTGGCATAGTTATCGTCTCCCACCAGTGATGCTGAGTTCAGGCCCTCCAGAGCTCCAGGGTG
 AGAGATGTGATGCCAAAAATGGAGGTAAACTCAGAGAGCACTGCATTGCAAAGACTCTTAGCACAACTAA
 CAAACGGTTTAAAATCTGGCAAGACAAACAGCCCCAGTTGCAGCCACTCCACTTCTTGACCCATTGCCCT
 CTATCACAAACCTGGAGACAGTTTGGGAGAAGTGAATGACCCATATACCTTTGAAGATGGTGACATAA
 AATACATCTTTACAGCCAACAAGAAATGCAAACAAGGGACGGAGAAAGATTCCCTGAAAAAGAATAAGTC
 AGAGGATGGATTTGGTACCAAGGATGCTACTACCCAGGTCAATCCAGCCGGTGCCTGATGGGAAAAAT
 GCCATGTCTATTTTCAGTCTGTCTACTAAAACAGATGTCGGCAGGATAATGCTGCTGCCAGAGCTGGCT
 CCAGTAGCCTTACACAGGTAACAGATTTGGCACCTTCCCTGCATGACTTAGACAACATCTTTGATAATTC
 TGATGACGACGAACTTGGGGCTGTATCACCTGCTCTGCGCTCATCAAAAATGCCTGCAGTTGGGACAGAA
 GACCGACCTCTTGGGAAGGATGGAAGAGCTGCTGTTCTTATCCACCAACAGTTGCAGACTTGCAAAGGA
 TGTTTTCCACTCCACCATCTTTGGAACAGCATCCTGCATTTTCTCCTGTGATGAATTATAAAGATGGGAT
 CAGCTCAGAGACAGTGACAGCATTAGGCATGATGGAGAGCCCTATGGTCAGTATGGTTTTCAACAACTC
 ACAGAAATCAAAAATGGAAGTGAAGATGGATTAGGAAGTCCCAAGCCCGAGGAAATTAAGGACTTTTCAT
 ATGTGCACAAAGTTCCATCCTTTCAACCTTTTGTGGGATCCTCCATGTTTGTCCACTGAAGATGTTGCC
 GAGCCATTGTTTGTACCTCTGAAGATACCTGATGCCTGTCTGTTTGGCCTTATGGGCAATTCCTCCT
 AAAATGAACTGCCCCATGCCCCCTGCAGCCACTTTCATTAGAGATGGCTACAATAACGTGCCTAGTG
 TGGGAGCCTAGCAGATCCAGACTATCTGAACACACCACAGATGAACACACCCGTGACCTGTGAACACGC
 TGCCCCAGCCAGCAATAGTGGGGCAGGAGTCTACCATCTCCAGCAACCCCTCGTCTCTGTCCCCACA
 CCACGAACCCCAAGGACCCCAAGAACTCCAGAGGTGGGGCAGTGCAGTGGTCAAGGGTCTGTTAAGT
 ATGATAGCACCGATCAAGGATCACCAGCCTCCACCCCTCTACTACACGGCCCTCAACTCTGTGGAGCC
 CGCCACCATGCAGCCAATCCCGAAGCCACAGCCTCTATGTTACCCTGATTCTCTCCGATTCCGTGATG
 AATATCTTTAAGACAGAACTTTGACAGCTGTTGCATCTGTGCCTGCAACATGAACATCAAAGGGGCGG
 ATGTGGGCTTTACATCCCCGATTCTTCCAATGAGGACCAGTACCCTGTACCTGTGGGTTTGTGCGAT
 TATGAACCGCAAATTTGGCTACAATTCAGGACTTCTTGAAGATGAGTTGGATATTTTGGGAAGAA
 TCTGATATTGGTCAAGGCTGCAGAGAGGCGTTAATGATGTGTCAGTCCACCTTCTTCTCAGGTGGAAG
 GAACCAAAAAACCCAGGAGCCACCCATGAGCCTTCTCCTCCTCCTCAGAAATCAACACACACAACCTTT
 TGCTTCACTGAATTTCTGGACTACATTTCTCTAACAATCGCCAACTTCTCCCTGTGTAAAGCTGGAGT
 TATGACCGGGTGAAGCAGATAAATGATTACTGGACGGAATGCTTTAATGCGTTGGAGCAGGGGCGGC
 AGTATGTGGATAACCCCACTGGTGGAAAAGTGGACGAAGCTCTGGTGAGAAGTGCCACTGTGCACCTTG
 GCCTCACAGCAATGTGCTGGACATCAGCATGCTCTCCTCCAGGATGTGGTTCGTATGCTGTTGTCCCTG
 CAGCCCTTTCTCAAGATGCCATCCAAAAGAAGCGCACGGGCAGGACCTGGGAGAATCCAGCATGTGC
 AAGGACCACTCACTTGGCAGCAGTTCCATAAAAATGGCAGGACGGGGAACCTACGGTTCGGAAGAACTCC
 TGAGCCGTTGCCATCCCCTCTGCTGGTAGGCTATGACAAGGATTTCTCACCATCTCGCCATTCTCC
 TTGCCGTTTTGGGAGAGGCTCTTGTGGACCCATATGGGGCCACCGTGATGTTGCCTATATTGTGGTGT
 GTCAGAAAAATGAGGCCTTGCTCGAAGGAGCCAAAACCTTTCTTCAAGGACTTGAGTGTGTATACGAGAT
 GTGTAGGCTTGGGAGCACAAGCCATCTGCAAAGTGTACGTGACGGGATCATGCGCGTGGGAAAAACT
 GTGGCACAGAAGCTGACAGATGAGCTTGTGAGTGTGTTAACCAGCCTTGGAGCGGCAGGAGAATG
 ACAATCATTCCAGACTCAAACCTTATGCGCAAGTTTGGCCCATCACCTAGCACCTTATTTAGCCACTCT
 GCAGCTTGATAGCAGCCTATTGATACCACCTAAATACCAGACCCACCAGCAGCAGCACAGGACAAGCT
 ACGCCAGGGAATGCTGGGCCCTTAGCTCCAATGGATCAGCAGTCCCCAGCTGGCAGTGCATTTAATC
 CCACCTCGAATAGTAGTCTACAATCCTGCAGCAAGTAGTTCTGCATCTGGTCTCTGTGCCACCGGT
 CTATCGTCTGCCTCTGCTCCTGGTATTAGCCAGATAAGCACTACCTTCTTTCAGGATTCAGTGGTAGT
 GTTGGAGGGCAGAACCCAGCACTGGGGCATTCTGCGGATAGAACGCAAGGGAACATAGGCTGTGGTG
 GAGACTGACCTGGGAGAGCTTCTCAGCCCTCACAGGATGGACAAGAGAGTGTACAGAAAGGGA
 GAGAATAGGAATCCACGGAGCCTGACTCTGCAGACAGCCATGCCACCCCTCCAGCTGTTGTCAATTTAC
 ATGGTGGACCCGTTACGTATGCTGCAGAGGAGGACTCCACTTCTGGAACTTTTGGCTGTTGAGCTTGA

TGCGCTGCTACACAGAAATGCTGGATAATTTACCTGAGCATATGAGAAATCTTTTCATTCTCCAGATTGT
GCCTTGCCAGTACATGCTGCAGACAATGAAGGATGAGCAAGTTTTCTACATTCAATACTTGAAGTCCATG
GCATTTTCAGTGTACTGCCAGTGCAGGCGACCACTGCCTACACAGATCCACATTAATCCCTCACGGGAT
TTGGGCTGCAGCCAGCATTGAGATGACCCTCAAGAACCCTGAGCGGCCAGCCCAATCCAGTTTACTC
CCCTCCCTTTATATTGGCCCAATCAAAGACAAGCAGACAGAGCTGGGAGAGACGTTTGGTGAGGCGAGC
CAGAAATACAATGTGCTCTTCGTGGGCTATTGTCTGTCTCACGACCAGCGCTGGCTTTTGGCTTCCGCA
CTGACCTCCATGGGGAATTATTAGAGACCTGCGTTGTAATATTGCTTTACCAAACAGGTCACGGAGGAG
TAAAGTATCTGCACGTAATAATTGGACTACAGAAGTTATGGGAGTGGTGCATAGGGATTGTCCAAATGACA
TCTCTACCCTGGAGAGTTGTAATCGGGCGACTTGGGCGTCTTGGCCATGGGGAGCTTAAAGATTGGAGTA
TCCTCCTTGGAGAATGTTCACTACAGACAATCAGCAAAAAGCTCAAGGATGTGTGCCGATGTGTGGAAT
CTCTGCCGAGACTCTCCTTCTATCCTTAGTGCCTGCCTGGTTGCCATGGAGCCCAGGGGTCTTTGTA
GTGATGCCAGATGCTGTCAATGGGCTCTGTTTTGGCCGAAGTACTGCACTGAACATGCAGTCATCTC
AGCTCAACACCCCTCAAGATGCTTCTTGTACACACATCTTGGTGTCCCAACATCATCAACCATCCAGGT
GGCTCCAGCCAACTACCCCAATGAAGATGGGTTTAGCCCCAACAAATGATGATATGTTTGTGACCTTCCA
TCCCAGATGATATGGACAATGATATTGGCATATTAATGACTGGGAACCTCCATTCTCTCCCAACTCTT
CCCCAGTACCCTCCCAGGCTCTCCTTCTGGAATTGGTGTGGGCTCTCACTTCCAGCATAGTCGGAGCCA
GGGTGAGCGTCTTCTTTCTAGAGAAGCACCAGAGGAGCTAAAGCAGCAGCCCCTGGCCCTTGGGTATTTT
GTATCAACTGCCAAAGCTGAGAACTTCCCAGTGGTTTTGGTCAATCGTGTCCCAGGCTCAAACCAGT
GCCCTCTCTTCTAAAGGCTTCGCTGCATCACCACATTTCACTAGCACAGACAGACGAACCTCTGCCTGC
CAGGAATTCTCAGCGGTTCCACACCCTTGGACTCCAAAACCACGTCGGATGTTTTAAGGTTTGTTTTG
GAGCAGTACAACGCTCTGTCTGGCTCACGTGCAATCCGGCCACCAGGACCGTACTTCTGCCTTCCCG
TCCACTTTGTGGTGCTCACTCAGTTGTACAATGCCATCATGAATATACTT

ACGCGTACGCGGCGCTCGAGCAGAACTCATCTCAGAAGAGGATCTGGCAGCAATGATATCCTGGATT
ACAAGGATGACGACGATAAGGTTTAA

Protein Sequence: >RC212375 representing NM_015335
 Red=Cloning site Green=Tags(s)

MTAAANWVANGASLEDCHSNLFLSLAELTGIKWRRYNYFGGHGDCGPIISAPAQDDPILLSFIRCLQANLLC
 VWRDVKPDCKELWIFWWGDEPNLVGVIHHELQVVEEGLWENGLSYECRTLLFKAIHNLRLERCLMDKNFV
 RIGKWFVRPYEKDEKPVNKSEHLSCAFTFFLHGESNVCTSVIEAQHQPIYLINEEHIIHMAQSSPAPFQVL
 VSPYGLNGLTGQAYKMSDPATRKLIEEWQYFYPMVLKKKKEESKEEDELGYDDDFPVAVEVIVGGVRMIV
 PSFVLI SQNDIPVPQSVASAGGHIAVGQQLGSKVDPNSCGMPLTPPTSPEQAILGESGMQSAASHLV
 SQDGGMITMHSKRSKIPPKLHNHMVHRVWKECILNRTQSKRSQMSTPTLEEEEPASNATWDFVDPTQR
 VSCSCSRHKLKRCAVGNRPPTVSPQGF SAGPSSSSSLPPPASSKHKT AERQEKGDQLQRPLIPFHHR
 PSVAEELCMEQDTPGQKLGLAGIDSSLEVSSSRKYDKQMAVPSRNTSKQMNLPMDSPHSPISPLPPTLS
 PQPRGQETESLDPPSVPVNPALYGNLELQQLSTLDDRTVLVGQRLPLMAEVSETALYCGIRPSNPESSE
 KWWHSYRLLPPSDDAEFRPPELQGERCDAKMEVNSESTALQRLLAQPNKRFKIWQDKQPQLQPLHFLDPLP
 LSQQPGDSLGEVNDPYTFEDGDIKYIFTANKKCKQGTEKDSLKKNKSEDFGKTDVTTPGHSTVPDQGN
 AMSIFSSATKTDVRQDNAAGRAGSSSLTQVTDLAPSLHDLNIFDNSDDDELGAVSPALRSSKMPAVGTE
 DRPLGKDGRAAVPYPTVADLQRMFPTPPSLEQHPAFSPVMNYKDGISSETVTALGMMESPMVSMVSTQL
 TEFKMEVEDGLGSPKPEEIKDFSYVHKVPSFQPFVGSMSFAPLKMPLSHCLLPLKIPDAACFRPSWAIPP
 KIEQLPMPAATFIRDGYNNVPSVGLADPDYLNTPQMNTPVTLNSAAPASNSGAGVLPSPATPRFSVPT
 PRTPTPTPTPRGGTASGQGSVKYDSTDQGSPASTPSTTRPLNSVEPATMQPIPEAHSLYVTLILSDSVM
 NIFKDRNFDSCCICACNMNIKADVGLYIPDSSNEDQYRCTCGFSAIMNRKLGYNLFLFLEDELDFGKN
 SDIGQAAERLLMMCQSTFLPQVEGTTKQPPEPISLLLLLQNHQTPFASLNFLDYISSNNRQTLPCVSW
 YDRVQADNNDYWTECFNALEQGRQYVDNPTGGKVDLVRSAVHSHWPHSNVLDISMLSSQDVVRMLLSL
 QPFLQDAIQKRTGRTWENIQHVQGPLTWQQFHKMAGRGTGSEESPEPLPIPTLLVGYDKDFLTI SPFS
 LPFWERLLLDPYGGHRDVAYIVVCPENEALLEGAKTFFRDL SAVYEMCRLGQHKPICKVLRDGMIRVGT
 VAQKLTDELVSEWFPWQSGEENDNHSRLKLYAQVCRHHLAPYLATLQLDSSLLIPPKYQTPAAAQQA
 TPGNAGPLAPNGSAAPPAGSAFNPTSNSSSTNPAASSASGSSVPPVSSASAPGISQISTTSSSGFSGS
 VGGQNPSTGGISADRTQGNIGCGGDTDPGQSSSQPSQDQGESVTERERIGIPTEDSADSHAHPPAVVIY
 MVDPFYAAEEDSTSGNFWLLSLMRCYTEMLDNLPEHMRNSFILQIVPCQYMLQTMKDEQVFIQYLKSM
 AFVYQCRRPLPTQIHIKSLTGFPAASIEMLTKNPERPSIQLYSPFFILAPIKDKQTELGETFGEAS
 QKYNVLFVGYCLSHDQRWLLASCTDLHGELLETCVVNIALPNRSRRSKVSARKIGLQKLWEWICIGIVQMT
 SLPWRVVI GRLGRLGHGELKDWISILLGECSLQTI SKKLDVCRMCGISAADSPSILSACL VAMEPQGSFV
 VMPDAVTMGSVFGRSTALNMQSSQLNTPQDASCTHILVFPTSSTIQVAPANYPNEDGFSPNDDMFVPLP
 FPDDMDNDIGILMTGNLHSSPNSPVPSPGSPSGIGVGSHFQHSRSQGERLLSREAPEELKQQPLALGYF
 VSTAKAENLPQWFSSCPQAQNCPLFLKASLHHHISVAQTDELLPARNSQRVPHPLDSKTTSDVLRFLV
 EQYNALSWLTCNPATQDRTSCLPVHFVLLTQLYNAIMNIL

TRTRPLEQKLI SEEDLAANDILDYKDDDDKV

Chromatograms: https://cdn.origene.com/chromatograms/mk8026_b08.zip

Restriction Sites: SgfI-MluI

Cloning Scheme:


ACCN: NM_015335

ORF Size: 6630 bp

OTI Disclaimer: The molecular sequence of this clone aligns with the gene accession number as a point of reference only. However, individual transcript sequences of the same gene can differ through naturally occurring variations (e.g. polymorphisms), each with its own valid existence. This clone is substantially in agreement with the reference, but a complete review of all prevailing variants is recommended prior to use. [More info](#)

OTI Annotation: This clone was engineered to express the complete ORF with an expression tag. Expression varies depending on the nature of the gene.

Components: The ORF clone is ion-exchange column purified and shipped in a 2D barcoded Matrix tube containing 10ug of transfection-ready, dried plasmid DNA (reconstitute with 100 ul of water).

- Reconstitution Method:**
1. Centrifuge at 5,000xg for 5min.
 2. Carefully open the tube and add 100ul of sterile water to dissolve the DNA.
 3. Close the tube and incubate for 10 minutes at room temperature.
 4. Briefly vortex the tube and then do a quick spin (less than 5000xg) to concentrate the liquid at the bottom.
 5. Store the suspended plasmid at -20°C. The DNA is stable for at least one year from date of shipping when stored at -20°C.

RefSeq: [NM_015335.5](#)

RefSeq Size: 9546 bp

RefSeq ORF: 6633 bp

Locus ID: 23389

UniProt ID: [Q71F56](#)

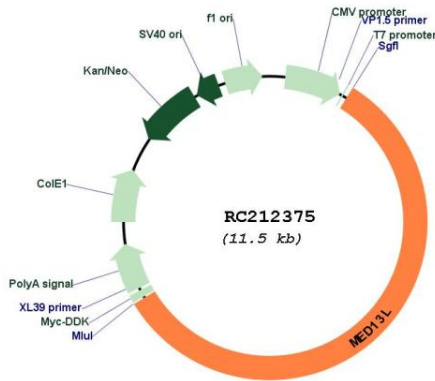
Cytogenetics: 12q24.21

Protein Families: Druggable Genome

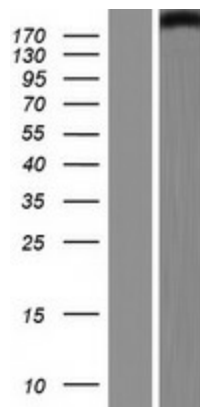
MW: 242.4 kDa

Gene Summary: The protein encoded by this gene is a subunit of the Mediator complex, a large complex of proteins that functions as a transcriptional coactivator for most RNA polymerase II-transcribed genes. The encoded protein is involved in early development of the heart and brain. Defects in this gene are a cause of transposition of the great arteries, dextro-looped (DTGA).[provided by RefSeq, Jul 2010]

Product images:



Circular map for RC212375



Western blot validation of overexpression lysate (Cat# [LY414630]) using anti-DDK antibody (Cat# [TA50011-100]). Left: Cell lysates from untransfected HEK293T cells; Right: Cell lysates from HEK293T cells transfected with RC212375 using transfection reagent MegaTran 2.0 (Cat# [TT210002]).