

Product datasheet for RC212373

SYT homolog 1 (SS18L1) (NM_198935) Human Tagged ORF Clone

Product data:

Product Type:	Expression Plasmids
Product Name:	SYT homolog 1 (SS18L1) (NM_198935) Human Tagged ORF Clone
Tag:	Myc-DDK
Symbol:	SYT homolog 1
Synonyms:	CREST; LP2261
Mammalian Cell Selection:	Neomycin
Vector:	pCMV6-Entry (PS100001)
E. coli Selection:	Kanamycin (25 ug/mL)
ORF Nucleotide Sequence:	>RC212373 representing NM_198935 Red=Cloning site Blue=ORF Green=Tags(s)

TTTTGTAATACGACTCACTATAGGGCGGCCGGAATTCGTCGACTGGATCCGGTACCGAGGAGATCTGCC
GCC**CGATCGCC**

ATGTCCGTGGCCTTCGCGTCTGCCCGCCAAGAGGCAAAGGGGAGGTTACGCAGCAAACCATCCAGAAGA
TGCTGGACGAGAACCACCACCTGATCCAGTGCATCCTGGAGTACCAGAGCAAGGGCAAGCGCCGAGTG
CACGCAGTACCAGCAGATCCTGCACCGAACCTGGTATACCTGGCCACGATCGCAGACTCCAACCAGAAC
ATGCAGTCCCTGCTTCTGCCCGCCACGCAGAACATGAACCTGGGCCCTGGAGCCTGACTCAGAGCG
GCTCCAGCCAGGGCCTGACTCTCAGGGCAGCCTGAGTGACGCCATCAGCACGGCCTGCCACCCTCCTC
CCTCCTGCAGGGCCAGATTGGCAACGGGCCGAGCCACGTGTCCATGCAGCAGACGGCCCTAACACGCTG
CCCACCACCTCCATGAGCATCTCTGGGCCCGGCTACAGCCACGCGGGACCCGCTCGCAGGGCGTCCCA
TGCAGGGGCAAGGCACCATCGGCAACTACGTGTCTCGGACCAACATCAACATGCAGTCCAACCCAGTCTC
CATGATACAGCAGCAGGGCGCCACGTGCGACTACAGCTCGGCGCAGGGCGGCAGCCAGCACTACCAGGGC
CAGTCGTCCATCGCCATGATGGGCGAGGGCAGCCAGGGGAGCAGCATGATGGGCGAGCGGCCATGGCGC
CCTACCGGCCCTCCAGCAAGGCTCTTCCAGCAGTACCTGGGCCAGGAGGAGTACTATGGCGAGCAGTA
CAGCCACAGCCAGGGCGCCGCGGAGCCATGGGCCAGCAGTACTACCCCGACGGCCATGGCGATTACGCC
TACCAGCAGTCACTCTACACGGAGCAGAGCTACGACCGTCTTTCGAGGAGTCCACGCAGCACTACTATG
AGGGGGAAACTCCAGTACAGCCAGCAGCAGGCGGGTACCAGCAGGGTGCCGCGCAGCAGCAGAGCGTA
CTCCAGCAGCAGTACCCAGCCAGCAGAGCTACCCCGGGCAGCAGCAGGGCTACGGGTCTGCCAGGGA
GCCCGTCAAGTACCCGGCTACCAGCAAGGCCAGCAGTACGGAAGCTACCGAGCACCAGCAG
CAGCGCGTCTGCCAGCAGCAGCGGCCCTACGGCTATGAACAGGGCCAGTATGGAATTACCAGCAG

ACGCGTACGCGGCCGCTCGAGCAGAACTCATCTCAGAAGAGGATCTGGCAGCAATGATATCCTGGATT
ACAAGGATGACGACGATAAGGTTTAA



[View online »](#)

Protein Sequence: >RC212373 representing NM_198935
Red=Cloning site Green=Tags(s)

MSVAFASARPRGKGEVTQQTIQKMLDENHHLIQCILEYQSKGKTAECTQYQQILHRNLVYLATIADSNQN
 MQSLLPAPPTQNMNLGPGALTQSGSSQGLHSQGLSDAISTGLPPSSLLQGQIGNGP SHVSMQQTAPNTL
 PTTSMISGPGYSHAGPASQGVPMQGGTIGNYVSRTNINMQSNPVSMIQQQAATSHYSSAQGGSQHYQG
 QSSIAMMGQGSQGSMMGQRPMPAPYRPSQQGSSQQYLGQEEYYGEQYSHSQGAAEPMGQQYYPDGHGDYA
 YQQSSYTEQSYDRSFEESTQHYYEGGNSQYSQQQAGYQQGAAQQQTYSSQQYPSQQSYPGQQQGYGSAQG
 APSQYPGYQQGGQQYGSYRAPQTAPSAQQQRPYGYEQGQYGNYYQQ

TRTRPLEQKLISEEDLAANDILDYKDDDDKV

Chromatograms: https://cdn.origene.com/chromatograms/mk6771_a02.zip

Restriction Sites: SgfI-MluI

Cloning Scheme:



* The last codon before the Stop codon of the ORF

ACCN: NM_198935

ORF Size: 1188 bp

OTI Disclaimer: The molecular sequence of this clone aligns with the gene accession number as a point of reference only. However, individual transcript sequences of the same gene can differ through naturally occurring variations (e.g. polymorphisms), each with its own valid existence. This clone is substantially in agreement with the reference, but a complete review of all prevailing variants is recommended prior to use. [More info](#)

OTI Annotation: This clone was engineered to express the complete ORF with an expression tag. Expression varies depending on the nature of the gene.

Components: The ORF clone is ion-exchange column purified and shipped in a 2D barcoded Matrix tube containing 10ug of transfection-ready, dried plasmid DNA (reconstitute with 100 ul of water).

Reconstitution Method:

1. Centrifuge at 5,000xg for 5min.
2. Carefully open the tube and add 100ul of sterile water to dissolve the DNA.
3. Close the tube and incubate for 10 minutes at room temperature.
4. Briefly vortex the tube and then do a quick spin (less than 5000xg) to concentrate the liquid at the bottom.
5. Store the suspended plasmid at -20°C. The DNA is stable for at least one year from date of shipping when stored at -20°C.

RefSeq: [NM_198935.3](#)

RefSeq Size: 4566 bp

RefSeq ORF: 1191 bp

Locus ID: 26039

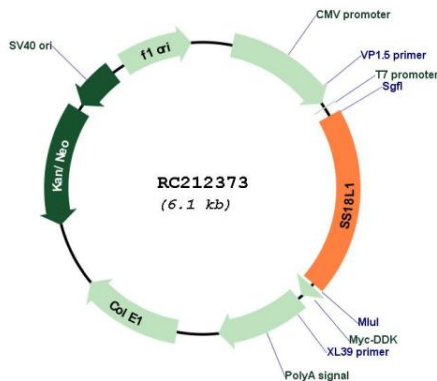
UniProt ID: [O75177](#)

Cytogenetics: 20q13.33

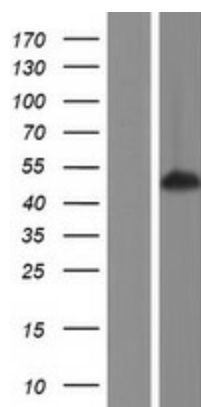
MW: 42.8 kDa

Gene Summary: This gene encodes a calcium-responsive transactivator which is an essential subunit of a neuron-specific chromatin-remodeling complex. The structure of this gene is similar to that of the SS18 gene. Mutations in this gene are involved in amyotrophic lateral sclerosis (ALS). Alternatively spliced transcript variants have been found for this gene. [provided by RefSeq, Sep 2014]

Product images:



Circular map for RC212373



Western blot validation of overexpression lysate (Cat# [LY404653]) using anti-DDK antibody (Cat# [TA50011-100]). Left: Cell lysates from untransfected HEK293T cells; Right: Cell lysates from HEK293T cells transfected with RC212373 using transfection reagent MegaTran 2.0 (Cat# [TT210002]).