

Product datasheet for RC212366

SMC4 (NM_001002800) Human Tagged ORF Clone

Product data:

Product Type:	Expression Plasmids
Product Name:	SMC4 (NM_001002800) Human Tagged ORF Clone
Tag:	Myc-DDK
Symbol:	SMC4
Synonyms:	CAP-C; CAPC; SMC-4; SMC4L1
Mammalian Cell Selection:	Neomycin
Vector:	pCMV6-Entry (PS100001)
E. coli Selection:	Kanamycin (25 ug/mL)
ORF Nucleotide Sequence:	>RC212366 representing NM_001002800 Red=Cloning site Blue=ORF Green=Tags(s)

TTTTGTAATACGACTCACTATAGGGCGGCCGGAATTCGTCGACTGGATCCGGTACCGAGGAGATCTGCCGCCGCGATCGCC

ATGCCCGTAAAGGCACCCAGCCCTCCACTGCCCGGCGCAGAGAGGAAGGGCCGCCGCCGCTCCCCTGACGGCGCCAGCAGCGACGCGGAGCCTGAGCCGCGTCCGGCCGCACGGAGAGCCAGCCACCGCCGAGAGACTGCAAGTGAAGTGGATAATAGAAGTTTGAAGAGATTTGAACAGCATTCTCTCCCGCCCTCCAGCAATGACCAATGAAGCTGGAGCTCCTCGGCTTATGATAACTCATATTGTAACCAGAACTTCAATCCTATGCTGGGGAGAAAATCTGGGACCTTCCATAAGCGCTTTTCTGTATTATCGGGCCAAATGGCAGTGGCAATCCAATGTTATTGATTCTATGCTTTTTGTGTTGGCTATCGAGCAGAAAAAATAGATCTAAAAACTCTCAGTATTAATACATAATTCTGATGAACACAAGGACATTCAGAGTTGTACAGTAGAAGTTCATTTCAAAAGATAATTGATAAGGAAGGGGATGATTATGAAGTCATTCTAACAGTAATTTCTATGTATCCAGAACGGCTGCAGAGATAACTTCTGTCTATCACATAAGTGAAAAGAAAAAGACATTTAAGGATGTTGGAATCTTCTCGAAGCCATGGAATTGACTTGGACCATAATAGATTTTTAATTTACAGGGTGAAGTTGAACAAATTGCTATGATGAAACAAAAGGCCAGACTGAACACGATGAGGGTATGCTTGAATATTTAGAAGATATAATTGGTTGTGGACGGCTAAATGAACCTATTAAGTCTTGTGTGCGGAGAGTTGAAATATTAATGAACACAGAGAGAGAAGTTAAACAGGGTAAAGATGGTGGAAAAGGAAAAGGATGCCTTAGAAGGAGAGAAAAACA TAGCTATCGAATTTCTTACCTTGGAAAATGAAATATTTAGAAAAAGAATCATGTTTGTCAATATTATATTATGAGTTGCAGAAAACGAATTGCTGAAATGAAAACCTCAAAAAGGAAAAAATTCATGAAGATACCAAAGAAATTAATGAGAAGACAAATACTATCAAAATGAAATGAAAGCTAAGAATAAAGATGTAAGATACAGAAAAGAAAAGTGAATAAAATTACAAAATTTATTGAGGAGAATAAAGAAAAATTTACACAGCTAGATTTGGAAGATGTTCAAGTTAGAGAAAAGTTAAAACATGCCACGAGTAAAGCCAAAAAAGTGGAGAAAACAACTTCAAAAA GATAAAGAAAAGTTGAAGAATTTAAAAGTATACCTGCCAAGAGTAACAATATCATTAAATGAAACAACAACAGAAAACAAATGCCCTCGAGAAGGAAAAAGAGAAAAGAAAAAATTAAGGAAGTTATGGATAGCCTTAAACAGGAAACACAAGGCTTCAGAAAAGAAAAGAAAGTCGAGAGAAAAGAACTTATGGGTTTCAGCAAA



[View online »](#)

TCGGTAAATGAAGCACGTTCAAAGATGGATGTAGCCCAGTCAGAACTTGATATCTATCTCAGTCGTCATA
ATACTGCAGTGTCTCAATTAAGGCTAAGGAAGCTCTAATTGCAGCTTCTGAGACTCTCAAAGAAAAG
GAAAGCTGCAATCAGAGATATAGAAGGAAAACCTCCCTCAAAGTAAACAAGAAATTAAGGAGAAAAGAAAA
GAACTTCAAAAACCTTACACAAGAAGAAACAACTTTAAAAGTTTGGTTCATGATCTCTTTCAAAAAGTTG
AAGAAGCAAAGAGCTCATTAGCAATGAATCGAAGTAGGGGAAAGTCCTTGATGCAATAATCAAGAAAA
AAAATCTGGCAGGATCCAGGAATATATGGAAGATTGGGGGACTTAGGAGCCATTGATGAAAAATACGAC
GTGGCTATATCATCTGTTGTCATGCACCTGGACTACATTGTTGTTGATTCTATTGATATAGCCCAAGAAT
GTGTAAACTTCCTTAAAAGACAAAATATTGGAGTTGCAACCTTTATAGGTTTAGATAAAGATGGCTGTATG
GGCAGAAAAGATGACCGAAATCAAACCTCTGAAAATACTCCTCGTTTATTTGATTTAGTAAAAGTAAAA
GATGAGAAAATTCGCAAGCTTTTTATTTGCTTTACGAGATACCTTAGTAGCTGACAACTTGGATCAAG
CCACAAGAGTAGCATATCAAAGATAGAAGATGGAGAGTGGTAACTTTACAGGGACAAATCATAGAACA
GTCAGGTACAATGACTGGTGGTGAAGCAAAGTAAAGAAAGAAATGGGTTCTCACTTGTATTGAA
ATCTCTGAAGAAGAGGTAACAAAATGGAATCACAGTTGCAAAACGACTCTAAAAAGCAATGCAATCC
AAGAACAGAAAAGTACAACCTGAAGAAAGAGTAGTTAAGTTACGGCATAGTGAACGAGAAAAGAGGAACAC
ACTAGAAAATTTACTGCAAGCATCCAGCGTTTAAATAGAGCAAGAAGAATATTTGAATGTCCAAGTTAAG
GAACCTGAAGCTAATGTACTTGCTACAGCCCTGACAAAAAAAAGCAGAAATTGCTAGAAGAAAACGTTA
GTGCTTTCAAAAACAGAATATGATGCTGTGGCTGAGAAAAGCTGGTAAAGTAGAAGCTGAGGTTAAACGCTT
ACACAATACCATCGTAGAAAATCAATAATCATAAATCAAGGCCCAACAAGACAACTTGATAAAAATAAT
AAGCAATTAGATGAATGTGCTTCTGCTATTACTAAAGCCCAAGTGAATCAAGACTGCTGACAGAAAAC
TTCAAAGGCACAAGACTCTGTCTTGCCTACAGAGAAAAGAAAATAAAGATACTGAGAAAGAGGTGGATGA
CCTAACAGCAGAGCTGAAAAGTCTTGAGGACAAAGCAGCAGAGGTCGTAAGAATACAAATGCTGCAGAG
GAATCCTTACCAGAGATCCAGAAAAGAACATCGCAATCTGCTTCAAGAATTAAGGTTATTCAAGAAAATG
AACATGCTCTTCAAAAAGATGCACTTAGTATTAAGTTGAAACTGAACAAATAGATGGTCACATTGCTGA
ACATAAATCTAAAATAAAATATTGGCACAAAGAGATTTCAAAAATATCACTGCATCCTATAGAAGATAAT
CCTATTGAAGAGATTTCCGGTCTAAGCCAGAGGATCTTGAAGCGATCAAGAATCCAGATTCTATAACAA
ATCAAATGCACTTTTGAAGCCCGGTGTATGAAATGAAACCAAACCTCGGTGCCATCGCAGAGTATAA
AAAGAAGGAAGAATTGTATTTGCAACGGGTAGCAGAATTGGACAAAATTACTTATGAAAGAGACAGTTTT
AGACAGGCATATGAAGATCTTCGAAAACAAGGCTTAATGAATTTATGGCAGTTTTTATATAATAACAA
ATAAATTAAGGAAAATACCAAATGCTTACTTTGGGAGGGGACGCCGAACCTCGAGCTTGTAGACAGCTT
GGATCCTTTCTCTGAAGGAATCATGTTCCAGTGTTCGACCACCTAAGAAAAGTTGGAAAAAGATCTTCAAC
CTTTCCGGGAGGAGAGAAAACACTTAGTTCATTGGCTTTAGTATTTGCTCTTCACTACTACAAGCCCACTC
CCCTTACTTTCATGGATGAGATTGATGCAGCCCTTGATTTTAAAATGTGTCCATTGTTGCATTTTATAT
ATATGAACAAAACAAAATGCACAGTTCATAAATTTCTCTCGAAAATAATATGTTTGAGATTTCCGGAT
AGACTTATTGGAATTTACAAGACATACAACATAACAAAAGTGTGCTGTAATCCAAAAGAAATTCAT
CTAAGGGACTTTGT

ACGCGTACGCGGCCGCTCGAGCAGAACTCATCTCAGAAGAGGATCTGGCAGCAATGATATCCTGGATT
ACAAGGATGACGACGATAAGGTTTAA

Protein Sequence: >RC212366 representing NM_001002800
 Red=Cloning site Green=Tags(s)

```
MPRKGTPSTARREEGPPPPSPDGASSDAEPEPPSGRTESPATAAETASEELDNRSLLEEILNSIPPPP
PAMTNEAGAPRLMITHIVNQNFKSYAGEKILGPFHKRFSCIIGPNGSGKSNVIDSMLFVFGYRAQKIRSK
KLSVLIHNSDEHKDIQSCTVEVHFQKIIDKEGDYEVIPNSNFYVSRACRDNISVYHISGKKTKFDVG
NLLRSHGIDLHDNRFLILQGEVEQIAMMKPKGQTEHDEGMLEYLEDIIGCGRLNEPIKVLRRVEILNEH
RGEKLNVRKMKVEKDALEGEKNIAIEFLTLENEIFRKKNHVCQYYIYELQKRIAEMETQKEKIHEDTKE
INEKSNILSNEMKAKNKDVKDTEKLNKITKFIENKEKFTQLDLEDVQVREKLNKATSKAKKLEKQLQK
DKEKVEEFKSIIPAKSNININETTTRNNALEKEKEKEEKKLKEVMSLQKQETQGLQKEKESREKELMGFSK
SVNEARSKMDVAQSELDIYLSRHNTAVSQTAKAKEALIASETLKERKAAIRDIEGKLPQTEQELKEKEK
ELQKLTQEETNFKSLVHDLFQKVEEAKSSLAMNRSRGKVLDAIIQEKKSGRIPGIYGRGLDGAIDEKYD
VAISSCCHALDYIVVDSIDIAQECVNLKRONIGVATF IGLDKMAVWAKKMTIEIQTPEPNTPRFLDLVKVK
DEKIRQAFYFALRDTLVADNLDQATRVAYQKDRRWRVVTLQGGIIEEQSGTMTGGGSKVMKGRMGSSLVIE
ISEEEVNMESQLQNDSSKAMQIQEQVQLEERVVVKLRHSEREMRNTLEKFTASIQRLIEQEEYLVNQVK
ELEANVLATAPDKKKQKLLLEENVSFAFKTEYDAVAEKAGV EAEVKRLHNTIVEINNHLKKAQQDKLDKIN
KQLDECASAITKAQVAIKTADRNLQKAQDQSVLRTKEIKDTEKEVDDLT AELKSLEDKAAEVVKNNTAAE
ESLPEIQKEHRNLLQELKVIQENEHALQKDALS IKLLEQIDGHIAEHNSKIKYWHKEISKISLHPIEDN
PIEEISVLSPEDLEAIKNPDSITNQIALLEARCHMKNLGAIAEYKKEELYLQRVAELDKITYERDSF
RQAYEDLRKQRLNEFMAGFYIITNKLKENYQML TGGDAEELVDSLDPFSEGIMFSVPRPKKSWKKIFN
LSGGEKTLSSLALVFALHHYKPTPL YFMDEIDAALDFKNVSIVAFYIYEQTKNAQFIIISLRNNMFEISD
RLIGIYKTYNITKSVAVNPKEIASKGLC
```

TRTRPLEQKLISEEDLAANDILDYKDDDDKV

Chromatograms: https://cdn.origene.com/chromatograms/mk8026_b11.zip

Restriction Sites: SgfI-MluI

Cloning Scheme:

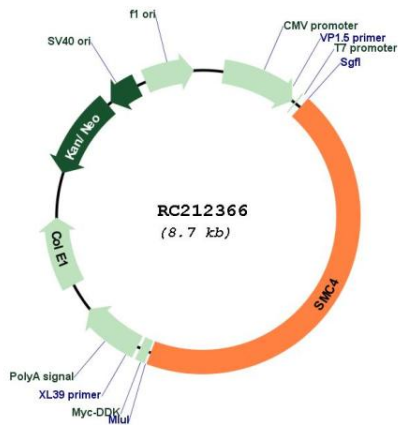


ACCN: NM_001002800

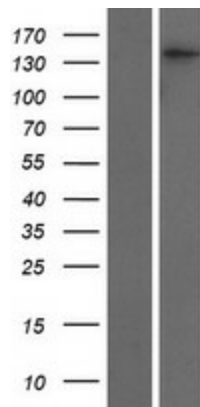
ORF Size: 3864 bp

OTI Disclaimer:	The molecular sequence of this clone aligns with the gene accession number as a point of reference only. However, individual transcript sequences of the same gene can differ through naturally occurring variations (e.g. polymorphisms), each with its own valid existence. This clone is substantially in agreement with the reference, but a complete review of all prevailing variants is recommended prior to use. More info
OTI Annotation:	This clone was engineered to express the complete ORF with an expression tag. Expression varies depending on the nature of the gene.
Components:	The ORF clone is ion-exchange column purified and shipped in a 2D barcoded Matrix tube containing 10ug of transfection-ready, dried plasmid DNA (reconstitute with 100 ul of water).
Reconstitution Method:	<ol style="list-style-type: none">1. Centrifuge at 5,000xg for 5min.2. Carefully open the tube and add 100ul of sterile water to dissolve the DNA.3. Close the tube and incubate for 10 minutes at room temperature.4. Briefly vortex the tube and then do a quick spin (less than 5000xg) to concentrate the liquid at the bottom.5. Store the suspended plasmid at -20°C. The DNA is stable for at least one year from date of shipping when stored at -20°C.
RefSeq:	NM_001002800.3
RefSeq Size:	5142 bp
RefSeq ORF:	3867 bp
Locus ID:	10051
UniProt ID:	Q9NTJ3
Cytogenetics:	3q25.33
MW:	147 kDa
Gene Summary:	This gene belongs to the 'structural maintenance of chromosomes' (SMC) gene family. Members of this gene family play a role in two changes in chromosome structure during mitotic segregation of chromosomes- chromosome condensation and sister chromatid cohesion. The protein encoded by this gene is likely a subunit of the 13S condensin complex, which is involved in chromosome condensation. A pseudogene related to this gene is located on chromosome 2. [provided by RefSeq, Jun 2016]

Product images:



Circular map for RC212366



Western blot validation of overexpression lysate (Cat# [LY424157]) using anti-DDK antibody (Cat# [TA50011-100]). Left: Cell lysates from untransfected HEK293T cells; Right: Cell lysates from HEK293T cells transfected with RC212366 using transfection reagent MegaTran 2.0 (Cat# [TT210002]).