

## Product datasheet for RC212360

### SPRYD3 (NM\_032840) Human Tagged ORF Clone

#### Product data:

Product Type:	Expression Plasmids
Product Name:	SPRYD3 (NM_032840) Human Tagged ORF Clone
Tag:	Myc-DDK
Symbol:	SPRYD3
Mammalian Cell Selection:	Neomycin
Vector:	pCMV6-Entry (PS100001)
E. coli Selection:	Kanamycin (25 ug/mL)
ORF Nucleotide Sequence:	>RC212360 representing NM_032840 Red=Cloning site Blue=ORF Green=Tags(s)

TTTTGTAATACGACTCACTATAGGGCGGCCGGGAATTCGTCGACTGGATCCGGTACCGAGGAGATCTGCC  
GCC**CGATCGCC**

ATGAGGAGGACGCGGCCGCCCGGTTTGTTCATGAACAAGATGGATGACCTCAACCTGCACTACCGGT  
TTCTGAATTGGCGCCGGCGGATCCGGGAGATTCGAGAGGTCCGAGCTTCCGATATCAGGAGAGGTTCAA  
ACATATCCTTGTAGATGGAGATACTTTAAGTTATCATGGAAACTCTGGTGAAGTTGGCTGCTACGTGGCT  
TCTCGACCCTGACCAAGGACAGCAATTATTTGAGGTGTCTATTGTGGACAGTGGAGTCCGGGGCACCA  
TTGCTGTGGGCTGGTCCCTCAGTACTACAGCTTGGATCACCAGCCTGGCTGGTTGCCTGACTCTGTAGC  
CTACCATGCTGATGATGGCAAGCTGTACAATGGCCGAGCCAAGGGCCGCCAGTTGGGTCAAAGTGCAC  
TCCGGGGACCGGATTGGCTGTGGCATTGAGCCTGTGTCTTTGATGTGCAGACCGCCAGATCTTCTTCA  
CCAAAAATGGGAAGCGGGTGGGCTCTACCATCATGCCATGTCCCAGATGGACTGTTCCCAGCAGTGGG  
CATGCACTCCCTGGGTGAGGAGGTGCGGCTGCACCTCAACGCTGAGCTGGGCCGTGAGGACGACAGCGTC  
ATGATGGTGGACAGTTACGAGGATGAATGGGGCCGGCTACATGATGTGAGTCTGTGGGACTCTGCTGG  
AGTACTTAGGGAAGGGCAAAGCATCGTGGATGTGGGCTGGCCAGGCCCGGCACCCACTCAGCACCCG  
CAGCCACTACTTCGAGGTGGAGATCGTGGACCCTGGAGAGAAATGCTACATCGCCCTGGGCTGGCACGG  
AAGGACTATCCCAAGAACAGGCACCCTGGCTGGAGCAGAGGGTCTGTGGCTTATCATGCAGACGATGGGA  
AGATCTTCCATGGCAGTGGTGTGGGGACCCCTTTGGGCCACGCTGTACAAAGGGGACATCATGGGCTG  
TGGAAATCATGTTCCCGGGGACTACATTTGGACAGTGGGGGGACAGTATGACAGTTGTGACACAGTG  
ATCCTGTCTCCGACTGCCCGGGCCGTCCGGAACGTGCGGAATGTCATGTACCTGCACCAGGAAGGGGAAG  
AGGAAGAGGAGGAAGAGGAAGAGGAGGATGGGAAGAGATAGAGCCGGAGCATGAGGGCAGGAAGGT  
GGTGGTTTTCTCACTCGGAATGGCAAGATCATTGGGAAGAAGGATGCTGTTGTTCTTCTGGAGGCTTC  
TTCCCCACCATTGAATGCTGAGCTGCGGGGAGAAAGTCAAAGTATGATCTGCACCCTTGAGTGCC

**ACGCGT**ACGCGGCCGCTCGAGCAGAAACTCATCTCAGAAGAGGATCTGGCAGCAAATGATATCTGGATT  
ACAAGGATGACGACGATAAGGTTTAA



[View online »](#)

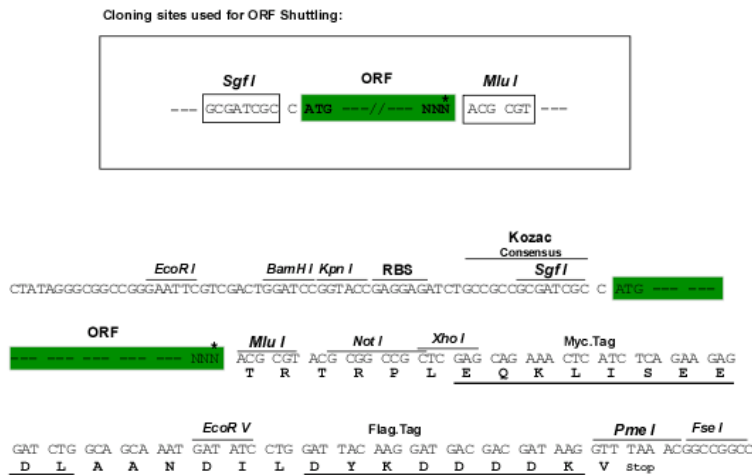
**Protein Sequence:** >RC212360 representing NM\_032840  
Red=Cloning site Green=Tags(s)

MRRTRRPRFVLMNKMDDLNLHYRFLNWRRIREIREVRAFRYQERFKHILVDGDTLSYHGNSGEVGCYVA  
 SRPLTKDSNYFEVSIVDSGVRGTIAVGLVPQYSLDHQPGWLPDSVAYHADDGKLYNGRAKGRQFGSKCN  
 SGDRIGCGIEPVSFVQTAQIFFTKNGKRVGSTIMPMPDGLFPAVGMHSLGEEVRLHLNAELGREDDSV  
 MMVDSYEDEWGRLLHDVRCVGTLLLEYLKPKSIVDVGLAQAARHPLSTRSHYFEVEIVDPGEKCYIALGLAR  
 KDYPKNRHPGWSRGVAYHADDGKIFHSGVGDPPFGPRCYKGDIMGCGIMFPRDYILDSEGDSDSDCTV  
 ILSPTARAVRNVNMYLHQEGEEEEEEEEEDGEEIEPEHEGRKVVVFFTRNGKIIGKKDAVVPSSGGF  
 FPTIGMLSCGEKVKVDLHPLSG

TRTRPLEQKLISEEDLAANDILDYKDDDDKV

**Restriction Sites:** SgfI-MluI

**Cloning Scheme:**



\* The last codon before the Stop codon of the ORF

**ACCN:** NM\_032840

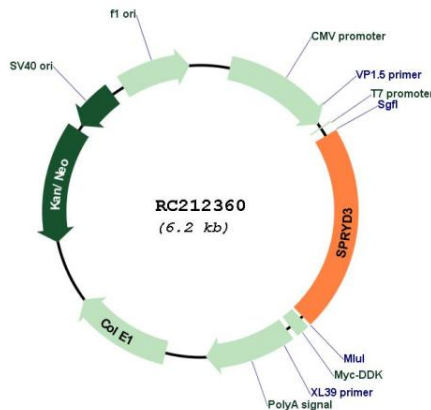
**ORF Size:** 1326 bp

**OTI Disclaimer:** Due to the inherent nature of this plasmid, standard methods to replicate additional amounts of DNA in E. coli are highly likely to result in mutations and/or rearrangements. Therefore, OriGene does not guarantee the capability to replicate this plasmid DNA. Additional amounts of DNA can be purchased from OriGene with batch-specific, full-sequence verification at a reduced cost. Please contact our customer care team at [custsupport@origene.com](mailto:custsupport@origene.com) or by calling 301.340.3188 option 3 for pricing and delivery.

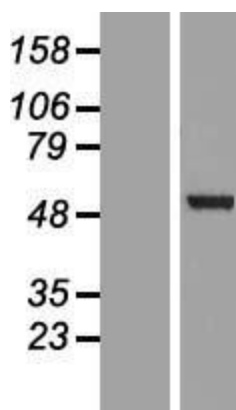
The molecular sequence of this clone aligns with the gene accession number as a point of reference only. However, individual transcript sequences of the same gene can differ through naturally occurring variations (e.g. polymorphisms), each with its own valid existence. This clone is substantially in agreement with the reference, but a complete review of all prevailing variants is recommended prior to use. [More info](#)

<b>OTI Annotation:</b>	This clone was engineered to express the complete ORF with an expression tag. Expression varies depending on the nature of the gene.
<b>Components:</b>	The ORF clone is ion-exchange column purified and shipped in a 2D barcoded Matrix tube containing 10ug of transfection-ready, dried plasmid DNA (reconstitute with 100 ul of water).
<b>Reconstitution Method:</b>	<ol style="list-style-type: none"> <li>1. Centrifuge at 5,000xg for 5min.</li> <li>2. Carefully open the tube and add 100ul of sterile water to dissolve the DNA.</li> <li>3. Close the tube and incubate for 10 minutes at room temperature.</li> <li>4. Briefly vortex the tube and then do a quick spin (less than 5000xg) to concentrate the liquid at the bottom.</li> <li>5. Store the suspended plasmid at -20°C. The DNA is stable for at least one year from date of shipping when stored at -20°C.</li> </ol>
<b>RefSeq:</b>	<a href="#">NM_032840.3</a>
<b>RefSeq Size:</b>	2568 bp
<b>RefSeq ORF:</b>	1329 bp
<b>Locus ID:</b>	84926
<b>UniProt ID:</b>	<a href="#">Q8NCJ5</a>
<b>Cytogenetics:</b>	12q13.13
<b>Domains:</b>	SPRY
<b>Protein Families:</b>	Druggable Genome
<b>MW:</b>	49.5 kDa

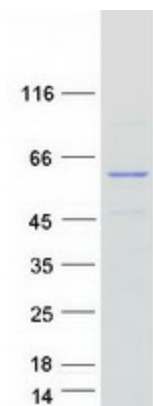
**Product images:**



Circular map for RC212360



Western blot validation of overexpression lysate (Cat# [LY409823]) using anti-DDK antibody (Cat# [TA50011-100]). Left: Cell lysates from untransfected HEK293T cells; Right: Cell lysates from HEK293T cells transfected with RC212360 using transfection reagent MegaTran 2.0 (Cat# [TT210002]).



Coomassie blue staining of purified SPRYD3 protein (Cat# [TP312360]). The protein was produced from HEK293T cells transfected with SPRYD3 cDNA clone (Cat# RC212360) using MegaTran 2.0 (Cat# [TT210002]).