

Product datasheet for **RC212357**

FAM86A (EEF2KMT) (NM_201598) Human Tagged ORF Clone

Product data:

Product Type:	Expression Plasmids
Product Name:	FAM86A (EEF2KMT) (NM_201598) Human Tagged ORF Clone
Tag:	Myc-DDK
Symbol:	FAM86A
Synonyms:	eEF2-KMT; EFM3; FAM86A; SB153
Mammalian Cell Selection:	Neomycin
Vector:	pCMV6-Entry (PS100001)
E. coli Selection:	Kanamycin (25 ug/mL)
ORF Nucleotide Sequence:	>RC212357 representing NM_201598 Red=Cloning site Blue=ORF Green=Tags(s)

TTTTGTAATACGACTCACTATAGGGCGGCCGGAATTCGTCGACTGGATCCGGTACCGAGGAGATCTGCC
GCC**CGATCGCC**

ATGGCGCCCGAGGAGAACCGGGGACCGAACTCTTGCTGCAGAGTTTCGAGCGCCGCTTCTGGCGGCAC
GCACACTGCGCTCCTCCCCTGGCAGAGCTTAGAAGCAAAGTTAAGAGACTCATCAGATTCTGAGCTGCT
GCGGGATATTTGCACAAGACTGTGAAGCATCCTGTGTGTGTGAAGCACCCGCCCTCCGTCAAATATGCC
CGGTGCTTCTCTCAGAACTCATAAAAAGCCCTCGGGAGGCTCGGTCACTCTCCGAGAGCACGGCCA
TCATCTCTACGGTACCACAGGCCTGGTCACATGGGACCGCCCTCTACCTTGCAGAATGGCCATCGA
GAACCCGGCAGTCTTCACTAACAGGACTGTCCTAGAGCTTGGCAGTGGTCTGGCCTCACAGGCCTGGCC
ATCTGCAAGATGTGCCGCCCCGGGCATACATCTTCAGCGACTGTCACAGCCGGTCTTGGAGCAGTCC
GAGGGAATGTCCTTCTCAATGGCCTCTCATTAGAGGCAGACATCACTGCCAAGTTAGACAGCCCCAGGGT
GACAGTGGCCAGCTGGACTGGGACGTCGCGACGGTCCATCAGCTCTCTGCCTTCCAGCCAGATGTTGTC
ATTGCAGCAGATGTGCTGTATTGCCCAGAAGCCATCATGTGCTGGTGGCGTCTGCGGAGGCTGGCTG
CCTGCCGGGAGCACACGCGGGCTCCTGAGGTCTACGTGGCCTTACCCTCCGCAACCCAGAGACGTGCCA
GCTGTTACCACCGAGCTAGGCCGGCCGGGATCAGATGGGAAGTGAACCTCGTCATGAGCAGAAAATG
TTCCCTACGAAGAGCACTTGGAGATGGCAATGCTGAATCTCACCTG

ACGCGTACGCGGCCGCTCGAGCAGAAACTCATCTCAGAAGAGGATCTGGCAGCAAATGATATCCTGGATT
ACAAGGATGACGACGATAAGGTTTAA



[View online »](#)

Protein Sequence: >RC212357 representing NM_201598
Red=Cloning site Green=Tags(s)

MAPEENAGTELLQLSFERRFLAARTLRSFPWQSLEAKLRDSSSELLRDILHKTVKHPVCVKHPPSVKYA
 RCFLSELIKKPSGGSVTLSESTAIISYGTGLVTWDAALYLAEWAIENPAVFTNRNVLGSGAGLTGLA
 ICKMCRPRAYIFSDCHSRVLEQLRGNVLLNGLSLEADITAKLDSRPVTVAQLDWDVATVHQLSAFQPDVV
 IAADVLYCPEAIMSLVGLRRLAACREHQRAPEVYVAFVTRNPETCQLFTTELGRAGIRWEVEPRHEQKL
 FPYEEHLEMAMLNLT

TRTRPLEQKLISEEDLAANDILDYKDDDDKV

Chromatograms: https://cdn.origene.com/chromatograms/mk8050_c03.zip

Restriction Sites: SgfI-MluI

Cloning Scheme:



ACCN: NM_201598

ORF Size: 888 bp

OTI Disclaimer: The molecular sequence of this clone aligns with the gene accession number as a point of reference only. However, individual transcript sequences of the same gene can differ through naturally occurring variations (e.g. polymorphisms), each with its own valid existence. This clone is substantially in agreement with the reference, but a complete review of all prevailing variants is recommended prior to use. [More info](#)

OTI Annotation: This clone was engineered to express the complete ORF with an expression tag. Expression varies depending on the nature of the gene.

Components: The ORF clone is ion-exchange column purified and shipped in a 2D barcoded Matrix tube containing 10ug of transfection-ready, dried plasmid DNA (reconstitute with 100 ul of water).

Reconstitution Method:

1. Centrifuge at 5,000xg for 5min.
2. Carefully open the tube and add 100ul of sterile water to dissolve the DNA.
3. Close the tube and incubate for 10 minutes at room temperature.
4. Briefly vortex the tube and then do a quick spin (less than 5000xg) to concentrate the liquid at the bottom.
5. Store the suspended plasmid at -20°C. The DNA is stable for at least one year from date of shipping when stored at -20°C.

RefSeq: [NM_201598.3](#), [NP_963892.1](#)

RefSeq Size: 1330 bp

RefSeq ORF: 891 bp

Locus ID: 196483

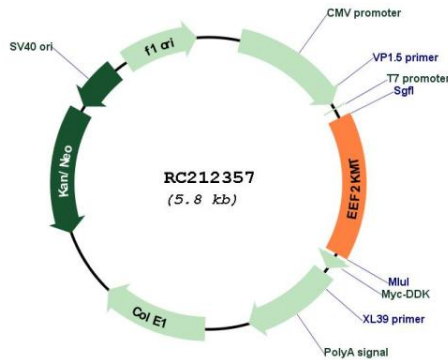
UniProt ID: [Q96G04](#)

Cytogenetics: 16p13.3

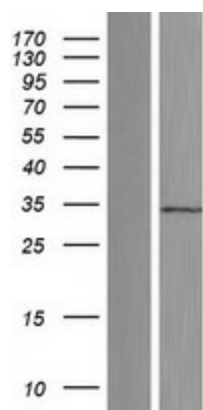
MW: 32.9 kDa

Gene Summary: Catalyzes the trimethylation of eukaryotic elongation factor 2 (EEF2) on 'Lys-525'.
[UniProtKB/Swiss-Prot Function]

Product images:



Circular map for RC212357



Western blot validation of overexpression lysate (Cat# [LY404481]) using anti-DDK antibody (Cat# [TA50011-100]). Left: Cell lysates from untransfected HEK293T cells; Right: Cell lysates from HEK293T cells transfected with RC212357 using transfection reagent MegaTran 2.0 (Cat# [TT210002]).