

## Product datasheet for **RC212354**

### MEGF9 (NM\_001080497) Human Tagged ORF Clone

#### Product data:

Product Type:	Expression Plasmids
Product Name:	MEGF9 (NM_001080497) Human Tagged ORF Clone
Tag:	Myc-DDK
Symbol:	MEGF9
Synonyms:	EGFL5
Mammalian Cell Selection:	Neomycin
Vector:	pCMV6-Entry (PS100001)
E. coli Selection:	Kanamycin (25 ug/mL)



[View online »](#)

**ORF Nucleotide Sequence:**

>RC212354 representing NM\_001080497  
 Red=Cloning site Blue=ORF Green=Tags(s)

TTTTGTAATACGACTCACTATAGGGCGGCCGGGAATTCGTCGACTGGATCCGGTACCGAGGAGATCTGCC  
 GCC**CGGATCGCC**

ATGAGGAGCCTGCCGAGCCTGGGCGGCCTCGCCCTGTTGTGCTGCGCCGCCGCCGCCGCCGCCGCCGCC  
 TCGCCTCAGCCGCTCGGCGGGGAATGTACCCGGTGGCGGCGGGCCCGGGGCAGGTGGACGCGTCGCC  
 GGGCCCCGGGTTGCGGGGCGAGCCAGCCACCCCTTCCCTAGGGCGACGGCTCCCACGGCCAGGCCCCG  
 AGGACCGGGCCCCGCGCGCCACCGTCCACCGACCCCTGGCTGCGACTTCTCCAGCCAGTCCCCGGAGA  
 CCACCCCTCTTTGGGCGACTGCTGGACCCTCTCCACCACCTTTCCAGGCGCGCTCGGCCCTCGCCGAC  
 CACCCCTCGGCGGGGAACGCACTTCGACCACCTCTCAGGCGCCGACCAGACCCGCGCCGACCACCCCT  
 TCGACGACCCTGGCCCGCGCCGACCACCCCTGTAGCGACCACCGTACCGGCGCCACGACTCCCCGGA  
 CCCCAGCCCCGATCTCCCAGCAGCAGCAACAGCAGCGTCTCCCACCCACCTGCCACCGAGGCCCC  
 CTCTTCGCTCTCCAGGCATCAGTGGCTGTGGCAAAGATGCCCAAAAGTATCTAGGAAAATATGCC  
 TGTGAGAGTAACCTGAAAAGCAAGTACTTGCCCTTACACAGCCAGTCATGAATCTTAGAGTCTCAGAAG  
 CTGTTAAAACGGAGTATGTATGTAACCTGCTCTGTGGTTGGAAGCCTGAATGTGAATCGCTGCAACCAGAC  
 CACAGGGCAGTGTGAGTGTGGCCAGGTTATCAGGGGCTTCACTGTGAAACCTGCAAAGAGGGCTTTTAC  
 CTAATTACACTTCTGGGCTCTGTGAGCCATGTACTGTAGTCCACATGGAGCTCTCAGCATACCGTGCA  
 ACAGTTCTGGGAAATGCCAGTCAAAGTGGGTGTATTGGCTCTATATGTGACCGATGCCAAGATGGATA  
 TTATGGCTTTAGTAAGAATGGCTGCTTGCCCTGCCAATGCAATAATCGGTCTGCCAGTTGCGATGCCCTC  
 ACAGGTGCTTGTAAACTGCCAGGAAAATAGCAAAGGAAATCACTGTGAAGAATGTAAGAAGGATTTT  
 ATCAGAGTCTGATGCCACTAAAGAATGTCTTCGCTGCCCTTGTTCAGCAGTGACATCTACAGGCAGCTG  
 CTCTATAAAATCGAGTGAATTGGAACCTGAATGTGACCAGTGTAAAGATGGTTACATAGGCCCGAACTGC  
 AATAAATGTGAAAATGGCTATTACAATTTTGACAGCATCTGTAGAAAAGTCCAATGTCACGGCCATGTGG  
 ACCCAGTTAAAACCTCAAAGATTTGTAAGCCCCGAGAGTGGTGTGATCAACTGCCTCCATAACACCAC  
 TGGGTTTTGGTGTGAGAACTGCCTAGAAGGTTATGTTACGACCTCGAGGGAAAATTGCATCAAGAAAGAA  
 GTTATTCTTCAAACACTGAAGTTCTACCATTTTGGTTTCCAATGCCTCTTTGACCACATCAGTGCCCA  
 CCCCTGTATAAATAGTACTTTTACCCCTACAACCCTGCAGACTATCTTTTCAGTAAGCACTTCTGAAAA  
 CAGCACTCAGCTTTAGCTGATGTATCATGGACCAATTTAACATCATCATTTTTCAGTACATCATCATT  
 GTTGTGGTGTGCTAATGGGATTTGTGGGGCTGTATATATGTACCGGAGTACCAAAACCGGAAACTCA  
 ATGCCCTTTTGGACCATCGAGCTGAAAGAAGACAATATCAGTTTCAGCAGCTACCATGACAGCATTCC  
 CAATGCAGATGTTTCGGGATTGTTGGAAGATGATGGCAATGAAGTGGCTCCCAATGGGCAGCTGACCCCTG  
 ACGACGCCATACATAACTACAAAGCC

AG**CGGACCG**ACGCGTACGCGGCCGCTCGAGCAGAAACTCATCTCAGAAGAGGATCTGGCAGCAAATGATATCC  
 TGGATTACAAGGATGACGACGATAAGGTTTAA

**Protein Sequence:** >RC212354 representing NM\_001080497  
Red=Cloning site Green=Tags(s)

MRS LPS LGG LALLCCAAAAA AVASAASAGNVTGGGGAAGQVDASPGPLRGEP SHPFP RATAPTAQAP  
 RTGPPRATVHRPLAATSPAQSPETTPLWATAGPSSTTFQAPLGPSP TTPPAAERTSTTSQAPTRPAP TTL  
 STTTGPAP TTPVATTVPAP TTPRTPDLPSSSSNSVLP TTPPATEAPSSPPPGHQWPVAKMPQKYL GKYA  
 CESNLKSKYLPLTQPVMNLRVSEAVKTEYVCNCSVVGSLNVNRCNQTTGQCECRPGYQGLHCETCKEGFY  
 LNYTSGLCQPCDCSPHGALSIPCNSSGKCQCKVGVIGSICDRCDQGYGF SKNGCLPCQCNNRSASCDAL  
 TGACLNCQENSKGNHCEECKEGFYQSPDATKECLRCPCSAVTSTGSCSIKSSELEPECDQCKDGYIGPNC  
 NKCENGYNFDSICRKQCCHGHVDPVKTPKICKPESGECINCLHNTTGFWCENCLEGYVHDLEGNCIKKE  
 VILPTPEGSTILVSNASLTTSVPTVINSTFTPTTLQTIFSVSTENSTSALADVSWTQFNIIILTVIII  
 VVLLMGFVGAVMYREYQNRKLNAPFWTIELKEDNISFSSYHDSIPNADVSGLLEDDGNEVAPNGQLTL  
 TTPIHNYKA

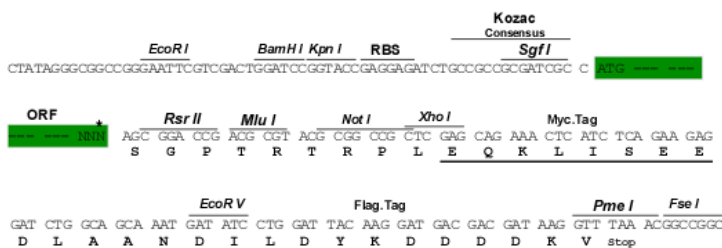
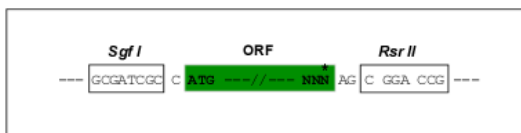
SGPTRRRLEQKLISEEDLAANDILDYKDDDDKV

**Chromatograms:** [https://cdn.origene.com/chromatograms/mk8026\\_c01.zip](https://cdn.origene.com/chromatograms/mk8026_c01.zip)

**Restriction Sites:** SgfI-RsrII

**Cloning Scheme:**

Cloning sites used for ORF Shutting:



\* The last codon before the Stop codon of the ORF

**ACCN:** NM\_001080497

**ORF Size:** 1917 bp

**OTI Disclaimer:** The molecular sequence of this clone aligns with the gene accession number as a point of reference only. However, individual transcript sequences of the same gene can differ through naturally occurring variations (e.g. polymorphisms), each with its own valid existence. This clone is substantially in agreement with the reference, but a complete review of all prevailing variants is recommended prior to use. [More info](#)

**OTI Annotation:** This clone was engineered to express the complete ORF with an expression tag. Expression varies depending on the nature of the gene.

**Components:** The ORF clone is ion-exchange column purified and shipped in a 2D barcoded Matrix tube containing 10ug of transfection-ready, dried plasmid DNA (reconstitute with 100 ul of water).

**Reconstitution Method:**

1. Centrifuge at 5,000xg for 5min.
2. Carefully open the tube and add 100ul of sterile water to dissolve the DNA.
3. Close the tube and incubate for 10 minutes at room temperature.
4. Briefly vortex the tube and then do a quick spin (less than 5000xg) to concentrate the liquid at the bottom.
5. Store the suspended plasmid at -20°C. The DNA is stable for at least one year from date of shipping when stored at -20°C.

**RefSeq:** [NM\\_001080497.1](#), [NP\\_001073966.1](#)

**RefSeq Size:** 6297 bp

**RefSeq ORF:** 1809 bp

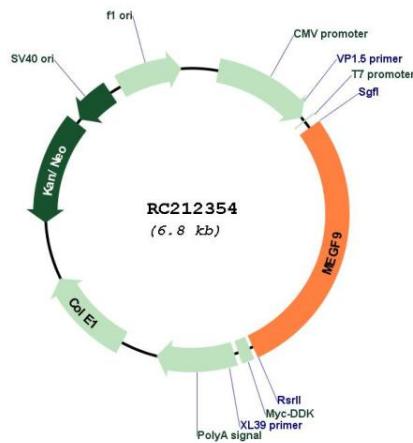
**Locus ID:** 1955

**UniProt ID:** [Q9H1U4](#)

**Cytogenetics:** 9q33.2

**MW:** 67.1 kDa

**Product images:**



Circular map for RC212354