

Product datasheet for **RC212345**

FUT8 (NM_178154) Human Tagged ORF Clone

Product data:

Product Type:	Expression Plasmids
Product Name:	FUT8 (NM_178154) Human Tagged ORF Clone
Tag:	Myc-DDK
Symbol:	FUT8
Synonyms:	MGC26465
Mammalian Cell Selection:	Neomycin
Vector:	pCMV6-Entry (PS100001)
E. coli Selection:	Kanamycin (25 ug/mL)



[View online »](#)

ORF Nucleotide Sequence:

>RC212345 representing NM_178154
 Red=Cloning site Blue=ORF Green=Tags(s)

TTTTGTAATACGACTCACTATAGGGCGGCCGGAATTCGTCGACTGGATCCGGTACCGAGGAGATCTGCC
 GCC**GCGATCGCC**

ATGCGCCCATGGACTGGTTCCTGGCGTTGGATTATGCTCATTCTTTTGCCTGGGGACCTTGCTGTTTT
 ATATAGGTGGTCACTTGGTACGAGATAATGACCATCCTGATCACTCTAGCCGAGAACTGTCCAAGATTCT
 GGCAAAGCTTGAACGCTTAAAACAACAGAAATGAAGACTTGAGGCGAATGGCCGAATCTCTCCGGATACCA
 GAAGGCCCTATTGATCAGGGGCCAGCTATAGGAAGAGTACGCGTTTTAGAAGAGCAGCTTGTAAAGGCCA
 AAGAACAGATTGAAAATTACAAGAAACAGACCAGAAATGGTCTGGGGAAGGATCATGAAATCCTGAGGAG
 GAGGATTGAAAATGGAGCTAAAGAGCTCTGTTTTTCTACAGAGTGAATTGAAGAAATTAAGAACTTA
 GAAGGAAATGAACTCAAAGACATGCAGATGAATTTCTTTGGATTTAGGACATCATGAAAGGTCTATAA
 TGACGGATCTATACTACCTCAGTCAGACAGATGGAGCAGGTGATTGGCGGAAAAAGAGGCCAAAGATCT
 GACAGAACTGGTTCAGCGGAGAATAACATATCTTCAGAATCCCAAGGACTGCAGCAAAGCCAAAAAGCTG
 GTGTGTAATATAACAAAGGCTGTGGCTATGGCTGTCAGCTCCATCATGTGGTCTACTGTTTCATGATTG
 CATATGGCACCCAGCGAACACTCATCTTGAATCTCAGAATTGGCGCTATGCTACTGGTGGATGGGAGAC
 TGTATTTAGGCCGTGAAGTGAGACATGCACAGACAGATCTGGCATCTCCACTGGACACTGGTCAGGTGAA
 GTGAAGGACAAAAATGTTCAAGTGGTCGAGCTTCCCATTTAGACAGTCTTCATCCCCGTCTCCATATT
 TACCCTTGGCTGTACCAGAAGACCTCGCAGATCGACTTGTACGAGTGCATGGTGACCCTGCAGTGTGGTG
 GGTGTCTCAGTTTGTCAAATACTTGATCCGCCACAGCCTTGGCTAGAAAAAGAAATAGAAGAAGCCACC
 AAGAAGCTTGGCTTCAAACATCCAGTTATTGGAGTCCATGTGACGCGCACAGACAAAGTGGGAACAGAAG
 CTGCCTTCCATCCATTGAAGAGTACATGGTGCATGTTGAAGAACATTTTCAGCTTCTTGCACGCAGAAT
 GCAAGTGGACAAAAAAGAGTGTATTTGGCCACAGATGACCCTTCTTTATTAAGGAGGCCAAAAACAAG
 TACCCCAATTATGAATTTATTAGTGATAACTCTATTTCTGGTCACTGGACTGCACAATCGATACACAG
 AAAATTCACTTCTGGAGTGATCCTGGATATACATTTTCTCTCAGGCAGACTTCTAGTGTGTACTTT
 TTCATCCAGGTCTGTCGAGTTGCTTATGAAATATGCAAACACTACATCCTGATGCCTCTGCAAATTC
 CATTCTTTAGATGACATCTACTATTTTGGGGCCAGAATGCCACAATCAAATTGCCATTTATGCTCACC
 AACCCCGAAGTGCAGATGAAATCCCATGGAACCTGGAGATATCATTGGTGTGGCTGGAATCATTGGGA
 TGGCTATTCTAAAGGTGTCAACAGGAAATGGGAAGGACGGCCATATCCCTCTACAAAGTTCGAGAG
 AAGATAGAAACGGTCAAGTACCCACATATCCTGAGGCTGAGAAA

AG**GCGACCG**ACGCGTACGCGGCCGCTCGAGCAGAACTCATCTCAGAAGAGGATCTGGCAGCAAATGATATCC
 TGGATTACAAGGATGACGACGATAAGGTTTAA

Protein Sequence:

>RC212345 representing NM_178154
 Red=Cloning site Green=Tags(s)

MRPWTGSWRWIMLILFAWGTLFFYIGGHLVRDNDHPDSSRELSKILAKLERLKQONEDLRRMAESLRIP
 EGPIDQGPAGRVRVLEEQLVKAKEQIENYKQTRNGLGKDHEILRRRIENGAKELWFFLQSELKLLKLN
 EGNELQRHADEFLLDLGHHERSIMTDLYL SQTGAGDWREKEAKDL TELVQRRIYTLQNPKDCSKAKKL
 VCNINKGCGYGCQLHHVVYCFMIA YGTQRTL ILESQNWRYATGGWETVFRPVSETCTDRSGISTGHWSGE
 VKDKNVQVVLP IVDLSLHPRPPYPLAVPEDLADRLVRVHGDPVWVWSQFVKYLIRPQPWLEKEIEEAT
 KKLGFKHPVIGVHVRRTDKVGTEAAFHP IEEYMHVVEEHFQLARRMQVDKRVLYLATDDPSLLKEAKTK
 YPNYEFISDNSISWSAGLHNRYTENS LRGVILDIHFLSQADFLVCTFSSQVCRVAYEIMQTLHPDASANF
 HSLDDIYYFGGQNAHNQIAIYAHQPRTADEIPMEPGDIIIGVAGNHWGYSKGVNRKLGRTGLYPSYKVR
 KIETVKYPTYPEAEK

SGP**TRTRRLEQKLI**SEEDLAANDILDYKDDDDKV

Chromatograms:

https://cdn.origene.com/chromatograms/mk8013_c07.zip

Restriction Sites:

Sgfl-RsrII

Cloning Scheme:


ACCN: NM_178154

ORF Size: 1725 bp

OTI Disclaimer: The molecular sequence of this clone aligns with the gene accession number as a point of reference only. However, individual transcript sequences of the same gene can differ through naturally occurring variations (e.g. polymorphisms), each with its own valid existence. This clone is substantially in agreement with the reference, but a complete review of all prevailing variants is recommended prior to use. [More info](#)

OTI Annotation: This clone was engineered to express the complete ORF with an expression tag. Expression varies depending on the nature of the gene.

Components: The ORF clone is ion-exchange column purified and shipped in a 2D barcoded Matrix tube containing 10ug of transfection-ready, dried plasmid DNA (reconstitute with 100 ul of water).

Reconstitution Method:

1. Centrifuge at 5,000xg for 5min.
2. Carefully open the tube and add 100ul of sterile water to dissolve the DNA.
3. Close the tube and incubate for 10 minutes at room temperature.
4. Briefly vortex the tube and then do a quick spin (less than 5000xg) to concentrate the liquid at the bottom.
5. Store the suspended plasmid at -20°C. The DNA is stable for at least one year from date of shipping when stored at -20°C.

RefSeq: [NM_178154.1](#), [NP_835367.1](#)

RefSeq Size: 3291 bp

RefSeq ORF: 1727 bp

Locus ID: 2530

Cytogenetics: 14q23.3

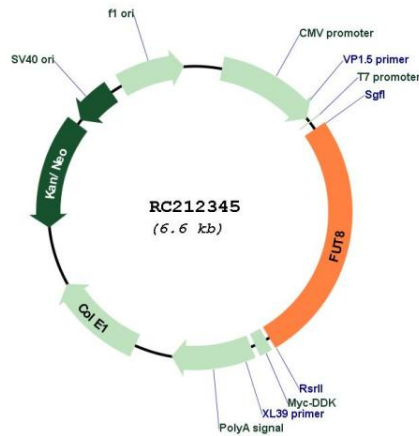
Protein Families: Transmembrane

Protein Pathways: Keratan sulfate biosynthesis, Metabolic pathways, N-Glycan biosynthesis

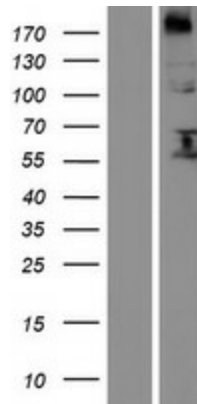
MW: 66.3 kDa

Gene Summary: This gene encodes an enzyme belonging to the family of fucosyltransferases. The product of this gene catalyzes the transfer of fucose from GDP-fucose to N-linked type complex glycopeptides. This enzyme is distinct from other fucosyltransferases which catalyze alpha1-2, alpha1-3, and alpha1-4 fucose addition. The expression of this gene may contribute to the malignancy of cancer cells and to their invasive and metastatic capabilities. Alternative splicing results in multiple transcript variants. [provided by RefSeq, May 2011]

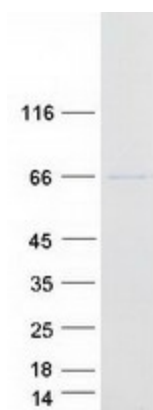
Product images:



Circular map for RC212345



Western blot validation of overexpression lysate (Cat# [LY406002]) using anti-DDK antibody (Cat# [TA50011-100]). Left: Cell lysates from untransfected HEK293T cells; Right: Cell lysates from HEK293T cells transfected with [RC223075] using transfection reagent MegaTran 2.0 (Cat# [TT210002]).



Coomassie blue staining of purified FUT8 protein (Cat# [TP312345]). The protein was produced from HEK293T cells transfected with FUT8 cDNA clone (Cat# RC212345) using MegaTran 2.0 (Cat# [TT210002]).