

## Product datasheet for **RC212344**

### SHFL (NM\_018381) Human Tagged ORF Clone

#### Product data:

Product Type:	Expression Plasmids
Product Name:	SHFL (NM_018381) Human Tagged ORF Clone
Tag:	Myc-DDK
Symbol:	SHFL
Synonyms:	C19orf66; IRAV; RyDEN; SFL
Mammalian Cell Selection:	Neomycin
Vector:	pCMV6-Entry (PS100001)
E. coli Selection:	Kanamycin (25 ug/mL)
ORF Nucleotide Sequence:	>RC212344 representing NM_018381 Red=Cloning site Blue=ORF Green=Tags(s)

TTTGTAAATACGACTCACTATAGGGCGGCCGGAATTCGTCGACTGGATCCGGTACCGAGGAGATCTGCC  
GCC**CGATCGC**

ATGTCTCAGGAAGGTGTGGAGCTGGAGAAGAGCGTCCGGCGCCTCCGGGAGAAGTTTCATGGGAAGGTAT  
CCTCCAAGAAGGCGGGGCTCTGATGAGGAAATTCGGCAGCGACCACACGGGAGTGGGGCGCTCCATCGT  
GTACGGGGTAAAGCAAAAAGATGGCCAAGAACTAAGTAACGATCTGGATGCCAGGATCCACCAGAAGAT  
ATGAAGCAGGACCGGGACATTAGGCAGTGGCGACCTCCCTCCTGCCACTGACAGAAGCCAACCTACGCA  
TGTTTCAACGTGCCAGGACGACCTTATCCCTGCTGTGGACCGGCAGTTTGCCTGCTCCTCTGCGACCA  
CGTCTGGTGGCGCCGCTGCCCGAGCGGAAGGAGGTATCCCGGTGCCGGAATGCCGGAAGCGCTACGAG  
CCAGTGCCAGCTGACAAGATGTGGGGCCTGGCTGAGTTCCACTGCCCAGGTGTCCGCACAACTCCGGG  
GCTGGGCACAGATGGGGTCCCCGTCCCCCTGCTACGGGTGCGGCTTCCCGTGTATCCAACACGGATCCT  
CCCCCGCGCTGGGACCGGGACCGGATCGCCGAGCACCACACTCACTCCTGCTCAGCTGCCGACTGC  
TACAACCGGCGAGAGCCCCACGTGCCTGGGACATCCTGTGCTCACCCCAAGAGCCGGAAGCAGAACCACC  
TGCCCAAAGTGCTCCACCCAGCAACCTCACATTAGCAGTGGCTCCACTGTGGCCACCTGCTTGAGCCA  
GGGTGGCTCCTGGAAGACCTGGACAACCTCATCTGGAGGACCTGAAGGAGGAGGAGGAAGAGGAG  
GAGGTGGAGGACGAGGAGGGCGGCCAGGGAG

**ACGCGT**ACGCGGCGCTCGAGCAGAACTCATCTCAGAAGAGGATCTGGCAGCAATGATATCCTGGATT  
ACAAGGATGACGACGATAAGGTTTAA



[View online »](#)

**Protein Sequence:** >RC212344 representing NM\_018381  
 Red=Cloning site Green=Tags(s)

MSQEGVELEKSVRRLREKFHGKVSSKKAGALMRKFGSDHTGVGRSIVYGVKQKDGQELSNDLDAQDPPED  
 MKQDRDIQAVATSLPLTEANLRFQRAQDDLIPAVDRQFACSSCDHVWRRVPQRKEVSRCKRCKRYE  
 PVPADKMWGLAEFHCPKCRHNFRGWAQMGSPSPCYGCGFPVYPTIRLPPRWDRDPDRRSTHTHSCSAADC  
 YNRREPHVPGTSCAHPKSRKQNHLPKVLHPSNPHISSGSTVATCLSQGGLLEDLDNLILEDLKEEEEEEE  
 EVEDEEGGPRE

TRTRPLEQKLISEEDLAANDILDYKDDDDKV

**Chromatograms:** [https://cdn.origene.com/chromatograms/mk8026\\_c03.zip](https://cdn.origene.com/chromatograms/mk8026_c03.zip)

**Restriction Sites:** SgfI-MluI

**Cloning Scheme:**



**ACCN:** NM\_018381

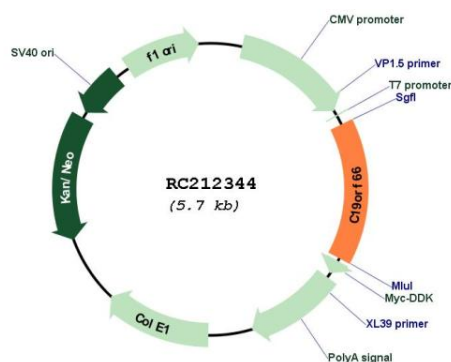
**ORF Size:** 873 bp

**OTI Disclaimer:** Due to the inherent nature of this plasmid, standard methods to replicate additional amounts of DNA in E. coli are highly likely to result in mutations and/or rearrangements. Therefore, OriGene does not guarantee the capability to replicate this plasmid DNA. Additional amounts of DNA can be purchased from OriGene with batch-specific, full-sequence verification at a reduced cost. Please contact our customer care team at [custsupport@origene.com](mailto:custsupport@origene.com) or by calling 301.340.3188 option 3 for pricing and delivery.

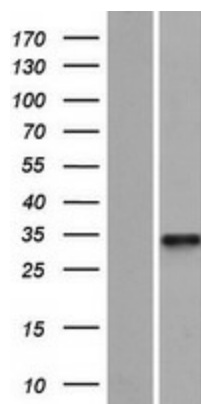
The molecular sequence of this clone aligns with the gene accession number as a point of reference only. However, individual transcript sequences of the same gene can differ through naturally occurring variations (e.g. polymorphisms), each with its own valid existence. This clone is substantially in agreement with the reference, but a complete review of all prevailing variants is recommended prior to use. [More info](#)

<b>OTI Annotation:</b>	This clone was engineered to express the complete ORF with an expression tag. Expression varies depending on the nature of the gene.
<b>Components:</b>	The ORF clone is ion-exchange column purified and shipped in a 2D barcoded Matrix tube containing 10ug of transfection-ready, dried plasmid DNA (reconstitute with 100 ul of water).
<b>Reconstitution Method:</b>	<ol style="list-style-type: none"> <li>1. Centrifuge at 5,000xg for 5min.</li> <li>2. Carefully open the tube and add 100ul of sterile water to dissolve the DNA.</li> <li>3. Close the tube and incubate for 10 minutes at room temperature.</li> <li>4. Briefly vortex the tube and then do a quick spin (less than 5000xg) to concentrate the liquid at the bottom.</li> <li>5. Store the suspended plasmid at -20°C. The DNA is stable for at least one year from date of shipping when stored at -20°C.</li> </ol>
<b>Note:</b>	Plasmids are not sterile. For experiments where strict sterility is required, filtration with 0.22um filter is required.
<b>RefSeq:</b>	<u><a href="#">NM_018381.4</a></u>
<b>RefSeq Size:</b>	1911 bp
<b>RefSeq ORF:</b>	876 bp
<b>Locus ID:</b>	55337
<b>UniProt ID:</b>	<u><a href="#">Q9NUL5</a></u>
<b>Cytogenetics:</b>	19p13.2
<b>MW:</b>	32.9 kDa
<b>Gene Summary:</b>	Exhibits antiviral activity against dengue virus (DENV) and can inhibit the replication of all DENV serotypes. May block the protein translation of DENV RNA via its association with cellular mRNA-binding proteins and viral RNA. Can also limit the replication of hepatitis C virus (HCV), West Nile virus (WNV), Chikungunya virus (CHIKV), herpes simplex virus type 1 (HHV-1) and human adenovirus (PubMed:26735137).[UniProtKB/Swiss-Prot Function]

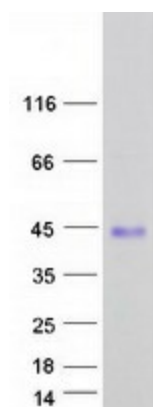
## Product images:



Circular map for RC212344



Western blot validation of overexpression lysate (Cat# [LY413081]) using anti-DDK antibody (Cat# [TA50011-100]). Left: Cell lysates from untransfected HEK293T cells; Right: Cell lysates from HEK293T cells transfected with RC212344 using transfection reagent MegaTran 2.0 (Cat# [TT210002]).



Coomassie blue staining of purified SHFL protein (Cat# [TP312344]). The protein was produced from HEK293T cells transfected with SHFL cDNA clone (Cat# RC212344) using MegaTran 2.0 (Cat# [TT210002]).