

Product datasheet for RC212334L1

SHISA3 (NM_001080505) Human Tagged Lenti ORF Clone

Product data:

Product Type:	Expression Plasmids
Product Name:	SHISA3 (NM_001080505) Human Tagged Lenti ORF Clone
Tag:	Myc-DDK
Symbol:	SHISA3
Synonyms:	hShisa3
Mammalian Cell Selection:	None
Vector:	pLenti-C-Myc-DDK (PS100064)
E. coli Selection:	Chloramphenicol (34 ug/mL)
ORF Nucleotide Sequence:	The ORF insert of this clone is exactly the same as(RC212334).
Restriction Sites:	SgfI-MluI
Cloning Scheme:	

Cloning sites used for ORF Shuttling:



* The last codon before the Stop codon of the ORF.

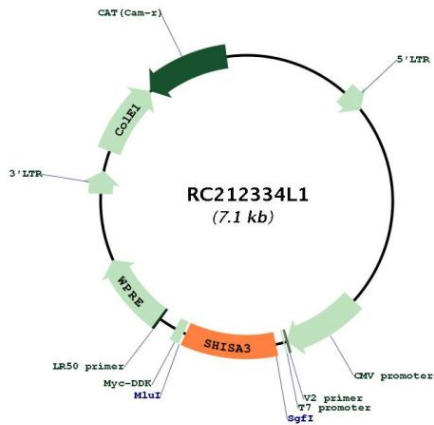
ACCN:	NM_001080505
ORF Size:	714 bp



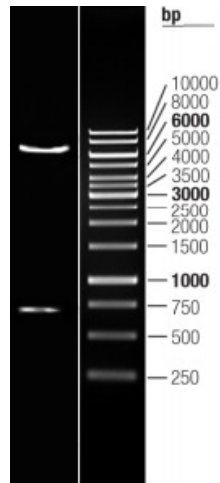
[View online »](#)

OTI Disclaimer:	The molecular sequence of this clone aligns with the gene accession number as a point of reference only. However, individual transcript sequences of the same gene can differ through naturally occurring variations (e.g. polymorphisms), each with its own valid existence. This clone is substantially in agreement with the reference, but a complete review of all prevailing variants is recommended prior to use. More info
OTI Annotation:	This clone was engineered to express the complete ORF with an expression tag. Expression varies depending on the nature of the gene.
Components:	The ORF clone is ion-exchange column purified and shipped in a 2D barcoded Matrix tube containing 10ug of transfection-ready, dried plasmid DNA (reconstitute with 100 ul of water).
Reconstitution Method:	<ol style="list-style-type: none">1. Centrifuge at 5,000xg for 5min.2. Carefully open the tube and add 100ul of sterile water to dissolve the DNA.3. Close the tube and incubate for 10 minutes at room temperature.4. Briefly vortex the tube and then do a quick spin (less than 5000xg) to concentrate the liquid at the bottom.5. Store the suspended plasmid at -20°C. The DNA is stable for at least one year from date of shipping when stored at -20°C.
RefSeq:	NM_001080505.1 , NP_001073974.1
RefSeq Size:	1971 bp
RefSeq ORF:	717 bp
Locus ID:	152573
UniProt ID:	A0PIX4
Cytogenetics:	4p13
Protein Families:	Transmembrane
MW:	25.7 kDa
Gene Summary:	This gene encodes a single-transmembrane protein which is one of nine members of a family of transmembrane adaptors that modulate both WNT and FGF signaling by blocking the maturation and transport of their receptors to the cell surface. Members of this family contain an N-terminal cysteine-rich domain with a distinct cysteine pattern, a single transmembrane domain, and a C-terminal proline-rich, low complexity region. The encoded protein acts as a tumor suppressor by accelerating beta-catenin degradation. [provided by RefSeq, Jul 2017]

Product images:



Circular map for RC212334L1



Double digestion of RC212334L1 using SgfI and MluI