

Product datasheet for **RC212334**

SHISA3 (NM_001080505) Human Tagged ORF Clone

Product data:

Product Type:	Expression Plasmids
Product Name:	SHISA3 (NM_001080505) Human Tagged ORF Clone
Tag:	Myc-DDK
Symbol:	SHISA3
Synonyms:	hShisa3
Mammalian Cell Selection:	Neomycin
Vector:	pCMV6-Entry (PS100001)
E. coli Selection:	Kanamycin (25 ug/mL)
ORF Nucleotide Sequence:	>RC212334 ORF sequence Red=Cloning site Blue=ORF Green=Tags(s)

TTTTGTAATACGACTCACTATAGGGCGGCCGGAATTCGTCGACTGGATCCGGTACCGAGGAGATCTGCC
GCC**CGATCGCC**

ATGAGGGCACTGCTGGCGCTTTGCCTTCTCCTTGGCTGTCTGCGCTGGGGCCCGGGCGGCCAGCAGT
CCGGAGAGTACTGCCACGGCTGGGTGGACGTGCAGGGCACTACCACGAGGGCTTCCAGTGCCCAGAGGA
CTTCGACACGCTGGACGCTACCATCTGCTGCGGCTCCTGCGCGCTCCGCTACTGTTGCGCCGCGGCCGAC
GCCAGGCTGGAGCAGGGCGGCTGCACCAACGACCGCCGGAAGTGGAGCACCCAGGCATCACTGCGCAGC
CTGTCTACGTCCCCTTCTCATCGTCGGCTCCATCTTCATTGCGTTCATCATCCTGGGCTCTGTAGTGGC
TATTTATTGTTGCACCTGTTGAGACCCAAGGAGCCCTCGCAGCAGCCAATCCGCTTCTCACTCCGAGC
TATCAGACAGAGACCCTGCCATGATCCTGACCTCCACCAGCCCCAGGGCACCCCTCCCGGAGTCCAGCA
CAGCCACGAGCTCCAGCTCCACAGGCGGCTCCATCCGACAGTTCTCCTTTGCCAGGGCTGAGCCGGGCTG
CCTGGTGCCCTCACCGCCCCCGCCATACACCACGACCACTCAATCCACCTGGCTCAGCCATCTGGTTTC
CTGGTGTACCCCAAGTATTTTCGCTTACCCCTCCAGCAGGAGCCCCCACTGCCTGGGAAGAGCTGTCCAG
ACTTCAGTTCCAGT

ACGCGTACGCGGCCGCTCGAGCAGAACTCATCTCAGAAGAGGATCTGGCAGCAAATGATATCCTGGATT
ACAAGGATGACGACGATAAGGTTTAA



[View online »](#)

Reconstitution Method:

1. Centrifuge at 5,000xg for 5min.
2. Carefully open the tube and add 100ul of sterile water to dissolve the DNA.
3. Close the tube and incubate for 10 minutes at room temperature.
4. Briefly vortex the tube and then do a quick spin (less than 5000xg) to concentrate the liquid at the bottom.
5. Store the suspended plasmid at -20°C. The DNA is stable for at least one year from date of shipping when stored at -20°C.

RefSeq: [NM_001080505.1](#), [NP_001073974.1](#)

RefSeq Size: 1971 bp

RefSeq ORF: 717 bp

Locus ID: 152573

UniProt ID: [A0PJX4](#)

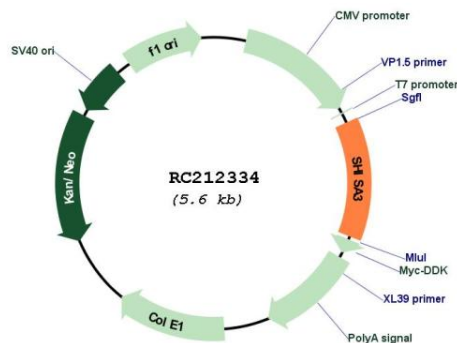
Cytogenetics: 4p13

Protein Families: Transmembrane

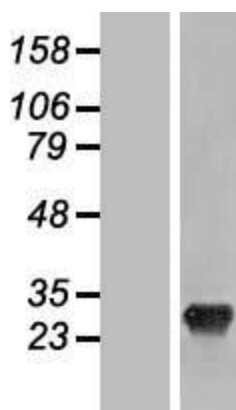
MW: 25.7 kDa

Gene Summary: This gene encodes a single-transmembrane protein which is one of nine members of a family of transmembrane adaptors that modulate both WNT and FGF signaling by blocking the maturation and transport of their receptors to the cell surface. Members of this family contain an N-terminal cysteine-rich domain with a distinct cysteine pattern, a single transmembrane domain, and a C-terminal proline-rich, low complexity region. The encoded protein acts as a tumor suppressor by accelerating beta-catenin degradation. [provided by RefSeq, Jul 2017]

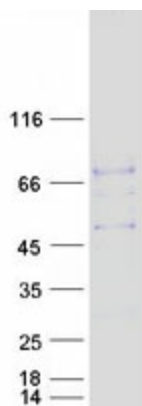
Product images:



Circular map for RC212334



Western blot validation of overexpression lysate (Cat# [LY421060]) using anti-DDK antibody (Cat# [TA50011-100]). Left: Cell lysates from untransfected HEK293T cells; Right: Cell lysates from HEK293T cells transfected with RC212334 using transfection reagent MegaTran 2.0 (Cat# [TT210002]).



Coomassie blue staining of purified SHISA3 protein (Cat# [TP312334]). The protein was produced from HEK293T cells transfected with SHISA3 cDNA clone (Cat# RC212334) using MegaTran 2.0 (Cat# [TT210002]).