

## Product datasheet for **RC212331**

### **RSL1D1 (NM\_015659) Human Tagged ORF Clone**

#### **Product data:**

Product Type:	Expression Plasmids
Product Name:	RSL1D1 (NM_015659) Human Tagged ORF Clone
Tag:	Myc-DDK
Symbol:	RSL1D1
Synonyms:	CSIG; L12; PBK1; UTP30
Mammalian Cell Selection:	Neomycin
Vector:	pCMV6-Entry (PS100001)
E. coli Selection:	Kanamycin (25 ug/mL)



[View online »](#)

**ORF Nucleotide Sequence:**

>RC212331 ORF sequence  
 Red=Cloning site Blue=ORF Green=Tags(s)

TTTTGTAATACGACTCACTATAGGGCGGCCGGAATTCGTCGACTGGATCCGGTACCGAGGAGATCTGCC  
 GCC**CGCATCGCC**

ATGGAGGATTCGGCCTCGCCTCGTGTCTTCTGCAGCCGCTACTGGAACCTCCACCTCGACTCCAGCGG  
 CCCGACAGCACGAAGCAGCTGGATAAAGAACAGGTTAGAAAGCAGTGACGCTCTCTTGACGATTG  
 CAAGTCCAGGAAAAACAATTATGGGTTGCTTTTGAATGAGAATGAAAGTTTATTTTTAATGGTGGTATTA  
 TGGAAAATTCCAAGTAAAGAAGTGGGGTCAAGTTCGACCTTGCCTCATAGTATTCGATCAGATTCAGAAG  
 ATATCTGTTTATTACGAAGGATGAACCAATTCAACTCTGAAAAGACAGAACAGTTTTATAGAAAGCT  
 TTTAAACAAGCATGGAATTAACCGTTTCTCAGATTATCTCCCTCCAACTCTAAGAAGGAATATAAA  
 TCCTATGAAGCCAAGCTCCGCTTCTGAGCAGTTTGTATTCTCCTTACTGATGCCAGAATTAGGCGGC  
 TCTTACCCTCACTATTGGGAGACATTTCTATCAAAGAAAAGAAAGTTCCAGTATCTGTAACCTTCTGTC  
 CAAGAATTTATCAAGAGAGATCAATGACTGTATAGGTGGAACAGTCTTAAACATTTCTAAAAGTGGTTCT  
 TGCAGTGTATACGTATTGGTCAAGTGGAAATGCAAAATGAGCAGTATTTGAAAACATTGTTGCTGTCA  
 CCAAAGGACTTTTCAAAAAATTGCCAGAGAAGTGGGAGAGCGTAAAACCTCTGTTTGTGAAAAGTGAAG  
 ATCGGCTGCATTTCCATCTTTTCTCGTTTGTGCAAAATGGGATGAAGCCACCAAAAGATCTTTGCTT  
 AATAAGAAGAAAAAGAGGCAAGGAGAAAACGAAGAGAAAAGAAATTTTAAAAACAAAAGGAGGGAAGA  
 AGAAGAGGCAGCAGGCTAGGAAGACTGCATCAGTTCTTAGTAAAGATGATGTGCCACCTGAAAGTGGTGA  
 TACTACAGTGAAGAACTGAATCAAAGAAGGAACAGACCCAGAGCATGGGAAGAAAAACGTGGCAGA  
 GAAAAAGCCCAAGTTAAAGCAACAAATGAATCCGAAGACGAAATCCACAGCTGGTACCAATAGGAAAGA  
 AGACTCCAGCTAATGAAAAAGTAGAGATTCAAAAACATGCCACAGGAAAGAAAGTCCAGCAAAGAGTCC  
 TAATCCCAGCACACCTCGTGGGAAGAAAAGAAAGGCTTTGCCAGCATCTGAGACCCCAAAAGCTGCAGAG  
 TCTGAGACCCAGGAAAAGCCAGAGAAGAAAGCCAAAAATCAAAGAAGGGCAGTGAAGGAAAAAAGTCC  
 CTTGCTGGGAAAAAGATGCGAGACAGACTCCAAAAAGCCAGAGGCCAAGTTTTTACCACCTCCTAG  
 TAAATCTGTGAGAAAAGCTTCCACACCCCAAAAAATGGCCAAAAACCCAAAGTACCCAGTCGACC

**ACCGTACGCGGCCGCTCGAGCAGAACTCATCTCAGAAGAGGATCTGGCAGCAATGATATCTGGATT**  
**ACAAGGATGACGACGATAAGTTTAA**

**Protein Sequence:**

>RC212331 protein sequence  
 Red=Cloning site Green=Tags(s)

MEDSASASLSSAAATGTSTSTPAAPTARKQLDKEQVRKAVDALLTHCKSRKNNYGLLLNENESLFLMVVL  
 WKIPSKELRVRLTLPHSIRSDSEDICLFTKDEPNSTPEKTEQFYRKLKLNKHGIKTVSQIISLQTLKKEYK  
 SYEAKLRLLSSFDFFLTDARIRLLPSLIGRHFYQRKKVPVSVNLLSKNLSREINDCIGGTVLNIKSGS  
 CSAIRIGHVGMQIEHIIENIVAVTKGLSEKLPEKWESVKLLFVKTEKSAALPIFSSFVSNWDEATKRSLL  
 NKKKKEARRRERERNFQKQKRRKQARKTASVLSKDDVAPESGDTTVKPKESKKEQTPHEGKKRGR  
 GKAQVKATNESEDEIPQLVPIGKTPANEKVEIQKHATGKSPAKSPNPSTPRGKRRKALPASETPKAAE  
 SETPGKSPEKPKIKEEAVKEKSPSLGKKDARQTPKKPEAKFFTPSKSVRKASHTPKKWPKPKVPQST

**TRTRPLEQKLISEEDLAANDILDYKDDDDKV**

**Chromatograms:**

[https://cdn.origene.com/chromatograms/mk6462\\_d02.zip](https://cdn.origene.com/chromatograms/mk6462_d02.zip)

**Restriction Sites:**

Sgfl-MluI

**Cloning Scheme:**

Cloning sites used for ORF Shutting:



\* The last codon before the Stop codon of the ORF

**ACCN:** NM\_015659

**ORF Size:** 1470 bp

**OTI Disclaimer:** The molecular sequence of this clone aligns with the gene accession number as a point of reference only. However, individual transcript sequences of the same gene can differ through naturally occurring variations (e.g. polymorphisms), each with its own valid existence. This clone is substantially in agreement with the reference, but a complete review of all prevailing variants is recommended prior to use. [More info](#)

**OTI Annotation:** This clone was engineered to express the complete ORF with an expression tag. Expression varies depending on the nature of the gene.

**Components:** The ORF clone is ion-exchange column purified and shipped in a 2D barcoded Matrix tube containing 10ug of transfection-ready, dried plasmid DNA (reconstitute with 100 ul of water).

**Reconstitution Method:**

1. Centrifuge at 5,000xg for 5min.
2. Carefully open the tube and add 100ul of sterile water to dissolve the DNA.
3. Close the tube and incubate for 10 minutes at room temperature.
4. Briefly vortex the tube and then do a quick spin (less than 5000xg) to concentrate the liquid at the bottom.
5. Store the suspended plasmid at -20°C. The DNA is stable for at least one year from date of shipping when stored at -20°C.

**RefSeq:** [NM\\_015659.3](#)
**RefSeq Size:** 5137 bp

**RefSeq ORF:** 1473 bp

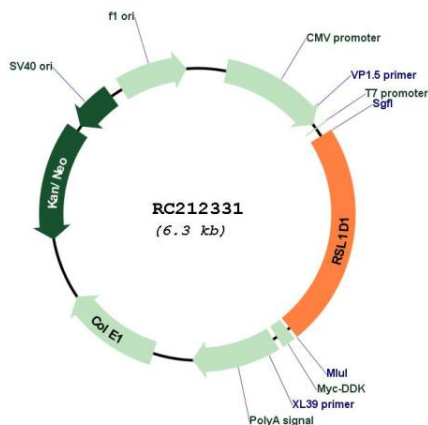
**Locus ID:** 26156

**UniProt ID:** [O76021](#)
**Cytogenetics:** 16p13.13

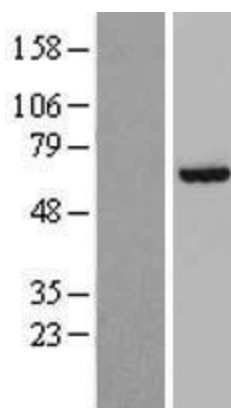
**MW:** 55 kDa

**Gene Summary:** Regulates cellular senescence through inhibition of PTEN translation. Acts as a pro-apoptotic regulator in response to DNA damage.[UniProtKB/Swiss-Prot Function]

**Product images:**



Circular map for RC212331



Western blot validation of overexpression lysate (Cat# [LY414420]) using anti-DDK antibody (Cat# [TA50011-100]). Left: Cell lysates from untransfected HEK293T cells; Right: Cell lysates from HEK293T cells transfected with RC212331 using transfection reagent MegaTran 2.0 (Cat# [TT210002]).