

Product datasheet for **RC212330**

CCT6A (NM_001009186) Human Tagged ORF Clone

Product data:

Product Type:	Expression Plasmids
Product Name:	CCT6A (NM_001009186) Human Tagged ORF Clone
Tag:	Myc-DDK
Symbol:	CCT6A
Synonyms:	CCT-zeta; CCT-zeta-1; CCT6; Cctz; HTR3; MoDP-2; TCP-1-zeta; TCP20; TCPZ; TTCP20
Mammalian Cell Selection:	Neomycin
Vector:	pCMV6-Entry (PS100001)
E. coli Selection:	Kanamycin (25 ug/mL)



[View online »](#)

ORF Nucleotide Sequence:

>RC212330 representing NM_001009186
 Red=Cloning site Blue=ORF Green=Tags(s)

TTTTGTAATACGACTCACTATAGGGCGGCCGGAATTCGTCGACTGGATCCGGTACCGAGGAGATCTGCC
 GCC**CGGATCGCC**

ATGGCGCGGTGAAGACCCTGAACCCCAAGGCCGAGGTGGCCCGAGCGCAGGCGGCGCTGGCGGTCAACA
 TCAGCGCAGCGGGGTCTGCAGGACGTGCTAAGGACCAACCTGGGGCCCAAGGGCACCATGAAGATGCT
 CGTTTCTGGCGCTGGAGACATCAAACCTTACTAAAGACGGCAATGTGCTGCTTACAGAAATGGGCCTTCAT
 CCTAGAATAATCACTGAAGGATTTGAAGCTGCAAAGGAAAAGGCCCTTCAGTTTTTGAAGAAGTCAAAG
 TAAGCAGAGAGATGGACAGGAAACACTTATAGATGTGGCCAGAACATCTCTTCTACTAAAGTTTCATGC
 TGAACCTGCAGATGTCTAACAGAGGCTGTAGTGGACTCCATTTTGGCCATTAAGGCAAGATGAACCT
 ATTGATCTCTTCATGATTGAGATCATGGAGATGAAACATAAATCTGAAACTGATAAAGCTTAATCAGAG
 GGCTTGTGGACCACGGAGCACGGCATCCTGATATGAAGAAAAGGGTGGAGGATGCATACATCCTCAC
 TTGTAACGTGTCATTAGAGTATGAGAAAACAGAAGTGAATCTGGCTTTTTTACAAGAGTGCAGAAGAG
 AGAGAAAACTCGTGAAAGCTGAAAGAAAATTCATTGAAGATAGGGTTAAAAAATAATAGAAGTAAAA
 GAAAGTCTGTGGCGATTGAGATAAAGGATTTGTTGTTAATCAAAGGGAATTGACCCCTTTTCCTT
 AGATGCTCTTTCAAAGAAGGCATAGTTGCTCTGCGCAGAGCTAAAAGGAGAAATATGGAGAGGCTGACT
 CTTGCTTGTGGTGGGTAGCCCTGAATCTTTGACGACCTAAGTCTGACTGCTTGGGACATGCAGGAC
 TTGTATATGAGTATACATTGGGAGAAGAGAAGTTACCTTTATTGAGAAATGTAACAACCTCGTTCTGT
 CACATTATTGATCAAAGGACCAATAAGCACACACTCACTCAGATCAAAGATGCAGTGAAGGACGGCTTG
 AGGGCTGTCAAAAATGCTATTGATGATGGCTGTGTGGTCCAGGTGCTGGTGGCGTGAAGTGGCAATGG
 CAGAAGCCCTGATTAACATAAGCCCAGTGAAGGGCAGGGCACAGCTTGGAGTCCAAGCATTGTCTGA
 TGCAATTGCTCATTATCCCAAGGTTCTTGCTCAGAAGTCTGGTTTTGACCTTCAGGAAAACATTAGTTAAA
 ATCAAGCAGAACATTCAGAATCAGGTCAGCTTGTGGGTGTGGACCTGAACACAGGTGAGCCAATGGTGG
 CAGCAGAAGTAGGCGTATGGGATAACTATTGTGTAAGAAAACAGCTTCTTCACTCCTGCACTGTGATTGC
 CACCAACATTCTTGGTTGATGAGATCATGCGAGCTGGAATGTCTTCTGAAAGGT

ACGCGTACGCGGCCGCTCGAGCAGAAACTCATCTCAGAAGAGGATCTGGCAGCAATGATATCCTGGATT
 ACAAGGATGACGACGATAAGGTTTAA

Protein Sequence:

>RC212330 representing NM_001009186
 Red=Cloning site Green=Tags(s)

MAAVKTLNPKAEVARAQAALAVNISAARGLQDVLRTNLGPKGTMKMLVSGAGDIKLTKDGNVLLHEMGLH
 PRIITEGFEEAAKEKALQFLEEKVSREMDRETLIDVARTSLRTRKVAELADVLTEAVVDSILAIKKQDEP
 IDLFMIEIMEMKHKSETDTSLIRGLVLDHGARHPDMKKRVEDAYILTCNVSLEYEKEVNSGFFYKSAEE
 REKLVKAERKFIEDRVKIIELKRKVCSDKGFVVINQKIDPFSLDALSKEGIVALRRARRRNERLT
 LACGGVALNSFDDLSPDCLGHAGLVYVYTLGEEKFTFIEKCNNPRSVTLTIKGNPKHTLTQIKDAVRDGL
 RAVKNAIDDGCVVPGAGAVEVAMAEALIKHKPSVKGRAQLGVQAFADALLIIPKVLAQNSGFDLQETLVK
 IQAEHSESGQLVGVDLNTGPMVAAEVGVDNYCVKKQLLHSCVTIATNILLVDEIMRAGMSSLKG

TRTRPLEQKLISEEDLAANDILDYKDDDDKV

Chromatograms:

https://cdn.origene.com/chromatograms/mk8026_b05.zip

Restriction Sites:

Sgfl-MluI

Cloning Scheme:

Cloning sites used for ORF Shutting:



* The last codon before the Stop codon of the ORF

ACCN: NM_001009186

ORF Size: 1458 bp

OTI Disclaimer: The molecular sequence of this clone aligns with the gene accession number as a point of reference only. However, individual transcript sequences of the same gene can differ through naturally occurring variations (e.g. polymorphisms), each with its own valid existence. This clone is substantially in agreement with the reference, but a complete review of all prevailing variants is recommended prior to use. [More info](#)

OTI Annotation: This clone was engineered to express the complete ORF with an expression tag. Expression varies depending on the nature of the gene.

Components: The ORF clone is ion-exchange column purified and shipped in a 2D barcoded Matrix tube containing 10ug of transfection-ready, dried plasmid DNA (reconstitute with 100 ul of water).

Reconstitution Method:

1. Centrifuge at 5,000xg for 5min.
2. Carefully open the tube and add 100ul of sterile water to dissolve the DNA.
3. Close the tube and incubate for 10 minutes at room temperature.
4. Briefly vortex the tube and then do a quick spin (less than 5000xg) to concentrate the liquid at the bottom.
5. Store the suspended plasmid at -20°C. The DNA is stable for at least one year from date of shipping when stored at -20°C.

RefSeq: [NM_001009186.2](#)
RefSeq Size: 2547 bp

RefSeq ORF: 1461 bp

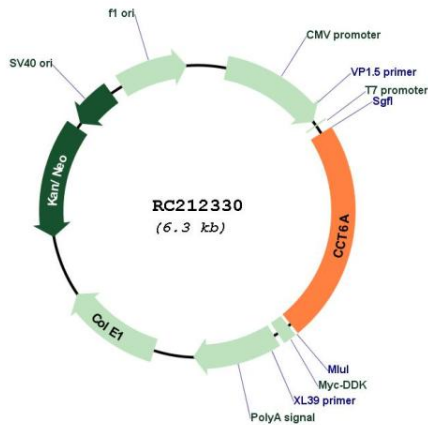
Locus ID: 908

UniProt ID: [P40227](#)
Cytogenetics: 7p11.2

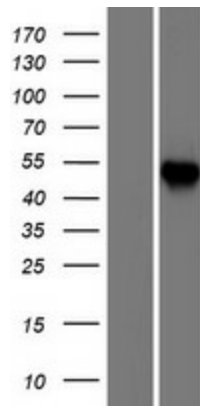
MW: 53.1 kDa

Gene Summary: The protein encoded by this gene is a molecular chaperone that is a member of the chaperonin containing TCP1 complex (CCT), also known as the TCP1 ring complex (TRiC). This complex consists of two identical stacked rings, each containing eight different proteins. Unfolded polypeptides enter the central cavity of the complex and are folded in an ATP-dependent manner. The complex folds various proteins, including actin and tubulin. Alternate transcriptional splice variants of this gene, encoding different isoforms, have been characterized. In addition, several pseudogenes of this gene have been located. [provided by RefSeq, Jun 2010]

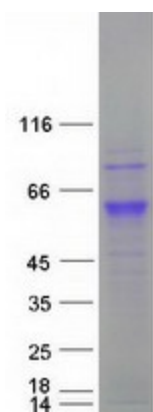
Product images:



Circular map for RC212330



Western blot validation of overexpression lysate (Cat# [LY422908]) using anti-DDK antibody (Cat# [TA50011-100]). Left: Cell lysates from untransfected HEK293T cells; Right: Cell lysates from HEK293T cells transfected with RC212330 using transfection reagent MegaTran 2.0 (Cat# [TT210002]).



Coomassie blue staining of purified CCT6A protein (Cat# [TP312330]). The protein was produced from HEK293T cells transfected with CCT6A cDNA clone (Cat# RC212330) using MegaTran 2.0 (Cat# [TT210002]).