

Product datasheet for **RC212324**

RED1 (ADARB1) (NM_015833) Human Tagged ORF Clone

Product data:

Product Type:	Expression Plasmids
Product Name:	RED1 (ADARB1) (NM_015833) Human Tagged ORF Clone
Tag:	Myc-DDK
Symbol:	RED1
Synonyms:	ADAR2; DRABA2; DRADA2; NEDHYMS; RED1
Mammalian Cell Selection:	Neomycin
Vector:	pCMV6-Entry (PS100001)
E. coli Selection:	Kanamycin (25 ug/mL)



[View online »](#)

ORF Nucleotide Sequence:

>RC212324 representing NM_015833
 Red=Cloning site Blue=ORF Green=Tags(s)

TTTTGTAATACGACTCACTATAGGGCGGCCGGGAATTCGTCGACTGGATCCGGTACCGAGGAGATCTGCC
 GCC**CGGATCGCC**

ATGGATATAGAAGATGAAGAAAACATGAGTTCAGCAGCACTGATGTGAAGGAAAACCGCAATCTGGACA
 ACGTGTCCCCAAGGATGGCAGCACACCTGGGCCTGGCGAGGGCTCTCAGCTCTCCAATGGGGTGGTGG
 TGGCCCCGGCAGAAAGCGGCCCTTGAGGAGGGCAGCAATGGCCACTCCAAGTACCGCTGAAGAAAAGG
 AGGAAAACACCAGGGCCCGTCTCCCAAGAACGCCCTGATGCAGCTGAATGAGATCAAGCCTGGTTTGC
 AGTACACACTCTGTCCCAGACTGGGCCGTGCACGCGCCTTTGTTTGTATGTCTGTGGAGGTGAATGG
 CCAGGTTTTTGGGGCTCTGGTCCACAAAAGAAAAGGCAAACTCCATGCTGCTGAGAAGGCCCTTGAGG
 TCTTTCGTTTCAGTTTCTAATGCCTCTGAGGCCACCTGGCCATGGGGAGGACCTGTCTGTCAACACGG
 ACTTCACATCTGACCAGGCCGACTTCCCTGACACGCTCTTCAATGGTTTTGAAACTCCTGACAAGGCCGA
 GCCTCCCTTTTACGTGGGCTCCAATGGGGATGACTCCTTCAGTCCAGCGGGGACCTCAGCTTGTCTGCT
 TCCCCGGTGCCTGCCAGCCTAGCCAGCCTCCTCTCCCTGCTTACCACCATTCCACCCCGAGTGGGA
 AGAATCCCGTGATGATCTTGAACGAAGTGCGCCAGGACTCAAGTATGACTTCTCTCCGAGAGCGGGGA
 GAGCCATGCCAAGAGCTTCGTATGTCTGTGGTGGTGGATGGTCAAGTCTTTGAAGGCTCGGGGAGAAAAC
 AAGAAGCTTGCCAAGGCCGGGCTGCGCAGTCTGCCCTGGCCGCATTTTAACTTGCACTTGGATCAGA
 CGCCATCTCGCCAGCCTATTCAGTGGAGGTCTTCAGCTGCATTTACCGCAGGTTTTAGCTGACGCTGT
 CTCACGCTGGTCTGGTAAGTTTGGTACCTGACCGACAATCTCTCCCTCACGCTCGCAGAAAA
 GTGCTGGCTGGAGTCGTATGACAACAGGCACAGATGTTAAAGATGCCAAGGTGATAAGTGTCTACAG
 GAACAAAATGTATTAATGGTGAATACATGAGTATCGTGGCCTTGCAATTAATGACTGCCATGAGAAAT
 AATATCTCGGAGATCCTTGCTCAGATTTCTTATACACAACCTTGAGCTTTACTTAAATAACAAGATGAT
 CAAAAAAGATCCATCTTTCAGAAATCAGAGCGAGGGGGTTTAGGCTGAAGGAGAATGTCCAGTTTCATC
 TGTACATCAGCACCTCTCCCTGTGGAGATGCCAGAATCTTCTCACCACATGAGCCAATCCTGGAAGGGTC
 TCGCTCTTACACCAGGCTGGAGTGCAGTGGTGAATCATGGCTCACTGCAGCCTCGACCTCCTGGGCTC
 TTAAGCGATCCTTCCACCTCAACCTTCCAAGGAGCTGGGACTACAGAACCAGCAGATAGACACCCAAATC
 GTAAAGCAAGAGGACAGCTACGGACAAAATAGAGTCTGGTGGGGGACGATTCCAGTGCCTCCAATGC
 GAGCATCAAACGTGGGACGGGTGCTGCAAGGGGAGCGGCTGCTCACCATGCTCCTGCAGTACAAGATT
 GCACGCTGGAACGTGGTGGCATCCAGGGATCCCTGCTCAGCATTTCGTTGGAGCCATTTACTTCTCGA
 GCATCATCCTGGGACGCTTTACCACGGGACACCTTTCCAGGGCCATGTACCAGCGGATCTCCAACAT
 AGAGGACCTGCCACCTCTACACCTCAACAAGCCTTTGCTCAGTGGCATCAGCAATGCAGAAGCACGG
 CAGCCAGGGAAGGCCCAACTCAGTGTCAACTGGACGGTAGGCGACTCCGCTATTGAGGTCAACAACG
 CCACGACTGGGAAGGATGAGCTGGGCCGCGCTCCCGCTGTGTAAGCACGCGTTGACTGTCGCTGGAT
 GCGTGTGCACGGCAAGGTTCCCTCCCACTTACTACGCTCCAAGATTACCAAGCCCAACGTGTACCATGAG
 TCCAAGCTGGCGGCAAGGAGTACCAGGCCCAAGGCGCGTCTGTTACAGCCTTCATCAAGCGGGGGC
 TGGGGGCTGGTGGAGAAGCCACCGAGCAGGACCAAGTCTCACTCACGCC

AGCGGACCGACGCGTACGCGGCCGCTCGAGCAGAAACTCATCTCAGAAGAGGATCTGGCAGCAAATGATATCC
 TGGATTACAAGGATGACGACGATAAGGTTTAA

Protein Sequence: >RC212324 representing NM_015833
Red=Cloning site Green=Tags(s)

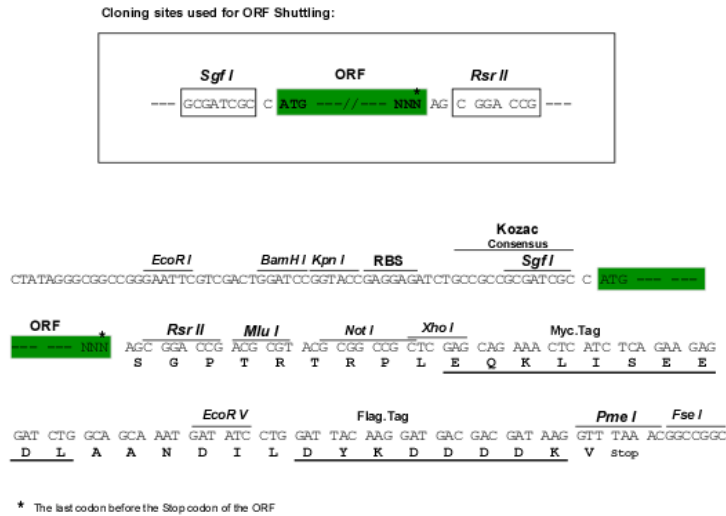
```
MDIEDEENMSSSSTDVKENRNLDNVSPKDGSTPGPEGSQLSNGGGGGPGRKRPLEEGSNHGSKYRLKKR
RKTTPGPVLPKNALMQLNEIKPGLQYTLLSQTGPVHAPLFVMSVEVNGQVFEGSGPTKKKAKLHAAEKALR
SFVQFPNASEAHLAMGRTLSVNTDFTSDQADFPDTLFGNFETPDKAEPFVYVGSNGDDSFSSSGDLSLSA
SPVPASLAQPPLPVLPPFPSPGKNPVMILNELRPGLKYDFLSESGESHAKSFVMSVVVDGQFEGSGRN
KKLAKARAAQSALAAIFNLHLDQTPSRQPIPSEGLQLHLPQVLADAVSRLVLGKFGDLTDNFSSPHARRK
VLAGVVMTTGTDVKAIVISVSTGKTCINGEYMSDRGLALNDCHAEIISRRSLLRFLYTQLELYLNKDD
QKRSIFQKSERGGFRLKENVQFHLYISTSPCGDARIFSPHEPILEGSRSYTQAGVQWCNHGSLQPRPPGL
LSDPSTSTFQAGTTEPADRHPNRKARGQLRTKIESGEGTIPVRSNASIQTDGVLQGERLLTMSCSDKI
ARWNVVGIQGSLLSIFVEPIYFSSIIILGSLYHGDHL SRAMYQRISNIEDLPPLYTLNKPLLSGISNAEAR
QPGKAPNF SVNWTVGDSAIEVINATTGKDELGRASRLCKHALYCRWMRVHGKVP SHLLRSKITKPNVYHE
SKLAAKEYQAAKARLFTAFIKAGLGAWVEKPTEQDQFSLTP
```

SGPTRRRLEQKLI SEEDLAANDILDYKDDDDKV

Chromatograms: https://cdn.origene.com/chromatograms/mk8026_c09.zip

Restriction Sites: SgfI-RsrII

Cloning Scheme:



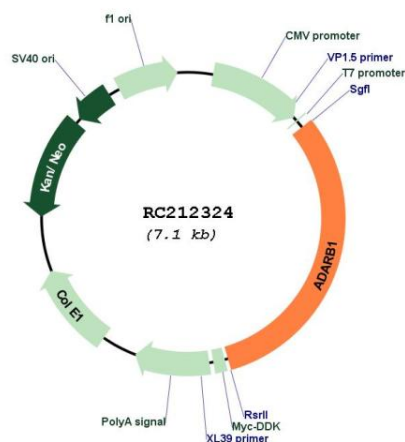
ACCN: NM_015833

ORF Size: 2223 bp

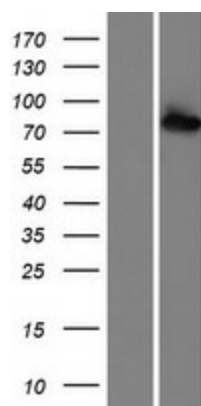
OTI Disclaimer: The molecular sequence of this clone aligns with the gene accession number as a point of reference only. However, individual transcript sequences of the same gene can differ through naturally occurring variations (e.g. polymorphisms), each with its own valid existence. This clone is substantially in agreement with the reference, but a complete review of all prevailing variants is recommended prior to use. [More info](#)

OTI Annotation: This clone was engineered to express the complete ORF with an expression tag. Expression varies depending on the nature of the gene.

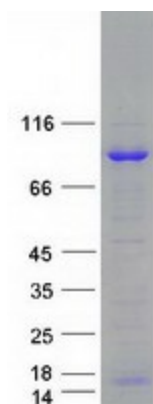
Components:	The ORF clone is ion-exchange column purified and shipped in a 2D barcoded Matrix tube containing 10ug of transfection-ready, dried plasmid DNA (reconstitute with 100 ul of water).
Reconstitution Method:	<ol style="list-style-type: none">1. Centrifuge at 5,000xg for 5min.2. Carefully open the tube and add 100ul of sterile water to dissolve the DNA.3. Close the tube and incubate for 10 minutes at room temperature.4. Briefly vortex the tube and then do a quick spin (less than 5000xg) to concentrate the liquid at the bottom.5. Store the suspended plasmid at -20°C. The DNA is stable for at least one year from date of shipping when stored at -20°C.
RefSeq:	NM_015833.4
RefSeq Size:	5035 bp
RefSeq ORF:	2226 bp
Locus ID:	104
UniProt ID:	P78563
Cytogenetics:	21q22.3
Domains:	DSRM, A_deamin
Protein Families:	Druggable Genome
MW:	80.6 kDa
Gene Summary:	This gene encodes the enzyme responsible for pre-mRNA editing of the glutamate receptor subunit B by site-specific deamination of adenosines. Studies in rat found that this enzyme acted on its own pre-mRNA molecules to convert an AA dinucleotide to an AI dinucleotide which resulted in a new splice site. Alternative splicing of this gene results in several transcript variants, some of which have been characterized by the presence or absence of an ALU cassette insert and a short or long C-terminal region. [provided by RefSeq, Jul 2008]

Product images:


Circular map for RC212324



Western blot validation of overexpression lysate (Cat# [LY414364]) using anti-DDK antibody (Cat# [TA50011-100]). Left: Cell lysates from untransfected HEK293T cells; Right: Cell lysates from HEK293T cells transfected with RC212324 using transfection reagent MegaTran 2.0 (Cat# [TT210002]).



Coomassie blue staining of purified ADARB1 protein (Cat# [TP312324]). The protein was produced from HEK293T cells transfected with ADARB1 cDNA clone (Cat# RC212324) using MegaTran 2.0 (Cat# [TT210002]).