

Product datasheet for RC212323

Nudel (NDEL1) (NM_001025579) Human Tagged ORF Clone

Product data:

Product Type:	Expression Plasmids
Product Name:	Nudel (NDEL1) (NM_001025579) Human Tagged ORF Clone
Tag:	Myc-DDK
Symbol:	Nudel
Synonyms:	EOPA; MITAP1; NDE1L1; NDE2; NUDEL
Mammalian Cell Selection:	Neomycin
Vector:	pCMV6-Entry (PS100001)
E. coli Selection:	Kanamycin (25 ug/mL)
ORF Nucleotide Sequence:	>RC212323 representing NM_001025579 Red=Cloning site Blue=ORF Green=Tags(s)

TTTTGTAATACGACTCACTATAGGGCGGCCGGAATTCGTCGACTGGATCCGGTACCGAGGAGATCTGCC
GCC**CGATCGCC**

ATGGATGGTGAAGATATACCAGATTTTTCAAGTTTAAAGGAGGAACTGCTTATTGGAAGGAACTTCTCT
TGAAGTATAAGCAAAGCTTCCAGGAAGCTCGGGATGAGCTAGTTGAATCCAGGAAGGAAGCAGAGAATT
AGAAGCAGAGTTGGAGGCACAATTAGTACAGGCTGAACAAAGAAATAGAGACTTGCAGGCTGATAACCAA
AGACTGAAATATGAAGTGGAGGCATTAAGGAGAAGCTAGAGCATCAATATGCACAGAGCTATAAGCAGG
TCTCAGTGTAGAAAGATGATTTAAGTCAGACTCGGGCCATTAAGGAGCAGTTGCATAAGTATGTGAGAGA
GCTGGAGCAGGCCAACGACGACCTGGAGCGAGCCAAAAGGGCAACAATAGTTTCACTGGAAGACTTTGAA
CAAAGGCTAAACCAGGCCATTGAACGAAATGCATTTTTAGAAAAGTGAAGTGGATGAAAAGGAATCTTTGT
TGGTCTCTGTACAGAGGTTAAAGGATGAAGCAAGAGATTTAAGGCAAGAACTAGCAGTTCGGGAAAGACA
ACAGGAAGTAACTAGAAAAGTCCGCTCCTAGCTCTCAACTCTAGACTGTGAAAAGATGGACTCCGCCGTC
CAAGCATCACTTTCTTTGCCAGCTACCCCTGTTGGCAAAGGAACGGAGAACAATTTTCTTACCAGAAAG
CTATACCAAATGGTTTTGGTACCAGTCCACTAACTCCCTCTGCTAGGATATCAGCACTAAACATCGTGGG
GGATCTTTACGAAAAGTAGGGGCTTTAGAATCCAAATTAGCAGCTTGCAGGAATTTTGCAGGACCAA
GCATCACGAAAATCCTATATTTACAGGAATGTTAACTGTGGGGTCTGAATGGCAATGGCAGAAAGTTCT
CTCGATCAGGGCATACTTTCTTCGACAAAGGGCAAGAAAAGTCATATTTCCACGTTGTTTCATGGG
GCAG

ACGCGTACGCGGCCGCTCGAGCAGAACTCATCTCAGAAGAGGATCTGGCAGCAATGATATCCTGGATT
ACAAGGATGACGACGATAAGGTTTAA



[View online »](#)

Reconstitution Method:

1. Centrifuge at 5,000xg for 5min.
2. Carefully open the tube and add 100ul of sterile water to dissolve the DNA.
3. Close the tube and incubate for 10 minutes at room temperature.
4. Briefly vortex the tube and then do a quick spin (less than 5000xg) to concentrate the liquid at the bottom.
5. Store the suspended plasmid at -20°C. The DNA is stable for at least one year from date of shipping when stored at -20°C.

RefSeq: [NM_001025579.3](#)

RefSeq Size: 2420 bp

RefSeq ORF: 987 bp

Locus ID: 81565

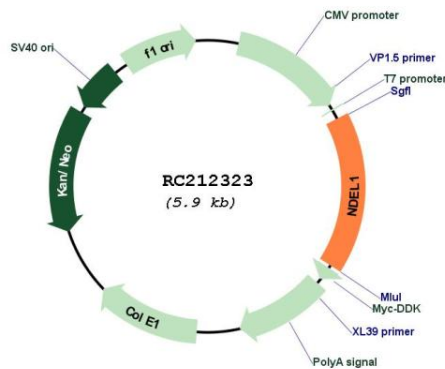
UniProt ID: [Q9GZM8](#)

Cytogenetics: 17p13.1

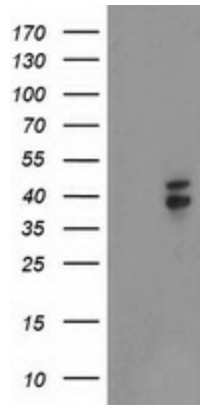
MW: 36.9 kDa

Gene Summary: This gene encodes a coiled-coil protein that plays a role in multiple processes including cytoskeletal organization, cell signaling and neuron migration, outgrowth and maintenance. Alternatively spliced transcript variants encoding multiple isoforms have been observed for this gene, and a pseudogene of this gene is located on the long arm of chromosome X. [provided by RefSeq, Mar 2012]

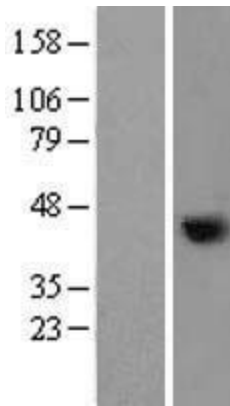
Product images:



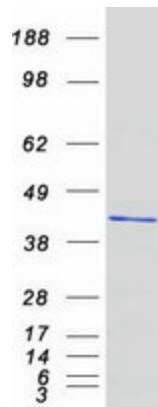
Circular map for RC212323



HEK293T cells were transfected with the pCMV6-ENTRY control (Cat# [PS100001], Left lane) or pCMV6-ENTRY NDEL1 (Cat# RC212323, Right lane) cDNA for 48 hrs and lysed. Equivalent amounts of cell lysates (5 ug per lane) were separated by SDS-PAGE and immunoblotted with anti-NDEL1 (Cat# [TA503353]). Positive lysates [LY422448] (100ug) and [LC422448] (20ug) can be purchased separately from OriGene.



Western blot validation of overexpression lysate (Cat# [LY422448]) using anti-DDK antibody (Cat# [TA50011-100]). Left: Cell lysates from untransfected HEK293T cells; Right: Cell lysates from HEK293T cells transfected with RC212323 using transfection reagent MegaTran 2.0 (Cat# [TT210002]).



Coomassie blue staining of purified NDEL1 protein (Cat# [TP312323]). The protein was produced from HEK293T cells transfected with NDEL1 cDNA clone (Cat# RC212323) using MegaTran 2.0 (Cat# [TT210002]).