

## Product datasheet for **RC212316**

### **NPTX1 (NM\_002522) Human Tagged ORF Clone**

#### **Product data:**

Product Type:	Expression Plasmids
Product Name:	NPTX1 (NM_002522) Human Tagged ORF Clone
Tag:	Myc-DDK
Symbol:	NPTX1
Synonyms:	NP1
Mammalian Cell Selection:	Neomycin
Vector:	pCMV6-Entry (PS100001)
E. coli Selection:	Kanamycin (25 ug/mL)



[View online »](#)

**ORF Nucleotide Sequence:**

>RC212316 representing NM\_002522  
 Red=Cloning site Blue=ORF Green=Tags(s)

TTTTGTAATACGACTCACTATAGGGCGGCCGGAATTCGTCGACTGGATCCGGTACCGAGGAGATCTGCC  
 GCC**CGATCGCC**

ATGCCGGCCGGCCGCGCCGCGCACCTGTGCGCTGCTCGCCCTCTGCCTCCTGGGCGCCGGGGCCAGG  
 ATTTTCGGGCCGACGCGCTTCATCTGCACCTCGGTGCCCGTGGACGCCGACATGTGCGCCGCTCCGTGGC  
 CGCCGGCCGGCCGAGGAGCTCCGGAGCAGCGTCTGCAGCTCCGCGAGACGGTCTGCAGCAGAAGGAG  
 ACCATCTGAGCCAGAAGGAGACCATCCGCGAGCTGACCGCAAGCTGGGCGCTGCGAGAGCCAGAGCA  
 CGCTGGACCCCGAGCCGCGGAGGCCGGGCGGGCGGCCGAAGCAGCCGGCTCGGGCAAGAACAC  
 CATGGCGACCTGTCCCGACACCGCCGCGAGACGCTCAGCCAACCTCGGGCAAACCTTTCGCAATCGCTC  
 AAAACCCGCTGGAGAACCTCGAGCAGTACAGCCGCTCAATTCCTCCAGCCAGACCAACAGCCTCAAGG  
 ATCTGCTGCAGAGCAAGATCGATGAGCTGGAGAGGCAGGTGCTGTCCCGGTGAACACCTGGAGGAGGG  
 CAAGGGGGGCCAGGAACGACACCGAGGAGAGGGTCAAGATCGAGACCGCCTGACCTCCCTGCACCAG  
 CGGATCAGCGAGCTCGAGAAAGTCAAGAACACACCGCCCTGGAGACAAGTTCCAGCTCACATCCAC  
 TGGCGACCAACTATATGTATGCCAAGGTGAAGAAGAGCCTGCCAGAGATGTACGCCCTTACTGTCTGCAT  
 GTGGCTCAAGTCCAGCGCCACGCCAGGTGTGGCACGCCCTTCTCCTACGCTGTGCCCGCCAGGCCAAC  
 GAGCTGGTCTCATTGAGTGGGGCAACAACCCATGGAGATCCTCATCAATGACAAGGTGGCCAAGTTGC  
 CTTTTGTCATCAATGATGGCAAGTGGCACCACATCTGTGTACCTGGACCACCGGGACGGGGTCTGGGA  
 GGCCTACCAGGATGGCACGAGGTGGCAGTGGCGAGAATTGGCGCCTATCACCCATCAAGCCCGAG  
 GCGTGTGGTGTGGCCAGGAGCAGGACACTCTGGTGGTGGGTTTGTATGCCACCCAGGCATTTGTGG  
 GTGAGCTGGCCCACTTCAACATCTGGGACCGCAAGCTGACCCCGGGGAGGTGTACAACCTGGCCACCTG  
 CAGCACCAAGGCTGTCCGGCAATGTATCGCCTGGGCTGAATCCCACATCGAGATCTACGGAGGGGCC  
 ACCAAGTGGACCTTCGAGGCCTGTGCCAGATCAAC

**ACGCGT**ACGCGGCCGCTCGAGCAGAACTCATCTCAGAAGAGGATCTGGCAGCAATGATATCCTGGATT  
 ACAAGGATGACGACGATAAGGTTTAA

**Protein Sequence:**

>RC212316 representing NM\_002522  
 Red=Cloning site Green=Tags(s)

MPAGRAARTCALLALCLLGAGAQDFGPTRFICTSVPVDADMCAASVAAGGAEELRSSVLQLRETVLQQKE  
 TILSQKETIRELTAKLGRCESQSTLDPGAGEARAGGGRKQPGSGKNTMGDL SRTPAAETLSQLGQTLQSL  
 KTRLENLEQYSRLNSSQTNSLKDLLQSKIDELERQVLSRVNTLEEGKGGPRNDTEERVKIETAL TSLHQ  
 RISELEKQKDNRPQDKFQLTFPLRTNYMYAKVKKSLPEMYAFTVCMWLKSSATPGVGTPTFSYAVPGQAN  
 ELVLI EWGNNPMEILINDKVAKLPFVINDGKWHHICVTWTRDGVWEAYQDGTQGGSGENLAPYHPKIPQ  
 GVLVLGQEQDTLGGGFDATQAFVGE LAHFNIWDRKLTPEVYNLATCSTKALSGNVIAWAESHIEIYGGA  
 TKWTFEACRQIN

**TR**TRPLEQKLISEEDLAANDILDYKDDDDKV

**Chromatograms:**

[https://cdn.origene.com/chromatograms/mg3362\\_a02.zip](https://cdn.origene.com/chromatograms/mg3362_a02.zip)

**Restriction Sites:**

Sgfl-Mlul

Cloning Scheme:



ACCN: NM\_002522

ORF Size: 1296 bp

OTI Disclaimer: The molecular sequence of this clone aligns with the gene accession number as a point of reference only. However, individual transcript sequences of the same gene can differ through naturally occurring variations (e.g. polymorphisms), each with its own valid existence. This clone is substantially in agreement with the reference, but a complete review of all prevailing variants is recommended prior to use. [More info](#)

OTI Annotation: This clone was engineered to express the complete ORF with an expression tag. Expression varies depending on the nature of the gene.

Components: The ORF clone is ion-exchange column purified and shipped in a 2D barcoded Matrix tube containing 10ug of transfection-ready, dried plasmid DNA (reconstitute with 100 ul of water).

Reconstitution Method:

1. Centrifuge at 5,000xg for 5min.
2. Carefully open the tube and add 100ul of sterile water to dissolve the DNA.
3. Close the tube and incubate for 10 minutes at room temperature.
4. Briefly vortex the tube and then do a quick spin (less than 5000xg) to concentrate the liquid at the bottom.
5. Store the suspended plasmid at -20°C. The DNA is stable for at least one year from date of shipping when stored at -20°C.

Note: Plasmids are not sterile. For experiments where strict sterility is required, filtration with 0.22um filter is required.

RefSeq: [NM\\_002522.4](#)

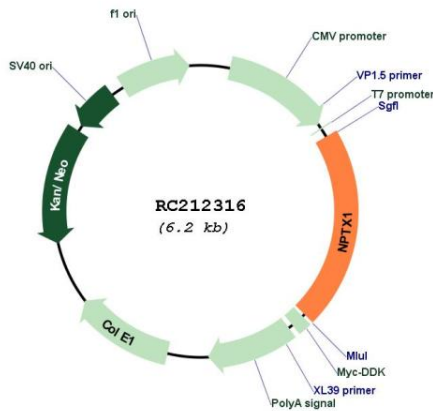
RefSeq Size: 5441 bp

RefSeq ORF: 1299 bp

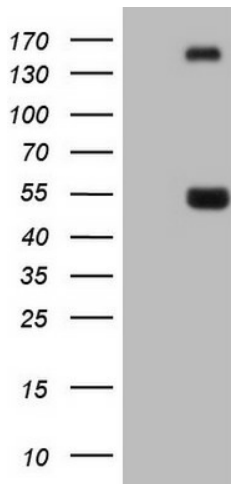
Locus ID: 4884

**UniProt ID:** [Q15818](#)  
**Cytogenetics:** 17q25.3  
**Protein Families:** Secreted Protein  
**MW:** 47.12 kDa  
**Gene Summary:** NPTX1 is a member of the neuronal pentraxin gene family. Neuronal pentraxin 1 is similar to the rat NP1 gene which encodes a binding protein for the snake venom toxin taipoxin. Human NPTX1 mRNA is exclusively localized to the nervous system. [provided by RefSeq, Jul 2008]

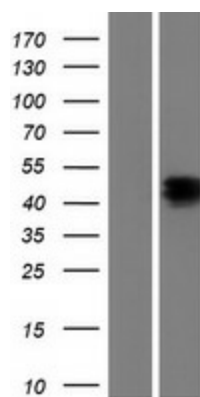
**Product images:**



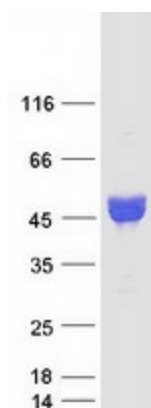
Circular map for RC212316



HEK293T cells were transfected with the pCMV6-ENTRY control (Cat# [PS100001], Left lane) or pCMV6-ENTRY NPTX1 (Cat# RC212316, Right lane) cDNA for 48 hrs and lysed. Equivalent amounts of cell lysates (5 ug per lane) were separated by SDS-PAGE and immunoblotted with anti-NPTX1 (Cat# [TA806513]). Positive lysates [LY419274] (100ug) and [LC419274] (20ug) can be purchased separately from OriGene.



Western blot validation of overexpression lysate (Cat# [LY419274]) using anti-DDK antibody (Cat# [TA50011-100]). Left: Cell lysates from untransfected HEK293T cells; Right: Cell lysates from HEK293T cells transfected with RC212316 using transfection reagent MegaTran 2.0 (Cat# [TT210002]).



Coomassie blue staining of purified NPTX1 protein (Cat# [TP312316]). The protein was produced from HEK293T cells transfected with NPTX1 cDNA clone (Cat# RC212316) using MegaTran 2.0 (Cat# [TT210002]).