

Product datasheet for **RC212315**

ENTPD7 (NM_020354) Human Tagged ORF Clone

Product data:

Product Type:	Expression Plasmids
Product Name:	ENTPD7 (NM_020354) Human Tagged ORF Clone
Tag:	Myc-DDK
Symbol:	ENTPD7
Synonyms:	LALP1
Mammalian Cell Selection:	Neomycin
Vector:	pCMV6-Entry (PS100001)
E. coli Selection:	Kanamycin (25 ug/mL)



[View online »](#)

ORF Nucleotide Sequence:

>RC212315 ORF sequence
 Red=Cloning site Blue=ORF Green=Tags(s)

TTTTGTAATACGACTCACTATAGGGCGGCCGGAATTCGTCGACTGGATCCGGTACCGAGGAGATCTGCC
 GCC**CGGATCGCC**

ATGGCTAGGATCAGTTTTTCTACCTCTGCCAGCCTCCTGGTACTTCACTGTGCCACAGTGAGTCCAT
 TTCTCCGTCAGCGGGTGGCATTCTGGGACTCTTCTTCATATCCTGTCTCCTTTTACTTATGTTAATCAT
 AGACTTTCGACATTGGAGTGCTTCACTACCACGAGATAGGCAATACGAAAGGTATTTGGCTCGAGTAGGG
 GAGCTTGAAGCTACTGACACTGAAGACCCAAATCTGAATTATGGACTTGTGTTGACTGTGGCAGCAGTG
 GTTCCCGGATTTTGTATTTCTGGCCAAACATAATGGGAACCCCATGACTTGTGGACATCAAACA
 GATGAGAGACCGCAACAGCCAACAGTGGTTAAAAAATCAAGCCAGGAATCTCTGCAATGGCAGACACT
 CCAGAACATGCCAGTGATTACCTTCGCTCTGCTGAGCTTTGCTGCTGCTCATGTGCCGTGAAGAAGC
 ACAAGGAGACCCCTTTACATCCTCTGCACAGCAGGCATGAGGCTTCTCCCTGAGAGGAAGCAGTTGGC
 TATCTTGGCTGACCTAGTAAAGATTTACCACTGGAGTTGACTTCTCTTTTACAGTCTCAAGCAGAA
 GTGATCTCTGGGAAGCAGGAAGGGTTTATGCATGGATTGGAATCAACTTTGTTTTGGGAAGATTGACC
 ACGAGGATGAATCAGATGCTGAGGCTACCCAGGAATTGGCAGCAGGACGGAGAAGGACAGTAGGGTACT
 GGATATGGGAGGAGCCTCTCCAAATTGCTTATGAAGTTCTACCTCAACCTCTGTCTTCTGCAAAAG
 CAGGAAGAAGCTGCCAAGATCCTGCTGGCTGAGTTCAACCTGGGCTGTGATGTGCAACACACTGAACACG
 TGTACAGGGTTTATGTCACAACCTTTCTGGGTTTCGGAGGCAACTTTGCCCGGCAGCGCTACGAAGACCT
 TGTCTGAATGAACTCTTAACAAAAACAGATTGCTTGGTCAGAAGACAGGTCTGAGTCCCGACAATCCA
 TTTCTGGATCCCTGCCTGCCAGTGGGACTCACAGATGTGGTGGAGAGGAACAGCCAAGTCTTACATGTCC
 GAGGAAGAGGAGACTGGGTGTCTTGTGGGCAATGCTGAGCCCCCTGCTGGCTCGCTCCAACACAGCCA
 GGCTCACTCAATGGCATATATCAATCGCTATTGACTTCAACAACAGCGAGTTCTACGGCTTCTCTGAG
 TTTTTTTATTGTACAGAGGATGTGTTGCGCATTGGTGGCCGCTACCATGGGCCAACATTTGCCAAGGCTG
 CTCAGGATTACTGTGGCATGGCTTGGTCCGTAACCTCAGAGATTCAAGAATGGCCTCTTTTATCACA
 TGCAGATGAGCATCGACTCAAATATCAGTGTTTTAAATCGGCTTGGATGTACCAAGTCTTACATGAAGGA
 TTCCACTTTCCCTATGACTACCCAAACCTGCGGACAGCCAGCTGGTGTATGACCAGAGGTTTCAAGTGA
 CGCTGGGAGCCATTCTATATAAAACACGATTCTTACCCTCAGGGATCTTCGGCAGGAAGGTGTCGAC
 AGCCCATGGTAGCTGGTCCGTCTCTCTTTGTATAACAACACTATCTCTTTTGCCTGTATCCTGGTG
 GTGCTACTGGCCATCTTCTATACCTTCTGCGGCTACGCCGAATTCACCACGACAAACAGAGCCTCAG
 CTCATTGGACTTGTGTGGCTGAAGAGGTGGTCCCATGATGGGAGTACAGGTGGGGCCG

ACGCGTACGCGGCCGCTCGAGCAGAAACTCATCTCAGAAGAGGATCTGGCAGCAAATGATATCCTGGATT
 ACAAGGATGACGACGATAAGGTTTAA

Protein Sequence:

>RC212315 protein sequence
 Red=Cloning site Green=Tags(s)

MARISFSYLCPASWYFTVPTVSPFLRQRVAFLGLFFISCLLLLMLIIDFRHWSASLPRDRQYERYLARVG
 ELEATDTEPNLNYGLVVDGSSGSRIFVYFWPRHNGNPHDLLDIKQMRDRNSQPVVKKIKPGISAMADT
 PEHASDYLRPLLSFAAAHVPVKKHKETPLYILCTAGMRLPERKQLAILADLVKDLPLEFDLFSQSQAE
 VISGKQEGVYAWIGINFVLGRFDHEDESDAEATQELAAGRRTVGILDMGGASLQIAYEVPTSTSVLPAK
 QEEAAKILLAEFNLGCDVQHTHEVYRVYVTTFLGFGGNFARQRYEDLVNETLNKNRLLGQKTGLSPDNP
 FLDPCLPVGLTDVVERNSQVLHVRGRGDWVSCGAMLSPLLARSNTSQASLNGIYQSPIDFNNSEFYGFSE
 FFYCTEDVLRIGGRYHGPTFAKAAQDYCGMAWSVLTQRFKNGLFSSHADEHRLKYQCFKSAWYQVLHEG
 FHFPYDYNLRTAQLVYDREVQWTLGAILYKTRFLPLRDLRQEGVRQAHGSWFRLSFVYNYHLFFACILY
 VLLAIFLYLLRRLRIHHRQTRASAPLDLLWLEEVVPMGVQVGP

TRTRPLEQKLISEEDLAANDILDYKDDDDKV

Chromatograms:

https://cdn.origene.com/chromatograms/mk6443_g12.zip

Restriction Sites: SgfI-MluI

Cloning Scheme:



ACCN: NM_020354

ORF Size: 1812 bp

OTI Disclaimer: The molecular sequence of this clone aligns with the gene accession number as a point of reference only. However, individual transcript sequences of the same gene can differ through naturally occurring variations (e.g. polymorphisms), each with its own valid existence. This clone is substantially in agreement with the reference, but a complete review of all prevailing variants is recommended prior to use. [More info](#)

OTI Annotation: This clone was engineered to express the complete ORF with an expression tag. Expression varies depending on the nature of the gene.

Components: The ORF clone is ion-exchange column purified and shipped in a 2D barcoded Matrix tube containing 10ug of transfection-ready, dried plasmid DNA (reconstitute with 100 ul of water).

- Reconstitution Method:
1. Centrifuge at 5,000xg for 5min.
 2. Carefully open the tube and add 100ul of sterile water to dissolve the DNA.
 3. Close the tube and incubate for 10 minutes at room temperature.
 4. Briefly vortex the tube and then do a quick spin (less than 5000xg) to concentrate the liquid at the bottom.
 5. Store the suspended plasmid at -20°C. The DNA is stable for at least one year from date of shipping when stored at -20°C.

RefSeq: [NM_020354.5](#)

RefSeq Size: 8564 bp

RefSeq ORF: 1815 bp

Locus ID: 57089

UniProt ID: [Q9NQZ7](#)

Cytogenetics: 10q24.2

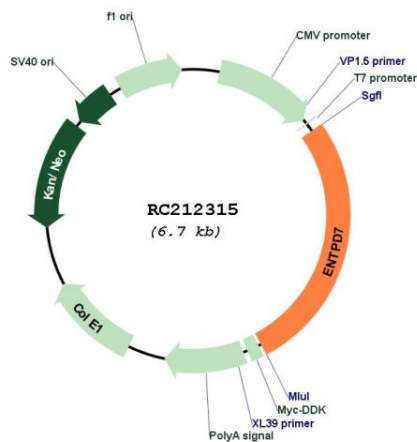
Domains: GDA1_CD39

Protein Families: Transmembrane

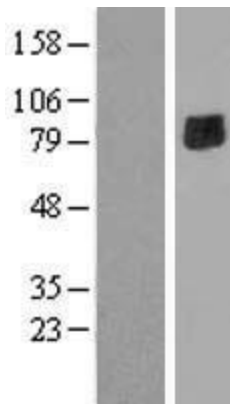
MW: 69 kDa

Gene Summary: This gene encodes a purine-converting ectoenzyme which belongs to the ecto-nucleoside triphosphate diphosphohydrolase (E-NTPDase) family. The encoded protein hydrolyzes extracellular nucleoside triphosphates (UTP, GTP, and CTP) to nucleoside monophosphates as part of a purinergic signaling pathway. It contains two transmembrane domains at the N- and C-termini and a large, hydrophobic catalytic domain located in between. This gene affects oxidative stress as well as DNA damage and is a mediator of senescence. [provided by RefSeq, Mar 2017]

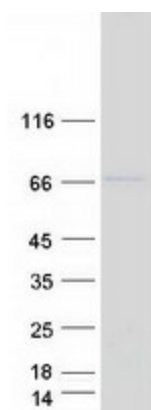
Product images:



Circular map for RC212315



Western blot validation of overexpression lysate (Cat# [LY412525]) using anti-DDK antibody (Cat# [TA50011-100]). Left: Cell lysates from untransfected HEK293T cells; Right: Cell lysates from HEK293T cells transfected with RC212315 using transfection reagent MegaTran 2.0 (Cat# [TT210002]).



Coomassie blue staining of purified ENTPD7 protein (Cat# [TP312315]). The protein was produced from HEK293T cells transfected with ENTPD7 cDNA clone (Cat# RC212315) using MegaTran 2.0 (Cat# [TT210002]).