

Product datasheet for RC212313

SULT1A1 (NM_177536) Human Tagged ORF Clone

Product data:

Product Type:	Expression Plasmids
Product Name:	SULT1A1 (NM_177536) Human Tagged ORF Clone
Tag:	Myc-DDK
Symbol:	SULT1A1
Synonyms:	HAST1/HAST2; P-PST; P-PST 1; PST; ST1A1; ST1A3; STP; STP1; ts-PST; TSPST1
Mammalian Cell Selection:	Neomycin
Vector:	pCMV6-Entry (PS100001)
E. coli Selection:	Kanamycin (25 ug/mL)
ORF Nucleotide Sequence:	>RC212313 representing NM_177536 Red=Cloning site Blue=ORF Green=Tags(s)

TTTTGTAATACGACTCACTATAGGGCGGCCGGAATTCGTCGACTGGATCCGGTACCGAGGAGATCTGCC
GCC**CGATCGCC**

ATGCTGGCCAAGTTGCTGTGCGACCAGGTGGTCGGTGCGCCCATCGCGTCTCGGCCTTCTACGCCGTA
TGAGCATTCTCCAGGAAAGGATGACATATTTTGGACCTGAAACAGAAATCTGGAACACCTATATGGT
GGTCTATGTTGCCCGCAACGCAAAGGATGTGGCAGTTTCTACTACCACTTCTACCACATGGCCAAGGTG
CACCTGAGCCTGGACCTGGACAGCTTCTGGAGAAGTTCATGGTCGGAGAAGTGTCTACGGATCCT
GGTACCAGCACGTGCAGGAGTGGTGGGAGCTGAGCCGCACCCACCCTGTTCTCTACTCTTCTATGAAGA
CATGAAGGAGAACCCGAAAAGGGAGATTCAAAAGATCCTGGAGTTTGTGGGGCGCTCCCTGCCAGAGGAG
ACCGTGGACTTTCGTGGTTCAAGCAGCATCGTTCAAGGAGATGAAGAAGAACCCTATGACCAACTACCA
CCGTCCCCCAGGAGTTCATGGACCACAGCATCTCCCCCTCATGAGGAAAGGCATGGCTGGGACTGGAA
GACCACCTTACCGTGGCGCAGAATGAGCGCTTCGATGCGGACTATGCGGAGAAGATGGCAGGCTGCAGC
CTCAGCTTCCGCTCTGAGCTG

ACGCGTACGCGGGCGCTCGAGCAGAACTCATCTCAGAAGAGGATCTGGCAGCAAATGATATCTGGATT
ACAAGGATGACGACGATAAGGTTTAA



[View online »](#)

Protein Sequence: >RC212313 representing NM_177536
Red=Cloning site Green=Tags(s)

MLAKLLCDQVVGAPIAVSAFYAGMSILQGKDDIFLDLKQKFWNTYMVVVYVARNAKDVAVSYYHFYHMAKV
 HPEPGTWDSFLEKFMVGEVSYGSWYQHVQEWELSRTHPVLVLFYEDMKNPKREIQKILEFVGRSLPEE
 TVDFVVQHTSFKEMKKNPMTNYTTVPQEFMDHSISPFMRKGMAGDWKTTFTVAQNERFDADYAEKMAGCS
 LSFRESEL

TRTRPLEQKLISEEDLAANDILDYKDDDDKV

Chromatograms: https://cdn.origene.com/chromatograms/ja1439_h11.zip

Restriction Sites: SgfI-MluI

Cloning Scheme:



ACCN: NM_177536

ORF Size: 651 bp

OTI Disclaimer: The molecular sequence of this clone aligns with the gene accession number as a point of reference only. However, individual transcript sequences of the same gene can differ through naturally occurring variations (e.g. polymorphisms), each with its own valid existence. This clone is substantially in agreement with the reference, but a complete review of all prevailing variants is recommended prior to use. [More info](#)

OTI Annotation: This clone was engineered to express the complete ORF with an expression tag. Expression varies depending on the nature of the gene.

Components: The ORF clone is ion-exchange column purified and shipped in a 2D barcoded Matrix tube containing 10ug of transfection-ready, dried plasmid DNA (reconstitute with 100 ul of water).

Reconstitution Method:

1. Centrifuge at 5,000xg for 5min.
2. Carefully open the tube and add 100ul of sterile water to dissolve the DNA.
3. Close the tube and incubate for 10 minutes at room temperature.
4. Briefly vortex the tube and then do a quick spin (less than 5000xg) to concentrate the liquid at the bottom.
5. Store the suspended plasmid at -20°C. The DNA is stable for at least one year from date of shipping when stored at -20°C.

RefSeq: [NM_177536.3](#), [NP_803880.1](#)

RefSeq Size: 1237 bp

RefSeq ORF: 585 bp

Locus ID: 6817

UniProt ID: [P50225](#)

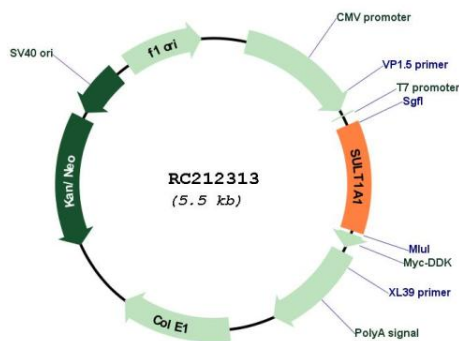
Cytogenetics: 16p11.2

Protein Pathways: Sulfur metabolism

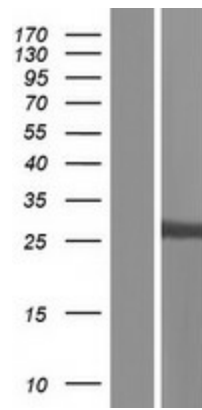
MW: 25.2 kDa

Gene Summary: Sulfotransferase enzymes catalyze the sulfate conjugation of many hormones, neurotransmitters, drugs, and xenobiotic compounds. These cytosolic enzymes are different in their tissue distributions and substrate specificities. The gene structure (number and length of exons) is similar among family members. This gene encodes one of two phenol sulfotransferases with thermostable enzyme activity. Multiple alternatively spliced variants that encode two isoforms have been identified for this gene. [provided by RefSeq, Jul 2008]

Product images:



Circular map for RC212313



Western blot validation of overexpression lysate (Cat# [LY406105]) using anti-DDK antibody (Cat# [TA50011-100]). Left: Cell lysates from untransfected HEK293T cells; Right: Cell lysates from HEK293T cells transfected with RC212313 using transfection reagent MegaTran 2.0 (Cat# [TT210002]).