

Product datasheet for RC212310

LILRA5 (NM_021250) Human Tagged ORF Clone

Product data:

Product Type:	Expression Plasmids
Product Name:	LILRA5 (NM_021250) Human Tagged ORF Clone
Tag:	Myc-DDK
Symbol:	LILRA5
Synonyms:	CD85; CD85F; ILT-11; ILT11; LILRB7; LIR-9; LIR9
Mammalian Cell Selection:	Neomycin
Vector:	pCMV6-Entry (PS100001)
E. coli Selection:	Kanamycin (25 ug/mL)
ORF Nucleotide Sequence:	>RC212310 representing NM_021250 Red=Cloning site Blue=ORF Green=Tags(s)

TTTTGTAATACGACTCACTATAGGGCGGCCGGAATTCGTCGACTGGATCCGGTACCGAGGAGATCTGCC
GCC**CGCATCGCC**

ATGGCACCATGGTCTCATCCATCTGCACAGCTGCAGCCAGTGGGAGGAGACGCCGTGAGCCCTGCCCTCA
TGGTTCTGCTCTGCCTCGGGCTGAGTCTGGGCCCCAGGACCCACGTGCAGGCAGGGAACCTCTCAAAGC
CACCTCTGGGCTGAGCCAGGCTCTGTGATCAGCCGGGGAACTCTGTGACCATCCGGTGCAGGGGACC
CTGGAGGCCCAGGAATACCGTCTGGTTAAAGAGGGAAGCCAGAACCCTGGGACACAGAACCCACTGG
AGCCCAAGAACAAGGCCAGATTCTCCATCCATCCATGACAGAGCACCATGCAGGGAGATACCGCTGTTA
CTACTACAGCCCTGCAGGCTGGTCAGAGCCAGCGACCCCTGGAGCTGGTGGTGACAGGATTCTACAAC
AAACCCACCTCTCAGCCCTGCCAGTCTGTGGTGACCTCAGGAGAGAACGTGACCCCTCCAGTGTGGCT
CACGGCTGAGATTCGACAGGTTCACTTCTGACTGAGGAAGGAGACCACAAGCTCTCCTGGACCTTGGACTC
ACAGCTGACCCCAAGTGGGCAAGTCCAGGCCCTGTTCCCTGTGGGCCCTGTGACCCCAAGCACAGGTGG
ATGCTCAGATGCTATGGCTCTCGCAGGCATATCCTGCAGGTATGGTCAGAACCCAGTGCCTCCTGGAGA
TCCGGTCTCAGGAGCAGCTGATAACCTCAGTCCGTCACAAAACAAGTCTGACTCTGGGACTGCCTCACA
CCTTCAGGATTACGCAGTAGAGAATCTCATCCGCATGGGCATGGCCGGCTTGATCCTGGTGGTCTTGGG
ATTCTGATATTCAGGATTGGCACAGCCAGAGAAGCCCCAAGCTGCAGCTGGAAGG

ACGCGTACGCGGCCGCTCGAGCAGAAACTCATCTCAGAAGAGGATCTGGCAGCAAATGATATCCTGGATT
ACAAGGATGACGACGATAAGGTTTAA



[View online »](#)

Protein Sequence: >RC212310 representing NM_021250
Red=Cloning site Green=Tags(s)

MAPWSPSAQLQPVGGDAVSPALMVLLCLGLSLGPRTHVQAGNLSKATLWAEPGSVISRGN SVTIRCQGT
 LEAQEYRLVKEGSPWPDTQNPLEPKNKARFSIPSMTEHHAGRYRCYYSPAGWSEPSDPLELVVTGFYN
 KPTLSALPSPVVTSGENVTLQCGSRLRFDRF IL TEEGDHKL SWTLDSQLTPSGQFQALFPVGPVTPSHRW
 MLRCYGSRRHILQVWSEPSDLLEIPVSGAADNLSFSQNKSDSGTASHLQDYAVENLIRMG MAGLILVVLG
 ILIFQDWHSQRSPQAAAGR

TRTRPLEQKLISEEDLAANDILDYKDDDDKV

Chromatograms: https://cdn.origene.com/chromatograms/mk8026_c10.zip

Restriction Sites: SgfI-MluI

Cloning Scheme:



ACCN: NM_021250

ORF Size: 897 bp

OTI Disclaimer: The molecular sequence of this clone aligns with the gene accession number as a point of reference only. However, individual transcript sequences of the same gene can differ through naturally occurring variations (e.g. polymorphisms), each with its own valid existence. This clone is substantially in agreement with the reference, but a complete review of all prevailing variants is recommended prior to use. [More info](#)

OTI Annotation: This clone was engineered to express the complete ORF with an expression tag. Expression varies depending on the nature of the gene.

Components: The ORF clone is ion-exchange column purified and shipped in a 2D barcoded Matrix tube containing 10ug of transfection-ready, dried plasmid DNA (reconstitute with 100 ul of water).

Reconstitution Method:

1. Centrifuge at 5,000xg for 5min.
2. Carefully open the tube and add 100ul of sterile water to dissolve the DNA.
3. Close the tube and incubate for 10 minutes at room temperature.
4. Briefly vortex the tube and then do a quick spin (less than 5000xg) to concentrate the liquid at the bottom.
5. Store the suspended plasmid at -20°C. The DNA is stable for at least one year from date of shipping when stored at -20°C.

RefSeq: [NM_021250.4](#)

RefSeq Size: 1365 bp

RefSeq ORF: 900 bp

Locus ID: 353514

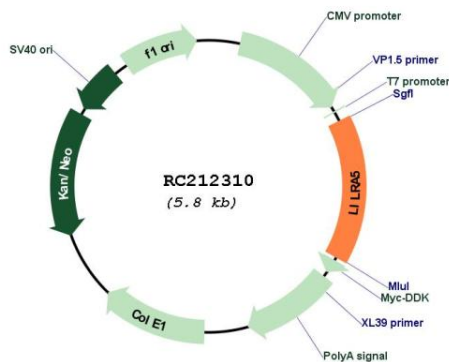
UniProt ID: [A6NI73](#)

Cytogenetics: 19q13.42

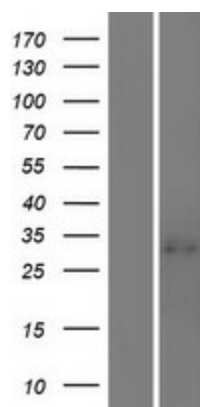
MW: 32.6 kDa

Gene Summary: The protein encoded by this gene is a member of the leukocyte immunoglobulin-like receptor (LIR) family. LIR family members are known to have activating and inhibitory functions in leukocytes. Crosslink of this receptor protein on the surface of monocytes has been shown to induce calcium flux and secretion of several proinflammatory cytokines, which suggests the roles of this protein in triggering innate immune responses. This gene is one of the leukocyte receptor genes that form a gene cluster on the chromosomal region 19q13.4. Four alternatively spliced transcript variants encoding distinct isoforms have been described. [provided by RefSeq, Jul 2008]

Product images:



Circular map for RC212310



Western blot validation of overexpression lysate (Cat# [LY411987]) using anti-DDK antibody (Cat# [TA50011-100]). Left: Cell lysates from untransfected HEK293T cells; Right: Cell lysates from HEK293T cells transfected with RC212310 using transfection reagent MegaTran 2.0 (Cat# [TT210002]).