

Product datasheet for **RC212308**

TZFP (ZBTB32) (NM_014383) Human Tagged ORF Clone

Product data:

Product Type:	Expression Plasmids
Product Name:	TZFP (ZBTB32) (NM_014383) Human Tagged ORF Clone
Tag:	Myc-DDK
Symbol:	TZFP
Synonyms:	FAXF; FAZF; Rog; TZFP; ZNF538
Mammalian Cell Selection:	Neomycin
Vector:	pCMV6-Entry (PS100001)
E. coli Selection:	Kanamycin (25 ug/mL)



[View online »](#)

ORF Nucleotide Sequence:

>RC212308 representing NM_014383
 Red=Cloning site Blue=ORF Green=Tags(s)

TTTTGTAATACGACTCACTATAGGGCGGCCGGAATTCGTCGACTGGATCCGGTACCGAGGAGATCTGCC
 GCC**GCGATCGCC**

ATGTCCTGCCCCCATAGACTGCCAGCCCTATGGCTCTGATCGGCTGGTACAGCTAGCAGCCAGGC
 TCCGGCCAGCACTCTGTACTCTGATCACCGTAGGGAGCCAGGAGTCCCGCCACAGCCTGGTGCT
 AGCAGGTGTCAGCCAGCAGCTGGGCCGAGGGCCAGTGGGCTCTGGGAGAAGGCATCAGCCCTTACC
 TTTGCCAGCTCTGAACTTTGTGTATGGGAGAGTGTAGAGCTGCAGCCTGGAGAGCTAAGGCCCTTC
 AGGAGGCGCCAGGGCCTGGGAGTGCAGTCCCTGGAAGAGGCATGCTGGAGGGCTCGAGGGGACAGGGC
 TAAAAAGCCAGATCCAGGCCTGAAGAAACATCAGGAGGAGCCAGAGAAACCCTCAAGGAATCCTGAGAGA
 GAACTGGGGGACCCTGGAGAGAAGCAGAAACCAGAACAGGTTTCTAGAACTGGTGGGAGAGAACAGGAGA
 TGTTGCACAAGCACTCGCCACCAAGAGGCAGCCGAGATGGCAGGAGCAACGCAGGAGGCTCAGCAGGA
 ACAGACCAGGTCAAAGGAGAAACGCCTCAAGCCCTGTTGGCCAAAGGGGAGCAGATGGGAAGCATGGA
 GTGCTCACGTGGTTGAGGAAAAATCCAGGGGGCTCTGAGGAAAGTCTGCGCAAGCTCCCTGGCCCCCTTC
 CCCCAGCAGGCTCCCTGCAAACAGCGTCAACCCTAGGCCCTCGTGGGCTGAGGCCCTTGGTTGGTGGG
 GGGCCAGCCTGCCTGTGGAGCATCCTGCTGATGCCGCCAGATATGGCATTCCCTTCTACCATAGCACC
 CCCACCACTGGAGCCTGGCAGGAGTCTGGCGGGAACAGAGGATCCCACTGTCCCTAAATGCCCCCAAAG
 GGCTCTGGAGCCAGAACCAGTTGGCCTCCTCCAGCCCTACCCAGGTTCCCTCCCCAGGGCCCCGCACA
 GCTCAGCCCTGGGAGATGGAAGAGTCTGATCAGGGGCACACAGGCGCACTTGAACCTGTGCGGGTCTATG
 GAGGACAAGGCAGGCTGCCACCTCGCCCGCACCTCCCCGGCCCTCCTGCTCGGTCTCGGCCATATG
 CGTGCTGTCTGTGAAAGAGTTTCTCACTCAAGCATCAGATGGAGAGCAGCACTACCGGATCCACACAGG
 AGAGAAGCCCTTCTCCTGTAGCCTTTGTCTCAGCGCTCCCGGGACTTCTCGGCCATGACCAAGCACCTG
 CGGACACACGGGGCCGCTCCGTACCGCTGCTCCCTGTGCGGGCCGGCTGTCCCAGCCTGCCTCCATGC
 AGGCGCACATGCGCGTCACTCGCCAGCAACTCCCGCCGGATGGACCATCCGCTCCACCTTCTCTA
 CTCCTCTCGAGGCCGTCTCGGCCCTCGACCTCTCCCTGTTGTCTTCTTCTCCACCACC

ACGCGTACGCGGCCGCTCGAGCAGAAACTCATCTCAGAAGAGGATCTGGCAGCAATGATATCCTGGATT
 ACAAGGATGACGACGATAAGGTTTAA

Protein Sequence:

>RC212308 representing NM_014383
 Red=Cloning site Green=Tags(s)

MSLPPIRLPSPYGSRLVQLAARLRPALCDLITVGSQEFPAHSLVLAGVSQQLGRRGQWALGEGISPST
 FAQLLNIFYGESVELQPGELRPLQEAARALGVQSLEEACWRARGDRAKKPDPLKKHQEEPEKPSRNPER
 ELGDPGEKQKPEQVSRTGGREQEMLHKHSPPRGRPEMAGATQEAQQEQTRSKEKRLQAPVGRGADGKHG
 VLTWLRNPPGGSESLRKLPGPLPPAGSLQTSVTPRPSWAEAPWL VGGQPALWSILLMPPRYGIPFYHST
 PTTGAWQEVWREQRIPLSLNAPKGLWSQNLASSPTPGSLPQGPAPLSPGEMEE SDQGHTGALATCAGH
 EDKAGCPPRPHPPAPPARSRYACSVCKRFLSKHQMETHYRVHTGKPFSCSLCPQRSRDFSAMTKHL
 RTHGAAPYRCSL CGAGCPSLASMQAHRGHSPSQLPPGWTIRSTFLYSSSRPSRPSTSPCCPSSSTT

TRTRPLEQKLI SEEDLAANDILDYKDDDDKV

Chromatograms:

https://cdn.origene.com/chromatograms/mk8120_g05.zip

Restriction Sites:

Sgfl-MluI

Cloning Scheme:

ACCN: NM_014383

ORF Size: 1461 bp

OTI Disclaimer: Due to the inherent nature of this plasmid, standard methods to replicate additional amounts of DNA in E. coli are highly likely to result in mutations and/or rearrangements. Therefore, OriGene does not guarantee the capability to replicate this plasmid DNA. Additional amounts of DNA can be purchased from OriGene with batch-specific, full-sequence verification at a reduced cost. Please contact our customer care team at custsupport@origene.com or by calling 301.340.3188 option 3 for pricing and delivery.

The molecular sequence of this clone aligns with the gene accession number as a point of reference only. However, individual transcript sequences of the same gene can differ through naturally occurring variations (e.g. polymorphisms), each with its own valid existence. This clone is substantially in agreement with the reference, but a complete review of all prevailing variants is recommended prior to use. [More info](#)

OTI Annotation: This clone was engineered to express the complete ORF with an expression tag. Expression varies depending on the nature of the gene.

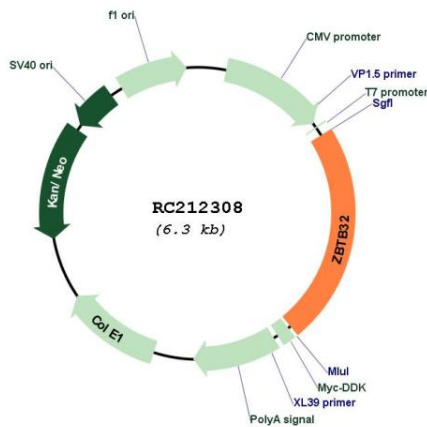
Components: The ORF clone is ion-exchange column purified and shipped in a 2D barcoded Matrix tube containing 10ug of transfection-ready, dried plasmid DNA (reconstitute with 100 ul of water).

- Reconstitution Method:**
1. Centrifuge at 5,000xg for 5min.
 2. Carefully open the tube and add 100ul of sterile water to dissolve the DNA.
 3. Close the tube and incubate for 10 minutes at room temperature.
 4. Briefly vortex the tube and then do a quick spin (less than 5000xg) to concentrate the liquid at the bottom.
 5. Store the suspended plasmid at -20°C. The DNA is stable for at least one year from date of shipping when stored at -20°C.

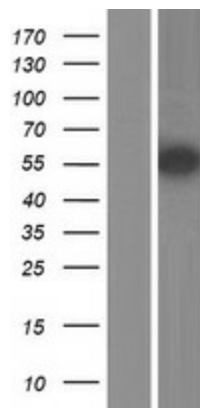
RefSeq: [NM_014383.3](#)
RefSeq Size: 1960 bp
RefSeq ORF: 1464 bp
Locus ID: 27033
UniProt ID: [Q9Y2Y4](#)
Cytogenetics: 19q13.12
Protein Families: Transcription Factors
MW: 53.4 kDa

Gene Summary: DNA-binding protein that binds to the to a 5'-TGACAGTGT-3' core sequence. May function as a transcriptional transactivator and transcriptional repressor. Probably exerts its repressor effect by preventing GATA3 from binding to DNA. May play a role in regulating the differentiation and activation of helper T-cells (By similarity).[UniProtKB/Swiss-Prot Function]

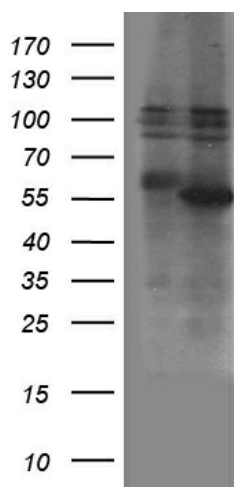
Product images:



Circular map for RC212308



Western blot validation of overexpression lysate (Cat# [LY415327]) using anti-DDK antibody (Cat# [TA50011-100]). Left: Cell lysates from untransfected HEK293T cells; Right: Cell lysates from HEK293T cells transfected with RC212308 using transfection reagent MegaTran 2.0 (Cat# [TT210002]).



HEK293T cells were transfected with the pCMV6-ENTRY control (Cat# [PS100001], Left lane) or pCMV6-ENTRY ZBTB32 (Cat# RC212308, Right lane) cDNA for 48 hrs and lysed. Equivalent amounts of cell lysates (5 ug per lane) were separated by SDS-PAGE and immunoblotted with anti-ZBTB32 antibody (Cat# [TA812203]). Positive lysates [LY415327] (100ug) and [LC415327] (20ug) can be purchased separately from OriGene.