

Product datasheet for RC212303

TMEM176B (NM_001101312) Human Tagged ORF Clone

Product data:

Product Type:	Expression Plasmids
Product Name:	TMEM176B (NM_001101312) Human Tagged ORF Clone
Tag:	Myc-DDK
Symbol:	TMEM176B
Synonyms:	LR8; MS4B2
Mammalian Cell Selection:	Neomycin
Vector:	pCMV6-Entry (PS100001)
E. coli Selection:	Kanamycin (25 ug/mL)
ORF Nucleotide Sequence:	>RC212303 representing NM_001101312 Red=Cloning site Blue=ORF Green=Tags(s)

TTTTGTAATACGACTCACTATAGGGCGGCCGGAATTCGTCGACTGGATCCGGTACCGAGGAGATCTGCC
GCC**CGATCGCC**

ATGACGCAAAACACGGTGATTGTGAATGGAGTTGCTATGGCCTCTAGGCCATCCCAGCCCACCCACGTCA
ACGTCCACATCCACCAGGAGTCAGCTTTGACACAACCTGCTGAAAGCTGGAGTTCTCTGAAGAAGTTTCT
TTTTACCCTGGGGACACTGTGCCTCCACAGCCAGGATTGGTTATGAGCAGCTGGCTCTAGGGTGACT
CAGATATTGCTGGGGTGTGAGTTGTGTTCTTGGAGTGTGTCTCAGCTGGGGCCCTGGACTGTGCTGA
GTGCCTCAGGCTGTGCCTTCTGGGCGGGTCTGTGGTGATCGCAGCAGGAGCTGGGGCCATTGTCCATGA
GAAGCACCCGGGCAAACCTTGCTGGCTATATATCCAGCCTGCTCACCTGGCAGGCTTTGTACAGCTATG
GCTGCTGTGTCTCTGCGTGAATAGCTTCATCTGGCAAACCTGAACCCTTTTTATACATCGACACTGTGT
GTGATCGCTCAGACCCTGTCTTCCCTACCACTGGGTACAGATGGATGCGGCGAAGTCAAGAGAACCAATG
GCAGAAGGAGGAGTGTAGAGCTTACATGCAGATGCTGAGGAAGTTGTTACAGCAATCCGTGCCCTGTTC
CTGGCTGTCTGTGCTTGAAGGTCATTGTGCTTGGTTTCTTGGGAGTAGGCTTCGAAAACCTGTGTG
GCCAGAGCTCCCAGCCCCTGAATGAGGAAGGATCAGAGAAGAGGCTACTGGGGGAGAATTCAGTGCCCC
TTCGCCCTCTAGGGAGCAGACCTCCACTGCCATTGTCTG

ACGCGTACGCGGCCGCTCGAGCAGAAACTCATCTCAGAAGAGGATCTGGCAGCAAATGATATCCTGGATT
ACAAGGATGACGACGATAAGGTTTAA



[View online »](#)

Protein Sequence: >RC212303 representing NM_001101312
Red=Cloning site Green=Tags(s)

MTQNTVI VNGVAMASRPSQPTHVNVHIIHQESAL TQLLKAGGSLKKFLFHPGDTV PSTARIGYEQLALGVT
 QILLGVVSCVLGVCLSLGPWTVLSASGCAFWAGSVVIAAGAGAI VHEKHPGKLAGYISSLLTLAGFATAM
 AAVVLCVNSFIWQTEPFLYIDTVCDRSDPVFPTTGYRWMRRSQENQWQKEECRAYMQMLRKLFTAIRALF
 LAVCVLKVIVSLVSLGVGLRNL CGSSQPLNEEGSEKRLLEGENSVPPSPSREQTSTAIVL

TRTRPLEQKLISEEDLAANDILDYKDDDDKV

Chromatograms: https://cdn.origene.com/chromatograms/mk6395_c11.zip

Restriction Sites: SgfI-MluI

Cloning Scheme:

Cloning sites used for ORF Shuttling:



* The last codon before the Stop codon of the ORF

ACCN: NM_001101312

ORF Size: 810 bp

OTI Disclaimer: The molecular sequence of this clone aligns with the gene accession number as a point of reference only. However, individual transcript sequences of the same gene can differ through naturally occurring variations (e.g. polymorphisms), each with its own valid existence. This clone is substantially in agreement with the reference, but a complete review of all prevailing variants is recommended prior to use. [More info](#)

OTI Annotation: This clone was engineered to express the complete ORF with an expression tag. Expression varies depending on the nature of the gene.

Components: The ORF clone is ion-exchange column purified and shipped in a 2D barcoded Matrix tube containing 10ug of transfection-ready, dried plasmid DNA (reconstitute with 100 ul of water).

Reconstitution Method:

1. Centrifuge at 5,000xg for 5min.
2. Carefully open the tube and add 100ul of sterile water to dissolve the DNA.
3. Close the tube and incubate for 10 minutes at room temperature.
4. Briefly vortex the tube and then do a quick spin (less than 5000xg) to concentrate the liquid at the bottom.
5. Store the suspended plasmid at -20°C. The DNA is stable for at least one year from date of shipping when stored at -20°C.

Note: Plasmids are not sterile. For experiments where strict sterility is required, filtration with 0.22um filter is required.

RefSeq: [NM_001101312.2](#)

RefSeq Size: 1312 bp

RefSeq ORF: 813 bp

Locus ID: 28959

UniProt ID: [Q3YBM2](#)

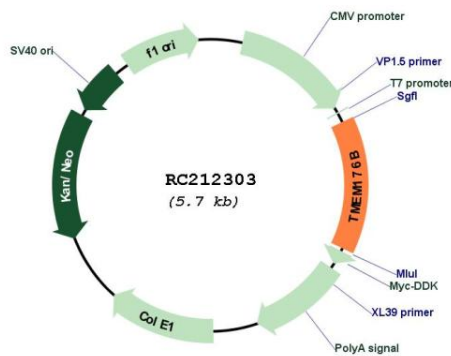
Cytogenetics: 7q36.1

Protein Families: Druggable Genome, Transmembrane

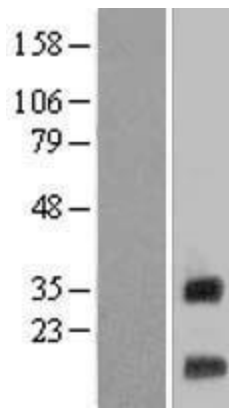
MW: 28.9 kDa

Gene Summary: May play a role in the process of maturation of dendritic cells. Required for the development of cerebellar granule cells (By similarity).[UniProtKB/Swiss-Prot Function]

Product images:



Circular map for RC212303



Western blot validation of overexpression lysate (Cat# [LY412080]) using anti-DDK antibody (Cat# [TA50011-100]). Left: Cell lysates from untransfected HEK293T cells; Right: Cell lysates from HEK293T cells transfected with [RC222489] using transfection reagent MegaTran 2.0 (Cat# [TT210002]).