

Product datasheet for RC212302

STAC2 (NM_198993) Human Tagged ORF Clone

Product data:

Product Type:	Expression Plasmids
Product Name:	STAC2 (NM_198993) Human Tagged ORF Clone
Tag:	Myc-DDK
Symbol:	STAC2
Synonyms:	24b2; 24b2/STAC2
Vector:	pCMV6-Entry (PS100001)
E. coli Selection:	Kanamycin (25 ug/mL)
Cell Selection:	Neomycin
ORF Nucleotide Sequence:	>RC212302 representing NM_198993 Red=Cloning site Blue=ORF Green=Tags(s)

TTTTGTAATACGACTCACTATAGGGCGCCGGAATTCGTCGACTGGATCCGGTACCGAGGAGATCTGCC
GCCGCGATCGCC

ATGACCGAGATGAGCGAGAAGGAGAACGAACCGGATGACGCGGCCACCCACAGCCCCCAGGGACCGTCT
CCGCCCTCCAGGAAACCAAGCTCCAGCGATTCAAGCGCTCCCTCTCCCTCAAGACCATCCTCCGAAGTAA
GAGCTTGGAGAATTCTTCTTTCGCTCGGGCTCTGAGCTCAAGTGCCCCACCGAGGTGCTGCTGACGCC
CCAACCCCACTGCCCCCTCCCTCCCAACCCACAGCCTCGGACAGGGGCTGGCTACCCCATCCCCCT
CCCCATGCCCACTGCCACGCCCCCTGGCAGCGCTCAAACCAAGTGGGCTGCACAGCTTCCAGGAACATGT
CTTCAAGCGAGCTAGCCCTTGTGAGCTGTGCCACCAGCTCATCGTAGGAACTCCAAACAGGGCTTGCGA
TGTAAGATGTGCAAAGTCAGCGTCCACCTCTGGTGTCTGAGGAGATCTCCCAACCAAGTGGCAGGCA
AGACGTCCACCTCCTCCGCGCAACTTCAGTTCCTTCTCTGGTGCATGAGCCGCCACCAAGTCTGTGC
CACAAGCAAAGAGTCCCCACCACTGGGGACAGTGGGAAGGTGGACCCTGTCTACGAGACCTGCGCTAT
GGCACCTCCCTGGCACTGATGAACCGCTCCAGTTTCAGCAGCACCTCTGAGTCCCCGACAAGGACCTGA
GTGAGCGGGATGAGCTGACCGAGGATGGGAAGGCAGCATCCGACGCTCTGAGGAGGGGCTGGTGACAG
TGCATCTCCAGTATTCACAGCCCCAGCAGAGAGTGAAGGGCCAGGACCAGAGGAGAAGAGTCTGGACAG
CAGCTCCCCAAAGCCACCTGCGGAAGGATGTGGGCCCATGTACTCCTACGTTGCACTCTACAAGTTTC
TGCCCCAGGAGACAATGATCTGGCTCTGCAGCCTGGAGATCGGATCATGCTGGTGGATGACTCTAACGA
GGACTGGTGAAGGGCAAGATCGGCGACCGGGTTGGCTTCTTCCAGCTAATTTTGTGCAACGGGTGAGG
CCAGGGCAGAGATGTTTGGCGCTGCTGCCAACCTTCTCCGGAACAAGGAACAGGGTTACATGAGCCTCA
AGGAGAACCAGATCTGCGTGGGCGTGGGCAGAAGCAAGGATGCTGACGGCTTCATCCGCGTCAGCAGTGG
CAAGAAGCGGGGCTGGTCCAGTCGACGCCCTGACTGAGATC

ACGCGTACGCGGCCGCTCGAGCAGAAACTCATCTCAGAAGAGGATCTGGCAGCAAATGATATCCTGGATT
ACAAGGATGACGACGATAAGGTTTAA



[View online »](#)

Protein Sequence: >RC212302 representing NM_198993
 Red=Cloning site Green=Tags(s)

MTEMSEKENEPDDAATHSPPGTVSALQETKLQRFKRSLSLKTIILRSKSLENFFLRSGSELKCPTEVLLTP
 PTPLPPSPPTASDRGLATPSPSPCPVPRPLAALKPVRLHSFQEHVFKRASPCELCHQLIVGNSKQGLR
 CKMCKVSVHLWCSEEISHQQCPGKTSTSFRRNFSSPLL VHEPPVCATSKESPPTGDSGKVPVYETLRY
 GTSLALMNRSSFSTSESPTRSLSERDELTEDEGSIRSSEEKPGDSASPVFTAPAESEGPPEEKSPGQ
 QLPKATLRKDVGPMYSYVALYKFLPQENNDLALQPGDRIMLVDDSNEDWWKGI GDRVGF PANFVQVRV
 PGENVWRCCQPFSGNKEQGYSMLKENQICVGVGRSKDADGFI RVSSGKKRGLVPVDALTEI

TRTRPLEQKLISEEDLAANDILDYKDDDDKV

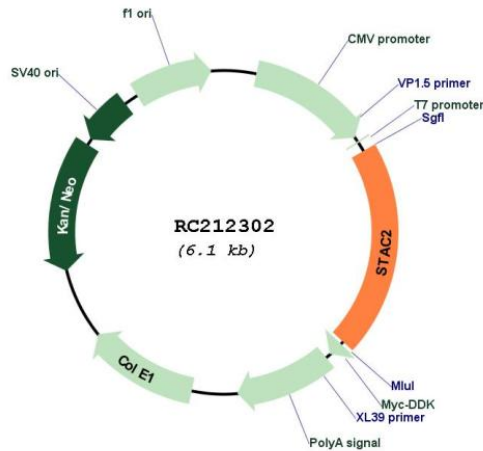
Chromatograms: https://cdn.origene.com/chromatograms/mk6825_b06.zip

Restriction Sites: SgfI-MluI

Cloning Scheme:



Plasmid Map:



ACCN: NM_198993

ORF Size: 1233 bp

OTI Disclaimer: The molecular sequence of this clone aligns with the gene accession number as a point of reference only. However, individual transcript sequences of the same gene can differ through naturally occurring variations (e.g. polymorphisms), each with its own valid existence. This clone is substantially in agreement with the reference, but a complete review of all prevailing variants is recommended prior to use. [More info](#)

OTI Annotation: This clone was engineered to express the complete ORF with an expression tag. Expression varies depending on the nature of the gene.

RefSeq: [NM_198993.5](#)

RefSeq Size: 3227 bp

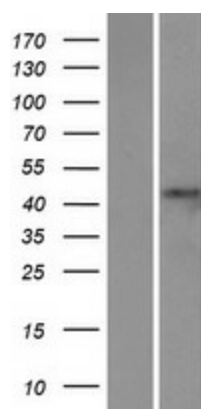
RefSeq ORF: 1236 bp

Locus ID: 342667

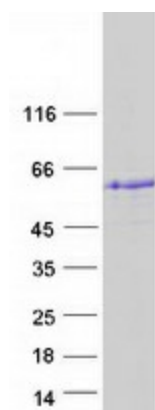
MW: 44.8 kDa

Gene Summary: This gene encodes a protein containing an SH3 domain and a zinc finger domain. The encoded protein has been shown to regulate calcium channel inactivation in a human cell line. Reduced expression of this gene has been observed in human heart failure. [provided by RefSeq, May 2017]

Product images:



Western blot validation of overexpression lysate (Cat# [LY404706]) using anti-DDK antibody (Cat# [TA50011-100]). Left: Cell lysates from untransfected HEK293T cells; Right: Cell lysates from HEK293T cells transfected with RC212302 using transfection reagent MegaTran 2.0 (Cat# [TT210002]).



Coomassie blue staining of purified STAC2 protein (Cat# [TP312302]). The protein was produced from HEK293T cells transfected with STAC2 cDNA clone (Cat# RC212302) using MegaTran 2.0 (Cat# [TT210002]).