

Product datasheet for **RC212301**

GNG8 (NM_033258) Human Tagged ORF Clone

Product data:

Product Type: Expression Plasmids
Product Name: GNG8 (NM_033258) Human Tagged ORF Clone
Tag: Myc-DDK
Symbol: GNG8
Mammalian Cell Selection: Neomycin
Vector: pCMV6-Entry (PS100001)
E. coli Selection: Kanamycin (25 ug/mL)
ORF Nucleotide Sequence: >RC212301 ORF sequence
Red=Cloning site Blue=ORF Green=Tags(s)

TTTTGTAATACGACTCACTATAGGGCGGCCGGAATTCGTCGACTGGATCCGGTACCGAGGAGATCTGCC
GCC**CGATCGCC**

ATGTCCAACAACATGGCCAAGATTGCCGAGGCCCGCAAGACGGTGAACAGCTGAAGCTGGAGGTGAACA
TCGACCGCATGAAGGTGTCGCAGGCAGCAGCGAACTCCTGGCTTTCTGCGAGACGCATGCCAAAGATGA
CCCGCTGGTGACGCCAGTACCCGCCGGGAGAACCCTTCCGCGACAAGCGCCTCTTTGTGTTCTGCTC
TG

ACGCGTACGCGGCCGCTCGAGCAGAACTCATCTCAGAAGAGGATCTGGCAGCAAATGATATCCTGGATT
ACAAGGATGACGACGATAAGGTTTAA

Protein Sequence: >RC212301 protein sequence
Red=Cloning site Green=Tags(s)

MSNNMAKIAEARKTVEQLKLEVNIDRMKVSQAAEELLAFCEHAKDDPLVTPVPAENPFRDKRLFCVLL

TRTRPLEQKLISEEDLAANDILDYKDDDDKV

Chromatograms: https://cdn.origene.com/chromatograms/mk6601_d01.zip

Restriction Sites: Sgfl-MluI



[View online »](#)

Cloning Scheme:


ACCN: NM_033258

ORF Size: 212 bp

OTI Disclaimer: The molecular sequence of this clone aligns with the gene accession number as a point of reference only. However, individual transcript sequences of the same gene can differ through naturally occurring variations (e.g. polymorphisms), each with its own valid existence. This clone is substantially in agreement with the reference, but a complete review of all prevailing variants is recommended prior to use. [More info](#)

OTI Annotation: This clone was engineered to express the complete ORF with an expression tag. Expression varies depending on the nature of the gene.

Components: The ORF clone is ion-exchange column purified and shipped in a 2D barcoded Matrix tube containing 10ug of transfection-ready, dried plasmid DNA (reconstitute with 100 ul of water).

Reconstitution Method:

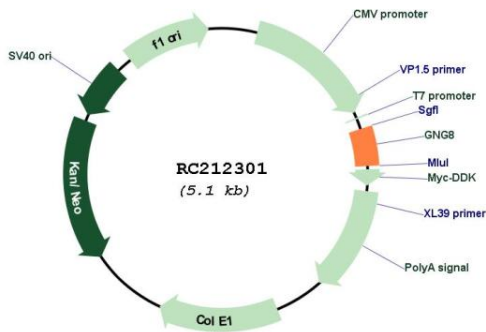
1. Centrifuge at 5,000xg for 5min.
2. Carefully open the tube and add 100ul of sterile water to dissolve the DNA.
3. Close the tube and incubate for 10 minutes at room temperature.
4. Briefly vortex the tube and then do a quick spin (less than 5000xg) to concentrate the liquid at the bottom.
5. Store the suspended plasmid at -20°C. The DNA is stable for at least one year from date of shipping when stored at -20°C.

Note: Plasmids are not sterile. For experiments where strict sterility is required, filtration with 0.22um filter is required.

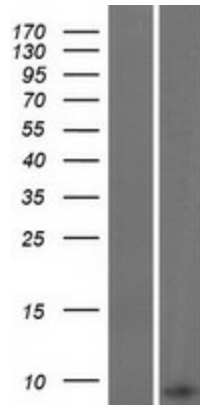
RefSeq: [NM_033258.1, NP_150283.1](#)
RefSeq Size: 213 bp
RefSeq ORF: 213 bp
Locus ID: 94235
UniProt ID: [Q9UK08](#)
Cytogenetics: 19q13.32
Protein Families: Druggable Genome
Protein Pathways: Chemokine signaling pathway
MW: 7.8 kDa

Gene Summary: Guanine nucleotide-binding proteins (G proteins) are involved as a modulator or transducer in various transmembrane signaling systems. The beta and gamma chains are required for the GTPase activity, for replacement of GDP by GTP, and for G protein-effector interaction. [UniProtKB/Swiss-Prot Function]

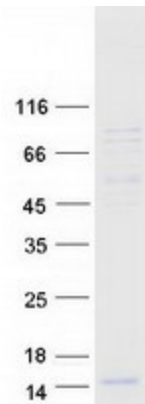
Product images:



Circular map for RC212301



Western blot validation of overexpression lysate (Cat# [LY409632]) using anti-DDK antibody (Cat# [TA50011-100]). Left: Cell lysates from untransfected HEK293T cells; Right: Cell lysates from HEK293T cells transfected with RC212301 using transfection reagent MegaTran 2.0 (Cat# [TT210002]).



Coomassie blue staining of purified GNG8 protein (Cat# [TP312301]). The protein was produced from HEK293T cells transfected with GNG8 cDNA clone (Cat# RC212301) using MegaTran 2.0 (Cat# [TT210002]).