

Product datasheet for **RC212298**

Znf206 (ZSCAN10) (NM_032805) Human Tagged ORF Clone

Product data:

Product Type:	Expression Plasmids
Product Name:	Znf206 (ZSCAN10) (NM_032805) Human Tagged ORF Clone
Tag:	Myc-DDK
Symbol:	Znf206
Synonyms:	ZFP206; ZNF206
Mammalian Cell Selection:	Neomycin
Vector:	pCMV6-Entry (PS100001)
E. coli Selection:	Kanamycin (25 ug/mL)



[View online »](#)

ORF Nucleotide
Sequence:

>RC212298 representing NM_032805
Red=Cloning site Blue=ORF Green=Tags(s)

TTTTGTAATACGACTCACTATAGGGCGGCCGGAATTCGTCGACTGGATCCGGTACCGAGGAGATCTGCC
GCC**CGGATCGCC**

ATGGGGCCACGGGCGTCCCTGAGCCGGCTCCGGGAGCTCTGCGGCCACTGGCTGCGGCCGGCTCTGCACA
CCAAGAAACAGATCCTGGAGCTGCTGGTCTGGAGCAGTTCTGAGTGTGCTGCCTCCGCACCTCCTGGG
CCGCTGCAGGGGCGAGCCGCTCAGGGATGGGGAGGAGGTGGTGTGCTGCTCGAGGGCATCCACCGGGAG
CCCAGCCACGCGGGGCCGCTGGATTTTAGTTGTAATGCTGGCAAGAGTTGTCCCGTGCAGACGTACCT
TGGAGGAAAAGGGGTGTCTTCCAGGTCCCAGCCACAGCCCCAAGAAGGAATTGCCTGCGGAAGAGCC
TTCAGTGTGGGCCATCGGATGAGCCTCCCCGACCCAGCCAAGGGCTGCCAGCCTGTGAGCCGGGA
CAGTGGAGGCTTCCCCAAGTTCAAAGCAGCCGCTGAGCCGGGGCCCCAGAAGACATCCAGGCCCTGC
AAGAAAGCAGTCCCAGGGCCCCCACCATGGCCAGAGGAGATTCCCGAGATCAGGAGCTGGCGGCTGT
GCTGGAGTGCCTGACCTTTGAGGATGTCCAGAGAATAAGGCGTGGCCTGCACACCCCTGGGATTCGGA
AGCAGAACCCAGACAAGGAGGAATTTAAACAAGAAGAGCCAAAGGGGCTGCCTGGCCACTCCCATCT
TAGCAGAGTCCCAGGCAGATAGTCTGGGGTGCGGGAGAGCCTTGCGCCAGTCCGTCGGACGGGGCGC
TGCGGCTAGCGGCCCTGGCGAAGATGGTCCCTTCTTGGCAGCAGTGAATTTTGGAGGTCAAAGTGGCT
GAGGGCGTCCCAGGCCAATCCGGAGTTGAGTTCATCTGCGCGGACTGCGGGGTGAGCTTCCCAGCAG
TGTCTCGCTGAAGGCGCACCAGCTGCGCTCGCACCCGGCTGGGCGCTCCTTCTGTGCCTTTGTGCGG
GAAGAGCTTGGCCGAGCTCCATTCTCAAGCTGCACATGCGCACTCACACGGACGAGCGGCCGACGCC
TGCCACCTGTGCGGCCACCGCTTCCGCCAGAGCTCGCACCTGAGCAAGCACCTGCTGACCCACTCCTCCG
AACCCGCTTCTGTGCGCAGAGTGCGGCCGGCTTCCAGCGCCGCGCCAGCCTTGTGCAGCACCTGCT
GGCGCACGCCCAGGACCAGAAGCCGCCCTGCGCTCCTGAGAGTAAGGCCGAAGCGCCCACTGACCGAT
GTCTGTGCTCCCACTGCGGCCAGAGCTTCCAGCGCCGCTCCAGCCTCAAGCGCCACTGCGGATCCACG
CCAGGGACAAGGACCGCCGGTCTCCGAAGGCTCCGGCAGCCGCCCGGGACTCCGACCGGAGGCCCTT
CGTGTGCAGGACTGCGGCAAGGCTTCCGGCGCAGGAGCACCTGGTGGCCACCGGAGGGTGCACACG
GGCAGCGGCCCTTCTCCTGCCAGGCTTGGCGCCGAGCTTACGCAGAGCTCGCAGCTGGTACGCCACC
AACGGGTGCACACGGGCGAGAAGCCCTACGCCTGTCCGAGTGCAGGGAAGCGCTTGTGCGCCGGGCCAG
CCTTGCCCGCCACTGCTGACCCACGGTGGCCCTCGGCCACCCTGCACCCAGTGCAGGGAAGAGTTTC
GGCCAGACCCAGGATCTGGCCCGCCACCAGCGCAGCCACAGGGCGAGAAGCCCTGCCGCTGCAGCGAGT
GCGGTGAGGGCTTCCAGCCAGAGCGCCACTGGCGCGCCACCAGCGCATCCACACAGGGGAGAAGCCCA
CGCTGCGACACCTGCGGCCACCGTTTCCGCAATAGCTCCAACCTGGCCCGCCATCGCCGAGCCACAG
GGCAGCGGCCCTACAGCTGTGACAGCTGCGGTGCGAGCTTCCGGCGCAACGCGCATCTGCGCGGCCACC
TGGCTACCCATGCGGAGCCCGGGCAGGAGCAGGCCGAGCCCCGAGGAGTGCCTGGAGTGGGGAAAGAG
CTTCAGCCGAGCTGCAATCTGCTGCGACACCTGCTGGTGCACACGGGCGCCAGGCCCTACTCCTGCACG
CAGTGTGGCCGAGCTTCCAGCCCAACTCCACCTGCTGCGCCACTGCGCACCCACGCCCGGAGACGC
TGATC

ACGCGTACGCGGCCGCTCGAGCAGAACTCATCTCAGAAGAGGATCTGGCAGCAAATGATATCCTGGATT
ACAAGGATGACGACGATAAGGTTTAA

Protein Sequence: >RC212298 representing NM_032805
 Red=Cloning site Green=Tags(s)

MGPRASLSRLRELCGHWLRPALHTKKQILELLVLEQFLSVLPPHLLGRLQGQPLRDGEEVLLLEGIHRE
 PSHAGPLDFSCNAGKSCPRADVTLEEKGCASQVPSHSPKKEPAPAEPSVLGSPDEPPRPQRAAQAEPG
 QWRLPPSSKQPLSPGPQKTFQALQESSPQGPSPWPEESSRDQELAAVLECLTFEDVPENKAWPAHPLGFG
 SRTPDKEEFKQEEPKAAWPTPI LAESQADSPGVGPECAQSLGRGAAASGPGEDGSLLSSEIILEVKVA
 EGVPEPNPELQFICADCGVSFPQLSRLKAHQLRSHAPGRSFLCLCGKSFGRSSILKLHMRTHTDERPHA
 CHLCGHRFRQSSHL SKHLLTHSSEPAFLCAECGRGFQRRASLVQHLLAHAQDQKPPCAPESKAEAPLTD
 VLC SHCGQSFQRRSSLKRHLRIHARDKDRSSEGSRRRSDRRPFVCSDCGKAFRRSEHLVAHRRVHT
 GERPFSCQACGRSFTQSSQLVSHQRVHTGEKPYACPQCGKRFVRRASLARHLLTHGGPRPHCTQCCKSF
 GQTQDLARHQRSHTEKPCRCSECGEGFSQSAHLARHQRHTGEKPHACDTCGHRFRNSSNLARHRSHT
 GERPYSCQTCGRSFRRNAHLRRHLATHAEPQEQAEPPQECVCEGKSF SRSCNLLRHLLVHTGARPYSCT
 QCGRSFSRNSHLLRHLRTHARETLY

TRTRPLEQKLI SEEDLAANDILDYKDDDDKV

Chromatograms: https://cdn.origene.com/chromatograms/mk8011_e04.zip

Restriction Sites: SgfI-MluI

Cloning Scheme:

Cloning sites used for ORF Shuttling:



* The last codon before the Stop codon of the ORF

ACCN: NM_032805

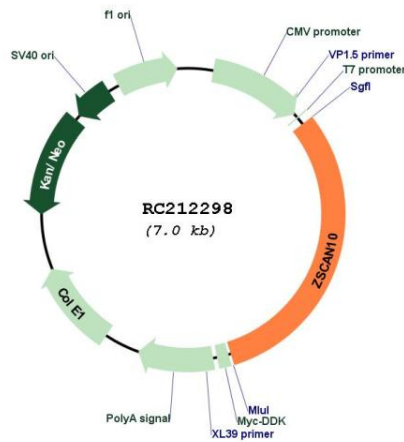
ORF Size: 2175 bp

OTI Disclaimer: The molecular sequence of this clone aligns with the gene accession number as a point of reference only. However, individual transcript sequences of the same gene can differ through naturally occurring variations (e.g. polymorphisms), each with its own valid existence. This clone is substantially in agreement with the reference, but a complete review of all prevailing variants is recommended prior to use. [More info](#)

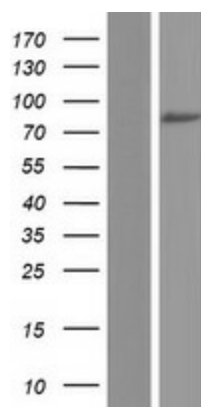
OTI Annotation: This clone was engineered to express the complete ORF with an expression tag. Expression varies depending on the nature of the gene.

Components:	The ORF clone is ion-exchange column purified and shipped in a 2D barcoded Matrix tube containing 10ug of transfection-ready, dried plasmid DNA (reconstitute with 100 ul of water).
Reconstitution Method:	<ol style="list-style-type: none"> 1. Centrifuge at 5,000xg for 5min. 2. Carefully open the tube and add 100ul of sterile water to dissolve the DNA. 3. Close the tube and incubate for 10 minutes at room temperature. 4. Briefly vortex the tube and then do a quick spin (less than 5000xg) to concentrate the liquid at the bottom. 5. Store the suspended plasmid at -20°C. The DNA is stable for at least one year from date of shipping when stored at -20°C.
RefSeq:	<u>NM_032805.1, NP_116194.1</u>
RefSeq Size:	2463 bp
RefSeq ORF:	2343 bp
Locus ID:	84891
UniProt ID:	<u>Q96SZ4</u>
Cytogenetics:	16p13.3
Protein Families:	ES Cell Differentiation/IPS, Transcription Factors
MW:	80.2 kDa
Gene Summary:	Embryonic stem (ES) cell-specific transcription factor required to maintain ES cell pluripotency. Can both activate and /or repress expression of target genes, depending on the context. Specifically binds the 5'-[GA]CGCNGGCG[CT]-3' DNA consensus sequence. Regulates expression of POU5F1/OCT4, ZSCAN4 and ALYREF/THOC4.[UniProtKB/Swiss-Prot Function]

Product images:



Circular map for RC212298



Western blot validation of overexpression lysate (Cat# [LY409932]) using anti-DDK antibody (Cat# [TA50011-100]). Left: Cell lysates from untransfected HEK293T cells; Right: Cell lysates from HEK293T cells transfected with RC212298 using transfection reagent MegaTran 2.0 (Cat# [TT210002]).