

Product datasheet for **RC212297**

EPN3 (NM_017957) Human Tagged ORF Clone

Product data:

Product Type:	Expression Plasmids
Product Name:	EPN3 (NM_017957) Human Tagged ORF Clone
Tag:	Myc-DDK
Symbol:	EPN3
Mammalian Cell Selection:	Neomycin
Vector:	pCMV6-Entry (PS100001)
E. coli Selection:	Kanamycin (25 ug/mL)



[View online »](#)

ORF Nucleotide
Sequence:

>RC212297 representing NM_017957
Red=Cloning site Blue=ORF Green=Tags(s)

TTTTGTAATACGACTCACTATAGGGCGGCCGGAATTCGTCGACTGGATCCGGTACCGAGGAGATCTGCC
GCCGCGATCGCC

ATGACGACCTCCGCACTCCGGCGCCAGGTGAAGAACATCGTGCACAACACTCCGAGGCAGAAATCAAGG
TGC GCGAGGCCACCAGCAATGACCCCTGGGGCCCCCTAGTTCGCTCATGTCCGAGATCGCTGACCTGAC
CTTCAACACAGTGGCCTTCAACGAAGTCAATGGGCATGCTGTGGCGGGCTCAATGACAGCGGCAAGAAC
TGGCGGCACGTGTACAAGGCTCTAACATTGCTGGACTACCTGCTCAAGACGGGCTCCGAGCGGGTGGCC
ACCAGTGCCGCGAGAACCCTACACCATCCAGACACTCAAGGACTTCCAGTACATCGACCGGACGGCAA
GGACCAGGGCGTCAACGTGCGCGAGAAGGTCAAGCAGGTGATGGCCCTGCTCAAGGATGAGGAGCGGCTG
CGGAGGAGCGAACCACGCCCTCAAGACCAAGGAGCGCATGGCACTGGAGGGCATCGGCATTGGCAGTG
GGCAGCTGGGCTTACGCCCGCTACGGCGAGGACTACAGCCGCTCCCGGGGCTCCCGTCTCTACAA
CTCCTCTTTCGTACCCCGCTATACCTCCGACCTGGAGCAGGCCCGGCTCAGACGTGGGGGAAGAG
GAACTGCAGCTGCAGCTGGCCCTCGCCATGAGCCGTGAGGAGGCAGAGAAGCCTGTCCCCCAGCCCTCC
ACAGGGACGAGGACCTGCAGCTGCAGCTGGCTCTGCGCCTGAGCCGCGAGGAGCACGAGAAGGAGGTGAG
GTCCTGGCAGGGTATGGCTCCCCATGGCCAATGGTGCAGGGGCGGTGGTCCACCATCAGCGGGACAGA
GAGCCTGAGAGAGAAGAGAGAAAGGAGGAGGAGAAGCTAAAAACCAGCCAGTCTCCATCCTGGACTTGG
CTGACATCTTCGTACCTGCCCTGGCCCCGCCCTCCACACACTGCTCTGCTGACCCATGGGACATCCCAGG
TTTTAGGCCGAACACAGAGGCCAGTGGATCCTCCTGGGGGCTTCTGCAGACCCCTGGTCTCCGATCCCC
TCAGGAACCGTCTGTCCGAAGCCAGCCCTGGGATCTGACTCCCATGCTCTCCTCTGAGCCCTGGG
GCAGGACCCAGTGTGCTGCTGGGCCCCCACCACAGACCCCTGGGCCCTGAACTCTCCCCACCACAA
ACTCCCCAGCACTGGGGCTGACCCTGGGGAGCCTCCCTGGAGACCTCCGACACACCTGGTGGTGCCTCG
ACCTTTGACCCATTTGCCAAACCTCCAGAATCCACAGAGACCAAGGAGGGGCTGGAGCAGGCCCTGCCCT
CTGGGAAGCCAGCAGCCCTGTGGAGCTGGACCTGTTGGAGACCCAGCCCAAGTTCAGCAAAATGG
CACGAAGGAGCCAGATGCCCTGGACCTGGGCATACTAGGGGAAGCACTAACCCAGCCAAGCAAAGAGGCC
CGAGCTTGCCGGACTCCCGAGTCTTCTGGGTCCCTCAGCTTCTCCTTGGTCAACCTTGACTCGTTGG
TCAAGGCACCCAGGTTGCAAAGACCCGGAACCCCTTCTGACAGGTCTCAGCGCTCCGTCACCCACCAA
CCCGTTCCGGCGGGCGAGACGGGCGAGCCGACGCTAAACCAGATGCGCACCGGCTCGCCGGCGCTGGG
CTGGCAGGCGGGCTGTGGGGGCGCCCTGGGCTCCATGACCTACAGCGCTCTCTGCCCTCCCGCTCA
GCAGCGTGCCAGCTGGCTTGACCCTCCCGCCTCGGTTAGCGTCTTCCCGCAGGCCGGAGCCTTCGCACC
GCAGCCGCTGCTGCCACGCCGAGCTCAGCCGGGCGCGGCCCGCCCGCCCGCAGACCGGCACCAACCC
TTCCTC

ACGCGTACGCGGCCGCTCGAGCAGAACTCATCTCAGAAGAGGATCTGGCAGCAATGATATCCTGGATT
ACAAGGATGACGACGATAAGGTTAA

Protein Sequence: >RC212297 representing NM_017957
 Red=Cloning site Green=Tags(s)

```

MTTSALRRQVKNIHVNYSEAEIKVREATSNDPWGPPSSLMSEIADLTFNTVAFTEVMGMLWRLNDSGKN
WRHVYKALTLLDYLLKTGSERVAHQRENLYTIQTLKDFQYIDRDGKDQGVNVREKVKQVMALLKDEERL
RQERTHALKTKERMALEGIIGISGQLGFSRRYGEDYSRSGSPSSYNSSSSSPRYTSDLEQARPQTSGEE
ELQLQLALAMSREEAEKPVPPASHRDEDLQLQLALRLSRQEHEKEVRSWQGDGSPMANGAGAVVHHQRDR
EPEREERKEEEKLKTSQSSILDLADIFVPALAPPSTHCSADPWDIPGFRPNTEASGSSWGPSADPWSPIP
SGTVLSRSQPWDLTPMLSSSEPWGRTPVLPAGPPTTDPWALNSPHHKLPSTGADPWGASLETSDTPGGAS
TFDPFAKPESTETKEGLEQALPSGKPSVELDLFGDPSPSKQNGTKEPDALDLGILGEALTQPSKEA
RACRTPEFSLGPSASSL VNLD SLVKAPQVAKTRNPF LTGLSAPSPTNPF GAGETGRPTLNQMRTGSPALG
LAGGPVGA PLGSMTYSASLPLPLSSV PAGL TLPASVSVFPQAGAFAPQPLLPTPSSAGPRPPPPQTGTNP
FL
  
```

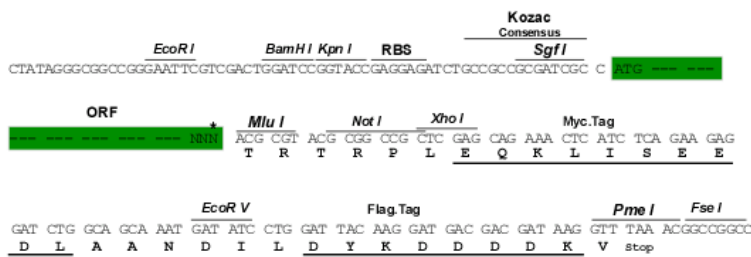
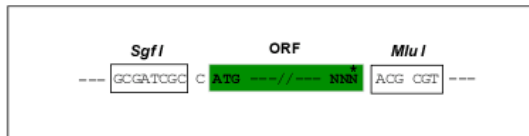
TRTRPLEQKLI SEEDLAANDILDYKDDDDKV

Chromatograms: https://cdn.origene.com/chromatograms/mk6594_d05.zip

Restriction Sites: Sgfl-MluI

Cloning Scheme:

Cloning sites used for ORF Shuttling:



* The last codon before the Stop codon of the ORF

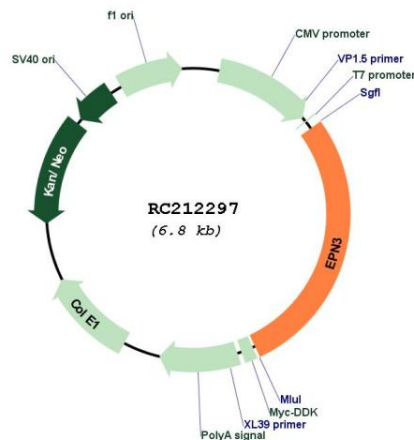
ACCN: NM_017957

ORF Size: 1896 bp

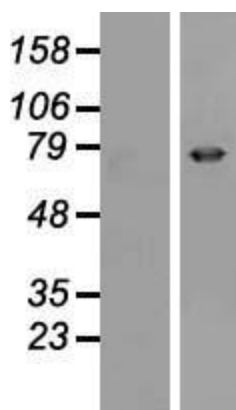
OTI Disclaimer: The molecular sequence of this clone aligns with the gene accession number as a point of reference only. However, individual transcript sequences of the same gene can differ through naturally occurring variations (e.g. polymorphisms), each with its own valid existence. This clone is substantially in agreement with the reference, but a complete review of all prevailing variants is recommended prior to use. [More info](#)

OTI Annotation: This clone was engineered to express the complete ORF with an expression tag. Expression varies depending on the nature of the gene.

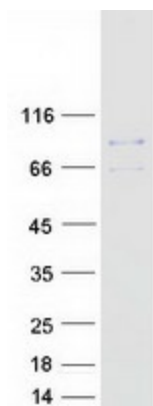
Components:	The ORF clone is ion-exchange column purified and shipped in a 2D barcoded Matrix tube containing 10ug of transfection-ready, dried plasmid DNA (reconstitute with 100 ul of water).
Reconstitution Method:	<ol style="list-style-type: none"> 1. Centrifuge at 5,000xg for 5min. 2. Carefully open the tube and add 100ul of sterile water to dissolve the DNA. 3. Close the tube and incubate for 10 minutes at room temperature. 4. Briefly vortex the tube and then do a quick spin (less than 5000xg) to concentrate the liquid at the bottom. 5. Store the suspended plasmid at -20°C. The DNA is stable for at least one year from date of shipping when stored at -20°C.
RefSeq:	<u>NM_017957.3</u>
RefSeq Size:	2943 bp
RefSeq ORF:	1899 bp
Locus ID:	55040
UniProt ID:	<u>Q9H201</u>
Cytogenetics:	17q21.33
Domains:	ENTH, UIM
Protein Pathways:	Endocytosis
MW:	68 kDa

Product images:


Circular map for RC212297



Western blot validation of overexpression lysate (Cat# [LY413399]) using anti-DDK antibody (Cat# [TA50011-100]). Left: Cell lysates from untransfected HEK293T cells; Right: Cell lysates from HEK293T cells transfected with RC212297 using transfection reagent MegaTran 2.0 (Cat# [TT210002]).



Coomassie blue staining of purified EPN3 protein (Cat# [TP312297]). The protein was produced from HEK293T cells transfected with EPN3 cDNA clone (Cat# RC212297) using MegaTran 2.0 (Cat# [TT210002]).