

## Product datasheet for RC212295

### DUX1 (NM\_012146) Human Tagged ORF Clone

#### Product data:

Product Type: Expression Plasmids  
Product Name: DUX1 (NM\_012146) Human Tagged ORF Clone  
Tag: Myc-DDK  
Symbol: DUX1  
Mammalian Cell Selection: Neomycin  
Vector: pCMV6-Entry (PS100001)  
E. coli Selection: Kanamycin (25 ug/mL)  
ORF Nucleotide Sequence: >RC212295 representing NM\_012146  
Red=Cloning site Blue=ORF Green=Tags(s)

TTTTGTAATACGACTCACTATAGGGCGGCCGGAATTCGTCGACTGGATCCGGTACCGAGGAGATCTGCCGCC**CGCATCGCC**

ATGGCCCTCTGACAGCTTTGGACGACACCCTCCCCGAGGAAGCCAGGGACCGGGAAGCGAATGATAC  
TCCTTCGACCCCGAGTCAAAGTGATGCCCTGCGAGCCTGCTTTGAGCGGAACCTGTACCCGGCATTGC  
CACCAAAGAAGAGCTGGCCAGGCATCGACATCCGGAGCCAGGGTCCAGATTTGGTTTCAGAATGAG  
AGATCATGCCAGTTGAGGCAGCACCGCGGCAATCTCGGCCCTGGCCGGGAGACGTGACCCGAAAAAG  
GCAGACGAAAGCGGACTGCCATACCCGGATCCCAAACCGCCCTGCTCCTCCGAGCCTTTGAGAAGGATCG  
CTTCCAGGCATTGCTGCCAGGGAAGAGCTGGCCAGAGAGACGGCCCTCCCGAGTCCAGGATTCAGATC  
TGGTTTCAGAATCGAAGAGCCAGGCACCGGGACAGTCTGGCAGGGCGCCACGCAGGCAAGCATCCGGT  
GCAATGCAGCCCAATTGGG

**ACGCGT**ACGCGGCCGCTCGAGCAGAAACTCATCTCAGAAGAGGATCTGGCAGCAAATGATATCCTGGATT  
ACAAGGATGACGACGATAAGGTTTAA

Protein Sequence: >RC212295 representing NM\_012146  
Red=Cloning site Green=Tags(s)

MALLTALDDTLPEEAQGPGRMILLSTPSQSDALRACFERNLYPGIATKEELAQQGIDIPEPRVQIWFQNE  
RSCQLRQHRRQSRPWPGRRDPOKGRKRRTAITGSQTALLLRAFEKDRFPGIAAREELARETGLPESRIQI  
WFQNRARRHRGQSGRAPTQASIRCNAAPIG

**TRTRPLEQKLI**SEEDLAANDILDYKDDDDKV

Chromatograms: [https://cdn.origene.com/chromatograms/mk8026\\_d02.zip](https://cdn.origene.com/chromatograms/mk8026_d02.zip)

Restriction Sites: Sgf-Mlul



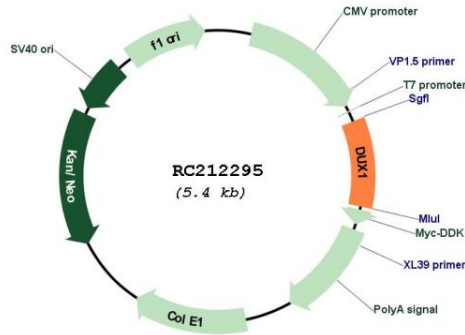
[View online >](#)



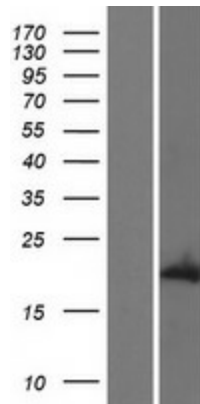
**Gene Summary:**

The human genome contains hundreds of repeats of the 3.3-kb family in regions associated with heterochromatin. The DUX gene family, including DUX1, resides within these 3.3-kb repeated elements (Beckers et al., 2001 [PubMed 11245978]). See DUX4 (MIM 606009). [supplied by OMIM, Mar 2008]

**Product images:**



Circular map for RC212295



Western blot validation of overexpression lysate (Cat# [LY415934]) using anti-DDK antibody (Cat# [TA50011-100]). Left: Cell lysates from untransfected HEK293T cells; Right: Cell lysates from HEK293T cells transfected with RC212295 using transfection reagent MegaTran 2.0 (Cat# [TT210002]).