

## Product datasheet for **RC212284**

### ZNF583 (NM\_152478) Human Tagged ORF Clone

#### Product data:

Product Type:	Expression Plasmids
Product Name:	ZNF583 (NM_152478) Human Tagged ORF Clone
Tag:	Myc-DDK
Symbol:	ZNF583
Mammalian Cell Selection:	Neomycin
Vector:	pCMV6-Entry (PS100001)
E. coli Selection:	Kanamycin (25 ug/mL)



[View online »](#)

**ORF Nucleotide Sequence:**

>RC212284 ORF sequence  
 Red=Cloning site Blue=ORF Green=Tags(s)

TTTTGTAATACGACTCACTATAGGGCGGCCGGAATTCGTCGACTGGATCCGGTACCGAGGAGATCTGCC  
 GCC**CGGATCGCC**

ATGTTCAAGGATTTGGTACATTTGGGATGTGGCTGTAATTTCTCTCAAGAGGAATGGGAATGGCTGA  
 ACCCTGCTCAGAGGAATTTGTACAGGAAAGTGATGTTGGAGAACTACAGGAGCTTGGTATCATTGGGAGT  
 TTCTGTTTCTAAGCCAGATGTGATCTCATTATTGGAGCAAGGAAAAGAGCCCTGGATGGTGAAGAAGGAG  
 GGAACAAGAGGCCATGCCCTGATTGGGAGTATGTATTTAAAAACAGTGAATTTTCATCAAAGCAAGAGA  
 CATATGAAGAATCATCAAAGTTGTGACAGTGGGAGCAAGACATCTTAGTTATAGCCTTGACTATCCAG  
 TTTGAGAGAAGACTGTCAAAGTGAAGTGGTATAAGAACCAGCTGGGAAGTCAAGAGGTACATCTTAGT  
 CAATTAATCATCACTCATAAAGAAATCCTTCCAGAAGTCAAATAAAGAATAAACAATCTTGCCAAA  
 CATTCCACCAGGATAAATCTTTGATATACAACAGAGTTTTCCACCAAAGAAAAAGCACATAAGCATGA  
 ACCACAAAAGAAAAGTTACCGAAAAAACTGTTGAAATGAAACATAGGAAAGTCTATGTAGAAAAGAAA  
 CTTTTGAAATGTAATGATTGTGAGAAAAGTCTCAACCAGAGCTCATCCCTTACTCTTCATCAGAGAATTC  
 ATACTGGAGAGAAACCTATGCATGTGTTGAATGTGGGAAAACGTTACGCCAGAGTGCAAACTTGGCGCA  
 ACATAAGAGAATACATACTGGAGAGAAACCTATGAATGTAAGAATGTAGGAAAGCCTTCAGCCAGAAT  
 GCACACCTGGCCCAACATCAGAGAGTTCATACTGGAGAGAAACCTTATCAGTGTAAAGAATGTAAGAAA  
 CCTTCAGCCAGATTGCACACCTGACTCAGCATCAGAGAGTTCATACTGGAGAGAGACCTTTCGAATGTAT  
 TGAATGTGGAAGGCCTTAGTAATGGTTCATTTCTTGCCTCAGCATCAGAGAATTCATACAGGAGAGAAA  
 CCTTATGTGTGAATGTGTGTGGGAAAGCCTTAGCCATCGTGGATACCTAATTGTACATCAGAGAATTC  
 ATACTGGAGAGAGACCTACGAATGTAAGGAATGTAGGAAAGCCTTCAGCCAGTATGCACACCTTGCTCA  
 ACATCAGAGAGTTCACTACTGGAGAAAAACCTTATGAATGTAAGTATGTAGGAAAGCCTTCAGCCAAAT  
 GCATACCTTGATCAACATCAGAGGGTTCATACTGGAGAGAAACCTATGAATGATTGAATGTGGGAAGG  
 CCTTTAGCAATAGTTCATCACTTGCACAACATCAGAGAAGTTCATACTGGAGAAAAACCTATATGTGTAA  
 GGAATGTAGGAAAACATTTAGCCAGAATGCAGGCCTTGCACAACATCAGAGAATTCATACTGGAGAGAAA  
 CCTTATGAATGTAATGTTGTGGGAAAGCATTAGCTATAGTGGATCTCTACTCTACATCAGAGAATTC  
 ATACTGGAGAAAGACCTATGAATGTAAGATTGCAGGAAATCTTCAGGCAGCGTGCACATCTTGCTCA  
 TCATGAGAGAATTCATACTATGGAGTATTCTTGACTCTTCTCTCCCTCACCTCCACATCAAATCAG  
 TTGCCAAGACCTGTAGGTTTCATCTCC

**ACGCGT**ACGCGGCCGCTCGAGCAGAAACTCATCTCAGAAGAGGATCTGGCAGCAAATGATATCCTGGATT  
 ACAAGGATGACGACGATAAGGTTTAA

**Protein Sequence:**

>RC212284 protein sequence  
 Red=Cloning site Green=Tags(s)

MSKDLVTFGDVAVNFSQEEWELNPAQRNL YRKVMLENYRSLVSLGVSVSKPDVISLLEQKPEPMMVKKE  
 GTRGPCPDWEYVFNSEFSSKQETYEESKVVTVGARHLSYSLDYPSLREDCQSEWDYKNQLGSQEVHLS  
 QLIITHKEILPEVQNKEYNKSQWTFHQDTIFDIQQSFPTKEAHKHEPQKKS YRKKSVEMKHRKVYVEKK  
 LLKCNDCQKVFNQSSSLTLHQRIHTGEKPYACVECGKTF SQSANLAQHKRIHTGEKPYECKEKRKAFSQN  
 AHLAQHQRVHTGEKPYQCKECKKAFS QIAHLTQHQRVHTGERPFECIECGKAFSNGSFLAQHQRIHTGEK  
 PYVCNVCGKAFSHRGLIVHQRIHTGERPYECKEKRKAFS QYAHLAHQHQRVHTGEKPYECKVCRKAFS QI  
 AYLDQHQRVHTGEKPYECIECGKAFS SNSSLAQHQRSHTGEKPYMCKEKRKTF SQNAGLAHQHQRIHTGEK  
 PYECNVCGKAFSYSGSLTLHQRIHTGERPYECKDCRKSFRQRAHLAHHRIHTMESFLTLSSPSPSTSNQ  
 LPRPVGFIS

**TR**TRPLEQKLISEEDLAANDILDYKDDDDKV

**Chromatograms:**

[https://cdn.origene.com/chromatograms/mk6460\\_e01.zip](https://cdn.origene.com/chromatograms/mk6460_e01.zip)

**Restriction Sites:**

Sgfl-Mlul

**Cloning Scheme:**


**ACCN:** NM\_152478

**ORF Size:** 1707 bp

**OTI Disclaimer:** The molecular sequence of this clone aligns with the gene accession number as a point of reference only. However, individual transcript sequences of the same gene can differ through naturally occurring variations (e.g. polymorphisms), each with its own valid existence. This clone is substantially in agreement with the reference, but a complete review of all prevailing variants is recommended prior to use. [More info](#)

**OTI Annotation:** This clone was engineered to express the complete ORF with an expression tag. Expression varies depending on the nature of the gene.

**Components:** The ORF clone is ion-exchange column purified and shipped in a 2D barcoded Matrix tube containing 10ug of transfection-ready, dried plasmid DNA (reconstitute with 100 ul of water).

- Reconstitution Method:**
1. Centrifuge at 5,000xg for 5min.
  2. Carefully open the tube and add 100ul of sterile water to dissolve the DNA.
  3. Close the tube and incubate for 10 minutes at room temperature.
  4. Briefly vortex the tube and then do a quick spin (less than 5000xg) to concentrate the liquid at the bottom.
  5. Store the suspended plasmid at -20°C. The DNA is stable for at least one year from date of shipping when stored at -20°C.

**RefSeq:** [NM\\_152478.3](#)

**RefSeq Size:** 2590 bp

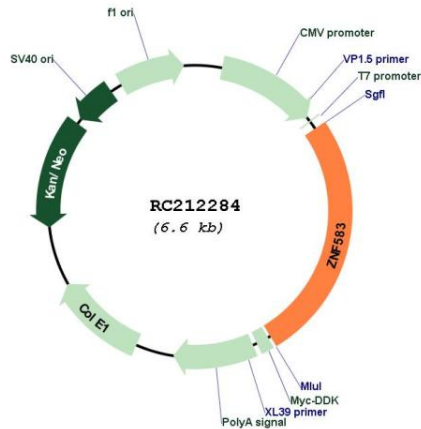
**RefSeq ORF:** 1710 bp

**Locus ID:** 147949

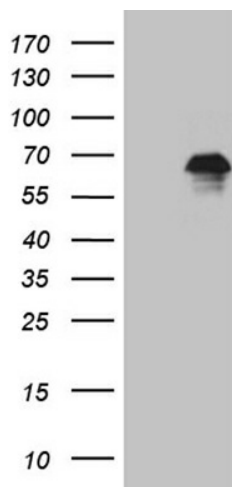
**UniProt ID:** [Q96ND8](#)

**Cytogenetics:** 19q13.43

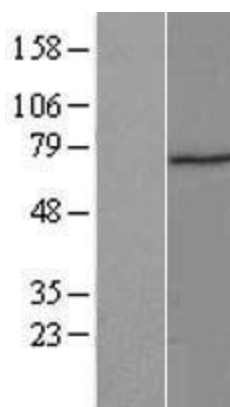
**Domains:** KRAB, zf-C2H2  
**Protein Families:** Transcription Factors  
**MW:** 66 kDa  
**Gene Summary:** May be involved in transcriptional regulation.[UniProtKB/Swiss-Prot Function]

**Product images:**


Circular map for RC212284



HEK293T cells were transfected with the pCMV6-ENTRY control (Cat# [PS100001], Left lane) or pCMV6-ENTRY ZNF583 (Cat# RC212284, Right lane) cDNA for 48 hrs and lysed. Equivalent amounts of cell lysates (5 ug per lane) were separated by SDS-PAGE and immunoblotted with anti-ZNF583 (Cat# [TA810527])(1:2000). Positive lysates [LY407532] (100ug) and [LC407532] (20ug) can be purchased separately from OriGene.



Western blot validation of overexpression lysate (Cat# [LY431991]) using anti-DDK antibody (Cat# [TA50011-100]). Left: Cell lysates from untransfected HEK293T cells; Right: Cell lysates from HEK293T cells transfected with [RC228964] using transfection reagent MegaTran 2.0 (Cat# [TT210002]).