

## Product datasheet for **RC212279**

### SEZ6 (NM\_178860) Human Tagged ORF Clone

#### Product data:

Product Type:	Expression Plasmids
Product Name:	SEZ6 (NM_178860) Human Tagged ORF Clone
Tag:	Myc-DDK
Symbol:	SEZ6
Synonyms:	BSRPC
Mammalian Cell Selection:	Neomycin
Vector:	pCMV6-Entry (PS100001)
E. coli Selection:	Kanamycin (25 ug/mL)



[View online »](#)

**ORF Nucleotide Sequence:**

>RC212279 representing NM\_178860.  
 Blue=ORF Red=Cloning site Green=Tag(s)

```
GCTCGTTTAGTGAACCGTCAGAATTTTGTAAACGACTCACTATAGGGCGGCCGGGAATTCGTGACTG
GATCCGGTACCGAGGAGATCTGCCGCCCGGATCGCC
ATGCGCCCGGTAGCCCTGCTGCTCCTGCCCTCGCTGCTGGCGCTCCTGGCTCACGGACTCTCTTTAGAG
GCCCCAACCGTGGGGAAGGACAAGCCCCAGGCATCGAGGAGACAGATGGCGAGCTGACAGCAGCCCC
ACACCTGAGCAGCCAGAACGAGGCGTCCACTTTGTCAACAGCCCCACCTTGAAGCTGCTCAACCAC
CACCCGCTGCTTGAGGAATTCCTACAAGAGGGGCTGGAAGGGGAGATGAGGAGCTGAGGCCAGCACTG
CCCTTCCAGCCTGACCCACCTGCACCCTTACCCCAAGTCCCCTTCCCGCCTGGCCAACCAGGACAGC
CGCCCTGTCTTTACCAGCCCCACTCCAGCCATGGCTGCGGTACCCACTCAGCCCCAGTCCAAGGAGGGA
CCCTGGAGTCCGGAGTCAGAGTCCCTATGCTTCAATCACAGCTCCCCTACCTCAGGGGCCAGCATG
GCAGTGCCACCCTAGGCCAGGGGAGATGCCAGCACTACACCCCCAGCAGAGCTGGACACCAACC
CAAGAGGGTCTTGAGACATGGGAAGGCCGTGGTTGCAGAGTTGTGTCCAGGGCGCAGGGATCGGG
ATCCAGGGGACCATCACCTCCTCCAGCTTCAGGAGATGATGAGGAGACCACCACTACCACCACCATC
ATCACCACCACCATCACACAGTCCAGACACCAGGCCCTTGTAGCTGGAATTTCTCAGGCCCAGAGGGC
TCTCTGGACTCCCCTACAGACCTCAGCTCCCCACTGATGTTGGCCTGGACTGCTTCTTCTACATCTCT
GTCTACCTGGCTATGGCGTGGAAATCAAGTCCAGAATATCAGCCTCCGGGAAGGGGAGACAGTACT
GTGGAAGGCCCTGGGGGGCCTGACCCACTGCCCTGGCCAACCAGTCTTCTCTGCTGCGGGGCCAAGTC
ATCCGACGCCCAACCAAGCGGCCCTGAGGTTCCAGAGCCTCCCGCCACCGGCTGGCCCTGGCACC
TTCCATTTCCATTACCAAGCCTATCTCTGAGCTGCCACTTTCCCGTCTCCAGCTTATGGAGATGTG
ACTGTACCAGCCTCCACCCAGGGGTAGTGCCCGCTTCCATTGTGCCACTGGCTACCAGCTGAAGGGC
GCCAGCATCTCACCTGTCTCAATGCCACCCAGCCCTTCTGGGATTCAAAGGAGCCCGTCTGATCGCT
GCTTGGCGGGAGTGATCCGCAATGCCACCACCGCCGATCGTCTCTCCAGGCTTCCCGGGCAACTAC
AGCAACAACCTCACCTGTCACTGGCTGTTGAGGCTCCTGAGGGCCAGCGGCTACACCTGCACTTTGAG
AAGTTTTCCCTGGCAGAGGATGATGACAGGCTCATCATTGCAATGGGGACAACGTGGAGGCCCAACA
GTGTATGATTCTATGAGGTGGAATACCTGCCATTGAGGGCCTGCTCAGCTCTGGCAAACACTTCTTT
GTTGAGCTCAGTACTGACAGCAGCGGGCAGCTGCAGGCATGGCCCTGCGCTATGAGGCCTTCCAGCAG
GGCCATTGCTATGAGCCCTTTGCAAATACGGTAACTTCAAGCAGCAGCACACCCACCTACCCTGTGGGT
ACCACTGTGGAGTTCAGCTGCGACCCTGGCTACACCCTGGAGCAGGGCTCCATCATCATGAGTGTGT
GACCCCCAGACCCCAAGTGAATGAGACAGAGCCAGCCTGCCGAGCCGTGTGCAGCGGGGAGATCACA
GACTCGGCTGGCGTGGTACTCTCTCCAACTGGCCAGAGCCCTACGGTCTGTGGCAGGATTGTATCTGG
GGTGTGCATGTGGAAGAGGACAAGGCATCATGCTGGACATCCGAGTGTGCGCATAGGCCCTGGTGTG
GTGCTTACCTTCTATGATGGGATGACCTGACGGCCCGGGTCTGGGCCAGTACTCAGGGCCCCGTAGC
CACTTCAAGCTCTTTACCTCCATGGCTGATGTCACCATTAGTCCAGTCCGACCCCGGGACCTCAGTG
CTGGGCTACCAGCAGGGCTTCGTATCCACTTCTTTGAGGTGCCCGCAATGACACATGTCCGGAGCTG
CCTGAGATCCCCAATGGCTGGAAGAGCCATCGCAGCCTGAGCTAGTGCACGGCACCGTGGTCACTTAC
CAGTGTACCCCTGGCTACCAGGTAGTGGATCCAGTGTCTCATGTGCCAGTGGACCTAACTTGGAGT
GAGGACTGCCCTCATGCCAGAGGGTACTTCTGCCACGATCCTGGAGATGTGGAGACACAGCCGACGC
CTCATATCCAGCCCCAAGTTTCCCGTGGGGGCCACCGTGCAATATATCTGTGACCAGGGTTTTGTGCTG
ATGGGCAGCTCCATCCTCACCTGCCATGATCGCCAGGCTGGCAGCCCCAAGTGGAGTGACCGGGCCCT
AAATGTCTCCTGGAACAGCTCAAGCCATGCCATGGTCTCAGTGCCCTGAGAATGGTGCCCGAAGTCTCT
GAGAAGCAGCTACACCCAGCAGGGGCCACCATCCACTTCTCGTGTGCCCTGGCTATGTGCTGAAGGGC
CAGGCCAGCATCAAGTGTGTGCTGGGCACCCCTCGCATTGGAGTGACCCCCACCCATCTGTAGGGCT
GCCTCTCTGGATGGGTTCTACAACAGTCGCAGCCTGGATGTTGCCAAGGCACCTGCTGCCTCCAGCACC
CTGGATGTGCCACATTGCAGTGCCATCTTCTTCCACTGGTGGCGATGGTGTGTTGGTAGGAGGT
GTATACTTCTACTTCTCCAGGCTCCAGGAAAAAGCTCCCTGCAGCTGCCCGCCCCCGCCCCGCCCC
TACAACCGCATTACCATAGAGTCAGCGTTTGACAATCCAACTTACGAGACTGGATCTCTTCTTTGCA
GGAGACGAGAGAATA
ACGCGTACGCGGCCGCTCGAGCAGAACTCATCTCAGAAGAGGATCTGGCAGCAAATGATATCCTGGAT
TACAAGGATGACGACGATAAGGTTTAAACGGCCGGC
```

**Protein Sequence:** >Peptide sequence encoded by RC212279  
 Blue=ORF Red=Cloning site Green=Tag(s)

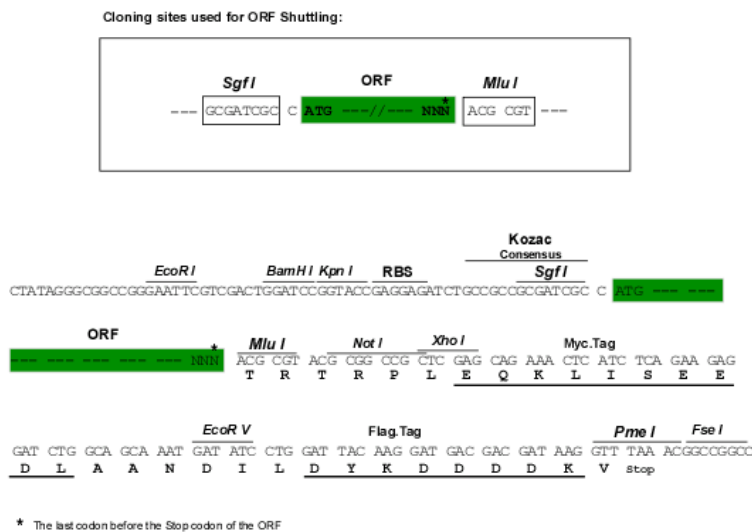
MRPVALLLLPSLLALLAHGLSLEAPTVGKGQAPGIEETDGELTAAPTPEQPERGVHVFVTTAPTLKLLNH  
 HPLLEEFLQEGLEKGDLELRPALPFQDPPAPFTPSPLPRLANQDSRPVFTSPTPAMA AVPTPQSQKEG  
 PWSPESESPMLRITAPLPPGSM AVPTLGPGEIASTTPPSRAWPTQEGPGDMGRPWVAEVVSQGAGIG  
 IQGTITSSASGDDEETTTTTTITTTITTVQTPGPCSWNFGSGPEGLDSPTDLSSPTDVLDCFFYIS  
 VYPGYGVEIKVQNISLREGETVTVVEGLGGPDPLANQSFLLRGQVIRSPHQAALRFQSLPPPAGPGT  
 FHFHYQAYLLSCHFRRPAYGDVTVTSLHPGGSARFHCATGYQLKGARHLTCLNATQPFWDSKEPVCIA  
 ACGGVIRNATTGRIVSPGFPGNYSNNLTCHWLEAPEGQRLHLHFEKVS LAEDDDRLIIRNGDNVEAPP  
 VYDSYEVEYLP IEGLLSSGKHFFVELSTDSSGAAAGMALRYEAFQQGHCEYEPFKYGNFSSSTPTYVVG  
 TTVEFSCDPGYTLEQGSIIIECVDPHPQWNETEPACRAVCSGEITDSAGVVLSPNWPEPYGRGQDCIW  
 GVHVEEDKRIMLDIRVLRIGPGDVLTFYDGDLLTARVLGQYSGPRSHFKLFTSMADVTIQFQSDPGTSV  
 LGYQQGFVIHFVEVPRNDTCPELPEIPNGWKSPSQPELVHGTVVTYQCYPGYQVVGSSVLMCQWDLTWS  
 EDLPSCQRVTSCHDPGDVEHSRRLISSPKFPVGATVQYICDQGFVLMGSSILTCHDRQAGSPKWSDRAP  
 KCLLEQLKPC HGLSAPENGARSPEKQLHPAGAT IHFSCAPGYVLKGQASIKCVPGHPSHWSDPPPICRA  
 ASLDGFYNSRSLDVAKAPAASSTLDAAHIAAAIFLPLVAMVLLVGGVYFYF SRLQKGSSQLPRRPRRP  
 YNRITIESAFDNPTYETGSLSFAGDERI  
 TRTRPLEQKLISEEDLAANDILDYKDDDDKV

Recombinant protein using RC212279 also available, [TP312279M](https://cdn.origene.com/chromatograms/mk8013_d08.zip)

**Chromatograms:** [https://cdn.origene.com/chromatograms/mk8013\\_d08.zip](https://cdn.origene.com/chromatograms/mk8013_d08.zip)

**Restriction Sites:** SgfI-MluI

**Cloning Scheme:**

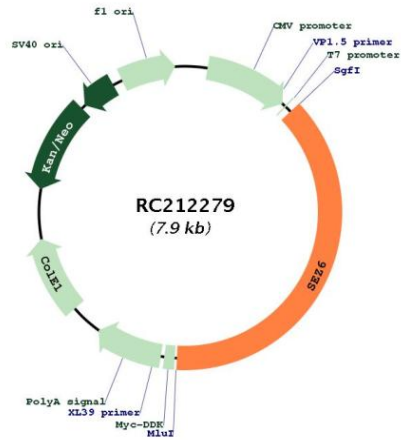


**ACCN:** NM\_178860

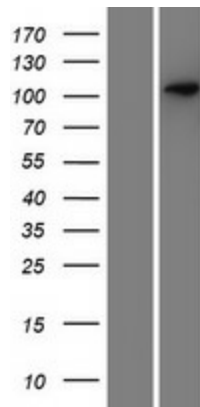
**ORF Size:** 2982 bp

<b>OTI Disclaimer:</b>	The molecular sequence of this clone aligns with the gene accession number as a point of reference only. However, individual transcript sequences of the same gene can differ through naturally occurring variations (e.g. polymorphisms), each with its own valid existence. This clone is substantially in agreement with the reference, but a complete review of all prevailing variants is recommended prior to use. <a href="#">More info</a>
<b>OTI Annotation:</b>	This clone was engineered to express the complete ORF with an expression tag. Expression varies depending on the nature of the gene.
<b>Components:</b>	The ORF clone is ion-exchange column purified and shipped in a 2D barcoded Matrix tube containing 10ug of transfection-ready, dried plasmid DNA (reconstitute with 100 ul of water).
<b>Reconstitution Method:</b>	<ol style="list-style-type: none"><li>1. Centrifuge at 5,000xg for 5min.</li><li>2. Carefully open the tube and add 100ul of sterile water to dissolve the DNA.</li><li>3. Close the tube and incubate for 10 minutes at room temperature.</li><li>4. Briefly vortex the tube and then do a quick spin (less than 5000xg) to concentrate the liquid at the bottom.</li><li>5. Store the suspended plasmid at -20°C. The DNA is stable for at least one year from date of shipping when stored at -20°C.</li></ol>
<b>RefSeq Size:</b>	4306 bp
<b>RefSeq ORF:</b>	2985 bp
<b>Locus ID:</b>	124925
<b>UniProt ID:</b>	<a href="#">Q53EL9</a>
<b>Cytogenetics:</b>	17q11.2
<b>Protein Families:</b>	Druggable Genome, Transmembrane
<b>MW:</b>	107.4 kDa
<b>Gene Summary:</b>	The protein encoded by this gene is thought to contain five cysteine-rich motifs that are similar to sushi domains, as well as two domains similar to the amino terminal half of the CUB (for complement C1r/C1s, Uegf, Bmp1) domain. Mutations in this gene have been associated with febrile seizures. [provided by RefSeq, Jul 2016]

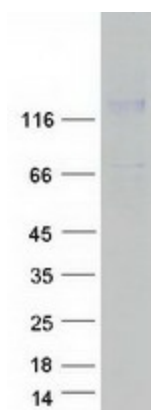
Product images:



Circular map for RC212279



Western blot validation of overexpression lysate (Cat# [LY405824]) using anti-DDK antibody (Cat# [TA50011-100]). Left: Cell lysates from untransfected HEK293T cells; Right: Cell lysates from HEK293T cells transfected with RC212279 using transfection reagent MegaTran 2.0 (Cat# [TT210002]).



Coomassie blue staining of purified SEZ6 protein (Cat# [TP312279]). The protein was produced from HEK293T cells transfected with SEZ6 cDNA clone (Cat# RC212279) using MegaTran 2.0 (Cat# [TT210002]).