

## Product datasheet for RC212270

### PTPN20B (PTPN20) (NM\_001042358) Human Tagged ORF Clone

#### Product data:

Product Type:	Expression Plasmids
Product Name:	PTPN20B (PTPN20) (NM_001042358) Human Tagged ORF Clone
Tag:	Myc-DDK
Symbol:	PTPN20B
Synonyms:	bA42B19.1; bA142I17.1; CT126; PTPN20A; PTPN20B
Mammalian Cell Selection:	Neomycin
Vector:	pCMV6-Entry (PS100001)
E. coli Selection:	Kanamycin (25 ug/mL)
ORF Nucleotide Sequence:	>RC212270 representing NM_001042358 Red=Cloning site Blue=ORF Green=Tags(s)

TTTTGTAATACGACTCACTATAGGGCGGCCGGAATTCGTCGACTGGATCCGGTACCGAGGAGATCTGCC  
GCC**CGATCGCC**

ATGATTGTAACGATTATGAGGGAAATGACTCTGAAGCAGAAGACTTGAATTTTCAGGGAGACTTTGCCTT  
CATCAAGTCAGGAAAACACACCTAGATCAAAGTTTTTTGAAAATAAAGTTAATTCAGAGAAGGTA  
TTCTCTTCGGAATTTCCACATAATGATTATGAGGATGTTTTGAAAGCCTTCAGAAAGTGGCAGTGAT  
CCCAGCATGTGGACAGCCAGAGGCCCTTCAGAAGAGACAGGTGGAGCAGTGAGGATGAGGAGGCTGCAG  
GGCCATCACAGGCTCTCTCCCTCTACTTTCTGATACGCGCAAATTTGTTCTGAAGGAGAACTAGATCA  
GTTGGCTCAGATTCGGCCATTAATATTCATTTTCATGAGCAGACGCCATCAAGGATTGTTTGAAATC  
CTTGAGGAAAAACAGCAGCGTATGATATCATGCAGGAATTTATGGCTTTAGAACTTAAGAATCTGCCTG  
GTGAGTTCAACTCTGGGAATCAACCAAGCAACAGAGAAAAAATAGATACCGAGATATTCTTCCATATGA  
TTCAACACGCGTTCTCTTGAAAAAGCAAGGACTACATCAATGCTAGTTATATTAGAATAGTCAATTGT  
GGAGAAGAGTATTTTTATCGCTACTCAAGGACCACTGCTGAGCACCATAGATGACTTTTGCCAAATGG  
TGTTGGAAAATAATCAAATGTTATTGCCATGATAACCAGAGAGATAGAAGGTGGAATTATCAAATGCTA  
CCATTACTGGCCATTTCTCTGAAGAAGCCATTGGAATTGAAACACTTCCGTGTATTCTGGAGA  
CAGATACTTCAATTTTCATCATTGCAATGTTTCAAGTTGTGGAGAAGTCCACGGAACTAGTCACTCTG  
TAAACAGTTGCAGTTCACCAAGTGCCAGACCATGGCACTCCTGCCTCAGCAGATAGCTTCATAAAATA  
TATTCGTTATGCAAGGAAGGCCACCTTACAGGACCCATGGTTGTTCACTGCAGTGCCGGCATAGGCCGG  
ACAGGGGTGTTCTATGTGTGGATGTCGTGTTCTGTGCCATCGTAAAGA  
ACTGTTCAATCAACATCATGG  
ATATAGTGGCCAAATGAGAGAACAACGTTCTGGCATGGTTCAAACGAAGGAGCAGTATCACTTTTGTTA  
CGATATTGTGCTTGAAGTTCTTCGAAACTTCTGACTTTGGAT

AG**CGGACCG**ACGCGTACGCGGCCGCTCGAGCAGAACTCATCTCAGAAGAGGATCTGGCAGCAAATGATATCC  
TGGATTACAAGGATGACGACGATAAGGTTTAA



[View online »](#)

**Protein Sequence:** >RC212270 representing NM\_001042358  
Red=Cloning site Green=Tags(s)

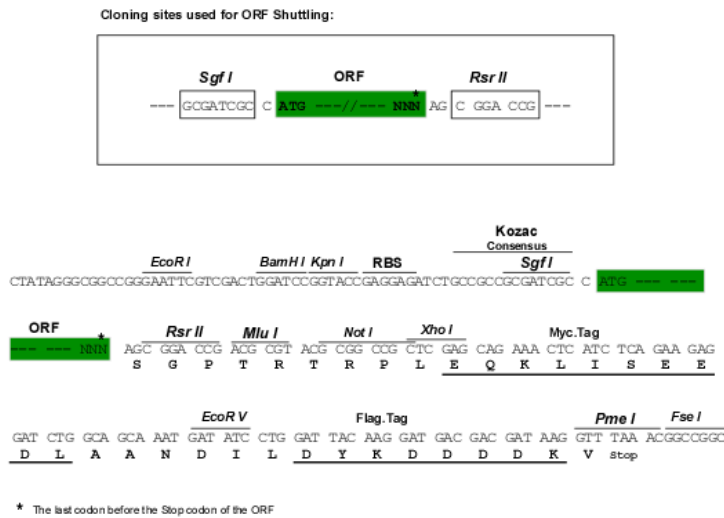
MIVNDYEGNDSEAEDLNFRETLPSSSQENTPRSKVFENKVNSEKVKLSLRNFPHNDYEDVFEEPSESGSD  
 PSMWTARGPFRDRWSSSEDEEAAGPSQALSPLLSDTRKIVSEGELDQLAQIRPLIFNFHEQTAIKDCLKI  
 LEEKTAAYDIMQEFMALELKNLPGFNSGNQPSNREKNRYRDILPYDSTRVPLGKSKDYINASYIRIVNC  
 GEEYFYIATQGPLLSTIDDFWQMVLENNSNVIAMITREIEGGIICKYHYWPI SLKKPLELKHFRVFLNY  
 QILQYFIIRMFQVVEKSTGTSHSVQLQFTKWPDHGTPASADSF IKYIRYARKSHLTGPMVVHCSAGIGR  
 TGVFLCVDVVFCAIVKNCSFNIMDIVAQMREQRSGMVQTKEQYHFCYDIVLEVLRKLLTLD

SGPTRTRRLEQKLI SEEDLAANDILDYKDDDDKV

**Chromatograms:** [https://cdn.origene.com/chromatograms/mk8058\\_a08.zip](https://cdn.origene.com/chromatograms/mk8058_a08.zip)

**Restriction Sites:** SgfI-RsrII

**Cloning Scheme:**



**ACCN:** NM\_001042358

**ORF Size:** 1233 bp

**OTI Disclaimer:** The molecular sequence of this clone aligns with the gene accession number as a point of reference only. However, individual transcript sequences of the same gene can differ through naturally occurring variations (e.g. polymorphisms), each with its own valid existence. This clone is substantially in agreement with the reference, but a complete review of all prevailing variants is recommended prior to use. [More info](#)

**OTI Annotation:** This clone was engineered to express the complete ORF with an expression tag. Expression varies depending on the nature of the gene.

**Components:** The ORF clone is ion-exchange column purified and shipped in a 2D barcoded Matrix tube containing 10ug of transfection-ready, dried plasmid DNA (reconstitute with 100 ul of water).

**Reconstitution Method:**

1. Centrifuge at 5,000xg for 5min.
2. Carefully open the tube and add 100ul of sterile water to dissolve the DNA.
3. Close the tube and incubate for 10 minutes at room temperature.
4. Briefly vortex the tube and then do a quick spin (less than 5000xg) to concentrate the liquid at the bottom.
5. Store the suspended plasmid at -20°C. The DNA is stable for at least one year from date of shipping when stored at -20°C.

**RefSeq:** [NM\\_001042358.4](#), [NP\\_001035817.1](#)

**RefSeq Size:** 2870 bp

**RefSeq ORF:** 1236 bp

**Locus ID:** 26095

**UniProt ID:** [Q4JDL3](#)

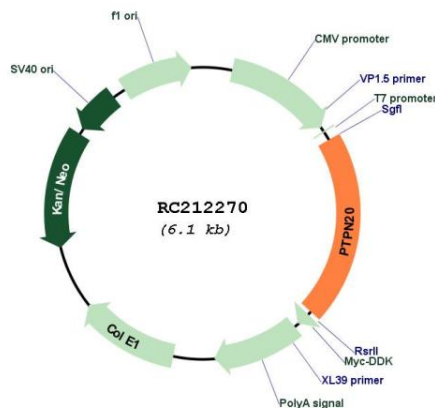
**Cytogenetics:** 10q11.22

**Protein Families:** Druggable Genome, Phosphatase

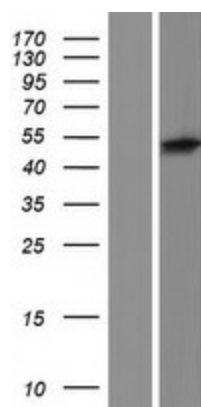
**MW:** 47.2 kDa

**Gene Summary:** The product of this gene belongs to the family of classical tyrosine-specific protein tyrosine phosphatases. Many protein tyrosine phosphatases have been shown to regulate fundamental cellular processes. The encoded protein appears to be targeted to sites of actin polymerization. A pseudogene of this gene has been defined on chromosome 10. Alternative splicing results in multiple transcript variants. [provided by RefSeq, Apr 2014]

## Product images:



Circular map for RC212270



Western blot validation of overexpression lysate (Cat# [LY420847]) using anti-DDK antibody (Cat# [TA50011-100]). Left: Cell lysates from untransfected HEK293T cells; Right: Cell lysates from HEK293T cells transfected with RC212270 using transfection reagent MegaTran 2.0 (Cat# [TT210002]).