

## Product datasheet for RC212262

### GPRASP1 (NM\_001099411) Human Tagged ORF Clone

#### Product data:

Product Type:	Expression Plasmids
Product Name:	GPRASP1 (NM_001099411) Human Tagged ORF Clone
Tag:	Myc-DDK
Symbol:	GPRASP1
Synonyms:	GASP; GASP-1; GASP1
Vector:	pCMV6-Entry (PS100001)
E. coli Selection:	Kanamycin (25 ug/mL)
Cell Selection:	Neomycin
ORF Nucleotide Sequence:	>RC212262 representing NM_001099411 Red=Cloning site Blue=ORF Green=Tags(s)

TTTTGTAATACGACTCACTATAGGGCGGCCGGAATTCGTCGACTGGATCCGGTACCGAGGAGATCTGCC  
GCCGCGATCGCC

ATGACTGGGGCAGAGATTGAGTCTGGTGCCAGGTCAAGCCTGAAAAGAAGCCTGGGAAGAGGTTGTAG  
GTGGGGCTGAGATAGAGAATGATGTCCTCTGGTGGTCAGACCCAAGTTAGGACCCAGGCCAGATAAT  
GCCTGGGGCAAGGCCAAGAATAAGTCCAAGTTATGCCTGGAGCAAGCACCAAAGTTGAGACAAGTGCA  
GTGGGTGGGGCAGCCCTAAGAGTAAGGCCAAGGCAATACCTGTTTCACGATTTAAGGAAGAAGCCAGA  
TGTGGGCTCAGCCAGGTTTGGTGTGAAAGATTGTCTAAGACAGAGAGAAACTCCAGACCAATATCAT  
AGCCTCTCCACTTGTCACTACTGATTCTGTCTTGGTTGCTAAAACAAAGTACCTGTCTGAGGATAGAGAA  
CTGGTTAATACAGACTGAGAGCTTCTCTAGAAGGAAGGCCATTACCAAGCAGGATCCAGCCTTCTT  
TTAGGTCAAAGGAGGAGACCAATATGGGGTCTGGTGTCTCCTAGGCCTACATCCAAACAAGAAGCCTC  
TCCTAATTCTGATTTCAAATGGGTAGACAAATCTGTGAGTTTCTTGTCTGGAGTGGAGATGAGGTCCT  
GCAAAATTTATCCTGGGAATAGGGTAAAAGACAGTAACAGATCCATGCACATGGCCAATCAAGAGGCTA  
ATACCATGTCTAGTCCCAAATCAACAGGAGCTCTATATTGCATCTAGTTCTGGTTCTGAGGATGAGTC  
TGTTAAGACACCCTGGTTCTGGCCAGAGATAAAACCAATACCTGGTCTGGGCCAGGGAAGATCCCAAT  
AGCAGGTCAGGTTTAGGTCTAAGAAAAGAGTCTATGTTGAATCAAGTTCTGGATCTGAGCATGAAGACC  
ATTTGGAGTCTGGTTTGGGGCTGGAAAGGAGGCCAAATTCAGGTCCAAATGAGAGCTGGGAAGGAGGC  
CAATAACAGGGCCAGGCACAGGGCCAAGCGAGAAGCTTGCAATTTTCATGCCTGGGTCTATAGATGTA  
ATTAAGAAAGAGTCTGTTTCTGGCCTGAAGAAAATGCTAATACCTTTTCAAGGCCCATGATCAAGAAAG  
AGGCCAGGGCCAGAGCAATGACAAAGGAAGAGGCCAAAACCAAGGCCGAGCCAGGGCCAAGCAAGAAGC  
CAGGTGAGAGGAGGAAGCCCTCATTGGGACCTGGTTCTGGGCTACAGACGAGTCCAGCATGCCAGATGAA  
GCCAGCATAGAGTCCAGTCTACAAGTGGAGGATGAGTCCATAATTGGGAGTTGGTTCTGGACTGAAGAAG  
AGGCCAGTATGGGGACTGGGGCTAGCAGTAAATCCAGACCAAGGACTGATGGGGAGCGTATTGGTGATTC  
CTTATTTGGGGCTAGGAAAAGACCAGTATGAAAAGTGGGGCTGAGGCCACCTCTGAATCTATACTAGCA  
GCTGATGATGAACAGGTCATTATTGGTTCTGGTCTGGGCTGGTGAAGAGGTCACCAAGAGGCTGAGG



[View online >](#)

AAGAGACCATTTTTGGGTCTGGTCTGGGTCATTGATGCGGCCAGTGTGGAATCTGGTGTGGGGTCAG  
CTGTGAGTCCAGGACAAGGTCTGAGGAAGAAGAGGTCAATGGTCCCTGGTTTTGGTCTGGAGAACAAGTT  
GATATAGAGGCTGGAATCGGAGAAGAGGCCAGGCCAGGAGCTGAAGAAGAGACAATTCGGGTCCTGGT  
TTTGGGCTGAAAACCAGACCTATATGGATTGTAGGGCTGAAACTAGCTGTGACCCATGCAAGGGGCTGA  
GGAGGAGGAGCCATTATTGGGTCTGGTTTTGGACCAGAGTGAAGCTTGTGTGGAGGGTGATGTCAAC  
AGCAAGTCTAGCCTGGAGGACAAGGAAGAGGCCATGATACCATGTTTTGGAGCCAAGAAGAGGTCAGTA  
TGAAGCATGGGACTGGTGTGATGCAGATTTATGGCAGGGGCTGAGGAGACCAATAATAAGTCTTGCTT  
CTGGGCAGAAAAAGAACCTGTATGTATCTGCCGGTGGAGGAAGTTGGAAGTCTAGGCCAGAGGAGGAA  
GAGGACATTGTCAATTCGTGGTCTGGTCCAGAAAATACACAAAGCCAGAGGCCATTATAGGGTCTGGT  
TATGGGCTACAGAAGAGAGTAATATAGATGGGACTGGAGAAAAGGCCAAGTTACTGACTGAAGAGGAGAC  
CATAATCAATTCCTGGTCTGGAAAAGATGAAGCCATTCAGAGGCTACTGACAGAGAAGAGTCCAGG  
CCAGAAGCTGAGGAGGGGACATTATTGGTCTTGGTCTGGGCTGGAGAAGAGGACAGACTAGAGCCAG  
CTGCTGAGACTAGAGAAGAAGACAGGCTAGCAGCTGAGAAAAGAGTATTGTTGGTCTGGTTTGGGGC  
CAGAGAAGAGACCATTAGAAGAGAGGCTGGTCTTGCAGCAAATCCAGTCTAAAGCTGAAGAGGAAGAA  
GTCATTATTGGTCTGGTCTGGGAAGAAGAGGCCAGTCCGGAGGCAGTGGCAGGAGTCCGCTTTGAGT  
CAAAGCCTGGGACTGAGGAGGAAGAAATCACTGTTGGGTCTGGTCTGGCCTGAAGAAGAAGCCAGTAT  
ACAGGCTGGATCTCAGGAGTAGAGGAAATGGAGTCAGAGACTGAAGAGGAAACCATTTTTGGGTCTGG  
TTCTGGGATGAAAAGAAGTCAAGTGAAGAAGCAGGACCATGCTGTGTATCCAAGCCAGAGGATGATGAAG  
AGATGATTGTTGAGTCTGGTCTGGTCTAGAGACAAAGCCATTAAGGAACTGGAAGTGTGGCCACCTG  
TGAGTCCAAGCCAGAAAATGAGGAAGGGGCCATTGTTGGGTCTTGGTTTGAGGCTGAAGATGAGGTAGAT  
AACAGGACTGACAATGGAAGCAACTGTGGTCCAGGACATTAGCTGATGAAGATGAGGCCATAGTGGGGT  
CCTGGTCTGGCAGGAGATGAGGCCATTTGAATCAAATCCTAGCCCCGTGTTGAGGGCCATTTGCAG  
GTCCACGTGTTCAAGTGAACAGGAGCCTGATCCTCACGAGGCCCTCAGAGTTGGGAGGAGTCACTGTT  
CAGTTCAAGCCTGGTCCATGGGGTAGGGTCCGCTTCCCATCTATAAGCCCTTTAGATTTCCGAAAAGG  
CAGCATCTTTATTCTGTGAAATGTTGGGGCAAAACCAGGAACATGGTACTTAGCCAGAGGGGAAGA  
TCAGGAATCTTTGCTTACGCTGATCAGCCTAGTCTGAGTTCCTCATTTCAGTATGATCCTTCTACAGG  
TCAGTCCAGGAAATTCGAGAGCATCTTAGGGCCAAGGAGAGTACAGAGCCTGAGAGTTCATCCTGTAAC  
GCATACAATGTGAGCTGAAAATGGTCTGAAGAGTTGAAGAAGTCTTTTATTAATGAAAAAATTCG  
GGATCCTTTTATTCATGAAATATCTAAAATCGCAATGGGTATGAGAAGTGCTTCTCAATTTACCCGAGAT  
TTCATTCGAGATTCAGGTGTTGTCTCACTATTGAAACCTTGCTTAATTATCCGCTCCTCCGAGTTAGAA  
CAAGTTTTTTGAAAATATGATTCGCATGGCCCCACCTTATCCGAATCTAACATAATTCAGACATACAT  
ATGTAAAGTGTGTGAGGAAACCCTTGCTTATAGCGTGGATCCCCGGAACAGCTGTCTGGAATAAGGATG  
ATTAGACATCTCACTACTACTGACTATCACACACTGGTTGCCAATTATATGTCTGGGTTTCTCTCCT  
TATTAGCTACAGGCAATGCCAAAACAAGGTTTCATGTTTTGAAAATGCTACTGAATTTGTCTGAAAATCT  
TTTCATGACAAAAGAAGTACTCAGTGTGAGCAGTGTGAGAAATTTATAGGCCTCTTTAACAGGGAAGAG  
ACAAATGACAATATCAATTTGTTCTTGAATATTTGAGAATATTGGCAACAATACAAAAAGAAAACAG  
TGTTCTCTGATGATGATTTCAATATTGAGCCGCTTATTCTGCATTCCACAAAGTTGAGAAATTTGCTAA  
GGAAGTCAAGGCAAAACAGACAATCAAATGACCCTGAAGGGGACCAAGAAAAT

ACGCGTACGCGCGCCTCGAGCAGAACTCATCTCAGAAGAGGATCTGGCAGCAAATGATATCCTGGATT  
ACAAGGATGACGACGATAAGGTTTAA

**Protein Sequence:** >RC212262 representing NM\_001099411  
 Red=Cloning site Green=Tags(s)

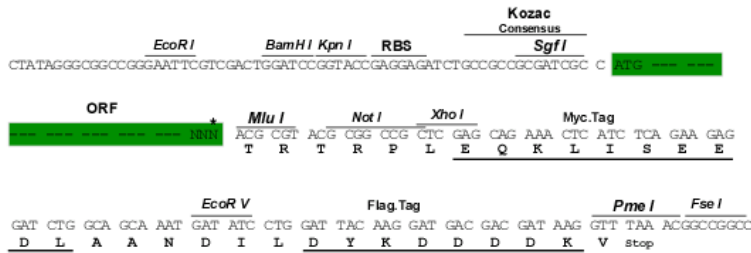
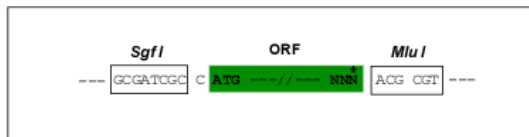
MTGAEIESGAQVKPEKKPGEEVVGGAIEIENDVPLVVRPKVRTQAQIMPGARPKNKSKVMPGASTKVETSA  
 VGGARPKSKAKAIPVSRFKEEAQMWAPRFGAERLSKTERNSQTNIIASPLVSTDSVLVAKTKYLS  
 EDRELVNTDTESFPRRKAHYQAGFQPSFRSKEETNMGSWCCPRPTSKQEASPNSDFKWVDSVSSLFWSGDEVT  
 AKFHGPNRVKDSNRSMHMANQEANTMSRSQTNQELYIASSSGSEDESVKTPWFWARDKTNWSPREDPN  
 SRSRFRSKKEVYVESSSGSEHEDHLESWFGAGKEAKFRSKMRAGKEANNRHRRAKREACIDFMPGSIDV  
 IKKESCFWPEENANTFSRPMIKKEARARAMTKEEAKTKARARAKQEARSEEEALIGTWFWATDESSMADE  
 ASISSLQVEDESIIGSWFWTEEEASMGTGASSKSRPRTDGERIGDSLFGAREKTSMTKGAEATSESILA  
 ADDEQVIIGSWFWAGEEVNQAEETIFGSWFVVIDAASVSGVGVSCSRTRSEEEVIGPWFWSGEQV  
 DIEAGIGEEARPGAEETIFGSWFAENQTYMDCRAETSCDTMQGAEETPIIGSWFWTRVEACVEGDVN  
 SKSSLEDKEEAMIPCFGAKEEVSMKHGTGVRFRMAGAEETNNKSCFWAEKEPCMPYAGGGSWKSRPEEE  
 EDIVNSWFWSRKYTKPEAIIIGSWLWATEESNIDGTGEKAKLLTEETIINSWFKEDAISEATDREESR  
 PEAEEDGIIIGSWFWAGEEDRLEPAAETREEDRLAAEKEGIVGSWFGAREETIRREAGSCSKSSPKAEET  
 VIIGSWFWEEEAPEAVAGVGFESKPGTEETITVGSWFWPEEEASIQAGSQAVEEMESETEETIFGSW  
 FWDGKEVSEEAGPCCVSKPEDDEEMIVESWFWSRDKAIKETGTVATCESKPENEGAIVGSWFEAEDEV  
 NRTDNGSNCGSRTLADEDEAIVGSWFWAGDEAHFESNPSVFRACRSTCSVEQEPDPSRRPQSWEVTV  
 QFKPGPWGRVGFPSISPRFRPKAAASLFCMFGGKPRNMVLSPEGEDQESLLQPDQPSPEFPFYDPSYR  
 SVQEIREHLRAKESTEPSSNCIQCELIKIGSEEFELLLLMEKIRDPFIHEISKIAMGMRASQFTRD  
 FIRDSGVVSLIETLLNYPSSRVRTSFLNMI RMAPPYPLNIQTYICKVCEETLAYSVDSPEQLSGIRM  
 IRHLTTTTDYHTLVANYMSGFLSLLATGNAKTRFHVLKMLLNLSENLFMTKELLSAEAVSEFIGLNFREE  
 TNDNIQIVLAIFENIGNNIKKEVTFSDDDFNIEPLISAFHKVEKFAKELQGKTDNQNDPEGDQEN

TRTRPLEQKLISEEDLAANDILDYKDDDDKV

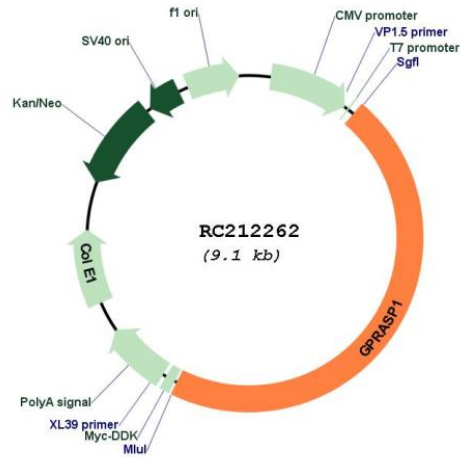
**Restriction Sites:**  
**Cloning Scheme:**

SgfI-MluI

Cloning sites used for ORF Shuttling:



\* The last codon before the Stop codon of the ORF

**Plasmid Map:**


**ACCN:** NM\_001099411

**ORF Size:** 4185 bp

**OTI Disclaimer:** Due to the inherent nature of this plasmid, standard methods to replicate additional amounts of DNA in *E. coli* are highly likely to result in mutations and/or rearrangements. Therefore, OriGene does not guarantee the capability to replicate this plasmid DNA. Additional amounts of DNA can be purchased from OriGene with batch-specific, full-sequence verification at a reduced cost. Please contact our customer care team at [custsupport@origene.com](mailto:custsupport@origene.com) or by calling 301.340.3188 option 3 for pricing and delivery.

The molecular sequence of this clone aligns with the gene accession number as a point of reference only. However, individual transcript sequences of the same gene can differ through naturally occurring variations (e.g. polymorphisms), each with its own valid existence. This clone is substantially in agreement with the reference, but a complete review of all prevailing variants is recommended prior to use. [More info](#)

**OTI Annotation:** This clone was engineered to express the complete ORF with an expression tag. Expression varies depending on the nature of the gene.

**Components:** The ORF clone is ion-exchange column purified and shipped in a 2D barcoded Matrix tube containing 10ug of transfection-ready, dried plasmid DNA (reconstitute with 100 ul of water).

**Reconstitution Method:**

1. Centrifuge at 5,000xg for 5min.
2. Carefully open the tube and add 100ul of sterile water to dissolve the DNA.
3. Close the tube and incubate for 10 minutes at room temperature.
4. Briefly vortex the tube and then do a quick spin (less than 5000xg) to concentrate the liquid at the bottom.
5. Store the suspended plasmid at -20°C. The DNA is stable for at least one year from date of shipping when stored at -20°C.

RefSeq: [NM\\_001099411.1](#), [NP\\_001092881.1](#)

RefSeq Size: 5826 bp

RefSeq ORF: 4188 bp

Locus ID: 9737

UniProt ID: [Q5JY77](#)

Cytogenetics: Xq22.1

Protein Families: Druggable Genome

MW: 156.7 kDa

**Gene Summary:** This gene encodes a member of the GPRASP (G protein-coupled receptor associated sorting protein) family. The protein may modulate lysosomal sorting and functional down-regulation of a variety of G-protein coupled receptors. It targets receptors for degradation in lysosomes. The receptors interacting with this sorting protein include D2 dopamine receptor (DRD2), delta opioid receptor (OPRD1), beta-2 adrenergic receptor (ADRB2), D4 dopamine receptor (DRD4) and cannabinoid 1 receptor (CB1R). Multiple alternatively spliced transcript variants encoding the same protein have been identified. [provided by RefSeq, May 2010]