

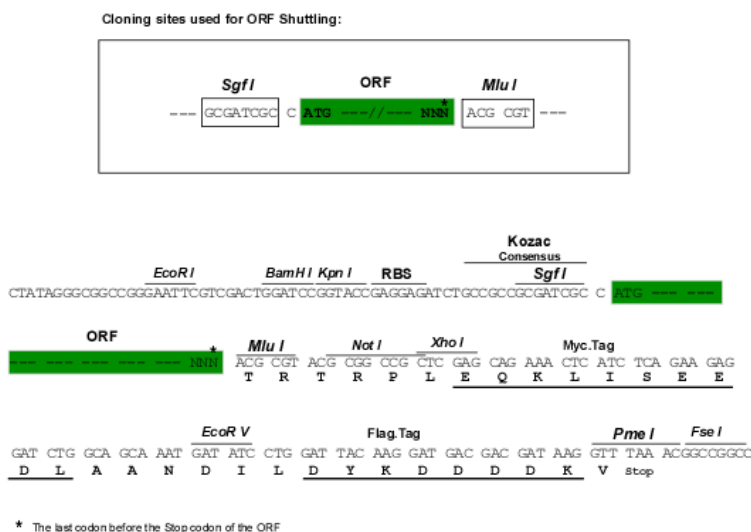
Product datasheet for RC212255

NADE (BEX3) (NM_014380) Human Tagged ORF Clone

Product data:

Product Type:	Expression Plasmids
Product Name:	NADE (BEX3) (NM_014380) Human Tagged ORF Clone
Tag:	Myc-DDK
Symbol:	NADE
Synonyms:	Bex; DXS6984E; HGR74; NADE; NGFRAP1
Mammalian Cell Selection:	Neomycin
Vector:	pCMV6-Entry (PS100001)
E. coli Selection:	Kanamycin (25 ug/mL)
ORF Nucleotide Sequence:	<p>>RC212255 ORF sequence</p> <p>Red=Cloning site Blue=ORF Green=Tags(s)</p> <p>TTTTGTAATACGACTCACTATAGGGCGGCCGGAATTCGTCGACTGGATCCGGTACCGAGGAGATCTGCCGCCCGCATCGCC</p> <p>ATGGCAAATATTCACCAGGAAAACGAAGAGATGGAGCAGCCTATGCAGAATGGAGAGGAAGACCGCCCTTGGGAGGAGGTGAAGGCCACCAGCCTGCAGGAAATCGACGGGGACAGGCTCGCCGACTTGCCCTAATTTTCGATGGGCCATACCAATAGGCAGATCAATGATGGGATGGGTGGAGATGGAGATGATATGGAAATATTCATGGAGGAGATGAGAGAAATCAGAAGAAAACCTAGGGAGCTGCAGTTGAGGAATTGTCTGCGTATCCTTATGGGGAGCTCTCTAATCACCATGACCATCATGATGAATTTGCCTTATGCCT</p> <p>ACGCGTACGCGGCCGCTCGAGCAGAACTCATCTCAGAAGAGGATCTGGCAGCAAATGATATCCTGGATTACAAGGATGACGACGATAAGGTTTAA</p>
Protein Sequence:	<p>>RC212255 protein sequence</p> <p>Red=Cloning site Green=Tags(s)</p> <p>MANIHQENEEME QPMQNGEEDRPLGGEGHQ PGNRRGQARR LAPNFRWAIPNRQINDGMGGDGDDEIFMEEMREIRRKLRELQLRNCLRLMGELSNHHDHDEFCLMP</p> <p>TRTRPLEQKLISEEDLAANDILDYKDDDDKV</p>
Chromatograms:	https://cdn.origene.com/chromatograms/mk6392_a10.zip
Restriction Sites:	SgfI-MluI


[View online »](#)

Cloning Scheme:


ACCN: NM_014380

ORF Size: 333 bp

OTI Disclaimer: The molecular sequence of this clone aligns with the gene accession number as a point of reference only. However, individual transcript sequences of the same gene can differ through naturally occurring variations (e.g. polymorphisms), each with its own valid existence. This clone is substantially in agreement with the reference, but a complete review of all prevailing variants is recommended prior to use. [More info](#)

OTI Annotation: This clone was engineered to express the complete ORF with an expression tag. Expression varies depending on the nature of the gene.

Components: The ORF clone is ion-exchange column purified and shipped in a 2D barcoded Matrix tube containing 10ug of transfection-ready, dried plasmid DNA (reconstitute with 100 ul of water).

Reconstitution Method:

1. Centrifuge at 5,000xg for 5min.
2. Carefully open the tube and add 100ul of sterile water to dissolve the DNA.
3. Close the tube and incubate for 10 minutes at room temperature.
4. Briefly vortex the tube and then do a quick spin (less than 5000xg) to concentrate the liquid at the bottom.
5. Store the suspended plasmid at -20°C. The DNA is stable for at least one year from date of shipping when stored at -20°C.

RefSeq: [NM_014380.3](#)

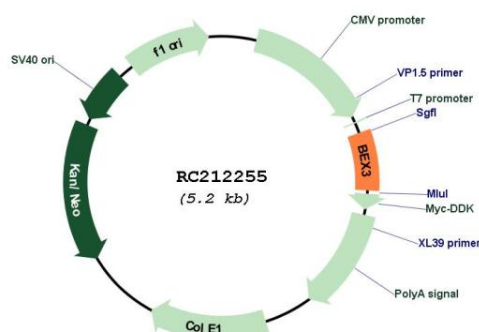
RefSeq Size: 984 bp

RefSeq ORF: 336 bp

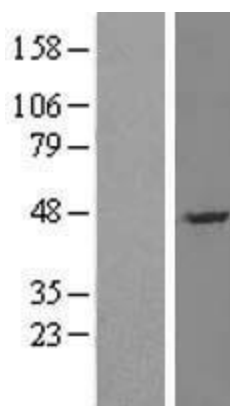
Locus ID: 27018

UniProt ID:	<u>Q00994</u>
Cytogenetics:	Xq22.2
Domains:	BEX
Protein Families:	Druggable Genome
Protein Pathways:	Neurotrophin signaling pathway
MW:	13 kDa
Gene Summary:	May be a signaling adapter molecule involved in p75NTR-mediated apoptosis induced by NGF. Plays a role in zinc-triggered neuronal death (By similarity). May play an important role in the pathogenesis of neurogenetic diseases.[UniProtKB/Swiss-Prot Function]

Product images:



Circular map for RC212255



Western blot validation of overexpression lysate (Cat# [LY404165]) using anti-DDK antibody (Cat# [TA50011-100]). Left: Cell lysates from untransfected HEK293T cells; Right: Cell lysates from HEK293T cells transfected with [RC212255] using transfection reagent MegaTran 2.0 (Cat# [TT210002]).