

Product datasheet for RC212254

OPCML (NM_001012393) Human Tagged ORF Clone

Product data:

Product Type:	Expression Plasmids
Product Name:	OPCML (NM_001012393) Human Tagged ORF Clone
Tag:	Myc-DDK
Symbol:	OPCML
Synonyms:	IGLON1; OBCAM; OPCM
Mammalian Cell Selection:	Neomycin
Vector:	pCMV6-Entry (PS100001)
E. coli Selection:	Kanamycin (25 ug/mL)
ORF Nucleotide Sequence:	>RC212254 representing NM_001012393 Red=Cloning site Blue=ORF Green=Tags(s)

TTTTGTAATACGACTCACTATAGGGCGGCCGGAATTCGTCGACTGGATCCGGTACCGAGGAGATCTGCC
GCC**CGATCGCC**

ATGTACCATCCTGCCTACTGGGTCGTCTTCTCGGCACAACCTGCCCTGCTTTCATCCCAGGAGTGCCCG
TGCGCAGCGGAGATGCCACCTTCCCAAAGCTATGGACAACGTGACGGTCCGGCAGGGGGAGAGCGCCAC
CCTCAGGTGTACCATAGATGACCGGTAACCCGGTGGCCTGGCTAAACCGCAGCACCATCTCTACGCT
GGGAATGACAAGTGGTCCATAGACCCTCGTGTGATCATCCTGGTCAATACACCAACCCAGTACAGCATCA
TGATCCAAAATGTGGATGTGTATGACGAAGTCCGTACACCTGCTCTGTGCAGACAGACAATCATCCAA
AACGTCCCGGTTACCTAATAGTGCAAGTTCCTCCTCAGATCATGAATATCTCCTCAGACATCACTGTG
AATGAGGGAAGCAGTGTGACCCTGCTGTGCTTGTCTATTGGCAGACCAGGCCAACTGTGACATGGAGAC
ACCTGTCAGTCAAGGAAGGCCAGGGCTTGTAAAGTGAGGATGAGTACCTGGAGATCTCTGACATCAAGCG
AGACCAGTCCGGGGAGTACGAATGCAGCGCCTGAACGATGTCGCTGCGCCCGATGTGCGGAAAAGTAAAA
ATCACTGTAAACTATCCTCCCTATATCTCAAAGCCAAGAACAACCTGGTGTTCAGTCGGTCAAGAGGCA
TCCTGAGCTGTGAAGCCTCTGCAGTCCCATGGCTGAATCCAGTGGTTCAGGAAGAAACCAGGTTAGC
CACTGGTCTGGATGGAATGAGGATTGAAAACAAAGGCCGATGTCCACTCTGACTTCTTCAATGTTTCA
GAAAAGGATTATGGAACTATACTTGTGTGGCCACGAACAAGCTTGGGAACACCAATGCCAGCATCACAT
TGTATGGCCTGGAGCAGTCATTGATGGTGAAACTCGGCCTCCAGAGCACTGGCTTGTCTCTGGCTATC
AGGGACCCTCTTAGCCACTTCTTCATCAAGTTT

ACGCGTACGCGGCCGCTCGAGCAGAAACTCATCTCAGAAGAGGATCTGGCAGCAAATGATATCCTGGATT
ACAAGGATGACGACGATAAGGTTTAA



[View online »](#)

Protein Sequence: >RC212254 representing NM_001012393
Red=Cloning site Green=Tags(s)

MYHPAYWVVSATTALLFIPGVPVRSGDATFPKAMDNVTVRQGESATLRCTIDDRVTRVAWLNIRSTILYA
 GNDKWSIDPRVILVNTPTQYSIMIQNVVDVYDEGPYTCVQTDNHPKTSRVHLIVQVPPQIMNISSDITV
 NEGSSVTLCLAIGRPEPTVTRHLSVKEGQGFVSEDEYLEISDIKRDQSGEYECALSNDVAAPDVRKVK
 ITVNYPPYISKAKNTGVSVGQKILSCEASAVPMAEFQWFKEETRLATGLDGMRIENKGRMSTLTFFNVS
 EKDYGNYTCVATNKLGNNTASITLYGPGAVIDGVNSASRALACLWLSGTL LAHFFIKF

TRTRPLEQKLISEEDLAANDILDYKDDDDKVK

Chromatograms: https://cdn.origene.com/chromatograms/mk6099_a02.zip

Restriction Sites: SgfI-MluI

Cloning Scheme:

Cloning sites used for ORF Shuttling:



* The last codon before the Stop codon of the ORF

ACCN: NM_001012393

ORF Size: 1014 bp

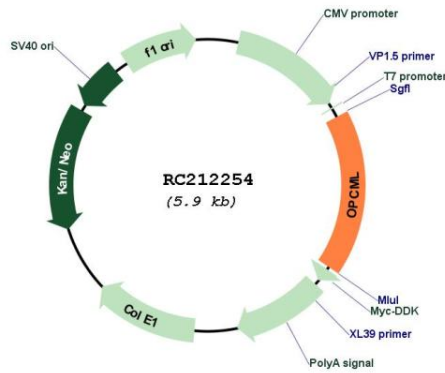
OTI Disclaimer: The molecular sequence of this clone aligns with the gene accession number as a point of reference only. However, individual transcript sequences of the same gene can differ through naturally occurring variations (e.g. polymorphisms), each with its own valid existence. This clone is substantially in agreement with the reference, but a complete review of all prevailing variants is recommended prior to use. [More info](#)

OTI Annotation: This clone was engineered to express the complete ORF with an expression tag. Expression varies depending on the nature of the gene.

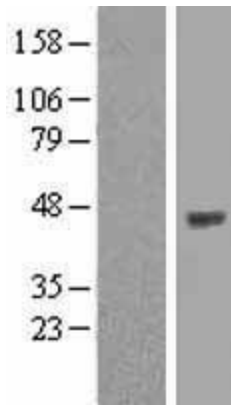
Components: The ORF clone is ion-exchange column purified and shipped in a 2D barcoded Matrix tube containing 10ug of transfection-ready, dried plasmid DNA (reconstitute with 100 ul of water).

Reconstitution Method:	<ol style="list-style-type: none">1. Centrifuge at 5,000xg for 5min.2. Carefully open the tube and add 100ul of sterile water to dissolve the DNA.3. Close the tube and incubate for 10 minutes at room temperature.4. Briefly vortex the tube and then do a quick spin (less than 5000xg) to concentrate the liquid at the bottom.5. Store the suspended plasmid at -20°C. The DNA is stable for at least one year from date of shipping when stored at -20°C.
RefSeq:	NM_001012393.3
RefSeq Size:	6413 bp
RefSeq ORF:	1017 bp
Locus ID:	4978
UniProt ID:	Q14982
Cytogenetics:	11q25
Protein Families:	Druggable Genome, Transmembrane
MW:	37.27 kDa
Gene Summary:	<p>This gene encodes a member of the IgLON subfamily in the immunoglobulin protein superfamily of proteins. The encoded preprotein is proteolytically processed to generate the mature protein. This protein is localized in the plasma membrane and may have an accessory role in opioid receptor function. This gene has an ortholog in rat and bovine. The opioid binding-cell adhesion molecule encoded by the rat gene binds opioid alkaloids in the presence of acidic lipids, exhibits selectivity for mu ligands and acts as a GPI-anchored protein. Since the encoded protein is highly conserved in species during evolution, it may have a fundamental role in mammalian systems. Alternative splicing results in multiple transcript variants, at least one of which encodes an isoform that is proteolytically processed. [provided by RefSeq, Jan 2016]</p>

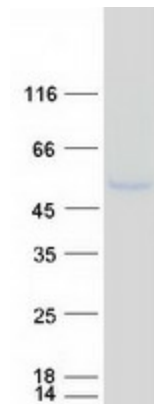
Product images:



Circular map for RC212254



Western blot validation of overexpression lysate (Cat# [LY400389]) using anti-DDK antibody (Cat# [TA50011-100]). Left: Cell lysates from untransfected HEK293T cells; Right: Cell lysates from HEK293T cells transfected with RC212254 using transfection reagent MegaTran 2.0 (Cat# [TT210002]).



Coomassie blue staining of purified OPCML protein (Cat# [TP312254]). The protein was produced from HEK293T cells transfected with OPCML cDNA clone (Cat# RC212254) using MegaTran 2.0 (Cat# [TT210002]).