

Product datasheet for **RC212247**

GAB4 (NM_001037814) Human Tagged ORF Clone

Product data:

Product Type:	Expression Plasmids
Product Name:	GAB4 (NM_001037814) Human Tagged ORF Clone
Tag:	Myc-DDK
Symbol:	GAB4
Mammalian Cell Selection:	Neomycin
Vector:	pCMV6-Entry (PS100001)
E. coli Selection:	Kanamycin (25 ug/mL)



[View online »](#)

ORF Nucleotide Sequence:

>RC212247 representing NM_001037814
 Red=Cloning site Blue=ORF Green=Tags(s)

TTTTGTAATACGACTCACTATAGGGCGGCCGGAATTCGTCGACTGGATCCGGTACCGAGGAGATCTGCC
 GCC**GCGATCGCC**

ATGTCCTGCCGTCCCCCTCACCTCCCGGAGCTGTGCCACCTGACCCGGCATTGCGCCTTTGTCTT
 CGTGGCCCGGAAGTGGCCCCCGCGGGAAGCAGGAGAAGTGGCCACGTGCTGTACAGCGCTGGCTGAG
 GAAGTCGCCCCCGAGAAGAAGCTGAGGCTCTTTGCTGGAGAAACGCTGGTTTATCCTCGGGAGGGC
 CAGACTAGCAGTGACCCAGATGTTCTGGAATACTACAAGAATGATGGCTCCAAGAAGCCCCTGCGCACCA
 TCAACCTGAACCTCTGTGAGCAGCTGGATGTTGATGTGACTCTGAACTTCAACAAGAAGGAGATTAGAA
 GGGCTATATGTTTACATCAAGACCAGTGAAGCTACCTTTTACCTGGTGGCTGAGACCAGGGAGGACATG
 AATGAGTGGGTCCAGAGCATCTGCAGATCTGTGGCTCAGGCAGGAGAAAGCACAGGCTTCTGGGAA
 ACATTTCTCAGCCAGTACGGCCTCTGCTCTTCTCCAGCTGAGCCAGCTGCTCCCATCAGCACCTCCC
 CCAAGAACAAGAACCACATCTGAGCCCCGGTGTCTACTGTGTGCCGCCACCTGGCCATCCCTGCA
 CCTCCGGGTGTCTCCGCTCGCACCAGCAGCCAGCCAGAGAGCAGAACATGCAAGGAGTGCCAGCTTCT
 CCCAGGTTCTGAGGCCCATTCATCATGAGGAGAAACACAGCCATGCAAAATCTTGCCAGCACAGTGG
 ATACAGTGTGATGGGTGAGCGGTACATCCATGGCTTCCATAGCCTTCCAAAGCCAGCCAGCACAAAT
 GCAGAATTCAGAGGCAGCACCCACAGAATCCCCTGGAGCCTGGCCTCCCATGGCCACACCAGAGGCAGCC
 TCACAGGCTCTGAGGCGGATAATGAGGCTTCTCCGGCAAGTACACCCAGCATGGTGGAGGGAATGCCAG
 CCGGCTGCTGAGTCCATGCATGAGGGAGTCTGTTCTTCTGCCAGGAAGAAGCCTTGTGGCCTGTCA
 GACAGATTGCTTCTGAGGGCAGCTGTGTGCCATGAACCCAGGCTCCCCTACCTGCCGGCTGTGAAGC
 AAGCAGCGATGATTCCAGGGTGTCTGCATCCCTGTGGGCTCATGTCTTGTTCGCTTTGACCTGTGG
 CTCCCCACTCACAGAGCTTTCTATGCACCAAGACCTCAGCCAGGACATGAGGTCCAGCTGCCCCCTGTC
 AACCGCAGCCTCAAGCCTAACCGAAGGCCAACCAACACCGCCCAACCTGAGAAACAACAGGGTATCA
 ATGAGCTCTCCTCAAGCCACCTGTACAGAGCCCTGGTCTGGGACCAGCCACACCTTTGACTCCAGCTC
 CTCCCAACACCCCATCTCCACGCAGAGCATCACCACACAGACTCAGAAGACAGTGGAGAGAGGTATCTT
 TCCCCGAACCCGGCATCTGCATTTCTGTTTCCGGTGGCACCAGCAGTTAGCCCGCCGAGGAGCACTG
 GTAACATCCACTACGCGGCCCTGGACTTCCAGCCGAGCAAGCCATCCATAGGCTCTGTACGTCCGGCAA
 GAAGGTGACTATGTCCAGGTGGATCTGGAGAAGACCCAGGCCCTGCAGAAGACCATGCATGAACAGATG
 TGCTGCGGCAGTCTCAGAGCCTCCAGGGGCGCCAAGCTG

ACGCGTACGCGGCGCTCGAGCAGAAACTCATCTCAGAAGAGGATCTGGCAGCAAATGATATCCTGGATT
 ACAAGGATGACGACGATAAGGTTTAA

Protein Sequence:

>RC212247 representing NM_001037814
 Red=Cloning site Green=Tags(s)

MSLPSPSPSRELCPPDPAFAPLSSWPGSGPAGGSTRSGHVLVYSGWLRKSPPEKKLRLFAWRKRFILRRG
 QTSSDPDVLEYKNDGSKPLRTINLNLCEQLDQDVTLNFNKKEIQKGYMFDIKTERTFYLVVAETREDM
 NEWVQSIQICGFRQEESTGFLGNISSASHGLCSPAEPSCSHQHPQEQEPTSEPPVSHCVPTWPIPA
 PPGCLRSHQHASQRAEHARSASFQSGSEAPFIMRRNTAMQNLAQHSGYSVDGVSQGHVHSLSKPSQHN
 AEFRGSTHRIPWSLASHGHTRSLTGSEADNEASSGKYTQHGGNASRPAESMHEGVCSFLPGRTLVGLS
 DSIASEGSCVPMNPGSPTLPAVKQAGDSSQGVCIIPVGSCLVRFDLLGSPLTELSMHQDLQSGHEVQLPPV
 NRSLKPNQKANPTPPNLRNRRVINELSFKPPVTEPWSGTSHTFDSSSSQHPISTQSIINTDSEDSGERYL
 FPNPASAFPVSGGTSSSAPPRSTGNIHYAALDFQPSKPSIGSVTSGKKVDYVQVDLEKTQALQKTMHEQM
 CLRQSSEPPRGAKL

TRTRPLEQKLISEEDLAANDILDYKDDDDKV

Chromatograms:

https://cdn.origene.com/chromatograms/mk8025_h11.zip

Restriction Sites:

Sgfl-Mlul

Cloning Scheme:

ACCN: NM_001037814

ORF Size: 1722 bp

OTI Disclaimer: The molecular sequence of this clone aligns with the gene accession number as a point of reference only. However, individual transcript sequences of the same gene can differ through naturally occurring variations (e.g. polymorphisms), each with its own valid existence. This clone is substantially in agreement with the reference, but a complete review of all prevailing variants is recommended prior to use. [More info](#)
OTI Annotation: This clone was engineered to express the complete ORF with an expression tag. Expression varies depending on the nature of the gene.

Components: The ORF clone is ion-exchange column purified and shipped in a 2D barcoded Matrix tube containing 10ug of transfection-ready, dried plasmid DNA (reconstitute with 100 ul of water).

- Reconstitution Method:**
1. Centrifuge at 5,000xg for 5min.
 2. Carefully open the tube and add 100ul of sterile water to dissolve the DNA.
 3. Close the tube and incubate for 10 minutes at room temperature.
 4. Briefly vortex the tube and then do a quick spin (less than 5000xg) to concentrate the liquid at the bottom.
 5. Store the suspended plasmid at -20°C. The DNA is stable for at least one year from date of shipping when stored at -20°C.

RefSeq: [NM_001037814.1](#), [NP_001032903.1](#)
RefSeq Size: 2630 bp

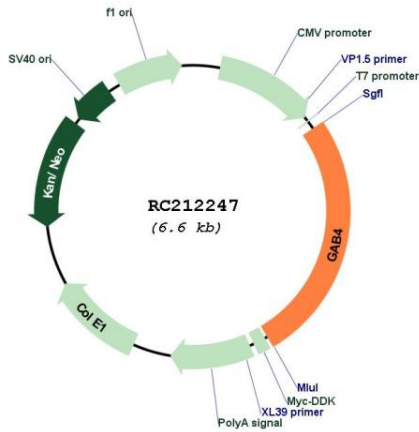
RefSeq ORF: 1725 bp

Locus ID: 128954

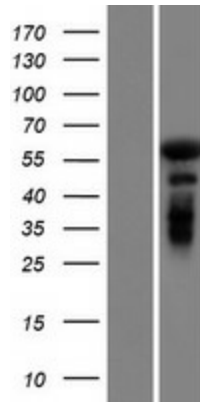
UniProt ID: [Q2WGN9](#)
Cytogenetics: 22q11.1

MW: 62.2 kDa

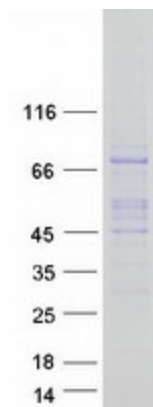
Product images:



Circular map for RC212247



Western blot validation of overexpression lysate (Cat# [LY421992]) using anti-DDK antibody (Cat# [TA50011-100]). Left: Cell lysates from untransfected HEK293T cells; Right: Cell lysates from HEK293T cells transfected with RC212247 using transfection reagent MegaTran 2.0 (Cat# [TT210002]).



Coomassie blue staining of purified GAB4 protein (Cat# [TP312247]). The protein was produced from HEK293T cells transfected with GAB4 cDNA clone (Cat# RC212247) using MegaTran 2.0 (Cat# [TT210002]).